

100% Leased Medical / Office Building FOR SALE | PRICE REDUCED! \$3,500,000



481 Carlyn Avenue / 310 West Hamilton Avenue, Campbell, CA 95008

Building Details

Investment Opportunity

- **Stable, long-term tenants** ensuring a steady income stream
- **Attractive cap rate** in a high-demand commercial area
- **Strong foot traffic & professional clientele** due to medical/office use

Property Highlights

- **Building Size:** ±9,306 SF (Including storage space and common areas.)
- **Lot Size:** ±16,040 SF
- **Parking:** 33 Surface Spots
- **Cap Rate as of 4/1/2026:** 7.22%
- **Average Cap Rate over the next 5 Years:** 7.68%
- **Occupancy:** Fully Leased to Medical and Office Tenants
- **Owner Occupant Possibility**
- **Built in:** 1986
- **Zoning Type:** [P-D \(Planned Development\)](#) / [GC \(General Commercial\)](#)
- **Virtual 3D Tour:** [Click Here](#)
- **Visit Our Website:** 481Carlyn.com

Prime Location & Accessibility

- Quick freeway access to **Highway 17/880, 280**
- Near **Westfield Valley Fair, Santana Row, and Pruneyard Shopping Center**
- **Public Transit:** 1.1 miles to Hamilton Tram Stop and 5-minute drive to Winchester Transit Station



P-D / GC Zoning Info



Contact Agents for More Details



ANDREW PECEIMER

Senior Commercial Real Estate Advisor

DRE # 00993289

M: 650.208.4971

O: 650.344.4300

apeceimer@cbcburlingame.com



GARRETT SWARTZ

Commercial Real Estate Advisor

DRE # 02178894

M: 925.222-0933

O: 650.352.3302

gswartz@cbcburlingame.com



**COLDWELL BANKER
COMMERCIAL**
WESTBAY REAL ESTATE
GROUP

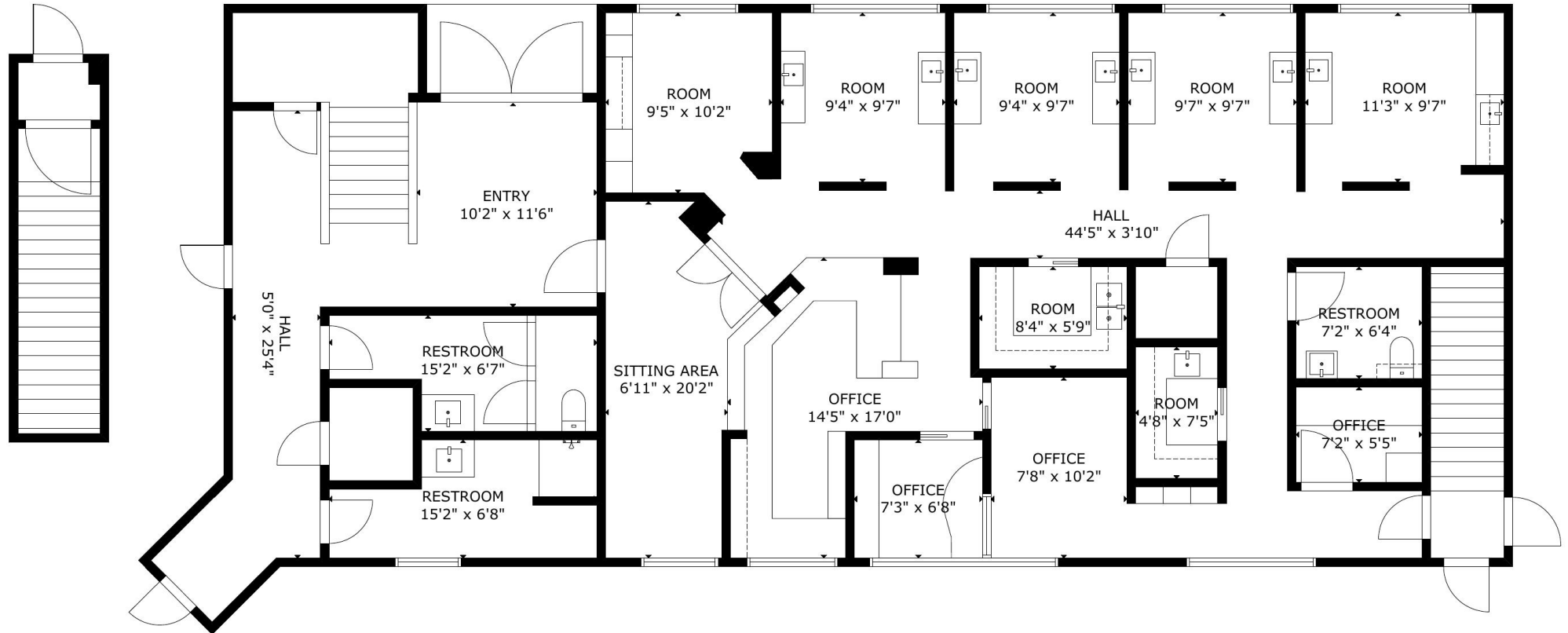
1575 Bayshore Highway, Suite 100,
Burlingame CA 94010

100% Leased Medical / Office Building

481 Carlyn Avenue / 310 West Hamilton Avenue,
Campbell, CA 95008

FOR SALE | PRICE REDUCED! \$3,500,000

GROUND LEVEL



ANDREW PECEIMER

Senior Commercial Real Estate Advisor

DRE # 00993289

M: 650.208.4971

O: 650.344.4300

apeceimer@cbcburlingame.com



GARRETT SWARTZ

Commercial Real Estate Advisor

DRE # 02178894

M: 925.222-0933

O: 650.352.3302

gswartz@cbcburlingame.com



**COLDWELL BANKER
COMMERCIAL**
WESTBAY REAL ESTATE
GROUP

1575 Bayshore Highway, Suite 100,
Burlingame CA 94010

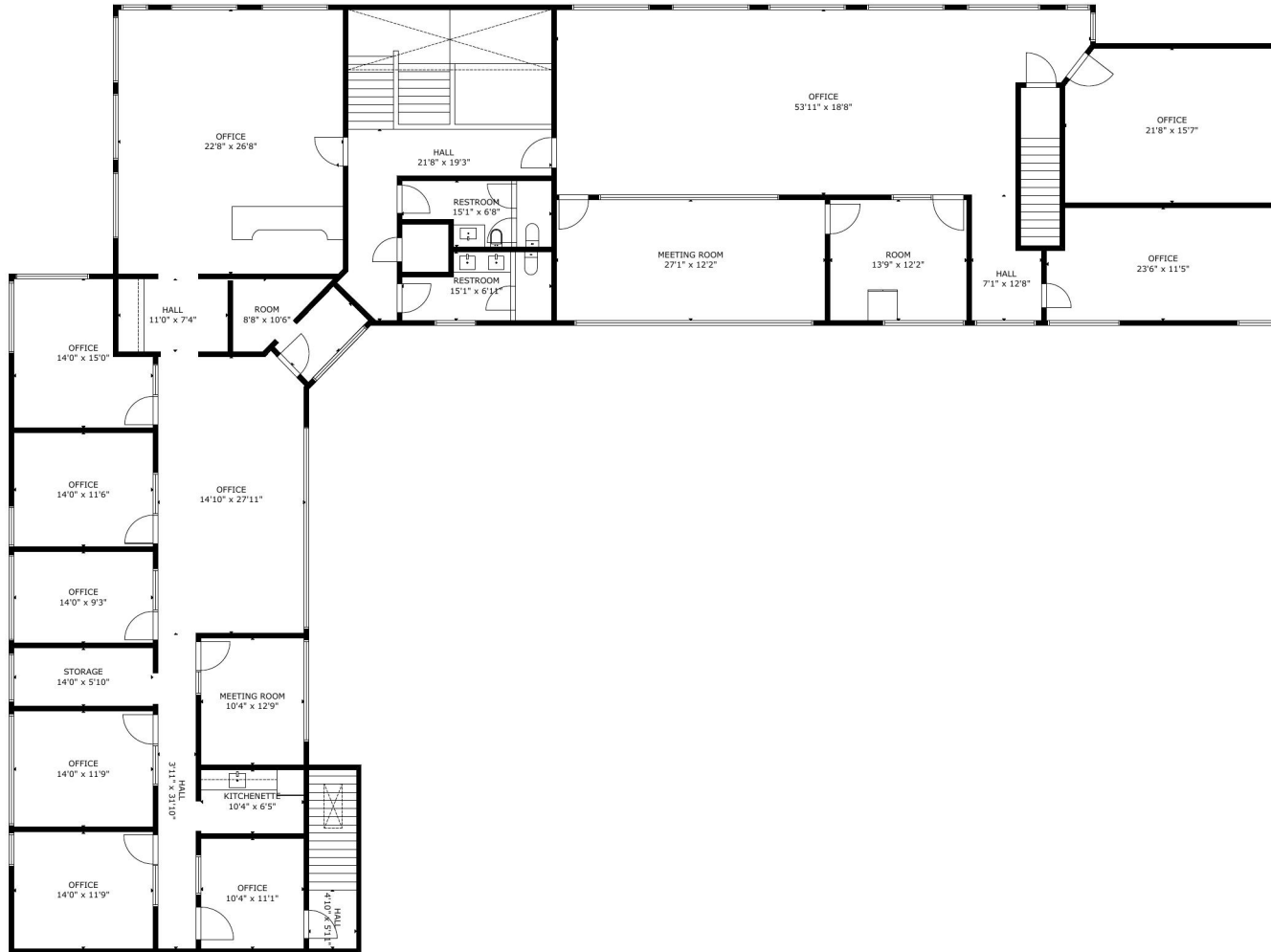
©2025 Coldwell Banker Real Estate LLC, dba Coldwell Banker Commercial Westbay Real Estate Group. All rights reserved. Coldwell Banker Commercial® and the Coldwell Banker Commercial logo are registered service marks owned by Coldwell Banker Real Estate LLC. Coldwell Banker Real Estate LLC, dba Coldwell Banker Commercial Affiliates fully supports the principal of the Fair Housing Act and the Equal Opportunity Act. Each office is independently owned and operated. The information provided is deemed reliable, but it is not guaranteed to be accurate or complete, and it should not be relied upon as such. This information should be independently verified before any person enters into a transaction based upon it.

100% Leased Medical / Office Building

481 Carlyn Avenue / 310 West Hamilton Avenue,
Campbell, CA 95008

FOR SALE | PRICE REDUCED! \$3,500,000

SECOND LEVEL



ANDREW PECEIMER

Senior Commercial Real Estate Advisor

DRE # 00993289

M: 650.208.4971

O: 650.344.4300

apeceimer@cbcburlingame.com



GARRETT SWARTZ

Commercial Real Estate Advisor

DRE # 02178894

M: 925.222-0933

O: 650.352.3302

gswartz@cbcburlingame.com



**COLDWELL BANKER
COMMERCIAL**
WESTBAY REAL ESTATE
GROUP

1575 Bayshore Highway, Suite 100,
Burlingame CA 94010

©2025 Coldwell Banker Real Estate LLC, dba Coldwell Banker Commercial Westbay Real Estate Group. All rights reserved. Coldwell Banker Commercial® and the Coldwell Banker Commercial logo are registered service marks owned by Coldwell Banker Real Estate LLC. Coldwell Banker Real Estate LLC, dba Coldwell Banker Commercial Affiliates fully supports the principal of the Fair Housing Act and the Equal Opportunity Act. Each office is independently owned and operated. The information provided is deemed reliable, but it is not guaranteed to be accurate or complete, and it should not be relied upon as such. This information should be independently verified before any person enters into a transaction based upon it.