

2406 Irving Boulevard

DALLAS, TX 75207

**INDUSTRIAL
FOR LEASE:**

**6,750 SF
AVAILABLE**



6,750 SF OFFICE / WAREHOUSE FOR LEASE

LOCATION AMENITIES

- Prominent Visibility & Signage on Irving Blvd.
- Dallas Design Center Area Location
- Dallas Love Field Airport: 4.5 Miles
- DFW International Airport: 17.9 Miles

PROPERTY HIGHLIGHTS

- Includes Approx. 33% Remodeled Office Areas/Open Work-Space, Breakroom, and Tiled Restrooms with Shower
- Warehouse Clear Height: 14'
- Warehouse Loading: 1 Recessed Dock-High Door

FOR MORE INFORMATION, PLEASE CONTACT:

Jean F. Russo, SIOR

Senior Director

+1 972 663 9792

jean.russo@cushwake.com

2021 McKinney Avenue, Suite 900

Dallas, TX 75201

+1 972 663 9600



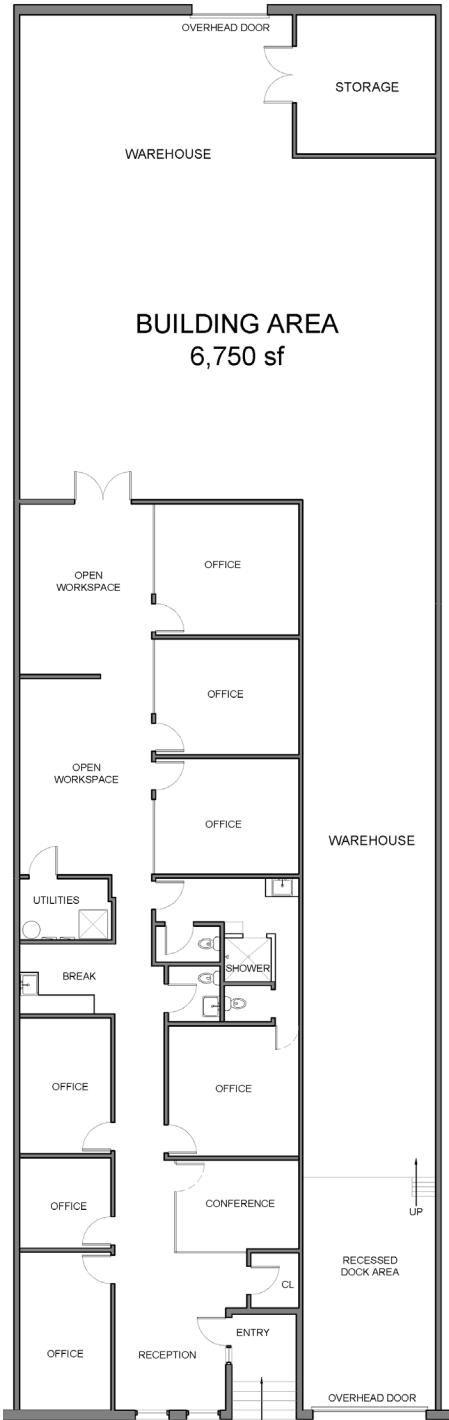
2406 Irving Boulevard

DALLAS, TX 75207

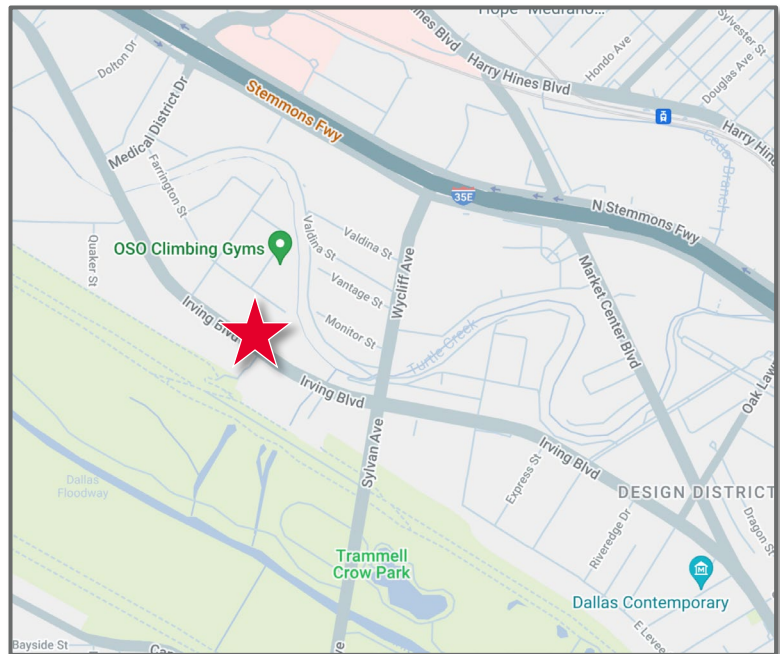
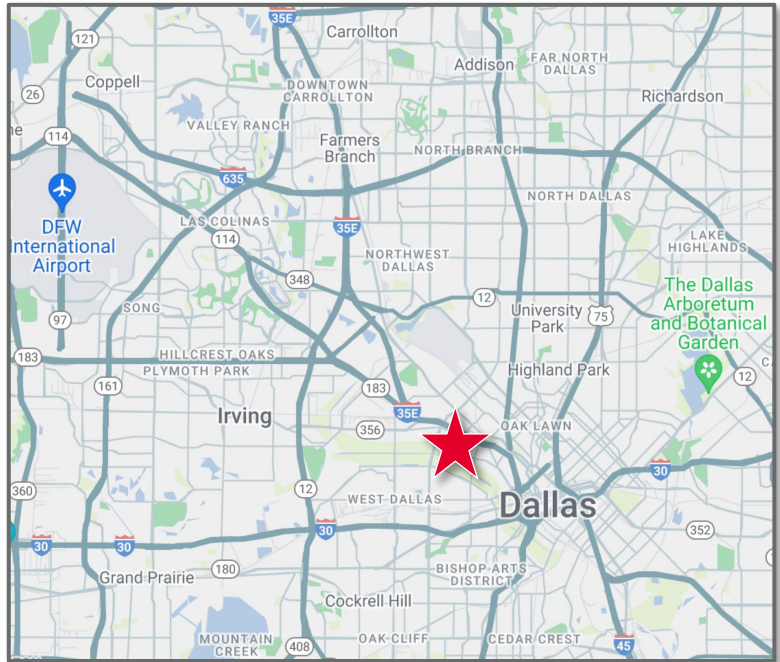
**INDUSTRIAL
FOR LEASE:**

**6,750 SF
AVAILABLE**

FLOOR PLAN



AREA MAP



FOR MORE INFORMATION, PLEASE CONTACT:

Jean F. Russo, SIOR
Senior Director
+1 972 663 9792
jean.russo@cushwake.com

2021 McKinney Avenue, Suite 900
Dallas, TX 75201
+1 972 663 9600

