

# 285 Middle Country Road

Smithtown, NY 11787

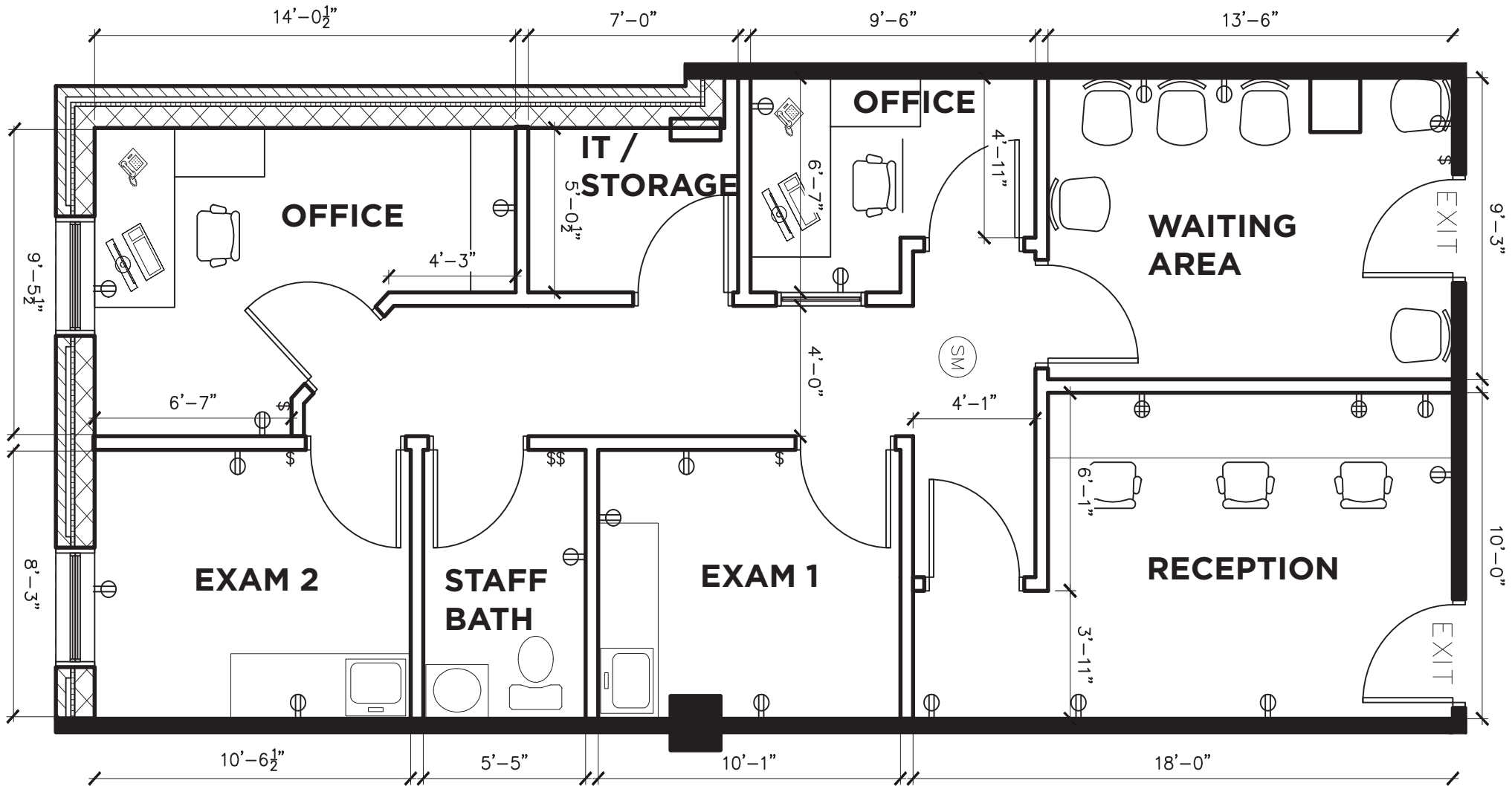




<b>Building</b>	26,136 SF
<b>Available</b>	Suite LL - 4: 1,116 SF Suite 206 : 1,100 SF
<b>Asking Rent</b>	Available Upon Request

- Bank Branch in Lobby
- Seasonal Lanscape
- Close Proximity to all local area hospitals : Stony Brook University Hospital, St. Catherine of Siena Medical Center, Mather Memorial Hospital
- Ample Parking
- Close Proximity to Local Shopping, Public Bus, and LIRR
- On-site Property Management & Maintenance Personnel
- High Speed Internet Access (Plug & Play)

**Suite LL - 4 : 1,116 SF**



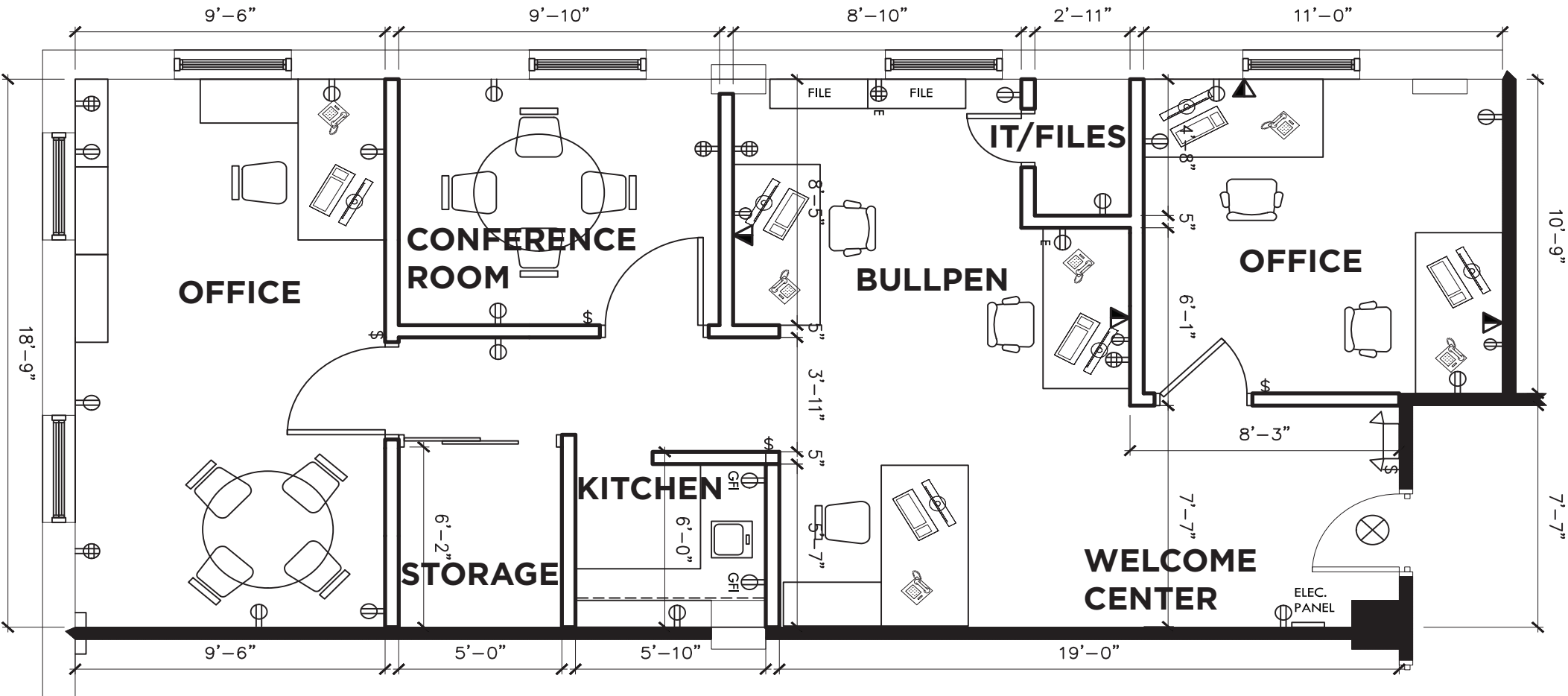
**FOR MORE INFORMATION:**

**John Finn**  
631.360.9000  
jfinn@drgrealty.com

**Pelops Damianos**  
631.360.9000  
pdamianos@drgrealty.com

**John Greco**  
631.360.9000  
jgreco@drgrealty.com

# Suite 206 : 1,100 SF

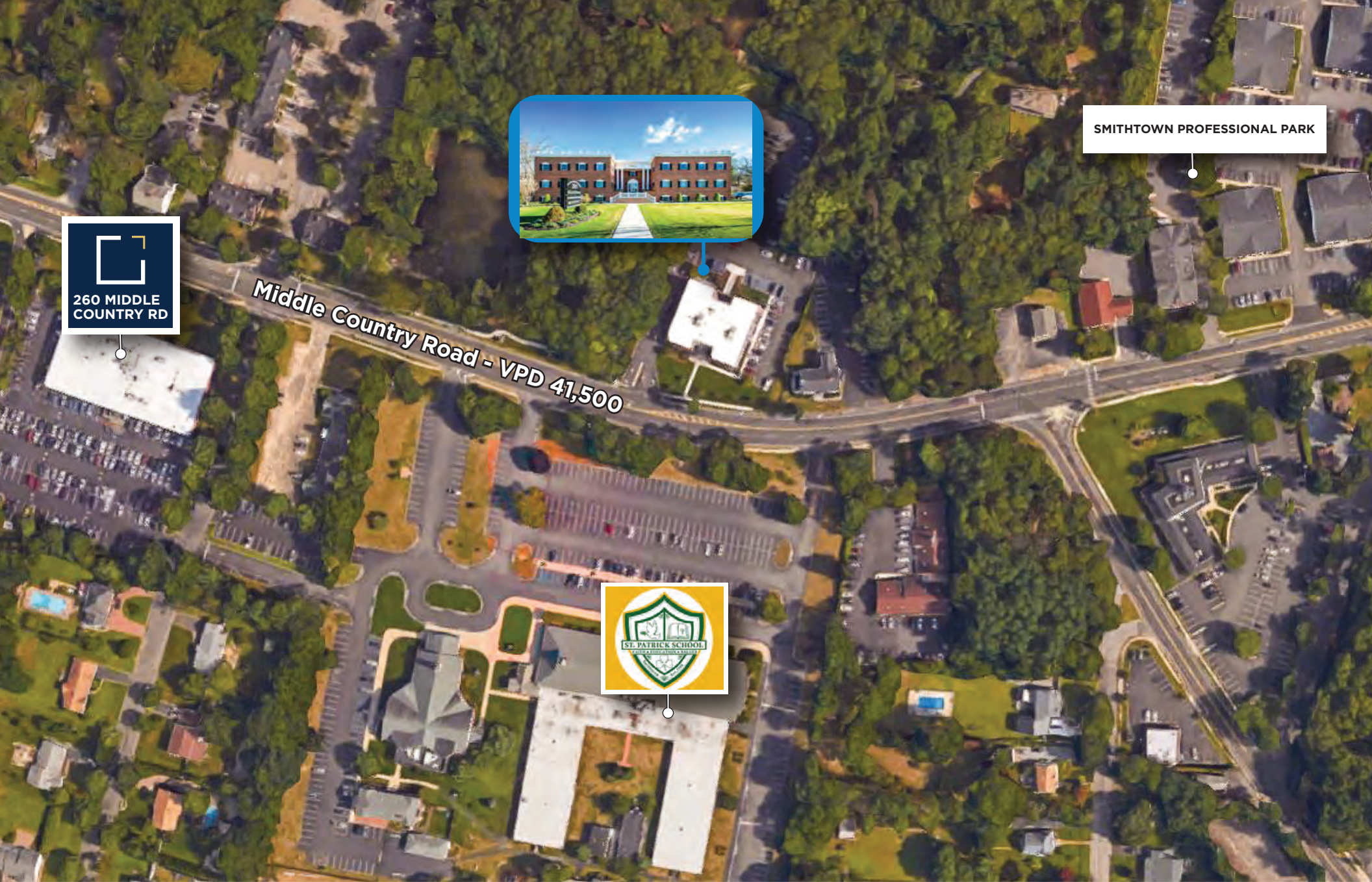


## FOR MORE INFORMATION:

**John Finn**  
631.360.9000  
jfinn@drgrealty.com

**Pelops Damianos**  
631.360.9000  
pdamianos@drgrealty.com

**John Greco**  
631.360.9000  
jgreco@drgrealty.com



**FOR MORE INFORMATION:**

**John Finn**  
631.360.9000  
jfinn@drgrealty.com

**Pelops Damianos**  
631.360.9000  
pdamianos@drgrealty.com

**John Greco**  
631.360.9000  
jgreco@drgrealty.com