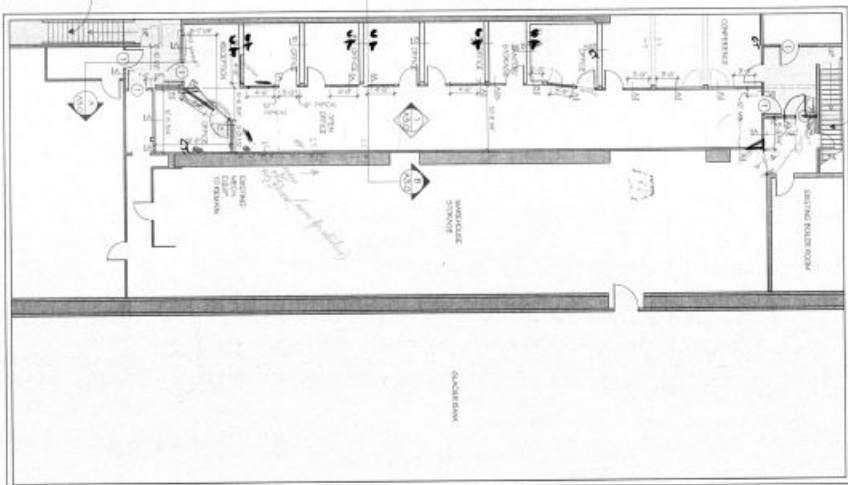
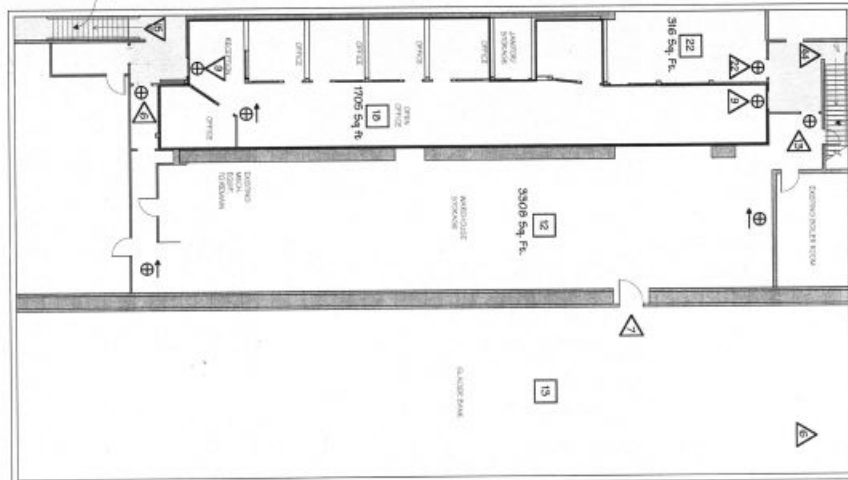


*8' 0" x 10' 0" frame
10' 0" x 10' 0" frame*



1 BASEMENT FLOOR PLAN
SCALE 1/8" = 1'-0"



2 CODE STUDY
SCALE 1/8" = 1'-0"

KEY NOTES

- ① 20 MIN. DOOR
- ② 60 MIN. DOOR
- 1 HR. CONSTRUCTION
- ⊕ EXIT SIGN
- ⊕ EXIT SIGN WITH DIRECTIONAL INDICATOR

WALL TYPES

- SOUND INSULATION WALL TYPE
- WALL HEIGHT (IF NOT TOLL)
- A 5/8" GYPSUM WALL BOARD
2 X 4 WOOD STUDS
5/8" GYPSUM WALL BOARD
- B 5/8" GYPSUM WALL BOARD
2 X 4 WOOD STUDS @ 16" O.C.
2 X 4 WOOD STUDS @ 16" O.C.
5/8" GYPSUM WALL BOARD

CODE STUDY

Occupancy	B & S-1
Occupancy Separation	No Requirements
Type of Construction	Type V - 1 hour
Allowable Area	14,000 sq. ft.
Actual Area	10,679 sq. ft.
Substrate Sufficient for 1 hour Construction	Section 1003.7 Requires smoke detection and Alarm
Shells	1 hour Construction Engined



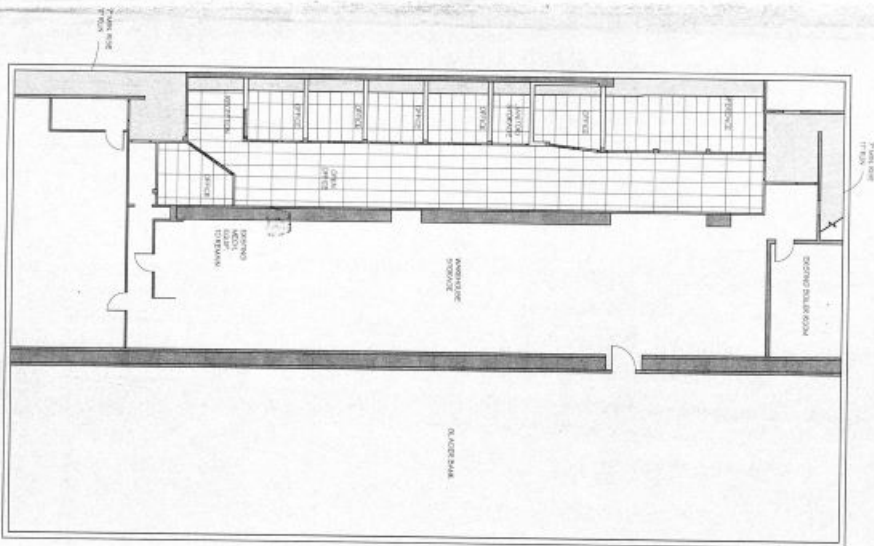
Architects Design Group
ARCHITECTS A. J. A. ANDERSON J. THOMPSON MICHAEL A. BIRNBAUM
100 S. PARKWAY
KALISPELL, MONTANA 59901
NO. 1 RABBIT PLAZA • KALISPELL, MONTANA • 406-297-7195

HUMAN RESOURCE CENTER BASEMENT REMODEL
KALISPELL • MONTANA



BASEMENT SCALE 1/8" = 1'-0"
DATE: JULY 17, 1995
JOB NO: 95-115



A1.0

1 BASEMENT FLOOR PLAN
SCALE: 1/8" = 1'-0"



KEY NOTES

-  GYPSUM BOARD
-  1HR FIRE RATED
2 X 4 LATH AND ACOUSTIC TILE

-  EXIT SIGN
-  EXIT SIGN WITH DIRECTIONAL INDICATOR

WALL TYPES



- A** 5/8" GYPSUM WALL BOARD
2 X 4 WOOD STUDS
5/8" GYPSUM WALL BOARD
- B** 5/8" GYPSUM WALL BOARD
2 X 4 WOOD STUDS @ 16" O. C.
AIR SPACE
2 X 4 WOOD STUDS @ 16" O. C.
5/8" GYPSUM WALL BOARD

CODE STUDY

Occupancy	B & S-1
Occupancy Separation	No Requirement
Type of Construction	Type V - 1 Hour
Allowable Area	14,000 sq. ft.
Actual Area	10,679 sq. ft.
Substitute Sprinkler for 1 Hour Construction	Section 1005.7 Exception 5 Requires smoke detection and Alarm
Stairs	1 Hour Construction Required

HUMAN
RESOURCE CENTER
BASEMENT REMODEL
KALISPELL • MONTANA

Architects
Design
Group

ARCHITECTS A. I. A.
100 N. W. 10TH
SUITE 200
DENVER, CO 80202
PHONE: 303.733.8788



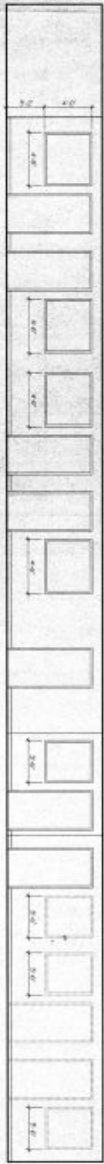
NO. 1 SQUARE PLAZA • KALISPELL, MONTANA • 406-857-7189

PROJECT NO.
A2.0

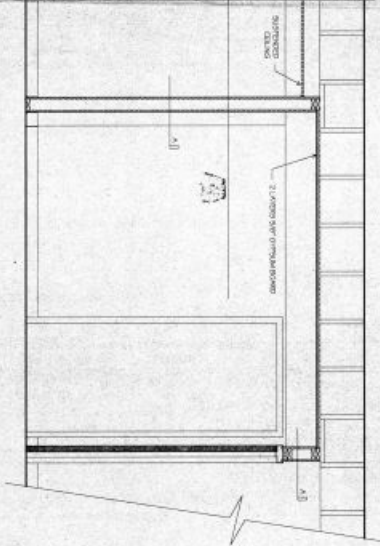
DATE
JULY 17, 1995

SCALE
1/8" = 1'-0"

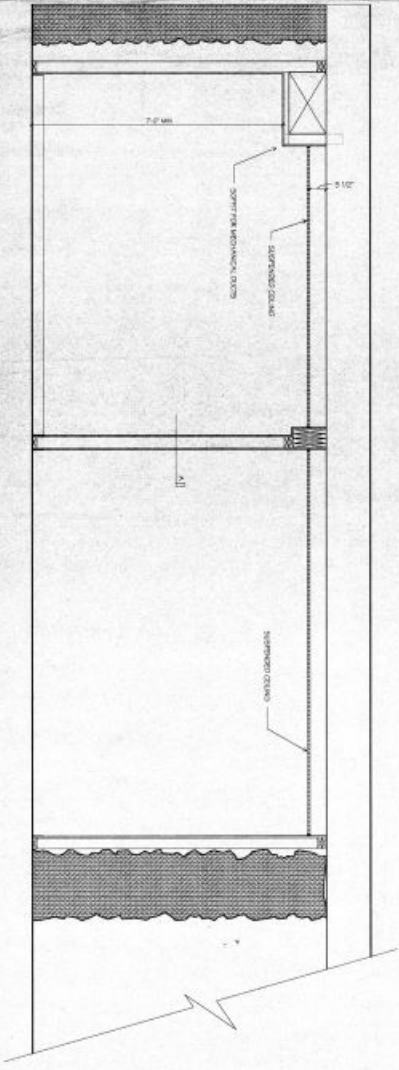
REFLECTED
CEILING
PLAN
SCALE
1/8" = 1'-0"



① INTERIOR ELEVATION
SCALE 3/8" = 1'-0"



② SECTION
SCALE 3/8" = 1'-0"



③ SECTION
SCALE 3/8" = 1'-0"



ARCHITECTS A. I. B. L.
 JAMES F. THOMPSON
 JOHN R. PATTERSON
 MICHAEL A. ARMSTRONG
 FRANK JOHN D. STEINBOCK

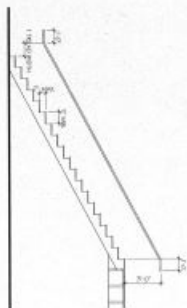
**Architects
 Design
 Group**
 NO. 1 BLANSET PLAZA • KALISPELL, MONTANA • 406-897-7188

**HUMAN
 RESOURCE CENTER
 BASEMENT REMODEL**
 KALISPELL • MONTANA

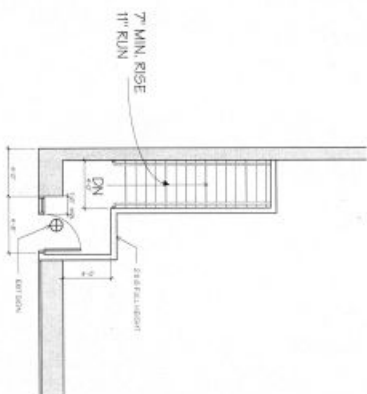
**SECTIONS
 INTERIOR
 UPPER FLOOR
 FLOOR PLAN
 REMODEL
 1/8" = 1'-0"
 A3.0**

DATE
 JULY 17, 1993
 SHEET NO.
 96-115

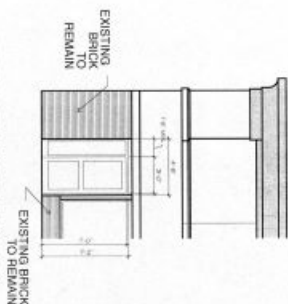
A3.0



① HANDCAP ACCESSIBLE STAIR ELEVATION
SCALE 1/8" = 1'-0"



② EXIT DOOR UPPER FLOOR
SCALE 1/8" = 1'-0"



③ PARTIAL EXTERIOR ELEVATION
SCALE 1/8" = 1'-0"

STAIR
AND
DOOR
DETAILS
SCALE
1/8" = 1'-0"

DATE: JULY 17, 1998

95-115

A4.0

HUMAN
RESOURCE CENTER
BASEMENT REMODEL
KALISPELL • MONTANA

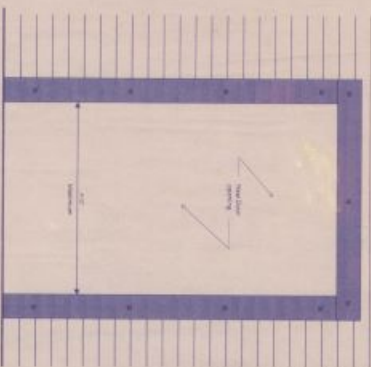
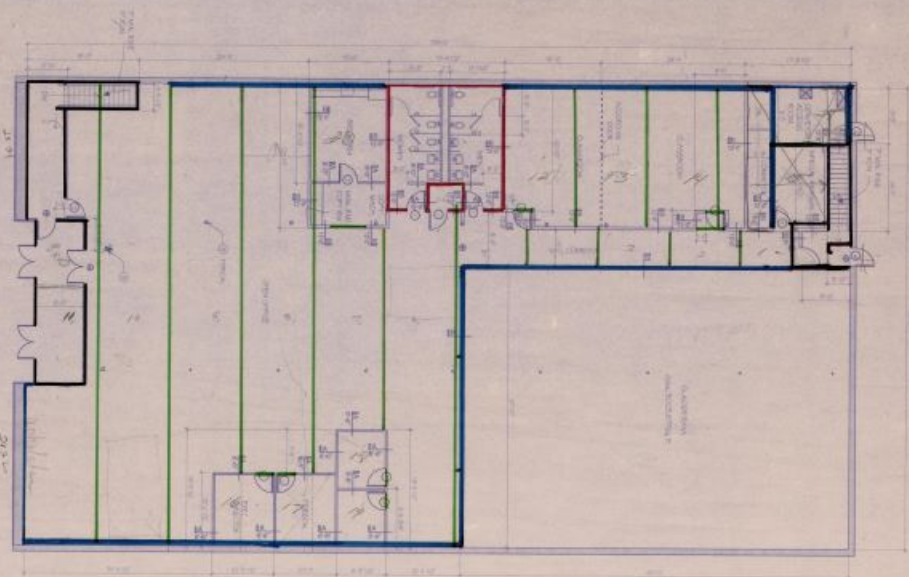
Architects
Design
Group

NO. 1 SUNSET PLAZA • KALISPELL, MONTANA • 406-937-7199

ARCHITECTS A.T.A.
MICHAEL A. BIRNBAUM
MICHAEL A. BIRNBAUM
FRANK J. NO. 1000



1.15.13
 1.16.13
 1.17.13
 1.18.13
 1.19.13
 1.20.13
 1.21.13
 1.22.13
 1.23.13
 1.24.13
 1.25.13
 1.26.13
 1.27.13
 1.28.13
 1.29.13
 1.30.13
 1.31.13
 1.32.13
 1.33.13
 1.34.13
 1.35.13
 1.36.13
 1.37.13
 1.38.13
 1.39.13
 1.40.13
 1.41.13
 1.42.13
 1.43.13
 1.44.13
 1.45.13
 1.46.13
 1.47.13
 1.48.13
 1.49.13
 1.50.13
 1.51.13
 1.52.13
 1.53.13
 1.54.13
 1.55.13
 1.56.13
 1.57.13
 1.58.13
 1.59.13
 1.60.13
 1.61.13
 1.62.13
 1.63.13
 1.64.13
 1.65.13
 1.66.13
 1.67.13
 1.68.13
 1.69.13
 1.70.13
 1.71.13
 1.72.13
 1.73.13
 1.74.13
 1.75.13
 1.76.13
 1.77.13
 1.78.13
 1.79.13
 1.80.13
 1.81.13
 1.82.13
 1.83.13
 1.84.13
 1.85.13
 1.86.13
 1.87.13
 1.88.13
 1.89.13
 1.90.13
 1.91.13
 1.92.13
 1.93.13
 1.94.13
 1.95.13
 1.96.13
 1.97.13
 1.98.13
 1.99.13
 2.00.13



4 DOOR DETAIL
NOT TO SCALE

Key	
Light brown server area	27' x 10' 6"
V.C.T. Area	500 sq ft
Scanning display	20' x 20'
Dark brown carpet	472 sq ft 58' x 12'

KEY NOTES

- 1 20 MIN. DOOR
 - 2 60 MIN. DOOR
 - 3 ALL COLUMNS TO PROVIDE LIFT FROM TYPICAL
- 1 HR. ROOF / CEILING ASSEMBLY TO BE PROVIDED THROUGHOUT

WALL TYPES

- A 5/8" GYPSUM WALL BOARD
2 X 4 WOOD STUDS
5/8" GYPSUM WALL BOARD
 - B 5/8" GYPSUM WALL BOARD
5/8" GYPSUM WALL BOARD
- SOUND INSULATION
WALL TYPE
WALL HEIGHT
9'-0" (IF NOT SHOWN)

HUMAN RESOURCE CENTER
KALISPELL • MONTANA

Architects Design Group

ARCHITECTS A.J. & JAMES W. SCHMIDT
JOHN P. PETERSON
WENDY A. ABRAHAMSON
TRACY ANDERSON

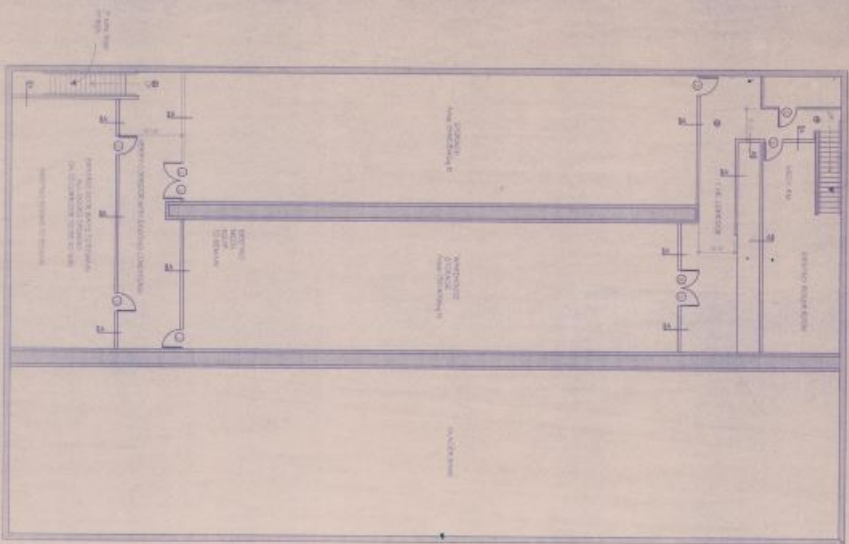
NO. 1 SUMMIT PLAZA • KALISPELL, MONTANA • 406-287-7121

MAIN FLOOR
SCALE
1/8" = 1'-0"

JULY 26, 1994

94-131

A1.0



KEY NOTES

- ① 20 MIN. DOOR
- ② 60 MIN. DOOR
- 1 1/2" ROOF / CEILING INSULATION PROVIDED THROUGHOUT

WALL TYPES



HUMAN RESOURCE CENTER
KALISPELL • MONTANA



NO. 1 SUNSET PLAZA • KALISPELL, MONTANA • 409-257-7122

ARCHITECTS DESIGN GROUP
3000 N. 10TH ST.
KALISPELL, MONTANA 59713
TEL: 409-257-7122
FAX: 409-257-7123
WWW.ADGDESIGN.COM

BASEMENT
SCALE
1/8" = 1'-0"

JULY 26, 1994

94-131

A1.1