

LAND FOR SALE



**10 Acres - Land @ County
Rd. 94, Pearland 77584**

FOR INFORMATION:
JOHN NGUYEN
281-923-0099
JOHN@JHUNTERPROPERTIES.COM

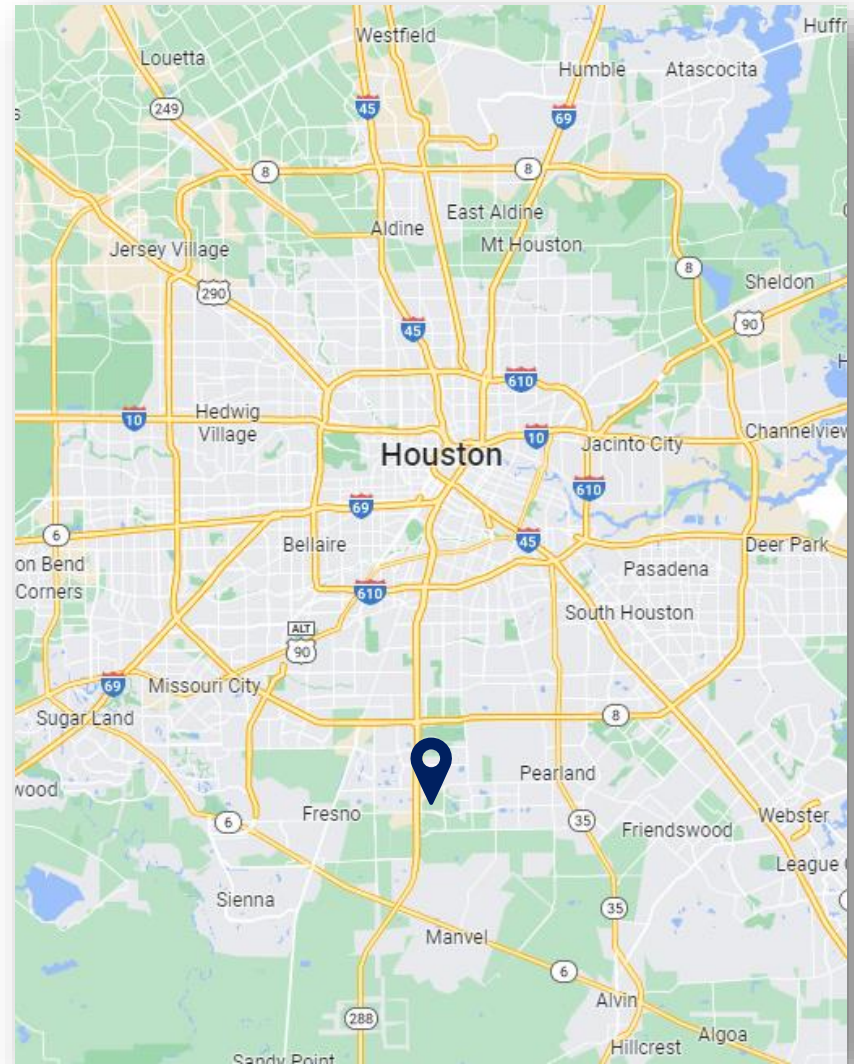
PROPERTY OVERVIEW

J. Hunter Properties is pleased to present 10 AC of land located in the City of Pearland in Brazoria County, with frontage on SH 288 and approved TX DOT Ingress/Egress. Strong demographics and a booming trade area makes this a great opportunity for multifamily, restaurants, retail, storage, hospitality, mixed-use, entertainment and medical development. Quick and easy access to newly completed SH 288 Toll Road.

Area retailers include The Pearland Town Center (Macy's & Dillard's), Costco, Target, Academy, Cinemark and H-E-B Plus, Area medical Includes HCA Pearland Medical Center, Encompass Health, Memorial Hermann (1 hospital & 3 medical office buildings) & Kelsey Seybold

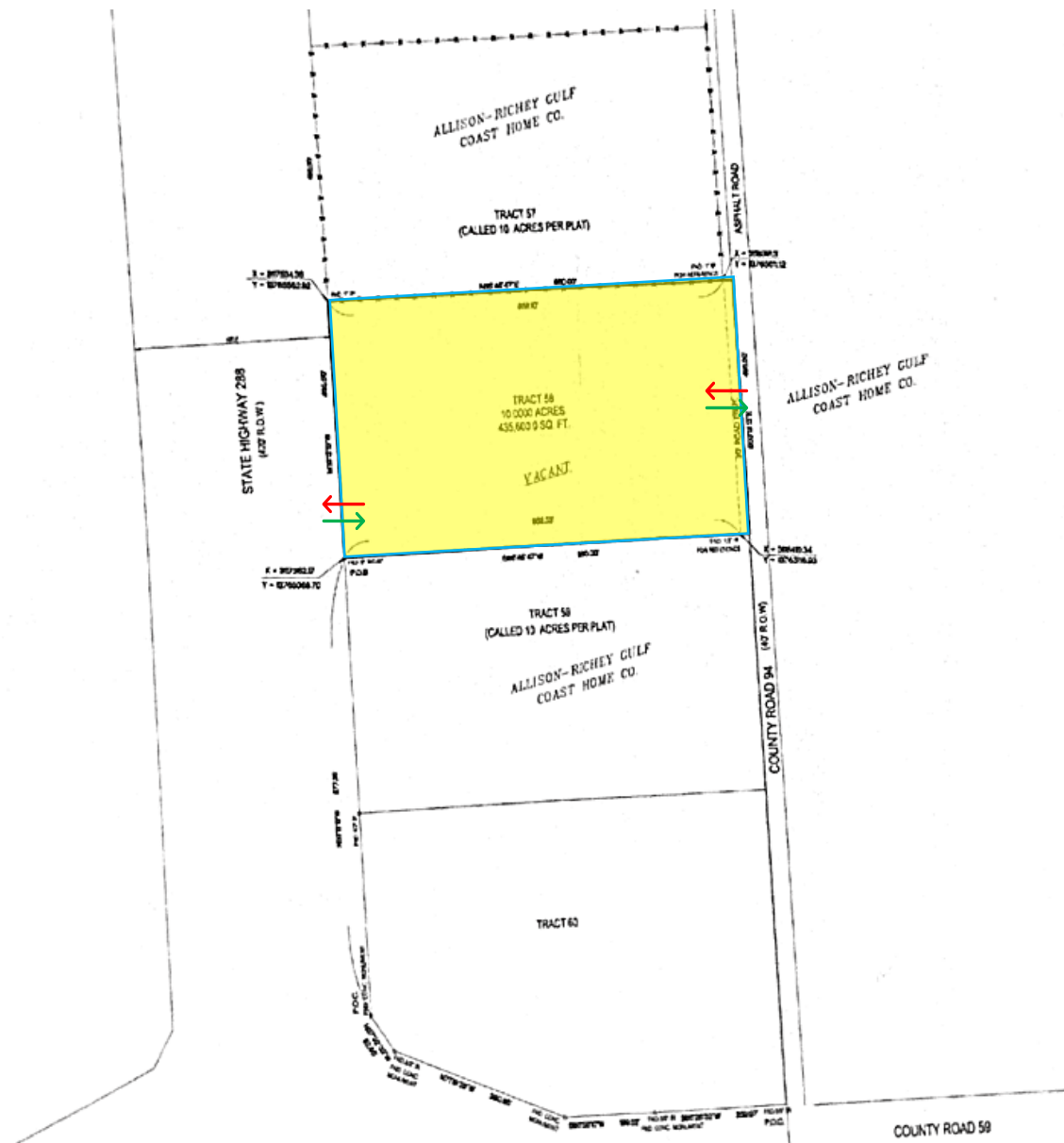
Size: 10 AC

Sale Price: Call for Information



Pearland Land – 10 Acres

SITE PLAN



Pearland Land - 10 Acres

DEMOGRAPHICS



POPULATION

1 Mile	3 Miles	5 Miles
10,820	86,273	202,257



NUMBER OF HOUSEHOLDS

1 Mile	3 Miles	5 Miles
4,345	29,955	67,721



MEDIAN AGE

1 Mile	3 Miles	5 Miles
34.6	34.1	33.7



HOUSEHOLD INCOME

1 Mile	3 Miles	5 Miles
\$101,485	\$131,015	\$107,168

RACE AND ETHNICITY

	1 Mile	3 Miles	5 Miles
WHITE	29.04%	30.31%	26.02%
BLACK OR AFRICAN AMERICAN	37.59%	32.24%	36.45%
ASIAN OR PACIFIC ISLANDER	16.82%	18.87%	11.50%
OTHER RACES	16.24%	18.03%	25.14%
HISPANIC	19.21%	22.83%	32.23%

AERIAL



Pearland Land - 10 Acres

AERIAL



Pearland Land - 10 Acres

IARS 1-0