

650 Alamo Pintado Rd, #101
SOLVANG, CA 93463

MEDICAL OFFICE
FOR LEASE



LENA BERCH | OWNER/BROKER
DRE #00864783
lena@sapphireselectproperties.com

CRISTINA BERCH
LEASING COORDINATOR
cristina@sapphireselectproperties.com

SAPPHIRE  **SELECT**
PROPERTIES, INC.

DRE #02193853
805.694.6355

WWW.SAPPHIRESELECTPROPERTIES.COM





Suite 101 SPECIFICS

LEASE PRICE: \$2.25/SF= \$1,476/MONTH

NNN: \$0.75/SF= \$492/MONTH

UNIT SIZE: 656 SF

LEVEL: GROUND-FLOOR

FLOORS: 3

TYPE: NNN

LEASE TERM: 3-5 YEARS

ESCALATIONS: 3% BUMPS

ZONING: PO (PROFESSIONAL OFFICE) IN

PARKING: PARKING LOT (UNASSIGNED)

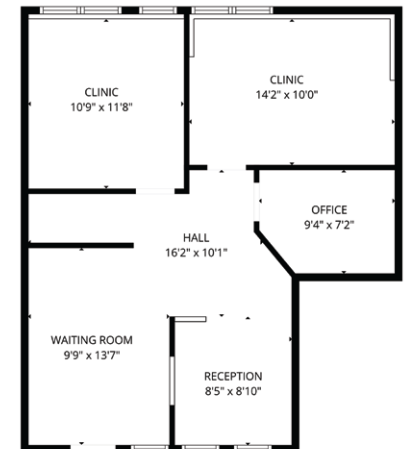
HVAC: YES

YEAR: 1988

ELEVATORS: YES

RESTROOMS: COMMON

**LOCATED NEAR
SYV COTTAGE
HOSPITAL**

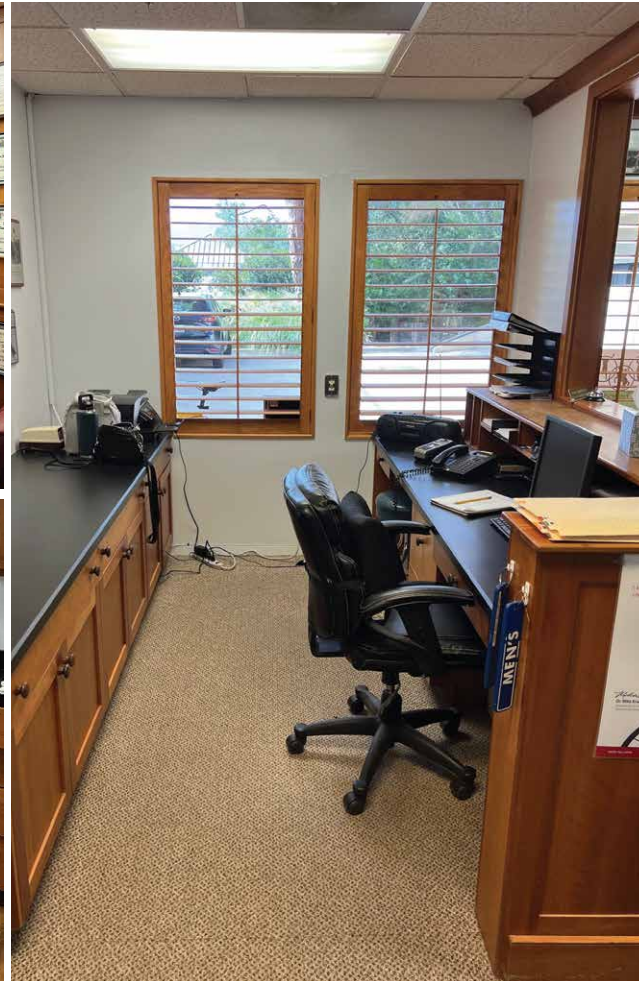


Lease Rate
\$1,968/MONTH

Suite 101 is a ground-floor medical office located in the well-maintained Village One Professional Building near SYV Cottage Hospital. This professional medical building features landscaped walkways, patio areas, and ample two-level parking. The suite includes a welcoming reception area, two exam rooms with sinks, and a private office or storage room. Conveniently located within walking distance to shopping, dining, medical services, the hospital, and a local transit stop—ideal for medical or wellness practices.

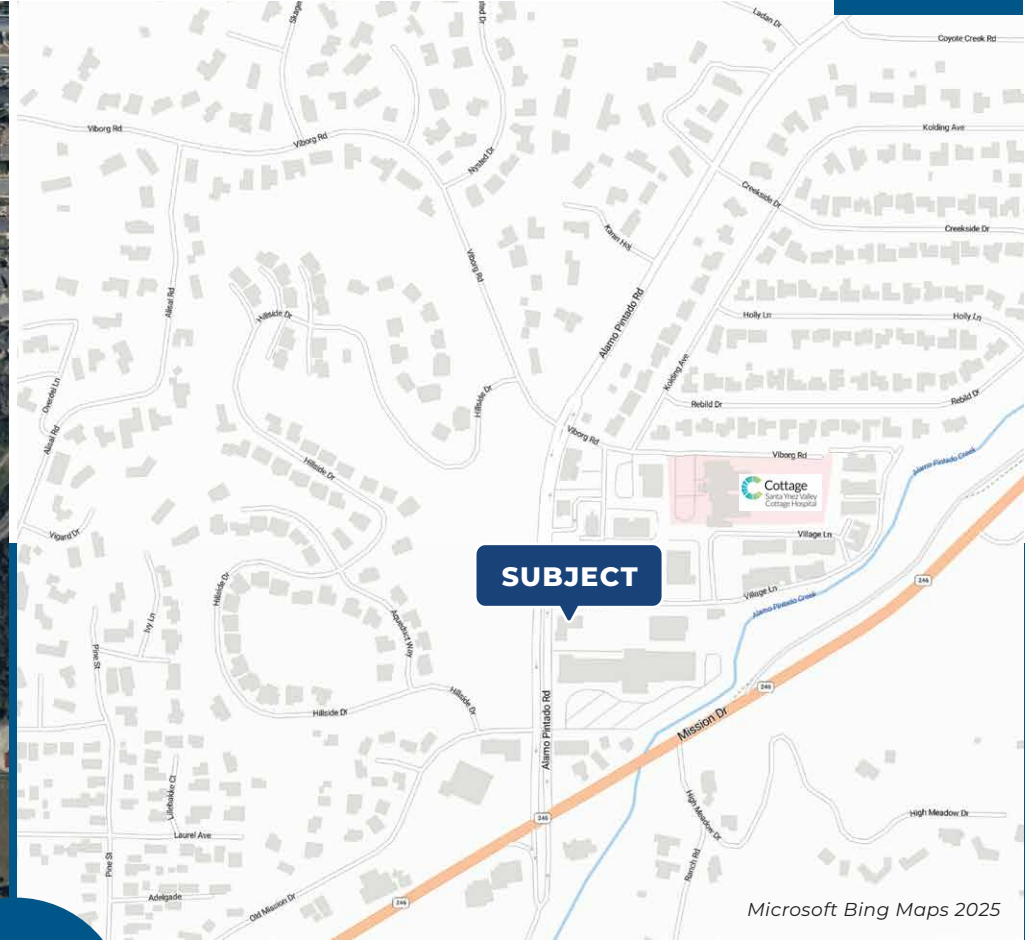
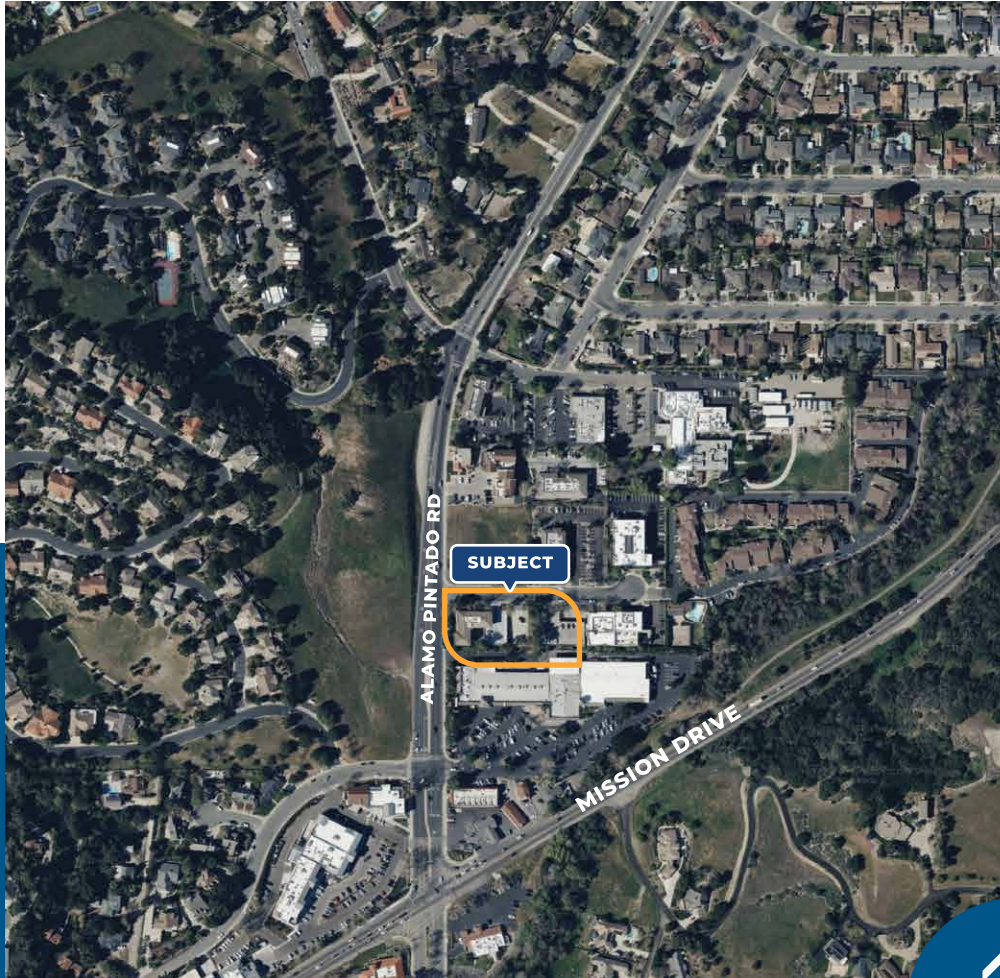
The information provided here has been obtained from the owner of the property or from other sources deemed reliable. We have no reason to doubt its accuracy, but we do not guarantee it.

Property
GALLERY
MEDICAL OFFICE SPACE



The information provided here has been obtained from the owner of the property or from other sources deemed reliable. We have no reason to doubt its accuracy, but we do not guarantee it.

Property AREA OVERVIEW



LENA BERCH

OWNER/BROKER | DRE #00864783

805.694.6355

lena@sapphireselectproperties.com



DRE #02193853

WWW.SAPPHIRESELECTPROPERTIES.COM

CRISTINA BERCH

LEASING COORDINATOR

805.680.2279

cristina@sapphireselectproperties.com

The information provided here has been obtained from the owner of the property or from other sources deemed reliable. We have no reason to doubt its accuracy, but we do not guarantee it.