

+/- 19,000 SF | AVAILABLE

INDUSTRIAL INVESTMENT SALE

915 5TH Avenue North, Birmingham, Alabama 35203

Jake Bottcher
205.313.4380
jbottcher@jhberry.com

Edwin Moss, SIOR, CCIM
205.313.4379
emoss@jhberry.com

Sonny Potter
205.313.4367
rspotter@jhberry.com

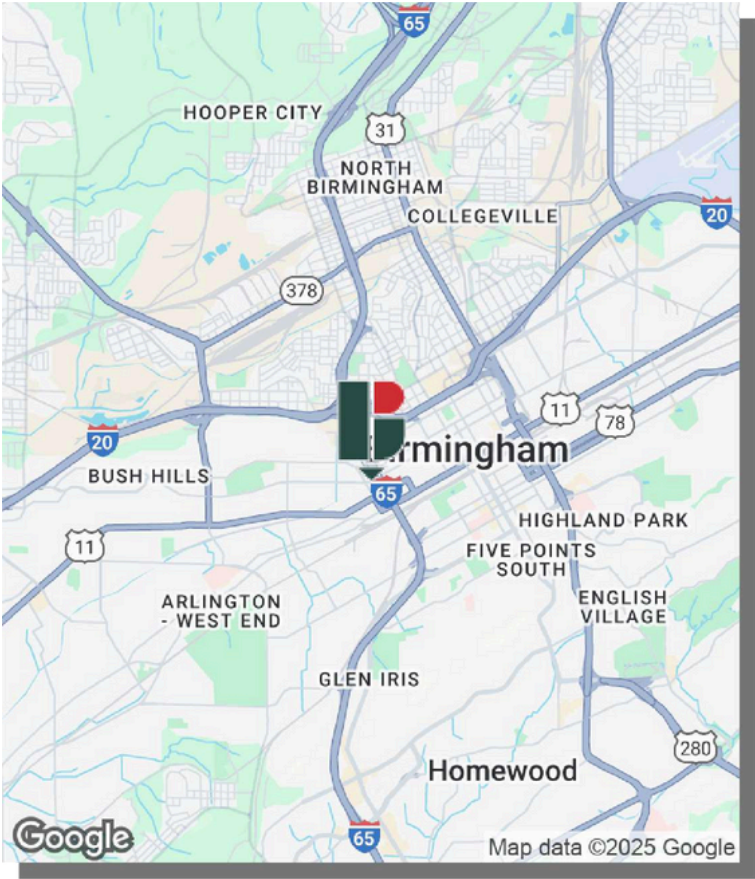
INDUSTRIAL
INVESTMENT SALE

915 5th Avenue North,
Birmingham, Alabama 35203

+/- 19,000 SF NOW AVAILABLE FOR SALE

PROPERTY DESCRIPTION

- +/- 19,000 SF office/warehouse on +/- .32 acres



INVESTMENT HIGHLIGHTS:

- Tenant:** Crescent CNC LLC
- Term:** 5,000 SF through December 14, 2026
 - 14,000 SF through December 14, 2025

BUILDING HIGHLIGHTS:	
Building Size:	+/- 19,000 SF
Expansion/Storage:	+/- 7,000 SF
Office Space:	+/- 2,525 SF
Drive In Doors:	Two (2) (10' x 10')
Ceiling Height:	12' 15'
Column Spacing:	55' x 30'
Building Renovated:	2019
Interstate Access: Two blocks to I-65 & less than 1 mile from I-20/59	
Small fenced area in rear	
Parts of warehouse heated and cooled	

PRICE:
\$816,000 (10% cap rate)

Jake Bottcher
205.313.4380
jbottcher@jhberry.com

Edwin Moss, SIOR, CCIM
205.313.4379
emoss@jhberry.com

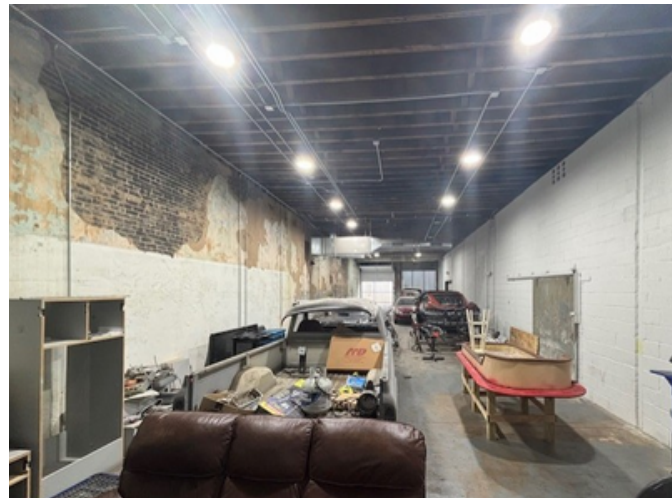
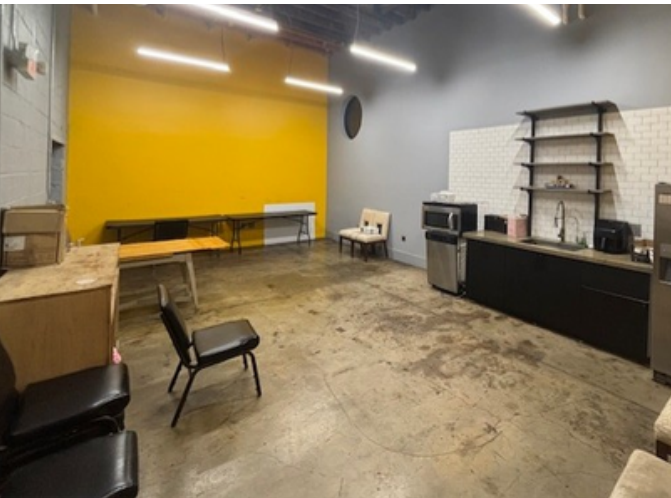
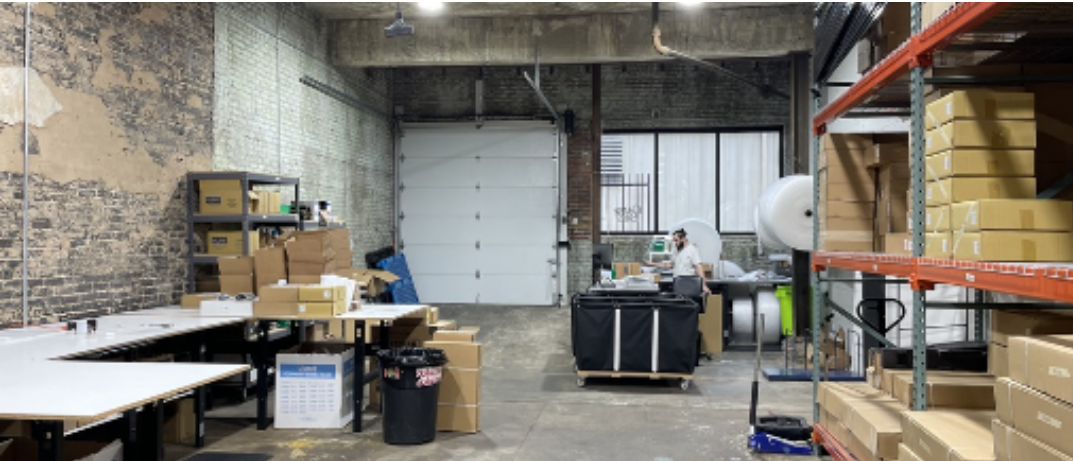
Sonny Potter
205.313.4367
rspotter@jhberry.com

INDUSTRIAL INVESTMENT SALE

915 5th Avenue North,
Birmingham, Alabama 35203

+/- 19,000 SF NOW AVAILABLE FOR SALE

PROPERTY PHOTOS



Jake Bottcher
205.313.4380
jbottcher@jhberry.com

Edwin Moss, SIOR, CCIM
205.313.4379
emoss@jhberry.com

Sonny Potter
205.313.4367
rspotter@jhberry.com