

# 5380

S RAINBOW BLVD  
LAS VEGAS, NV 89118

## SPRING VALLEY MEDICAL OFFICE I FOR LEASE

SUITES RANGING FROM  
**2,003 - 3,928 SF**



HEALTHCARE

**JAMIE KRAHNE**  
SENIOR VICE PRESIDENT  
702.216.2363 **CELL**  
jamiiek@dcghealthcare.com  
B.143850/PM.164496

**MIKE TYMCZYN**  
VICE PRESIDENT  
702.271.4004 **DIRECT**  
miket@dcghealthcare.com  
S.177844



## PROPERTY HIGHLIGHTS

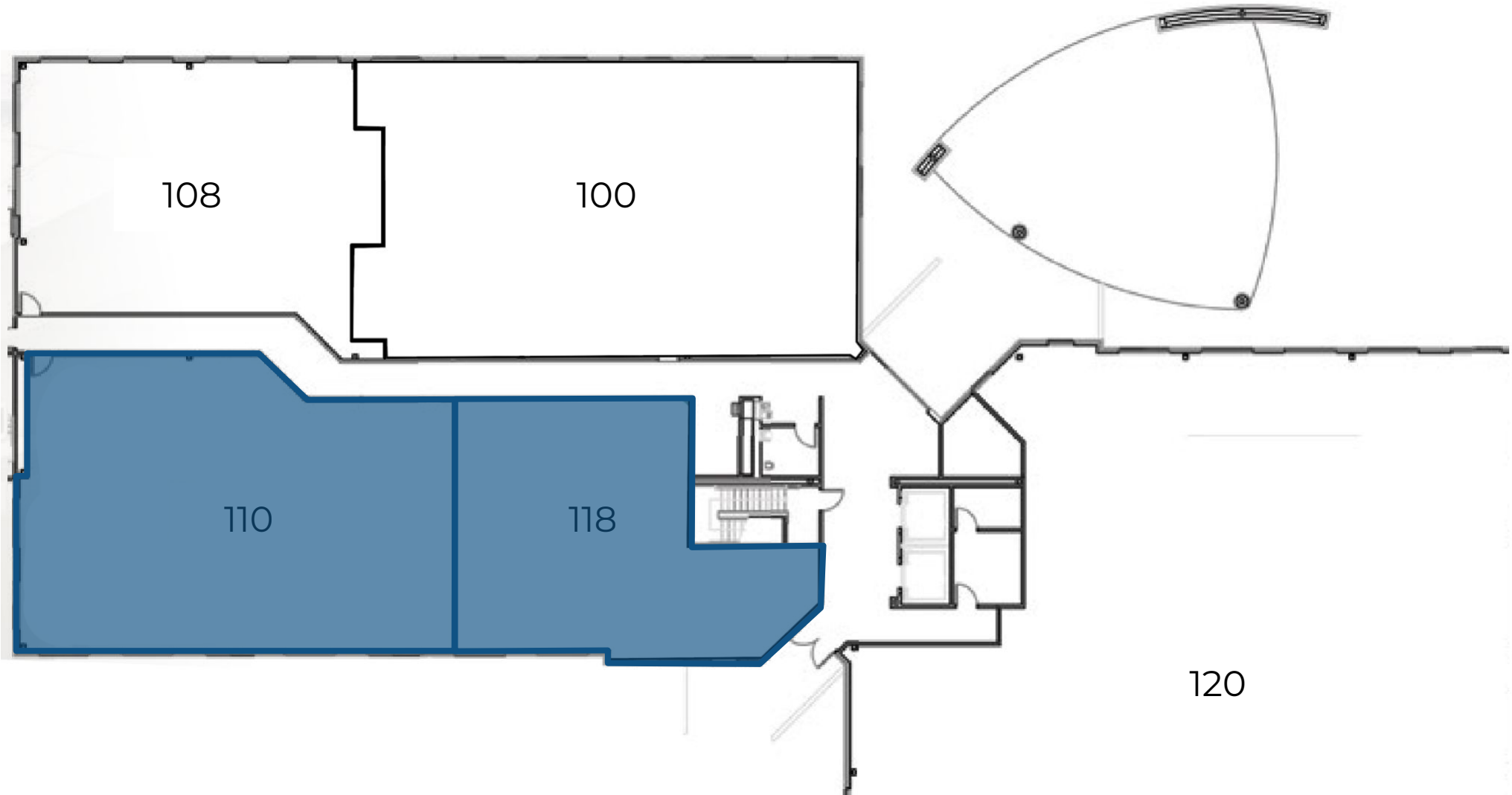
- On the campus of Spring Valley Hospital Medical Center
- Covered, reserved parking at no additional cost
- Easy access from I-15 and I-215
- Current specialties include: **Cardiology - Neurology - Internal Medicine - Podiatry**



**FIRST FLOOR**

**AVAILABLE SUITES**

SUITE 118	2,003 SF
SUITE 110	2,780 SF



**SECOND FLOOR**

**AVAILABLE SUITES**

**SUITE 210**

**2,300 SF**



**THIRD FLOOR**

**AVAILABLE SUITES**

**SUITE 330**

**3,928 SF**  
AVAILABLE 1/31/2025

