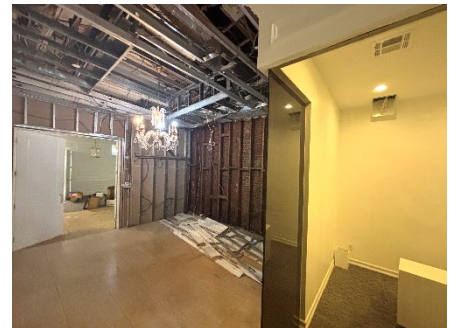
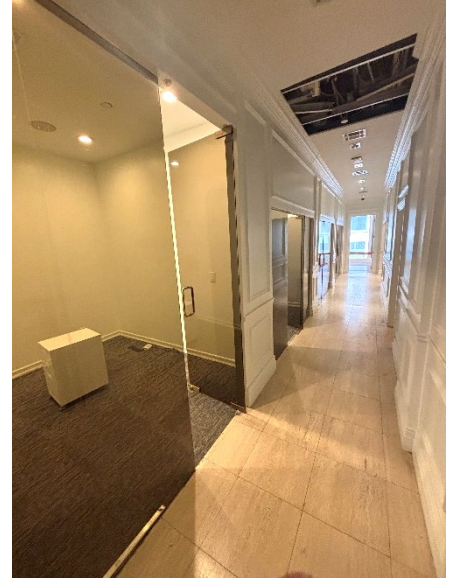


Bryant Park / Grand Central
433 FIFTH AVENUE
Entire 2nd Floor -- 3,350 RSF

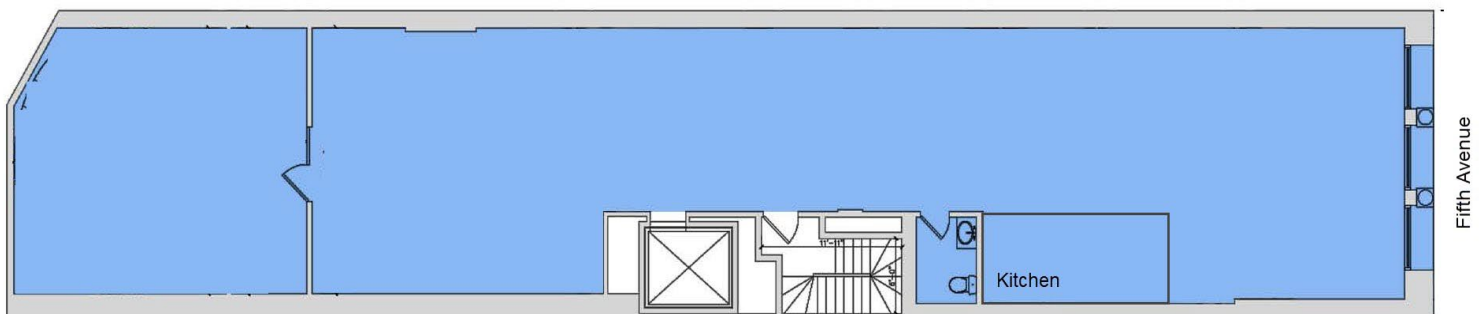


5TH AVE ACROSS FROM AMAZON HQ
HUGE WINDOWS
DRAMATIC AVENUE EXPOSURE
24/7 ACCESS
HIGH CEILING (12' PLUS)

ENTIRE FLOORS, DIRECT ELEV. ACCESS
PRIVATE RESTROOM + WET PANTRY
TENANT-CONTROLLED HVAC
DIRECT ELECTRIC METER
EXPOSED BRICK + WOOD FLOORS

Next to: Bryant Park, Grand Central, NY Public Library, Empire State Bldg, Amazon HQ
NEAREST SUBWAY: 4, 5, 6, 7, F, B, D, M, F, S + LIRR and Metro North

433 Fifth Avenue, 2nd Floor



EXCLUSIVE AGENTS:

RUDY DEDOMINICIS
917-566-9359
rudy@fpr.nyc

Full Commissions Paid

DAVID DYNAK
917-572-5746
david@fpr.nyc

Information contained herein is from sources deemed reliable but is subject to errors, omissions, change of price or term, and withdrawal without prior notice at any time.