



**CEDAR STREET**

**SUNSET DRIVE**

# Sunset Commercial Development

TURNBERRY DRIVE & SUNSET DRIVE, NORWALK, IA, 50125

**FOR SALE**

8.4 Acres | Community Commercial | C-2 Zoning



# CONCEPT PLAN



- FIRST OFFERING IS FOR AREA WITHIN THE DESIGNATED BLUE BOUNDARIES
- \$15 PSF FRONTAGE LOTS
- DRAWINGS DO NOT REFLECT STORM WATER REQUIREMENTS PER LOT



[illegible]

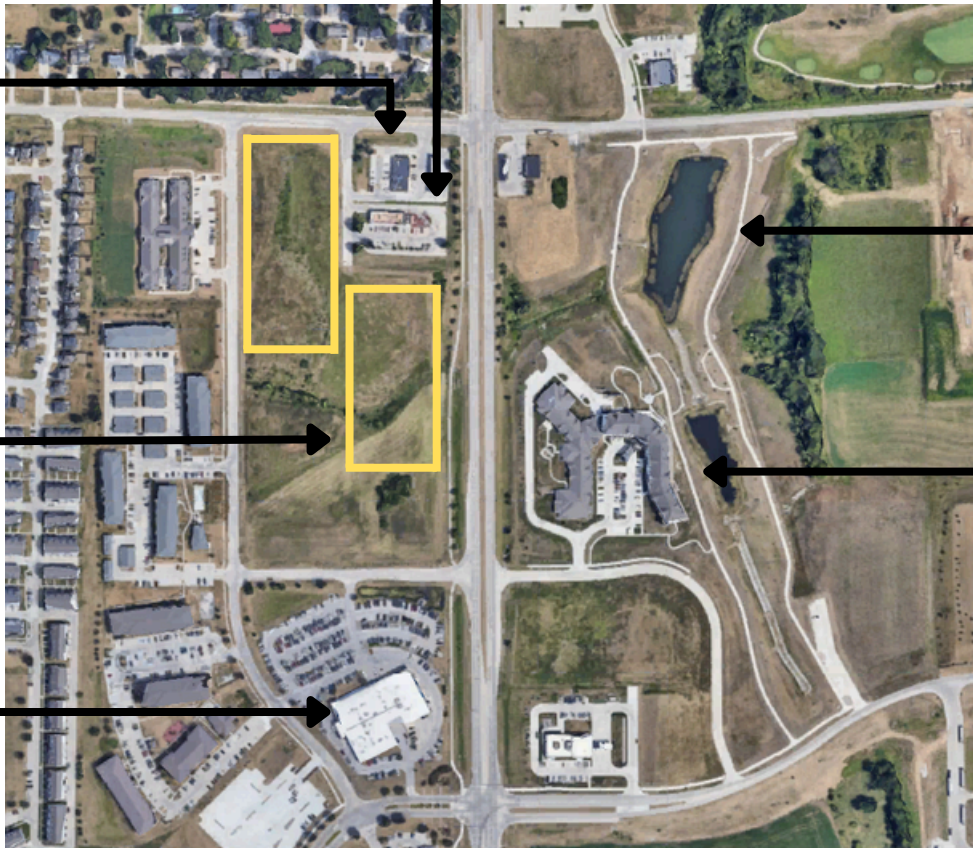
- NOT PLATTED CONCEPT ONLY
- SHOWS GENERIC CIRCULATION AND OUT LOTS
- DETENTION PLAN IS NOT FORMALIZED
- INTERNAL ROADS ARE PRIVATE AND SUPPORTED BY AN ASSOCIATION

# CORPORATE NEIGHBORS



OUTLINED  
SUBJECT PARCELS

**GREGG YOUNG**  
CHEVROLET | NORWALK



HOLLAND PARK



*Craig King*  
COMMERCIAL REALTOR

515-314-6904  
CRAIGKING1@KW.COM

*Manny Toribio*  
COMMERCIAL REALTOR

(319) 331-5542  
MANNY@TEAMIRG.COM