



Small Bay Industrial with Showroom

West Business Park: 6605 Zadar Ave, Lubbock, TX 79407

Currently Under Construction

Property Features

This 2,700 SF new construction property, delivering May 2026, offers a well-balanced layout ideal for a variety of industrial or flex users. The space includes a large office, showroom/lobby, breakroom, & restroom, along with a 1,700 SF warehouse featuring (3) 10'x10' overhead doors and 12'-16' eave heights. The site also includes a paved yard/parking area secured with 7' steel fencing, providing both functionality and security. Excellently positioned within West Business Park just off the Marsha Sharp Freeway between Lubbock and Wolfforth, the property benefits from strong access, visibility, and connectivity to the surrounding region.

Offering Summary

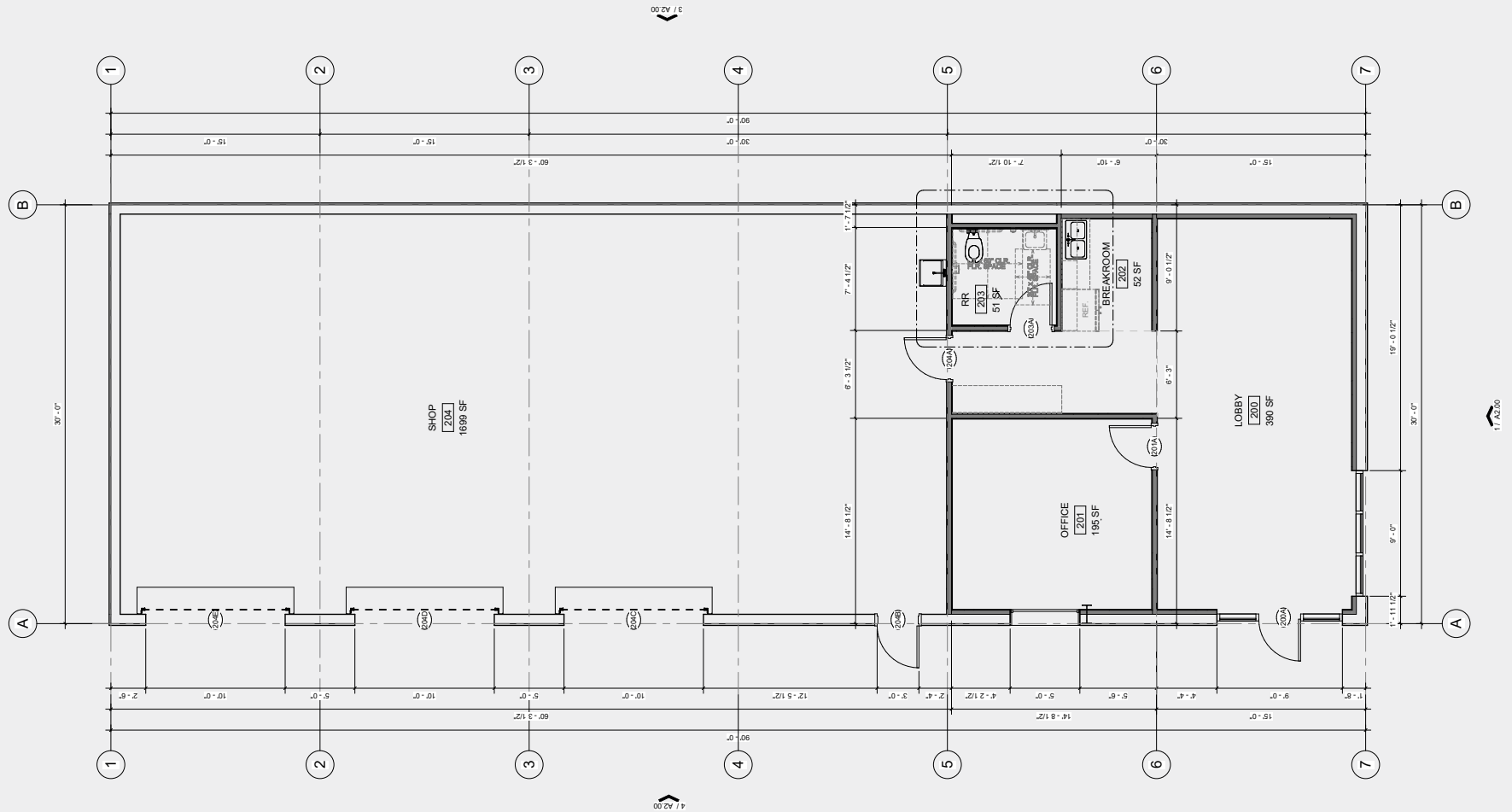
BUILDING SIZE	2,700 SF
LOT SIZE	0.3 AC
LEASE PRICE	\$13/SF
AVAILABLE	May 2026

NO WARRANTY OR REPRESENTATION, EXPRESS OR IMPLIED, IS MADE AS TO THE ACCURACY OF THE INFORMATION CONTAINED HEREIN, AND THE SAME IS SUBMITTED SUBJECT TO ERRORS, OMISSIONS, CHANGE OF PRICE, RENTAL OR OTHER CONDITIONS, PRIOR SALE, LEASE OR FINANCING, OR WITHDRAWAL WITHOUT NOTICE, AND OF ANY SPECIAL LISTING CONDITIONS IMPOSED BY OUR PRINCIPALS NO WARRANTIES OR REPRESENTATIONS ARE MADE AS TO THE CONDITION OF THE PROPERTY OR ANY HAZARDS CONTAINED THEREIN ARE ANY TO BE IMPLIED.

Joe Magby
joe@naiwheelhouse.com
+1 806 200 3244
naiwheelhouse.com

AVAILABLE

The Property



AVAILABLE

Location

