



# The Design Center

3445 Winton Place  
Rochester, NY 14623

Spaces Available: 1,500 - 10,536 SF

- » Ideal for Industrial Space or Showroom
- » Two Story Upscle Office Building
- » Ample Glass Walls and Skylights
- » Adjacent to Trio Grill, The Distillery, Wendy's, and Many Other Businesses

The Design Center is a sleek, upscale two-story office building. There are three retail users and the remainder if offices. The building has tons for glass walls and skylights to bring in all natural light. This is a fast growing corridor, close to I-390 and I-590 and has easy access at the corner of Winton and Brighton Henrietta Townline Rd.

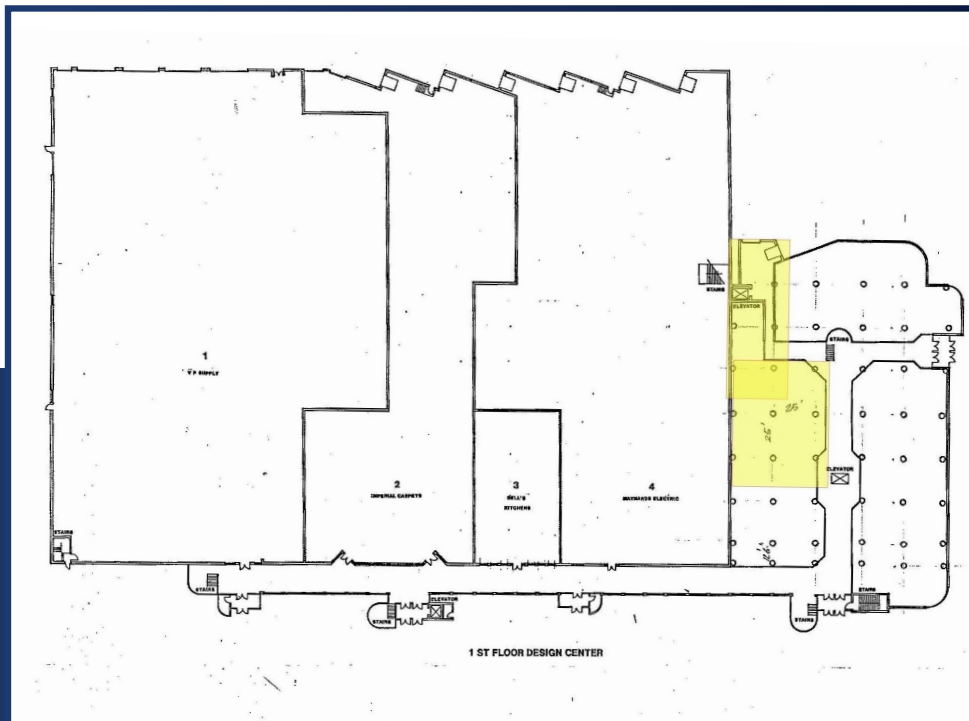


**Real Estate** *it's in our blood!*  
[www.flaummgmt.com](http://www.flaummgmt.com)

Contact Us: 400 Andrews Street #500 | Rochester, NY 14604 | 585.546.4866



Demographics	1 Mile	3 Miles	5 Miles
Population	6,205	58,626	193,393
Households	2,930	24,980	85,175
Average HH Income	\$89,512	\$106,888	\$85,989
Average Age	37.0	39.0	35.4



Let our experienced professionals help you today. With decades of experience, our team brings a wealth of knowledge in real estate, brokerage, and project management.

**Real Estate** *it's in our blood!*  
[www.flaummgf.com](http://www.flaummgf.com)