

# NEW DEVELOPMENT GROUND

## For Sale



### 6.98 Acres of Land Available

#### 69 Highway & Atkinson Road (NWQ), Pittsburg, Kansas



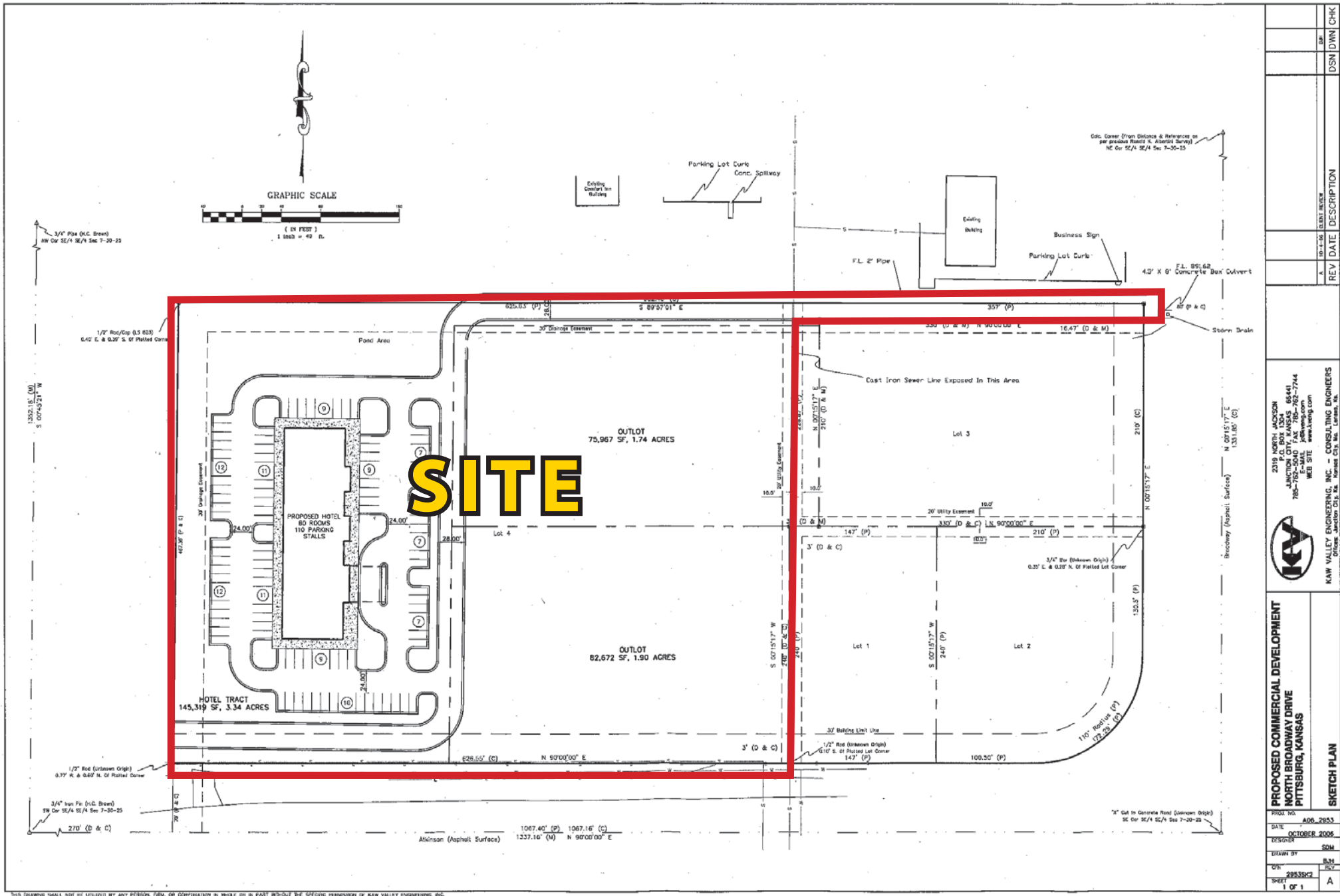
Estimated Population  
26,827

Average Household Income  
\$52,782

Five Mile Radius

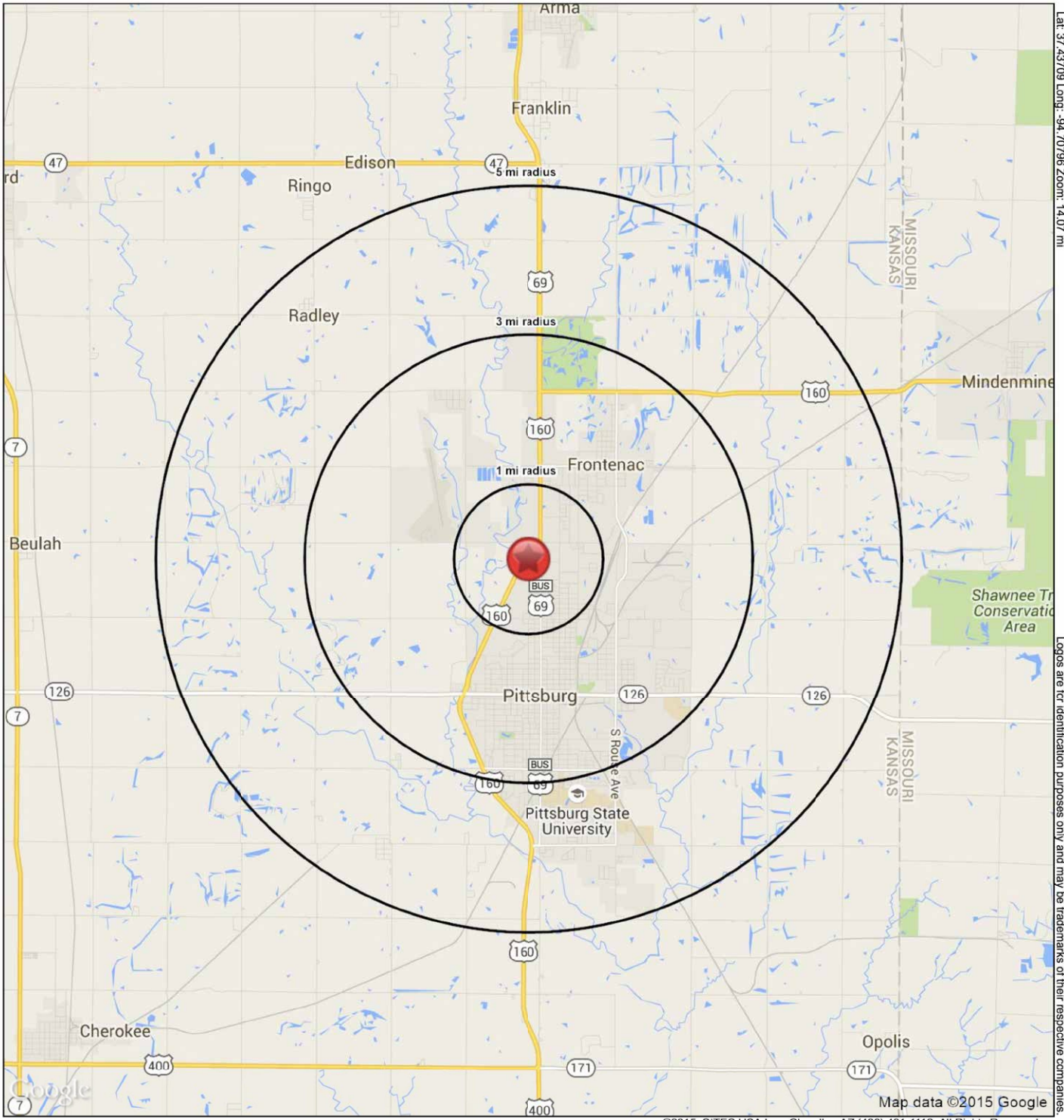
- Just north of Home Depot and Walmart Supercenter
- 6.98 acres of Development Land - For Sale
- In the heart of Pittsburg's main retail corridor

# 69 Highway & Atkinson Road (NWQ), Pittsburg, Kansas



2019 NORTH JACKSON P.O. BOX 1304 ANNEX 785-762-5040 FAX 785-852-7744 E-MAIL jpk@kve.com WEB SITE www.kve.com		REV	DATE	DESCRIPTION
K&V K&V VALLEY ENGINEERING, INC. - CONSULTING ENGINEERS Office: Jackson City, Mo. Warren, Mo.		A	10-1-20	SKETCH PLAN
PROPOSED COMMERCIAL DEVELOPMENT NORTH BROADWAY DRIVE PITTSBURG, KANSAS		DESIGNER	DATE	PROJECT NO.
DRAWN BY		DATE	DATE	DATE
CHK		DATE	DATE	DATE
SHEET		DATE	DATE	DATE
1 OF 1		DATE	DATE	DATE





Lat: 37.43709 Long: -94.70796 Zoom: 14.07 mi

Logos are for identification purposes only and may be trademarks of their respective companies.

©2015, SITES USA Inc., Chandler, AZ (480) 491-1112. All Rights Reserved.

**69 Highway & 29th Street**  
**Pittsburg, KS 66762-2628**

*November 2015*

This map was produced using data from private and government sources deemed to be reliable. The information herein is provided without representation or warranty

# SUMMARY PROFILE

2000-2010 Census, 2015 Estimates with 2020 Projections

Calculated using Weighted Block Centroid from Block Groups

Lat/Lon: 37.4371/-94.7080

RS1

## 69 Highway & 29th Street

Pittsburg, KS 66762-2628

1 mi radius 3 mi radius 5 mi radius

	1 mi radius	3 mi radius	5 mi radius	
<b>POPULATION</b>	2015 Estimated Population	3,249	18,427	26,827
	2020 Projected Population	3,283	18,585	26,849
	2010 Census Population	3,311	18,398	26,696
	2000 Census Population	3,117	18,044	25,563
	Projected Annual Growth 2015 to 2020	0.2%	0.2%	-
	Historical Annual Growth 2000 to 2015	0.3%	0.1%	0.3%
	2015 Median Age	31.7	31.3	30.8
<b>HOUSEHOLDS</b>	2015 Estimated Households	1,356	7,679	10,960
	2020 Projected Households	1,418	8,005	11,327
	2010 Census Households	1,356	7,537	10,713
	2000 Census Households	1,279	7,622	10,467
	Projected Annual Growth 2015 to 2020	0.9%	0.9%	0.7%
	Historical Annual Growth 2000 to 2015	0.4%	-	0.3%
<b>RACE AND ETHNICITY</b>	2015 Estimated White	86.2%	87.7%	87.6%
	2015 Estimated Black or African American	2.9%	2.8%	3.0%
	2015 Estimated Asian or Pacific Islander	1.4%	1.6%	2.6%
	2015 Estimated American Indian or Native Alaskan	0.7%	0.8%	0.7%
	2015 Estimated Other Races	8.8%	7.1%	6.1%
	2015 Estimated Hispanic	8.9%	7.6%	6.3%
<b>INCOME</b>	2015 Estimated Average Household Income	\$42,619	\$47,764	\$52,782
	2015 Estimated Median Household Income	\$33,458	\$36,781	\$38,761
	2015 Estimated Per Capita Income	\$17,917	\$20,062	\$21,858
<b>EDUCATION (AGE 25+)</b>	2015 Estimated Elementary (Grade Level 0 to 8)	4.7%	4.1%	3.7%
	2015 Estimated Some High School (Grade Level 9 to 11)	8.8%	5.8%	4.9%
	2015 Estimated High School Graduate	28.5%	25.0%	23.4%
	2015 Estimated Some College	23.5%	27.6%	25.6%
	2015 Estimated Associates Degree Only	8.9%	9.6%	9.4%
	2015 Estimated Bachelors Degree Only	18.4%	17.6%	20.8%
	2015 Estimated Graduate Degree	7.3%	10.4%	12.2%
<b>BUSINESS</b>	2015 Estimated Total Businesses	234	1,173	1,497
	2015 Estimated Total Employees	3,033	12,226	16,019
	2015 Estimated Employee Population per Business	13.0	10.4	10.7
	2015 Estimated Residential Population per Business	13.9	15.7	17.9

This report was produced using data from private and government sources deemed to be reliable. The information herein is provided without representation or warranty.

## ABOUT PITTSBURG, KANSAS

Pittsburg is a town in Crawford County in the Ozark region of Southeast Kansas, 27 miles south of Fort Scott, Kansas, 96 miles west of Springfield, Missouri and 137 miles northeast of Tulsa, Oklahoma. It is the most populous city both in Crawford County and in Southeast Kansas. The population was 19,243 at the 2000 census.

Pittsburg was founded on May 20, 1876, named after and in honor of the city of Pittsburgh, Pennsylvania. Franklin Playter is credited with being the city's founder, establishing a government from its earlier incarnation as a coal mining camp in the late 1870s.

Pittsburg is the home to Pittsburg State University and to two high schools, Pittsburg High School (United School District 250) and St. Mary's-Colgan High School.

## HERITAGE

The city has a rich cultural heritage from many European mine workers who settled in and around Pittsburg. There is a grocery store operating under an Italian name (Pullucca's) in the nearby town of Frontenac. The city was founded in 1876 and incorporated in 1880. It is situated in the center of productive coal fields.

An annual celebration unique to Pittsburg is Little Balkans Days, which is a celebration of the community's European ethnic heritage featuring games, entertainment, a parade, competitions and arts and crafts. Little Balkans Days is held in conjunction with the Labor Day holiday.

The city is the birthplace and childhood home of broadcast journalism pioneer Paul White, legendary news director for CBS in the 1930s and 1940s.

## DEMOGRAPHICS

As of the census<sup>GR2</sup> of 2000, there were 19,243 people, 7,980 households and 4,213 families residing in the city. The population density was 596.8/km<sup>2</sup> (1,546.2/mi<sup>2</sup>). There were 8,855 housing units at an average density of 274.6/km<sup>2</sup> (711.5/mi<sup>2</sup>). The people are 92.34% White, 2.61% Black/African American, 1.08% Native American, 1.94% Asian, 0.17% Pacific Islander, 1.90% from other races and 2.08% from two or more races. Hispanic of any race were 3.84% of the population.

## WHY PITTSBURG?

The City of Pittsburg maintains an excellent industrial business climate through an aggressive economic program. Pittsburg was founded around coal mining and manufacturing, and these beginnings have grown into a highly diversified industrial base. Pittsburg is the home of Superior Industries International, Inc.; Watco Companies, Inc.; Names & Numbers; Miller's Professional Imaging; National Mills; Pitsco; National Pizza Company and many others.

The Business and Technology Institute of Pittsburg State University is an umbrella organization providing managerial, financial and technical assistance to all businesses and industries. Pittsburg State University, the Kansas Technology Enterprise Corporation and the City of Pittsburg recently formed the Alliance for Technology Commercialization to work with high-tech entrepreneurs starting a business. This alliance will also have seed capital available to invest in these new companies.

With more than 3,500 industrial workers, the area's 41 manufacturing companies make durable and soft goods such as plastic bags and wrappers, aluminum automobile wheels, business forms, sportswear, machine shop products, screen printing equipment, animal and pet foods, as well as plastic and clay pipe, custom photography enhancement and food products, to name just a few.