

LEASE

+/- 2,650 SF Warehouse

4020 NE 5TH TERRACE

Oakland Park, FL 33334

—

PRESENTED BY:

STEVE DAVIS

C: 954.650.7824
steve@svncr.com

KEITH KIDWELL, SIOR, CCIM

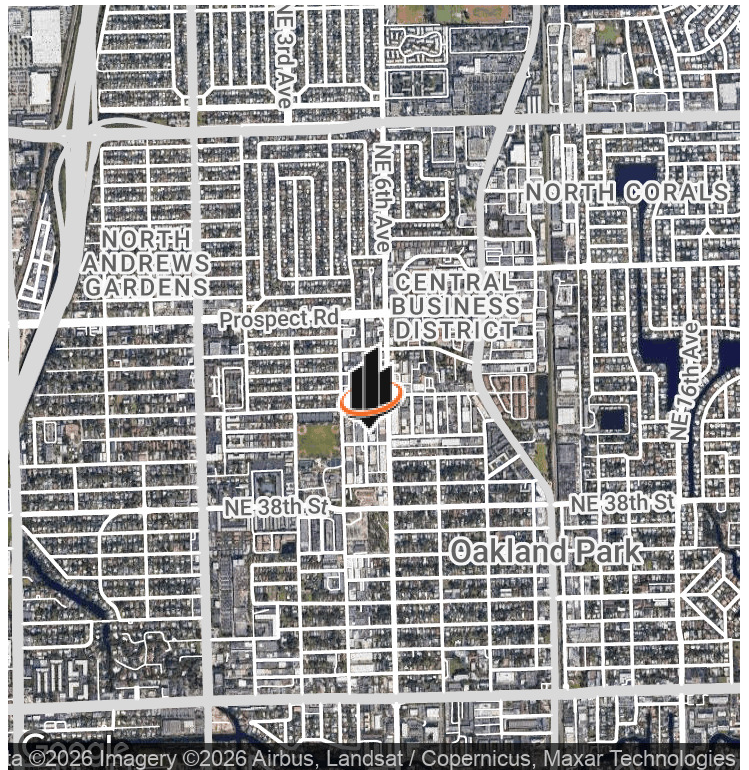
C: 954.234.8777
keith@svncr.com

LES BYRON, SIOR, CCIM

C: 954.401.4713
les@svncr.com



PROPERTY SUMMARY



OFFERING SUMMARY

AVAILABLE SF:	2,650 SF
LEASE RATE:	\$20.00 SF/yr (G)
BUILDING SIZE:	8,000 SF

PROPERTY OVERVIEW

One bay available at 2,650 SF. Property is well located in the City of Oakland Park with easy access to I-95 via Commercial Blvd or Oakland Park Blvd.

PROPERTY HIGHLIGHTS

- Clear Height: 11'
- Two Overhead Doors (10' x 12') & (10' x 10')
- Drive Through Capability
- New LED Lighting
- Renovations Underway

STEVE DAVIS
C: 954.650.7824
steve@svncr.com

KEITH KIDWELL, SIOR, CCIM
C: 954.234.8777
keith@svncr.com

LES BYRON, SIOR, CCIM
C: 954.401.4713
les@svncr.com