



# For Sublease

## Existing buildout for professional office use

- 6,365 RSF
- Term thru 9/30/2025
- Fully built out behavioral health suite
- 20+ private offices, Kitchen, and Break Room
- Ample free parking
- Retail on ground floor

16220 Frederick Road  
Suite 502

Gaithersburg, MD 20877

**Caroline Hartigan**

301 287 9948

[Caroline.Hartigan@jll.com](mailto:Caroline.Hartigan@jll.com)

**Matt Haas**

443 452 1511

[Matt.Haas@jll.com](mailto:Matt.Haas@jll.com)

#### DISCLAIMER

Although information has been obtained from sources deemed reliable, neither Owner nor JLL makes any guarantees, warranties or representations, express or implied, as to the completeness or accuracy as to the information contained herein. Any projections, opinions, assumptions or estimates used are for example only. There may be differences between projected and actual results, and those differences may be material. The Property may be withdrawn without notice. Neither Owner nor JLL accepts any liability for any loss or damage suffered by any party resulting from reliance on this information. If the recipient of this information has signed a confidentiality agreement regarding this matter, this information is subject to the terms of that agreement. ©2017 Jones Lang LaSalle IP, Inc. All rights reserved.

>>Check local legal requirements on the legal Connect page and paste additional requirements here, replacing this line and make black<<



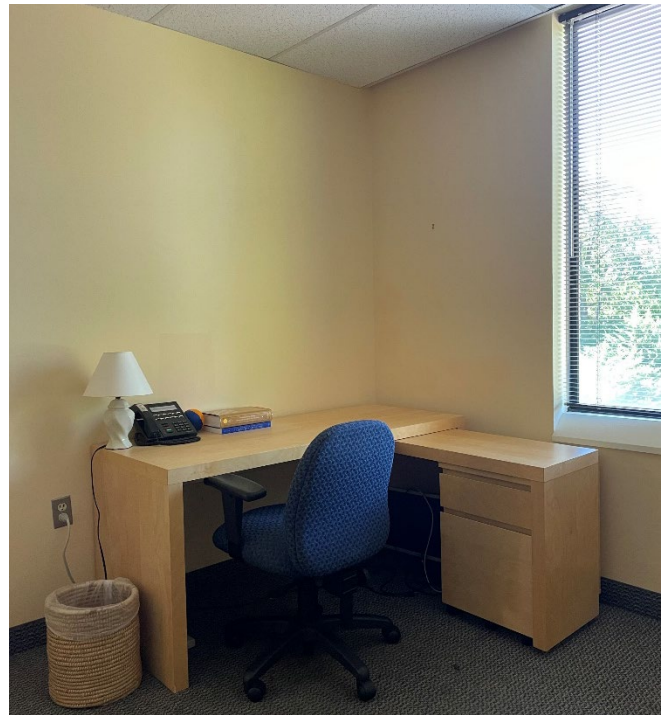


**DISCLAIMER**

Although information has been obtained from sources deemed reliable, neither Owner nor JLL makes any guarantees, warranties or representations, express or implied, as to the completeness or accuracy as to the information contained herein. Any projections, opinions, assumptions or estimates used are for example only. There may be differences between projected and actual results, and those differences may be material. The Property may be withdrawn without notice. Neither Owner nor JLL accepts any liability for any loss or damage suffered by any party resulting from reliance on this information. If the recipient of this information has signed a confidentiality agreement regarding this matter, this information is subject to the terms of that agreement. ©2017 Jones Lang LaSalle IP, Inc. All rights reserved.

>>Check local legal requirements on the legal Connect page and paste additional requirements here, replacing this line and make black<<



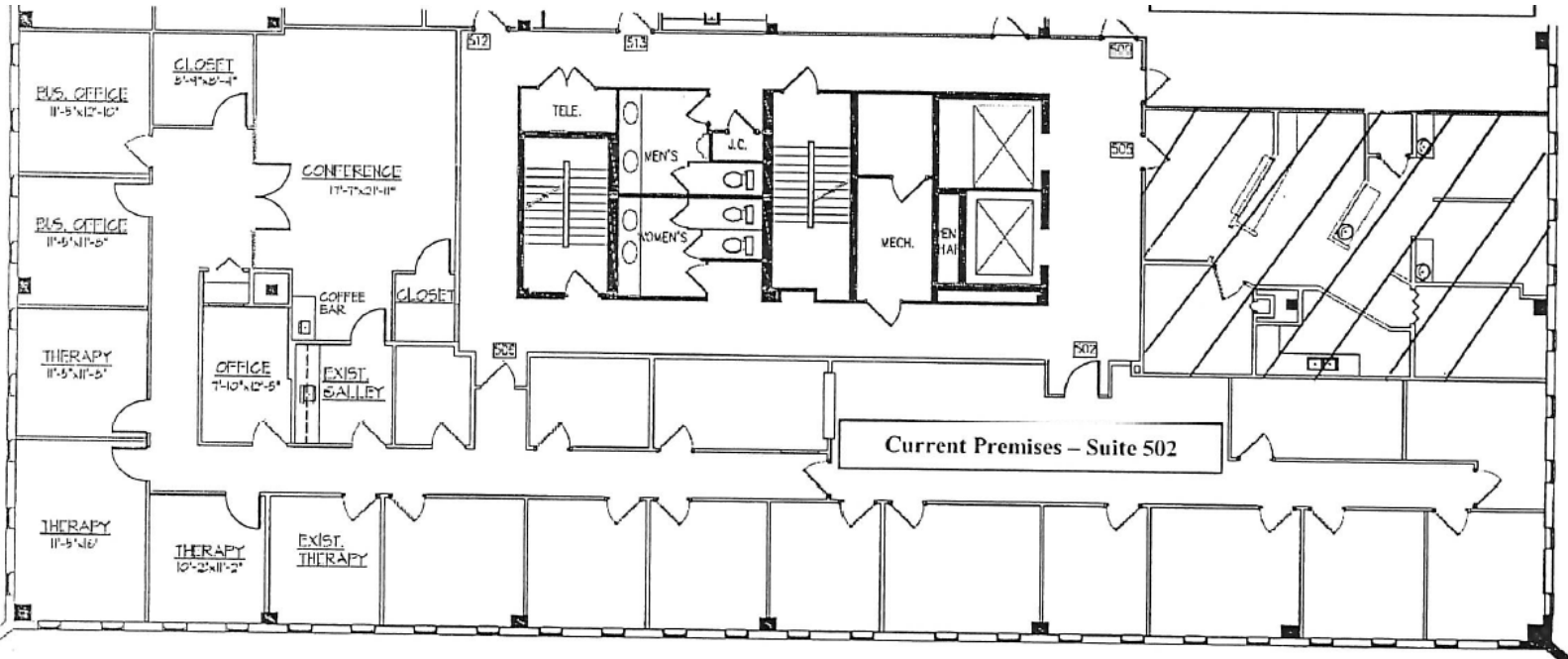


**DISCLAIMER**

Although information has been obtained from sources deemed reliable, neither Owner nor JLL makes any guarantees, warranties or representations, express or implied, as to the completeness or accuracy as to the information contained herein. Any projections, opinions, assumptions or estimates used are for example only. There may be differences between projected and actual results, and those differences may be material. The Property may be withdrawn without notice. Neither Owner nor JLL accepts any liability for any loss or damage suffered by any party resulting from reliance on this information. If the recipient of this information has signed a confidentiality agreement regarding this matter, this information is subject to the terms of that agreement. ©2017 Jones Lang LaSalle IP, Inc. All rights reserved.

>>Check local legal requirements on the legal Connect page and paste additional requirements here, replacing this line and make black<<





**DISCLAIMER**

Although information has been obtained from sources deemed reliable, neither Owner nor JLL makes any guarantees, warranties or representations, express or implied, as to the completeness or accuracy as to the information contained herein. Any projections, opinions, assumptions or estimates used are for example only. There may be differences between projected and actual results, and those differences may be material. The Property may be withdrawn without notice. Neither Owner nor JLL accepts any liability for any loss or damage suffered by any party resulting from reliance on this information. If the recipient of this information has signed a confidentiality agreement regarding this matter, this information is subject to the terms of that agreement. ©2017 Jones Lang LaSalle IP, Inc. All rights reserved.

>>Check local legal requirements on the legal Connect page and paste additional requirements here, replacing this line and make black<<

