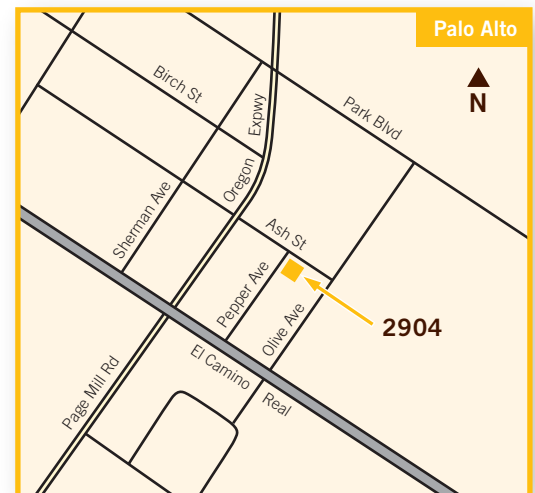




## ±970 sq ft office/R&D space 2904 Ash Street, Palo Alto

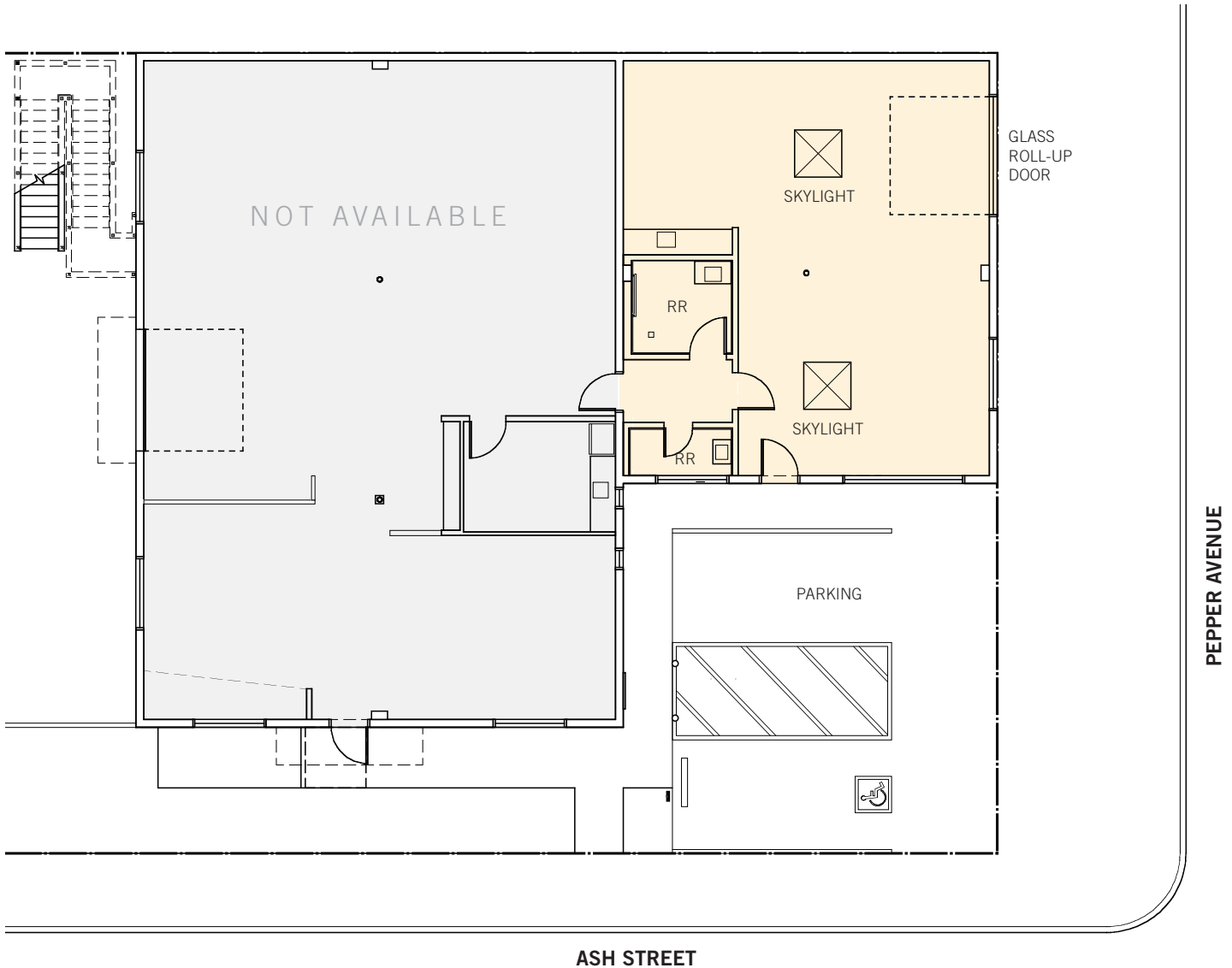
- **Rare Small South Palo Alto R&D Unit**
- Abundant natural light with skylight, windows, glass storefront and roll-up door
- Expansive north-facing exposure minimizes glare
- 100% HVAC open ceiling environment
- Kitchenette
- Industrial lighting and finishes
- Shared restroom core with shower
- Sealed concrete floor
- Walking distance to California Avenue Train Station and California Avenue shops and restaurants
- One off-street parking space available plus abundant unregulated street parking
- Available May 15, 2026



**Geordie McKee · Dave Conklin** 650.321.3040  
 Lic. 01257296 Lic. 01036562

±970 sq ft office/R&D space

2904 Ash Street, Palo Alto



Floor plans may not be to scale. The information contained herein has been obtained from sources we deem reliable. We have no reason to doubt its accuracy, but we do not guarantee it. All information should be verified prior to lease.

**Geordie McKee · Dave Conklin** 650.321.3040  
Lic. 01257296 Lic. 01036562

±970 sq ft office/R&D space  
2904 Ash Street, Palo Alto



Floor plans may not be to scale.  
The information contained  
herein has been obtained from  
sources we deem reliable. We  
have no reason to doubt its  
accuracy, but we do not  
guarantee it. All information  
should be verified prior to lease.

**Geordie McKee · Dave Conklin** 650.321.3040  
Lic. 01257296 Lic. 01036562