



CROWNSVILLE TOWN STATION

1321 GENERALS HIGHWAY | CROWNSVILLE, MARYLAND 21032

FOR
LEASE



MACKENZIE

COMMERCIAL REAL ESTATE SERVICES, LLC

PROPERTY OVERVIEW

HIGHLIGHTS:

- Professional office building with easy access to Baltimore and Annapolis
- Charming local neighborhood
- Monument signage for tenants
- Hands-on management
- Direct entry
- Private restroom
- Modern finishes

AVAILABLE:

SUITE 102: 1,604 RSF
(AVAILABLE 2/1/25)

BUILDING SIZE:

21,069 SF

PARKING RATIO:

5.5/1,000 SF

ZONING:

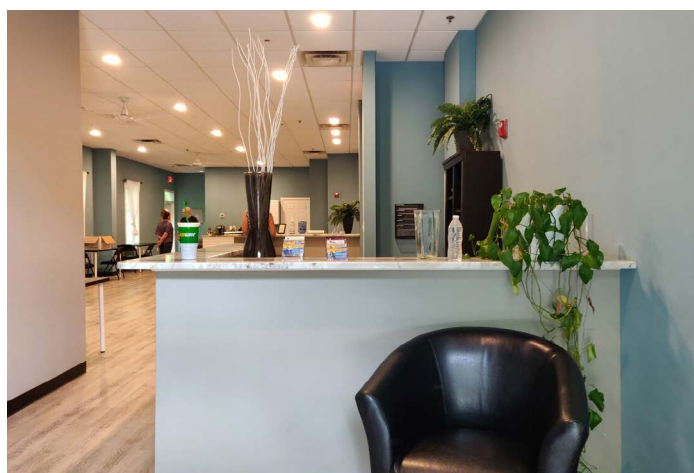
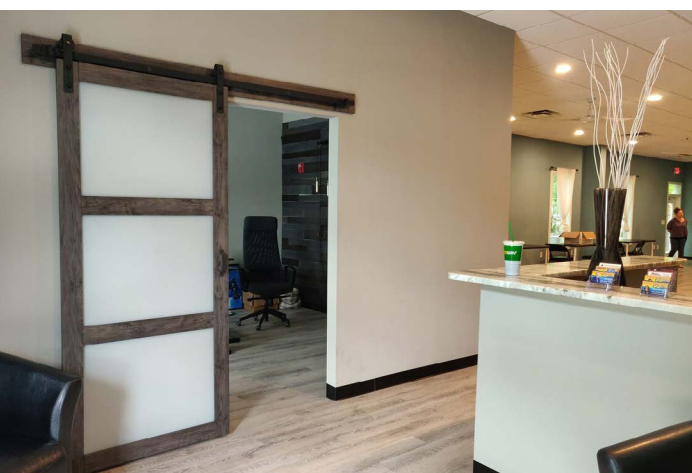
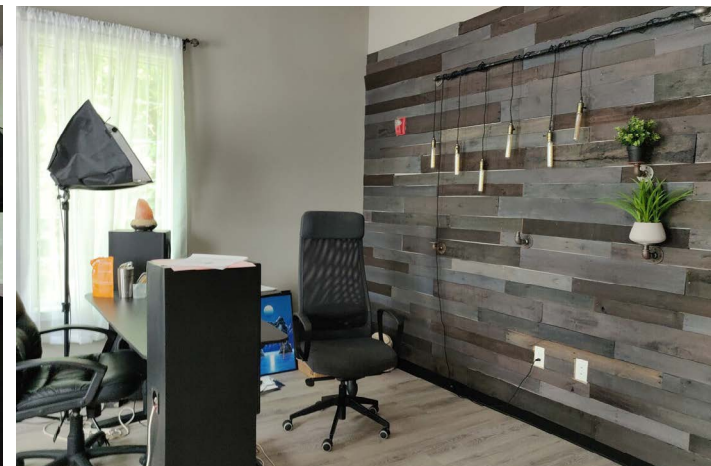
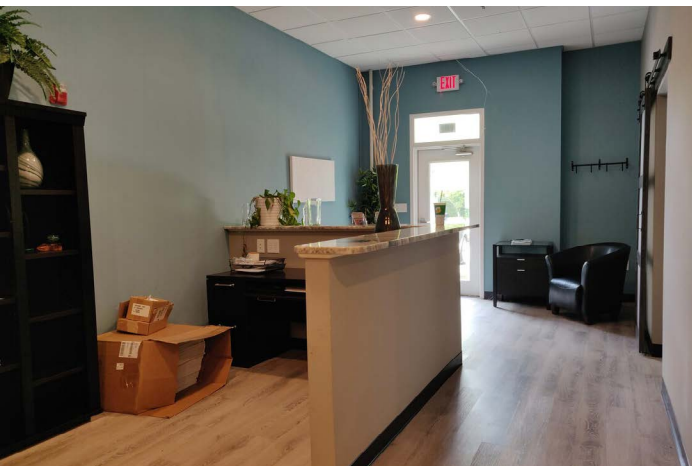
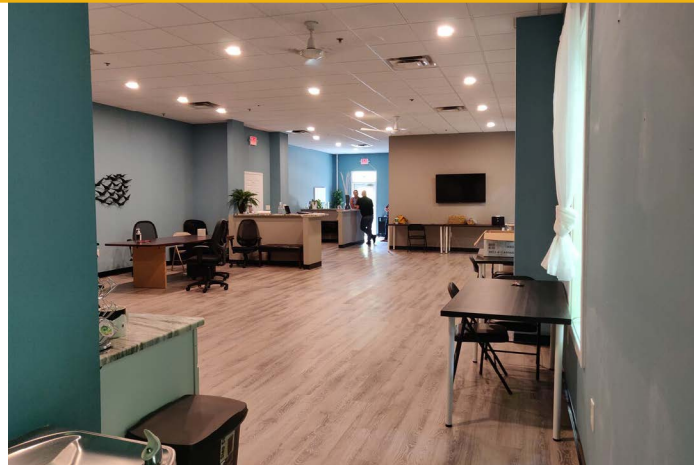
C2 (COMMERCIAL OFFICE DISTRICT)

PRICE:

\$21.00/SF, NNN



INTERIOR PHOTOS



DEMOGRAPHICS

2024

RADIUS:

1 MILE

3 MILES

5 MILES

RESIDENTIAL POPULATION



316

6,288

40,114

DAYTIME POPULATION



609

2,848

67,985

AVERAGE HOUSEHOLD INCOME



\$214,711

\$174,419

\$153,563

NUMBER OF HOUSEHOLDS



173

4,852

32,720

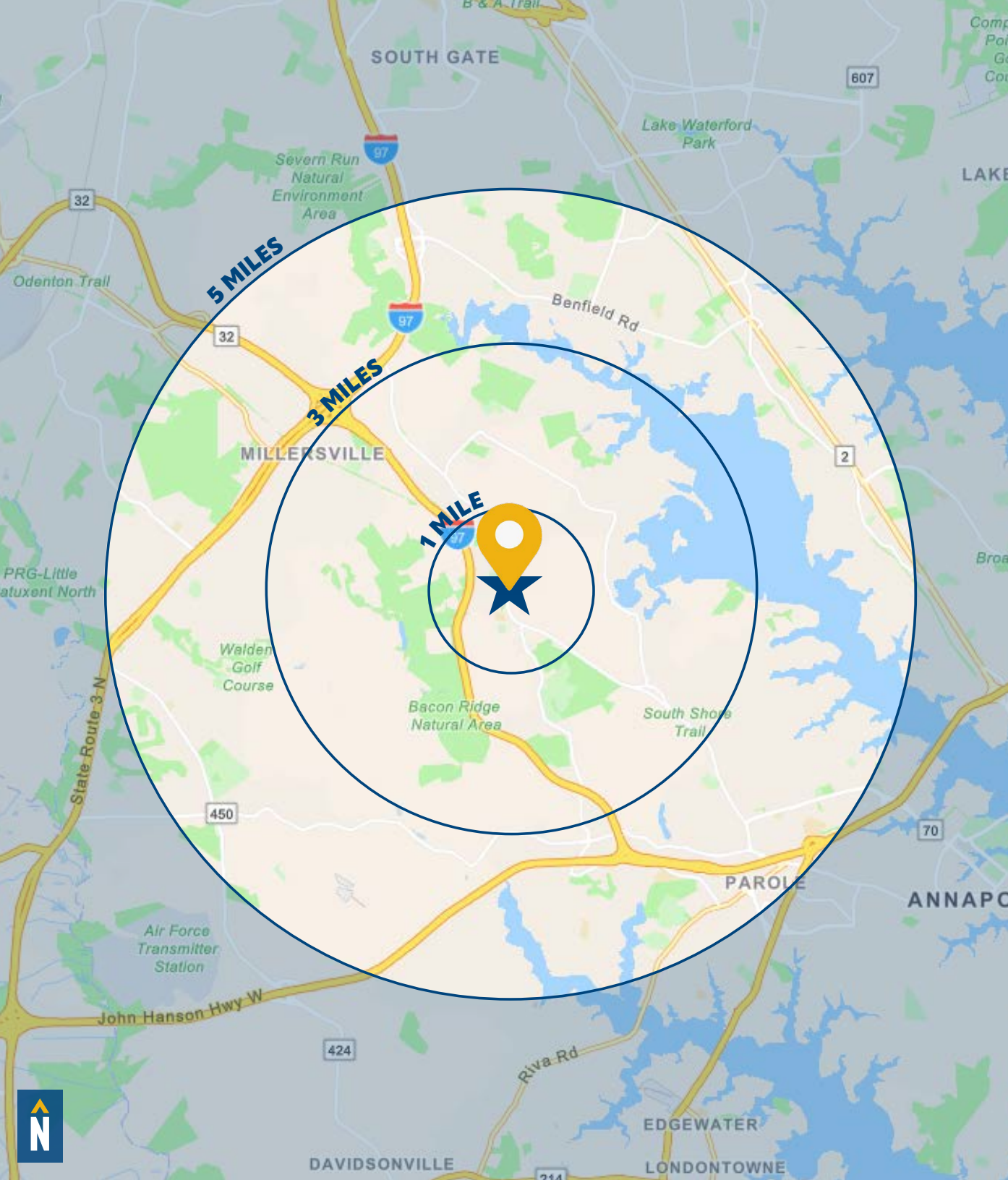
MEDIAN AGE



48.9

47.6

44.0



FOR MORE INFO **CONTACT:**

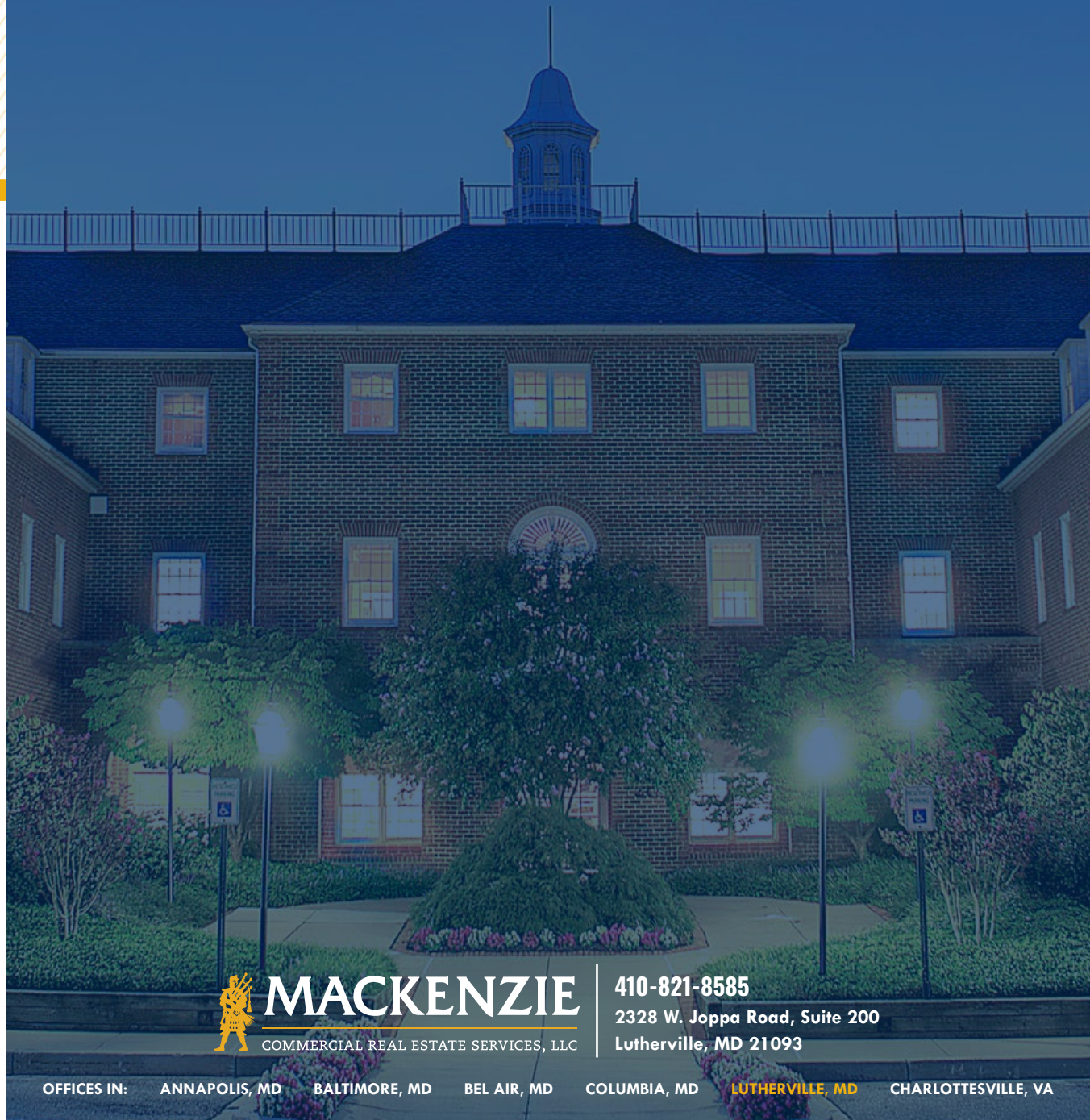


BETHANY HOBBS

SENIOR REAL ESTATE ADVISOR

410.953.0359

BHOBBS@mackenziecommercial.com



MACKENZIE

COMMERCIAL REAL ESTATE SERVICES, LLC

410-821-8585

**2328 W. Joppa Road, Suite 200
Lutherville, MD 21093**

OFFICES IN: ANNAPOLIS, MD BALTIMORE, MD BEL AIR, MD COLUMBIA, MD **LUTHERVILLE, MD** CHARLOTTESVILLE, VA

www.MACKENZIECOMMERCIAL.com



VISIT **PROPERTY PAGE** FOR MORE INFORMATION 

No warranty or representation, expressed or implied, is made as to the accuracy of the information contained herein, and same is submitted subject to errors, omissions, change of price, rental or other conditions, withdrawal without notice, and to any specific listing conditions imposed by our principals.