

**1313 SW Lee Blvd, Lawton, OK 73501**

Ste A - \$1,700.00/Mo, Ste B - \$1,700.00/Mo

RETAIL PROPERTY FOR LEASE



**LEASE RATE**

**\$1,700/MO EACH**

**OFFERING SUMMARY**

Available SF: ±2,500 - 5,000 SF

Lease Rate: \$1,700 -  
\$3,000/Mo

Lot Size: ±1.72 Acres

Year Built: 1958

Building Size: ±25,000 SF

Zoning: C-5

Submarket: Waldman

**PROPERTY OVERVIEW**

Large open retail space for lease located on high traffic SW Lee Blvd. This space, formerly a beauty supply store, offers two suites at ±2,500sf each with a restroom. Strip center offers ample parking and signage. This space can be leased together for a total of ±5,000sf for \$3,000/Mo. Strip center businesses include Chandelier Liquor, Hot Wok Chinese Food, Motor Vehicle Tag Agency, Discount Food, Family Dollar, Roys Auto Supply, and Chiefs Smokin Icehouse.

**PROPERTY HIGHLIGHTS**

- Large open retail space located on high traffic SW Lee Blvd
- Two suites available at ±2,500sf each, or leased together for a total of ±5,000sf
- Strip center offers ample parking and signage on building and pylon

**JASON WELLS**

580.353.6100

jwells@insightbrokers.com

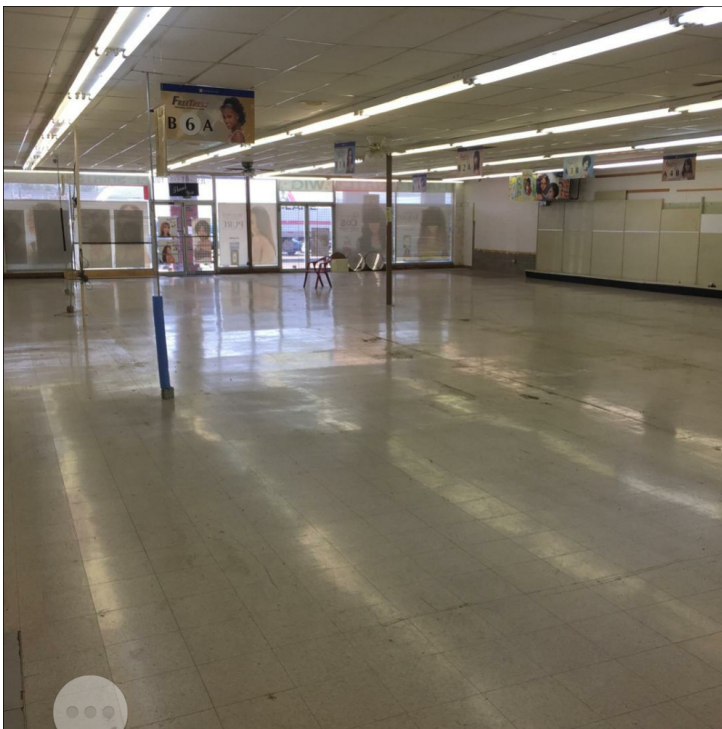
Measurements and other information are obtained from Owner and/or other reliable sources and are offered as an aid for investment analysis. Although deemed reliable, information is not guaranteed and is provided subject to errors, omissions, prior sale or withdrawal.

Insight Commercial Real Estate Brokerage, LLC

**1313 SW Lee Blvd, Lawton, OK 73501**

Ste A - \$1,700.00/Mo, Ste B - \$1,700.00/Mo

RETAIL PROPERTY FOR LEASE



**JASON WELLS**

580.353.6100

[jwells@insightbrokers.com](mailto:jwells@insightbrokers.com)



Ste A - \$1,700.00/Mo, Ste B - \$1,700.00/Mo

## RETAIL PROPERTY FOR LEASE



## JASON WELLS

580.353.6100

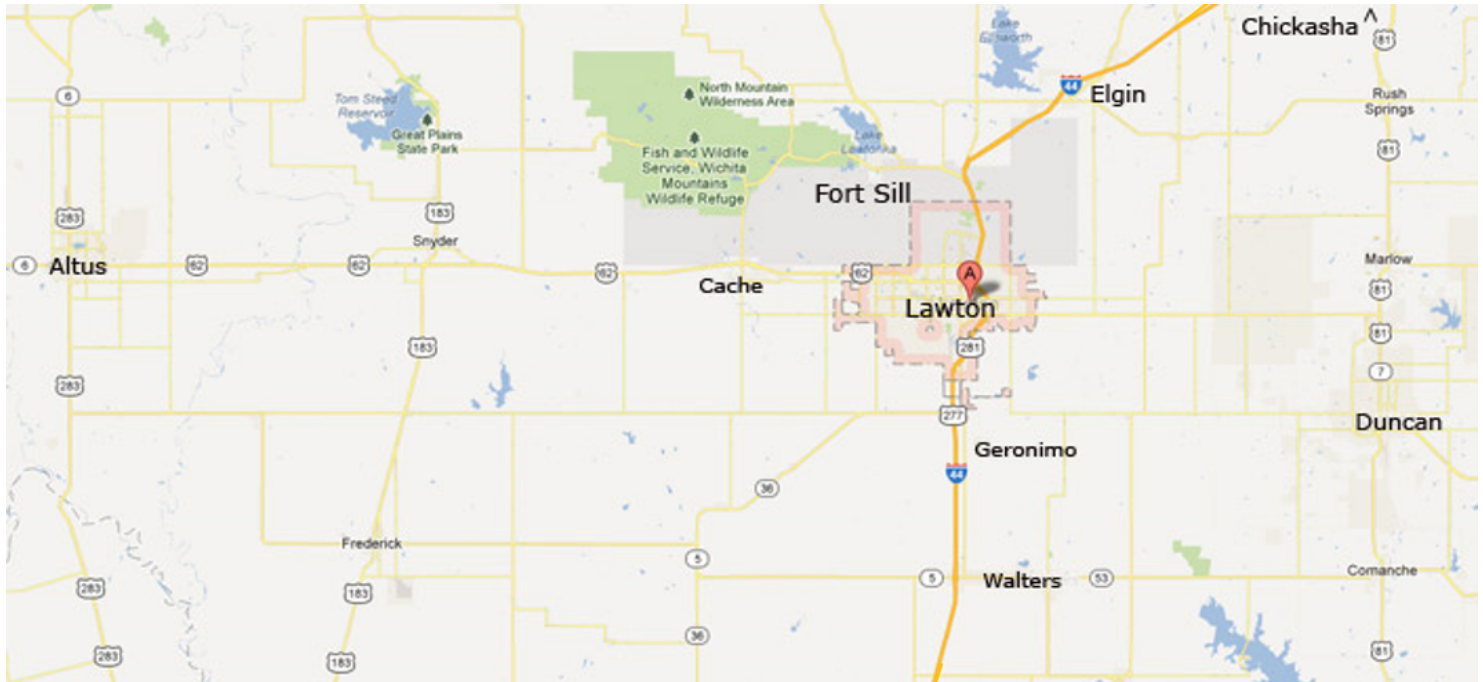
jwells@insightbrokers.com



**1313 SW Lee Blvd, Lawton, OK 73501**

Ste A - \$1,700.00/Mo, Ste B - \$1,700.00/Mo

RETAIL PROPERTY FOR LEASE



## REGION

Lawton has become the regional employment and retail center for southwest Oklahoma. Lawton supports a retail community of almost 300,000 people, all within a 45 minute drive. The greater Lawton region includes Wichita Falls, TX and the smaller towns of Cache, Duncan, Altus, Geronimo, Walters, Elgin, Chickasha, Marlow and Rush Springs, as well as the Fort Sill military installation and the Wichita Mountains Wildlife Refuge.

## LABOR FORCE

The greater Lawton area has gone through some healthy growth over the past 6 years that has resulted in a larger workforce. One of the strongest assets of the region is the population of skilled workers. Not only does the region recruit from its own residents in Lawton-Fort Sill, but also from the nearby communities and unincorporated areas of the 7 county area. On average, in a 45 minute radius from different points within the region, you can find an available workforce of approximately 350,000.

## FORT SILL

Fort Sill is one of the largest employers in Oklahoma with about 7,300 civilian employees, 9,000 soldiers stationed at the fort and another 5,500 soldiers rotating through for training. It has become a technology test and training hub of the United States. Fort Sill really is a twin city to Lawton right next door. The Army post has hotels, restaurants, day care centers, homes, shops – a city all by itself. But Fort Sill relies as much on Lawton as Lawton benefits from the \$2 billion economic impact generated by Fort Sill. Fort Sill is more than a great community partner and a major economic generator for the state of Oklahoma, it is also a workforce producer that delivers quality and technically experienced personnel when they leave the military.

## JASON WELLS

580.353.6100

[jwells@insightbrokers.com](mailto:jwells@insightbrokers.com)