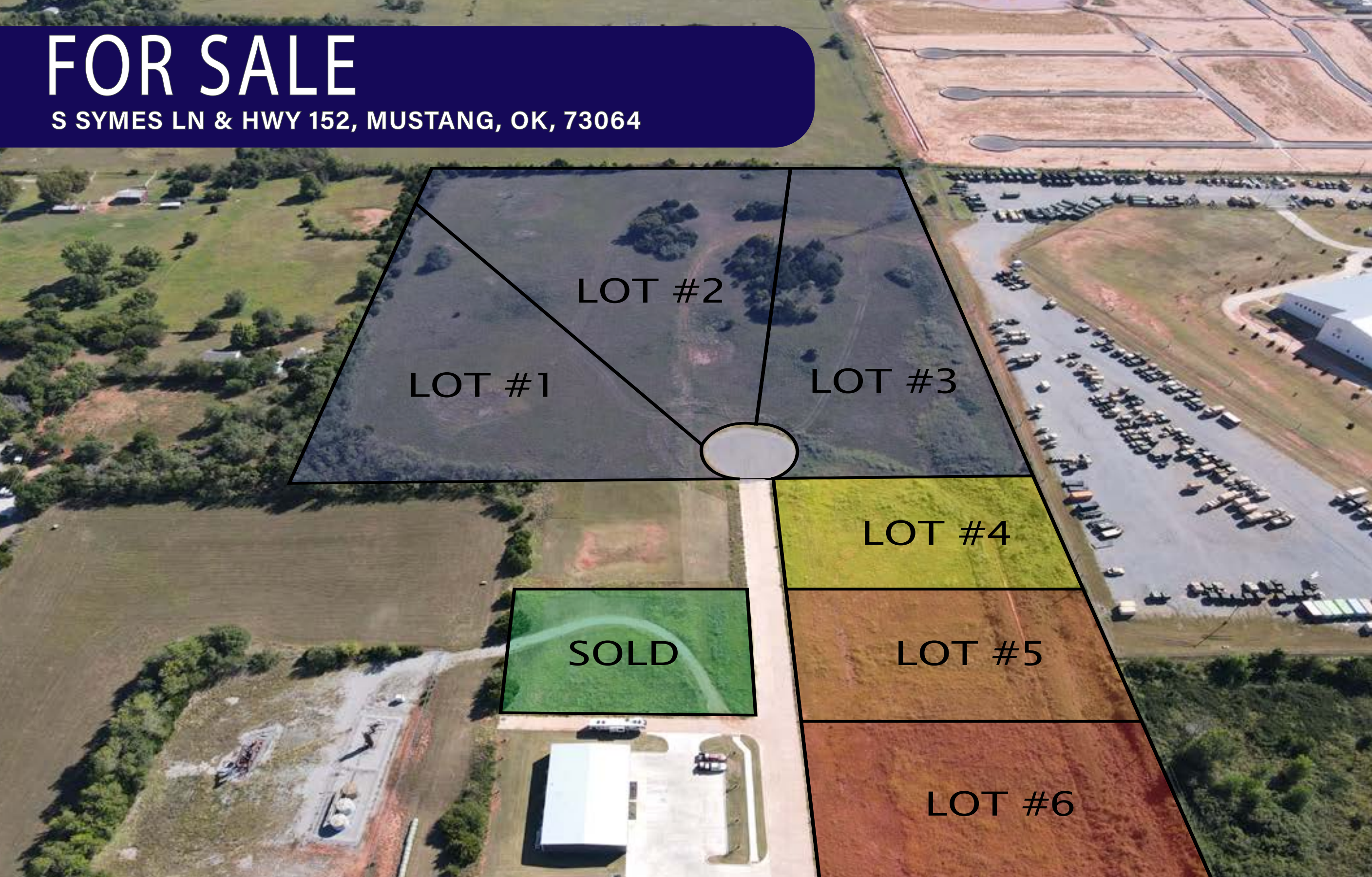


FOR SALE

S SYMES LN & HWY 152, MUSTANG, OK, 73064



HORIZON
COMMERCIAL REAL ESTATE

Nicole Mayes
Senior Vice President
405.209.3992

Spencer Bost
Associate
405.628.7481

www.horizoncreek.com



PROPERTY INFORMATION

1.05 - 19.04 ACRES AVAILABLE

| | |
|---------------|---------------------------|
| PROPERTY TYPE | VACANT LAND |
| PRICE PER SF | \$5.00 PSF |
| ZONING | COMM (C-5) + INDUST (I-2) |
| COUNTY | CANADIAN COUNTY |



SIX SEPARATE LOTS ARE NOW AVAILABLE IN THIS GROWING DEVELOPMENT DISTRICT!



EACH LOT HAS EASY ACCESS VIA S SYMES LN.



SITE IDEAL FOR STORAGE, DISTRIBUTION, STUDIOS, CONTRACTORS & MORE!



NEARBY PROVIDERS INCLUDE WALMART, LOWE'S, HAMPTON INN, ST ANTHONY HOSPITAL



CLOSE PROXIMITY TO I-40, I44, I240




LOCATED JUST 7 MILES WEST OF WILL ROGERS WORLD AIRPORT OFF OF HWY 152

ALTHOUGH THE INFORMATION HAS BEEN OBTAINED FROM TRUSTWORTHY SOURCES, HORIZON CRE MAKES NO GUARANTEES, ASSURANCES, OR WARRANTIES ABOUT THE COMPLETENESS OR ACCURACY OF THE DATA. THIS PROPERTY IS BEING PRESENTED WITH THE POSSIBILITY OF ERRORS AND OMISSIONS. MODIFICATIONS MAY OCCUR THAT ALTER THE FACTS OF THIS PRESENTATION WITHOUT NOTICE.

HORIZON
COMMERCIAL REAL ESTATE

Nicole Mayes | **Spencer Bost**
Senior Vice President | Associate
405.209.3992 | 405.628.7481
www.horizoncreek.com



15.89 Acres
(DIVISIBLE INTO 5 +/- ACRE LOTS)

1.05 Acres

SOLD

1.05 Acres

1.05 Acres

HORIZON
COMMERCIAL REAL ESTATE

Nicole Mayes
Senior Vice President
405.209.3992

Spencer Bost
Associate
405.628.7481

www.horizoncreek.com

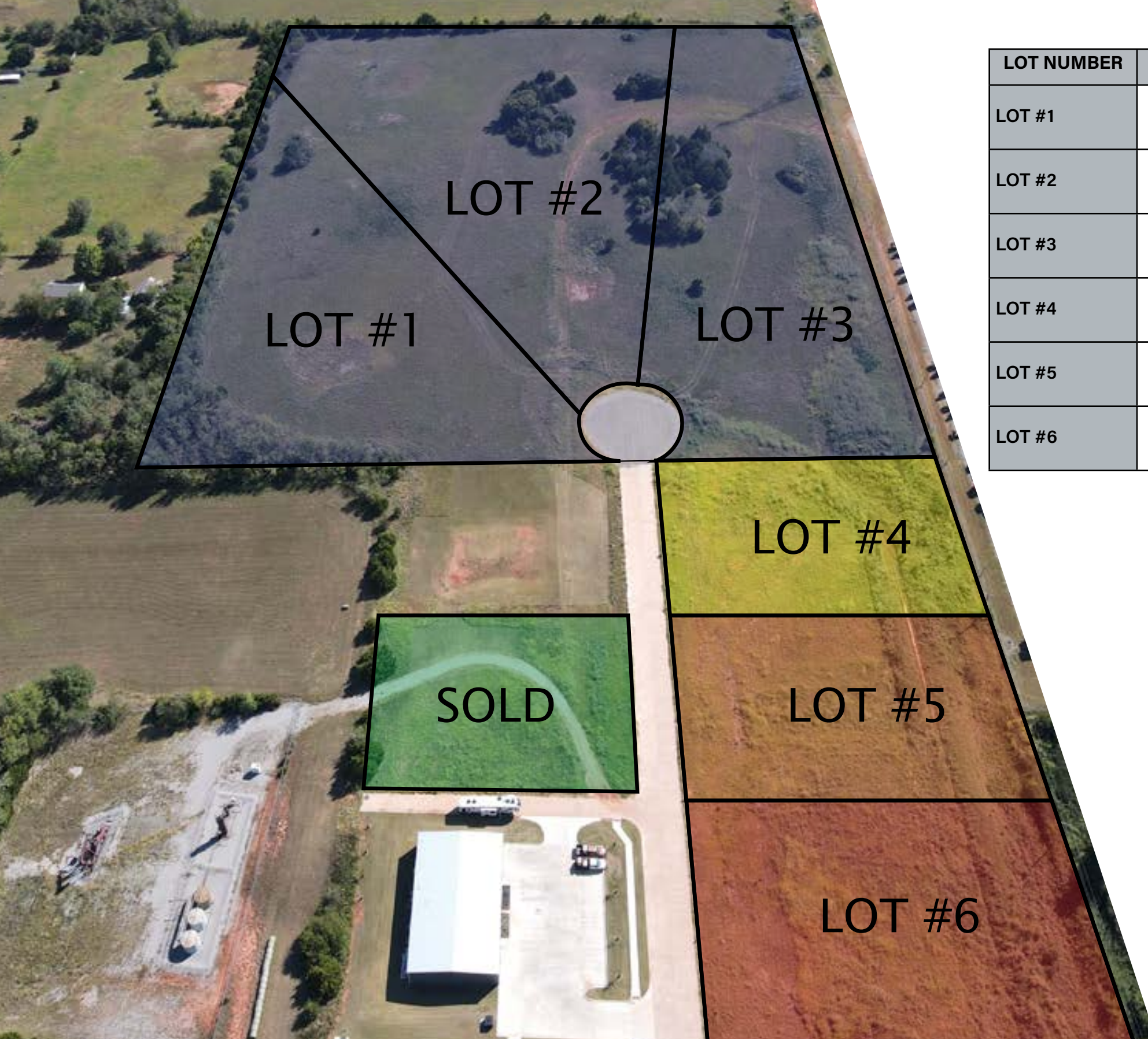


HORIZON
COMMERCIAL REAL ESTATE

Nicole Mayes
Senior Vice President
405.209.3992

Spencer Bost
Associate
405.628.7481

www.horizoncreek.com



| LOT NUMBER | ZONING | APPROX. SIZE | PRICE / SF |
|------------|---------------|----------------|-------------|
| LOT #1 | INDUST. (I-2) | 5.00 ACRES +/- | \$5.00 / SF |
| LOT #2 | INDUST. (I-2) | 5.00 ACRES +/- | \$5.00 / SF |
| LOT #3 | INDUST. (I-2) | 5.00 ACRES +/- | \$5.00 / SF |
| LOT #4 | COMM. (C-5) | 1.05 ACRES +/- | \$5.00 / SF |
| LOT #5 | COMM. (C-5) | 1.05 ACRES +/- | \$5.00 / SF |
| LOT #6 | COMM. (C-5) | 1.05 ACRES +/- | \$5.00 / SF |

