

# FOR LEASE | EVERGREEN PLAZA

10750-10778 SE Federal Hwy Hobe Sound, FL



1,300 +/- SF AVAILABLE  
OFFICE | RETAIL | MEDICAL



## PROPERTY FEATURES

- 8,000 sf retail/office plaza in desirable Hobe Sound, FL
- Located on Federal Highway, north of Bridge Road
- **Space Available:**
  - Suite 10778**
  - 1,300 +/- square feet available**
  - \$2,816.67 per mth (Base Rent & CAM)**
  - 8 Office, Reception area & One restroom**
- Full Office Layout - Ready to move in
- Excellent Monument signage on Federal Highway
- Plenty of Parking | 5.3 per 1,000 sf
- Great Tenant Mix: Edwards Jones, Financial Planning Consultants, Brightway Insurance, Anthony's Barber
- Call For Information @ 561.471.5353 Ext 108



Simplifying Real Estate

**STRATEGIC REALTY SERVICES, LLC**

**D. Glen Alexander**

561.471.5353

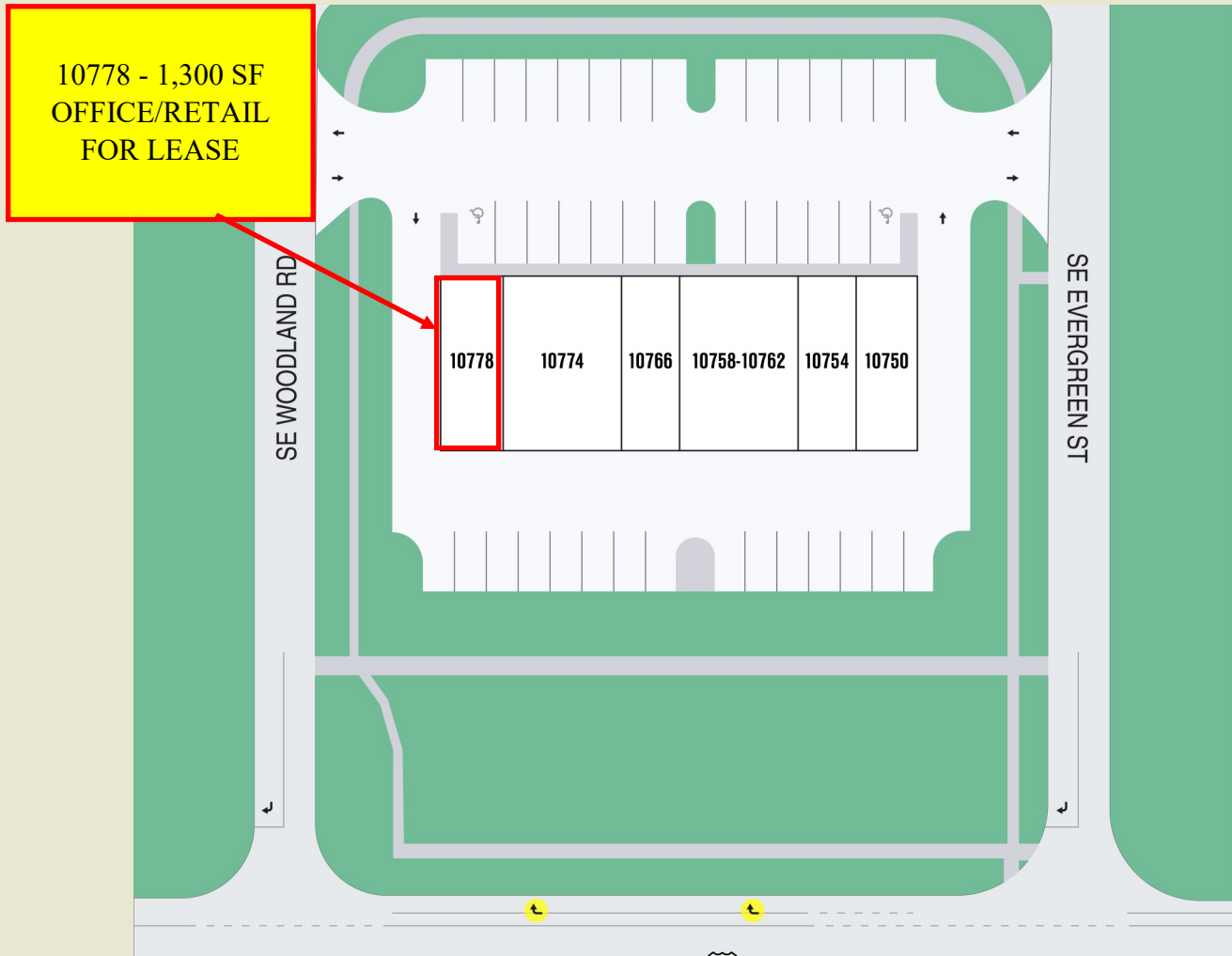
[galexander@strategicrealty.com](mailto:galexander@strategicrealty.com)

[www.strategicrealty.com](http://www.strategicrealty.com)



# FOR LEASE | EVERGREEN PLAZA

10770-10778 SE Federal Hwy Hobe Sound, FL



**OFFICE | RETAIL SPACE**  
**1,300 SF AVAILABLE**  
**BUILT OUT AS OFFICE**  
**PRIVATE OFFICES**

**Simplifying Real Estate**

**STRATEGIC REALTY SERVICES, LLC**

**D. Glen Alexander**

561.471.5353

[galexander@strategicrealty.com](mailto:galexander@strategicrealty.com)

[www.strategicrealty.com](http://www.strategicrealty.com)



# FOR LEASE | EVERGREEN PLAZA

10770-10778 SE Federal Hwy Hobe Sound FL



## Suite 10778

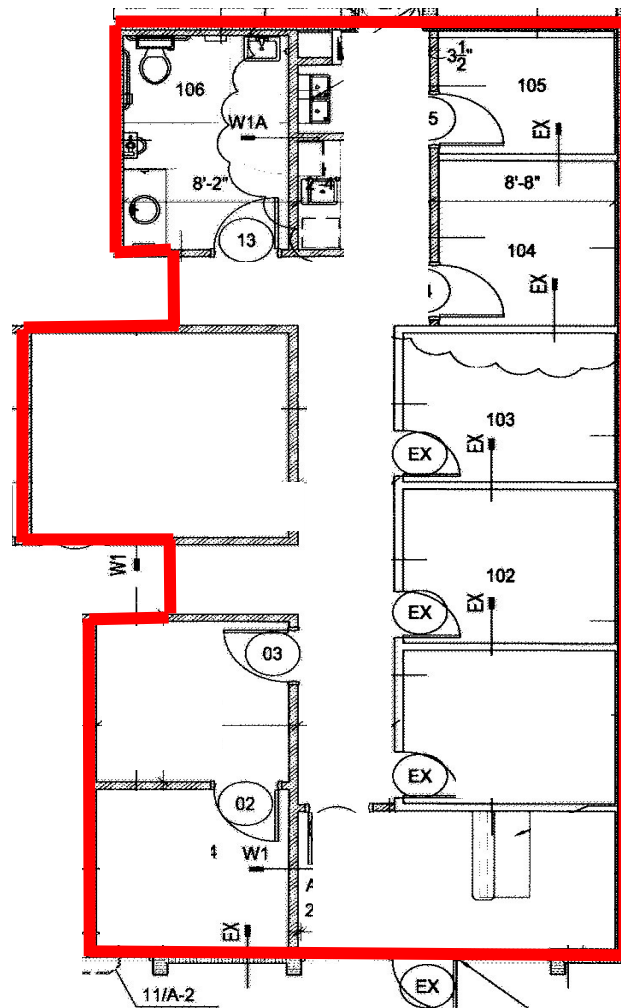
1,300 square feet

8 offices | Reception Area

1 restroom | Kitchen/Break Area

**MONUMENT SIGNAGE AVAILABLE**

**Available Now**



**FLOOR PLAN**

SCALE: 1/8" = 1'-0"





**FOR LEASE | EVERGREEN PLAZA**  
**10770-10778 SE Federal Hwy Hobe Sound FL**



**SUITE 10778 | 1,300 SF AVAILABLE**

