



2550 EASTPOINT PARKWAY

OFFICE SPACE FOR LEASE

NOW READY FOR TENANT FINISH



Up to 17,563 SF of Newly Constructed, Class A Office Space Available

Jeff Dreher, SIOR
Senior Vice President
+1 502 291 7560
jeff.dreher@cbre.com

Rick Ashton, CCIM
Senior Vice President
+1 502 939 5018
rick.ashton@cbre.com

CBRE

2550 Eastpoint Parkway

Louisville, KY 40223

THE BUILDING

The V-SOFT headquarters office building is a newly constructed, three-story, Class A development with approximately 48,000 square feet of space and 17,563 contiguous square feet available on the first and second floors.

A brand new asset, 2550 Eastpoint Parkway provides a 5/1,000 parking ratio and the opportunity for signage along I-265 for a large user. The available space is in shell condition providing a blank slate for a tenant to custom design a space for its needs.



EASTPOINT BUSINESS CENTER

Eastpoint Business Center is a 700-acre multi-use Class “A” business park located along I-265 in North-eastern Jefferson County. The development includes over 100 companies employing over 5,000 individuals. The park is home to medical, distribution, traditional office, retail, banking, and warehouse users. Some of the notable companies in the park include Kroger, Underwriters Safety and Claims, Baptist Health, Anderson Windows, Autotruck Financial Credit Union, McKesson, Toshiba Business Solutions, and Anthem Blue Cross Blue Shield.

For Lease



HIGHLIGHTS

- + Up to 17,563 SF of Class A Space Available
- + Shell Space Ready for Tenant Finish
- + Building Signage Opportunity for Large User
- + Competitive Rental Rates
- + Common Building Conference Room
- + Common Building Fitness Center
- + Close Proximity to Area Retail, Hotels, Restaurants and Services



2550 Eastpoint Parkway

Louisville, KY 40223

LOCATION

The surrounding area provides the ideal backdrop for companies looking for successful corporate neighbors, nearby amenities and accessibility to the Greater Louisville region and Southern Indiana via the Lewis and Clark bridge. The building sits in between the Old LaGrange Rd and Old Henry Rd exits of I-265 and is in close proximity to an abundance of amenities, including dining, hotels and retail.

● Anthem Blue Cross
Blue Shield

● Baptist Eastpoint

● U of L Health

● Galen College of
Nursing

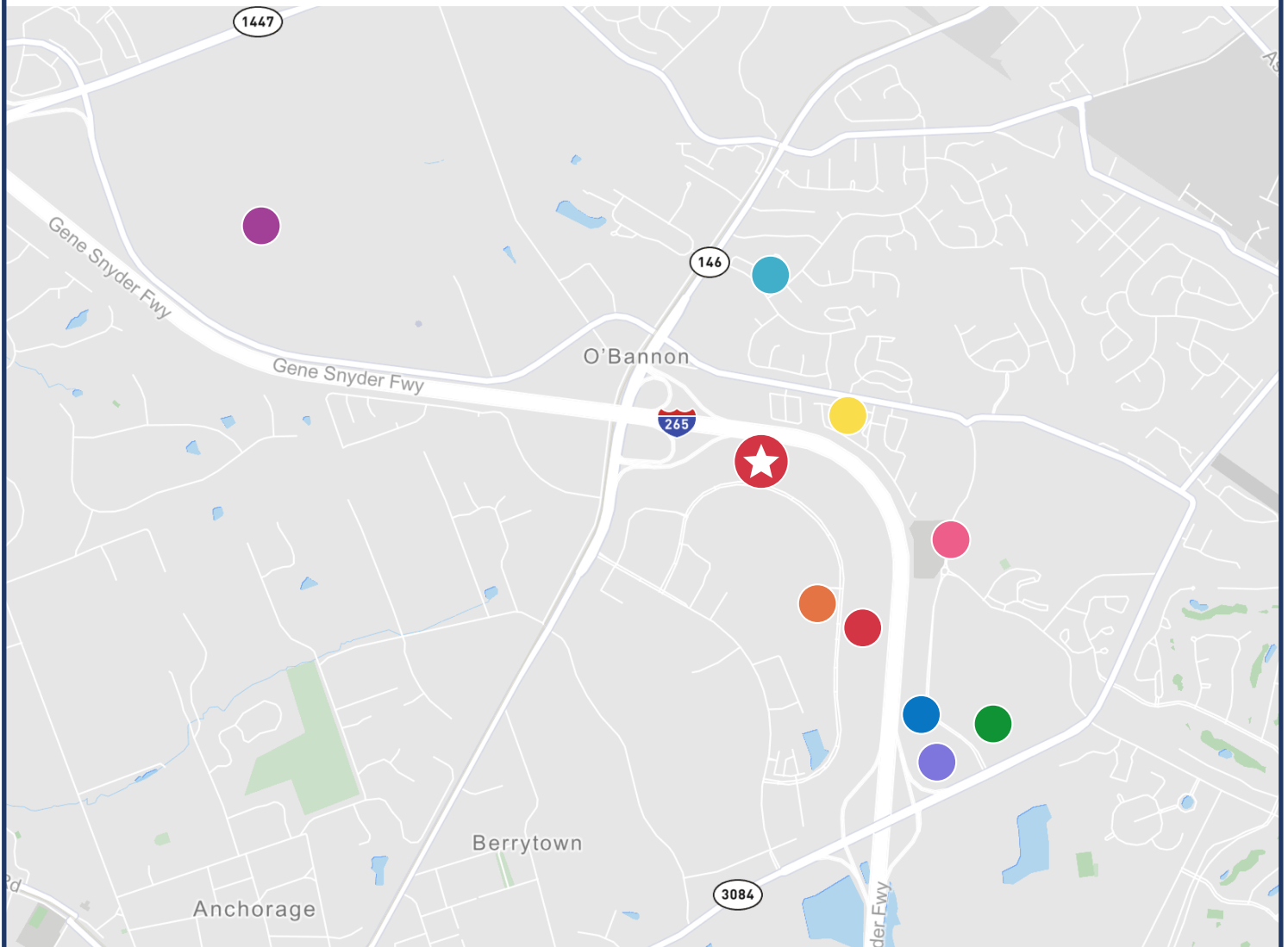
● Kroger

● Residence Inn

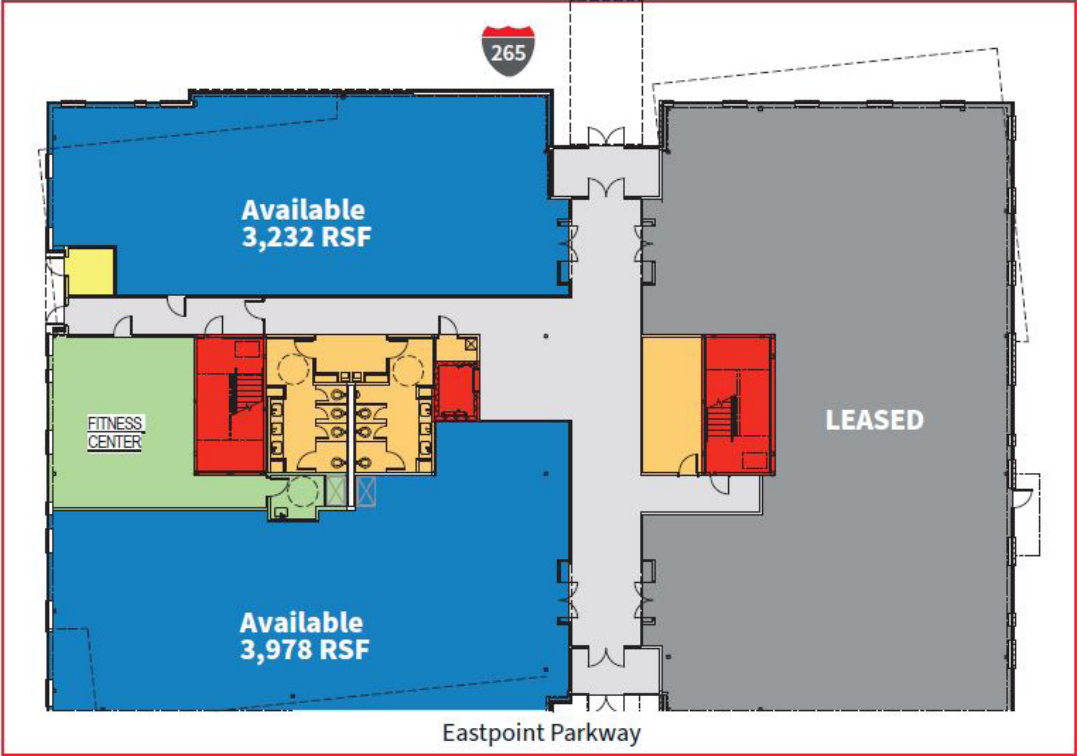
● The Paddock at
Eastpoint

● Publix

● Ford



FIRST FLOOR



SECOND FLOOR



2550 Eastpoint Parkway
Louisville, KY 40223

Upscale Entry



Class A Lobby Finishes



Fitness Center



Upscale Restrooms



Available Suites



Common Conference Center



2550 Eastpoint Parkway
Louisville, KY 40223

For Lease



Contact Us

Jeff Dreher, SIOR
Senior Vice President
+1 502 291 7560
jeff.dreher@cbre.com

Rick Ashton, CCIM
Senior Vice President
+1 502 939 5018
rick.ashton@cbre.com

© 2024 CBRE, Inc. All rights reserved. This information has been obtained from sources believed reliable, but has not been verified for accuracy or completeness. You should conduct a careful, independent investigation of the property and verify all information. Any reliance on this information is solely at your own risk. CBRE and the CBRE logo are service marks of CBRE, Inc. All other marks displayed on this document are the property of their respective owners, and the use of such logos does not imply any affiliation with or endorsement of CBRE. Photos herein are the property of their respective owners. Use of these images without the express written consent of the owner is prohibited.

www.cbre.com/louisville

CBRE