

[CLICK FOR
3D TOUR](#)



**DOWNTOWN
HOUSTON**



Available
713 503 1027

MURPHY ST



**FOR SALE
OR LEASE**

6015 Murphy St. | Houston, TX
45,715 SF Distribution Building

PROPERTY INFORMATION:

- \$0.53 PSF Base Rate | \$0.15 PSF Opex
- 45,715-sf Distribution Building
- 43,925-sf Warehouse (14' Clear)
- 1,790-sf Office (Brand New)
- Nine (9) Dock High Doors
- One (1) Drive-In Ramp
- New Interior Makeready and Whitebox
- Improved Parking Lot and Truck Court
- New LED Lighting / Flood Lights
- New Roofs (2021 / 2024)
- Fully Sprinklered
- Complete Exterior Restoration
- Power: 400 amps, 3 Phase



MARKETED BY:



Will Clay
713.503.1027
will.clay@jll.com

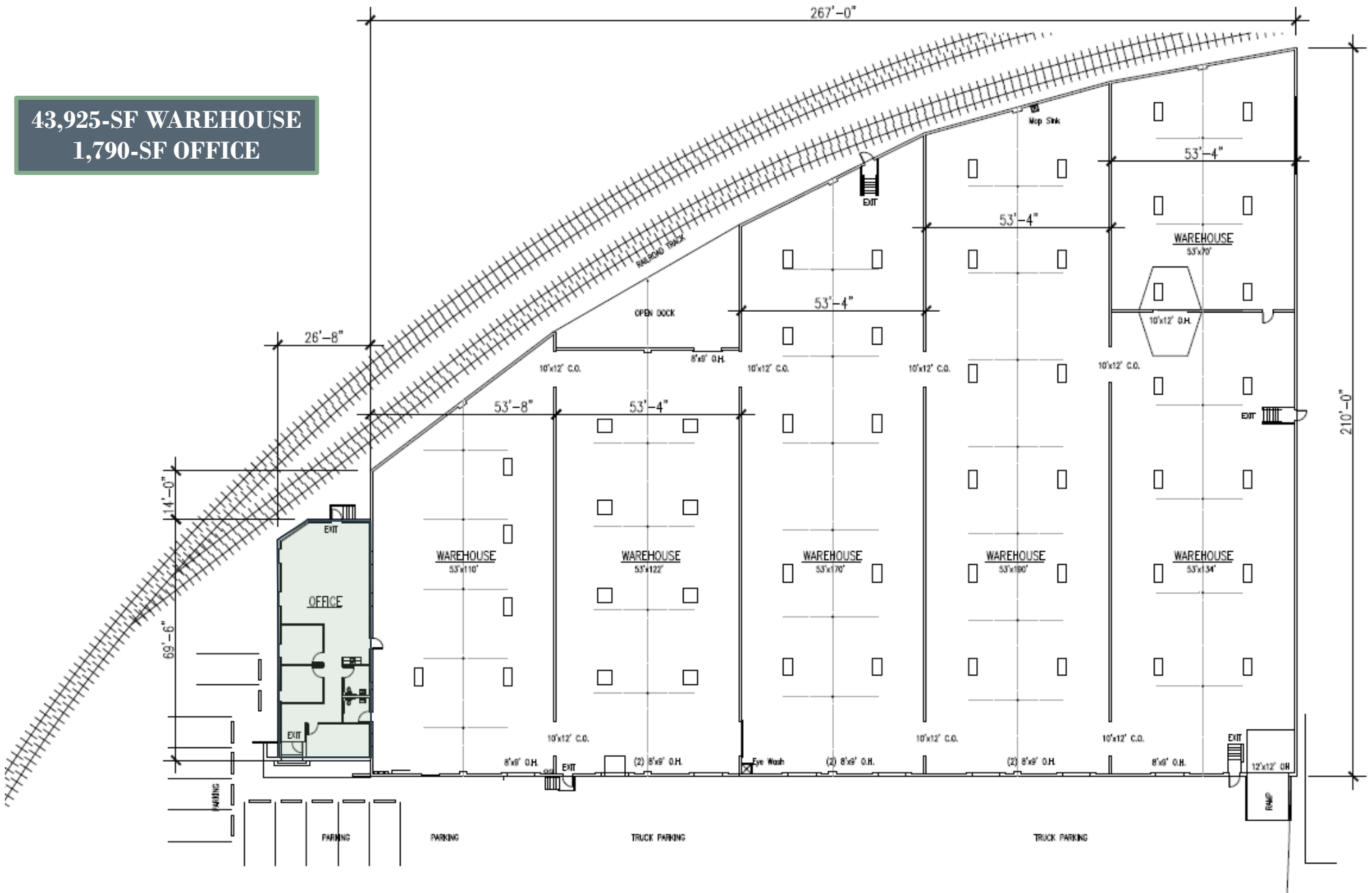
Mark Nicholas
713.805.6330
mark.nicholas@jll.com



FOR SALE OR LEASE

6015 Murphy St. | Houston, TX
45,715 SF Distribution Building

43,925-SF WAREHOUSE
1,790-SF OFFICE



FOR SALE OR LEASE

6015 Murphy St. | Houston, TX
45,715 SF Distribution Building



**DOWNTOWN
HOUSTON**



**NEW ASPHALT
AND STRIPING**

NEW OFFICE ROOF (2024)

NEW WAREHOUSE ROOF (2021)

NEW LANDSCAPING

TRUCK COURT IMPROVEMENTS

NEW EXTERIOR FACADE

MURPHY ST



FOR SALE OR LEASE

6015 Murphy St. | Houston, TX
45,715 SF Distribution Building



**NEW LED LIGHTING
(2 PER BAY)**

**NEW
SKYLIGHTS**

**NEW COLUMN
PAINTING**

**NEW WAREHOUSE
PAINT**

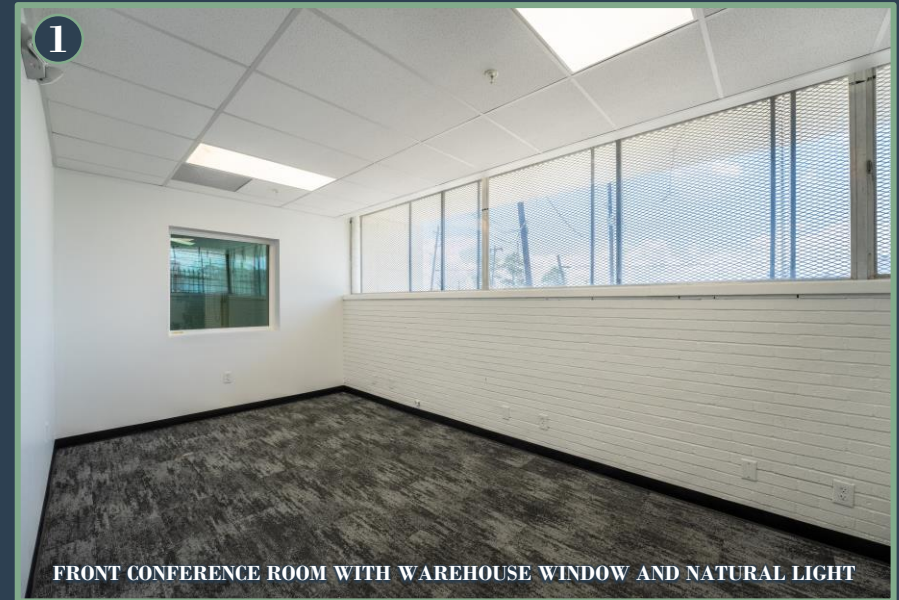
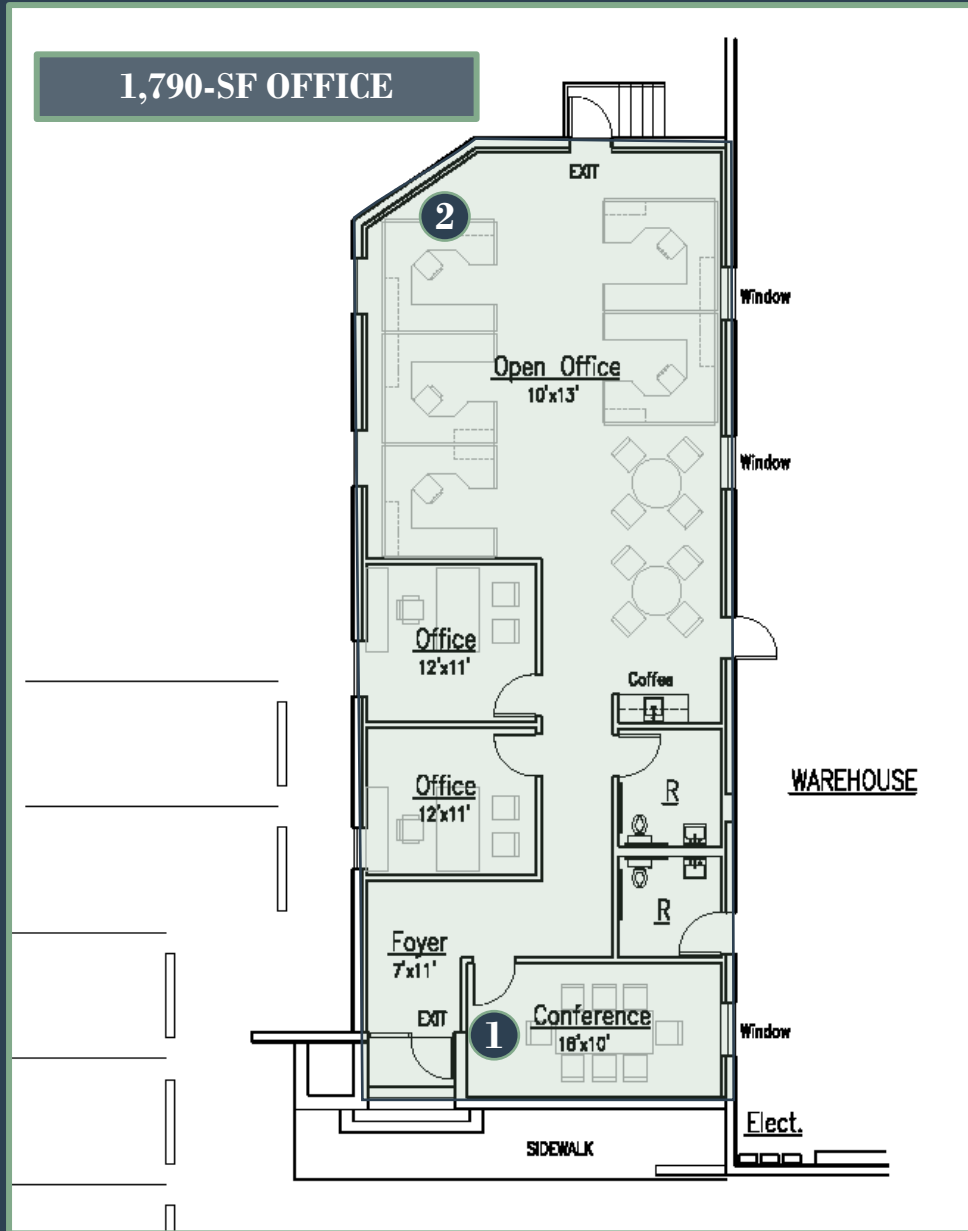
**POLISHED
CONCRETE FLOOR**



FOR SALE OR LEASE

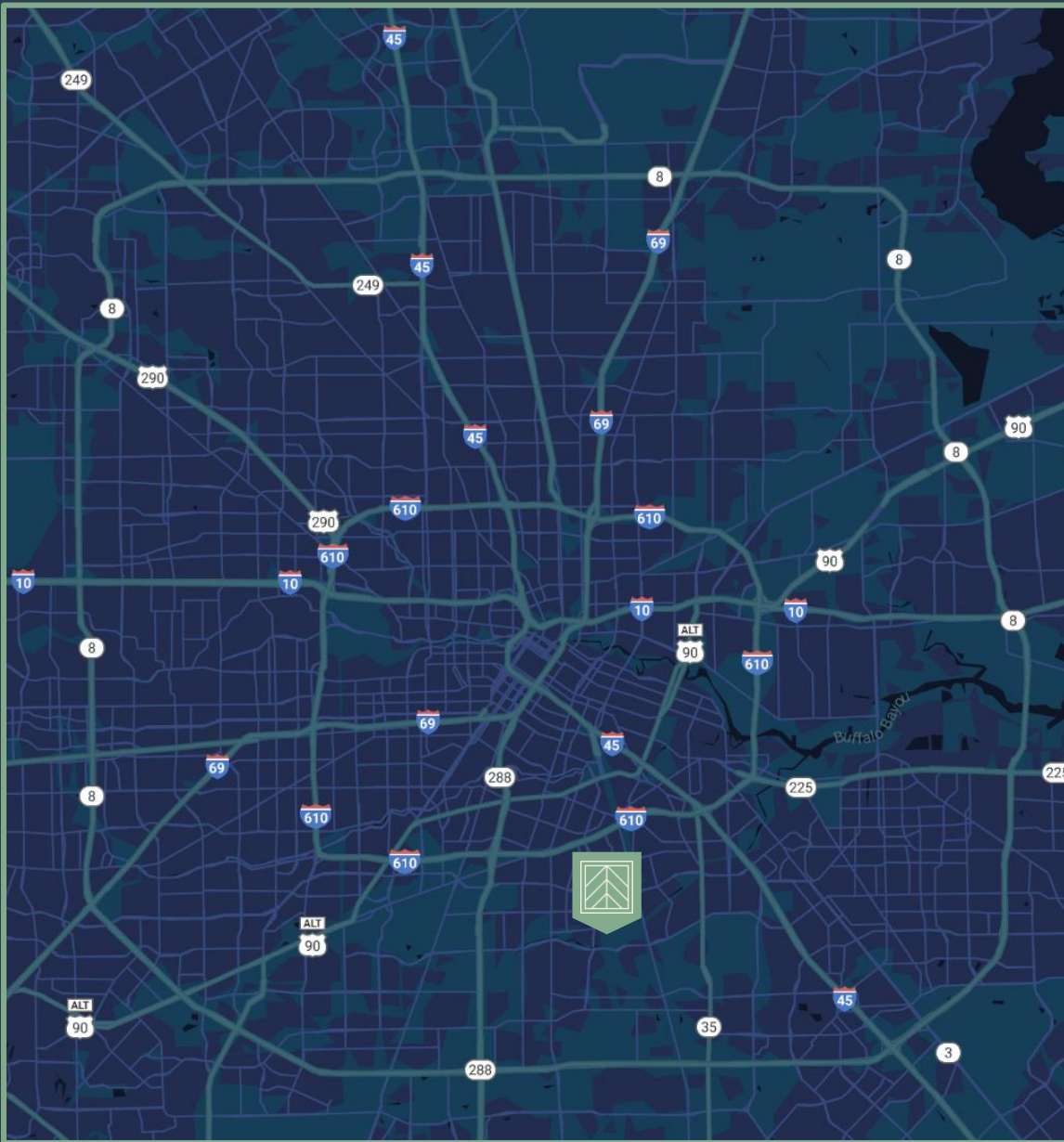
6015 Murphy St. | Houston, TX
45,715 SF Distribution Building

*Click [HERE](#) for Virtual Tour of Office and Warehouse Space



FOR SALE OR LEASE

6015 Murphy St. | Houston, TX
45,715 SF Distribution Building



AVAILABLE IMMEDIATELY!

- \$0.53 Base Rate | \$0.15 PSF Opex
- 43,925-sf Warehouse
- 1,790-sf Office (Brand New)
- New Interior Makeready
- Nine (9) Dock High Doors
- One (1) Drive-In Door

MARKETED BY:



Will Clay
713.503.1027
will.clay@jll.com

Mark Nicholas
713.805.6330
mark.nicholas@jll.com



FOR SALE OR LEASE

6015 Murphy St. | Houston, TX
45,715 SF Distribution Building