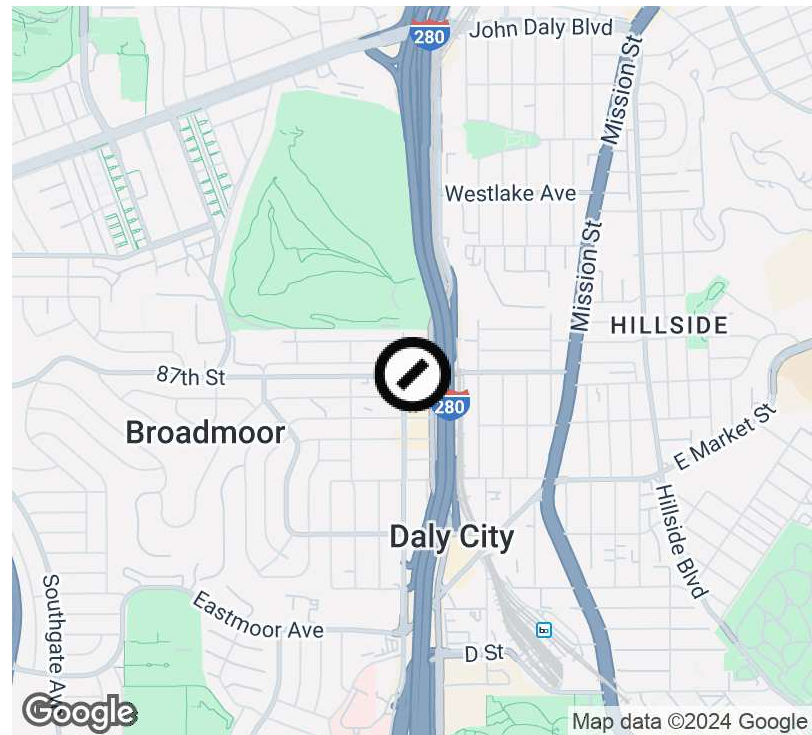


Cedar Hill Offices - 295 89th Street, Daly City



Offering Summary

Lease Rate:	\$2.85 SF/month (Full Service)
Building Size:	24,072 SF
Available SF:	447 - 6,701 SF
Lot Size:	11,326 SF
Year Built:	1985

Currently Available

- Suite 103 @ 1,355 SF. Available now. (Direct exterior access)
- Suite 104 @ 800 SF. Available Jan. 1st, 2025. (Can combine with Suite 105)
- Suite 105 @ 1,577 SF. Available Jan. 1st, 2025. (Can combine with Suite 104)
- Suite 304/305 @ 1,027 - 2,522 SFD. Available now. (Multiple options to divide)
- Suite 309 @ 447 SF. Available now.

- Recent common area upgrades.
- Convenient freeway access.
- Proximity to local government.
- Conveniently located between San Francisco & the Peninsula.
- Secure parking.

David Bell
Junior Vice President

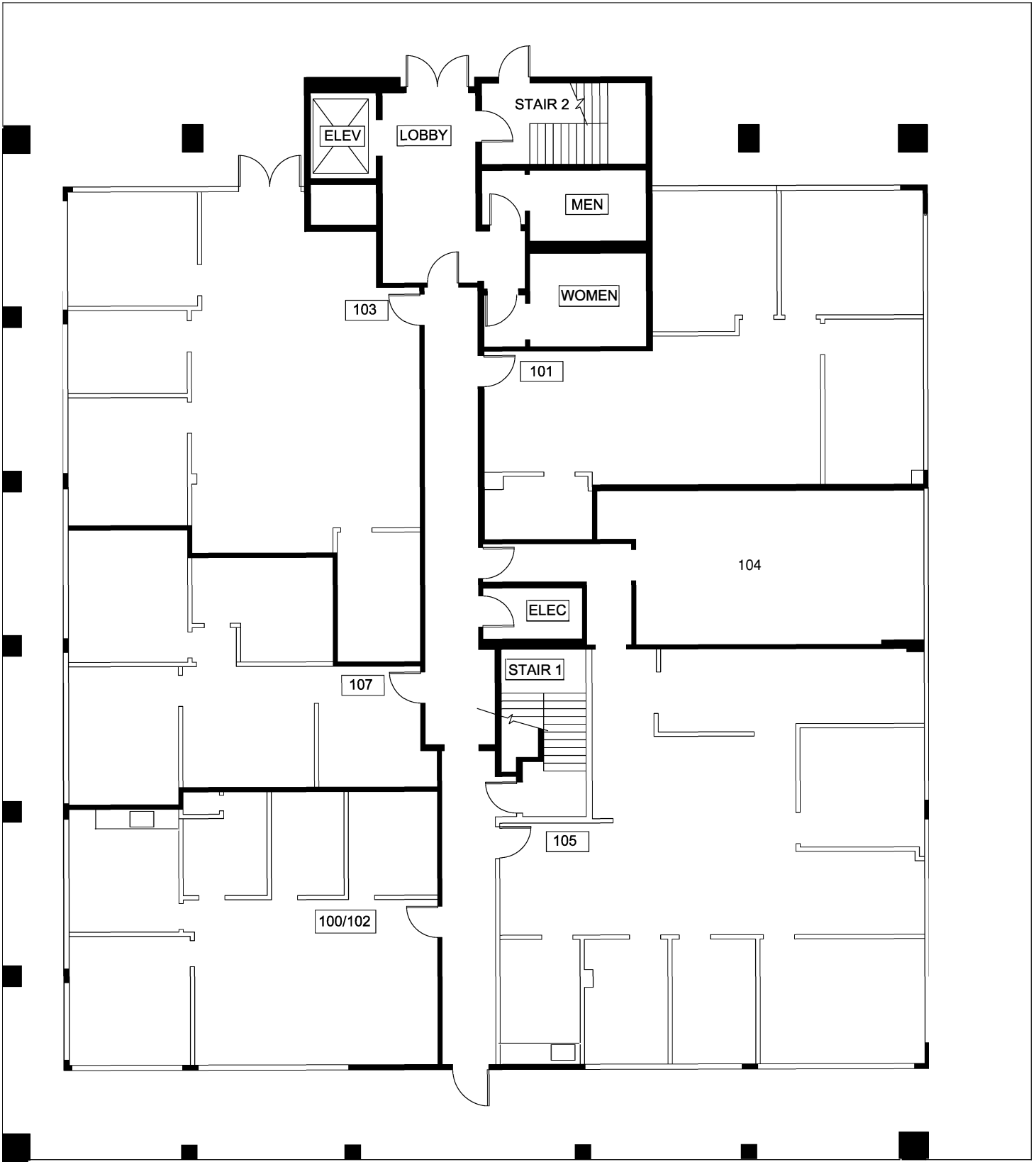
415.307.8056
david.bell@compass.com
CalDRE #01862467

Gary Barboro
Senior Vice President

415.867.6512
gary.barboro@compass.com
CalDRE #01125826

Jack Silva
Senior Vice President

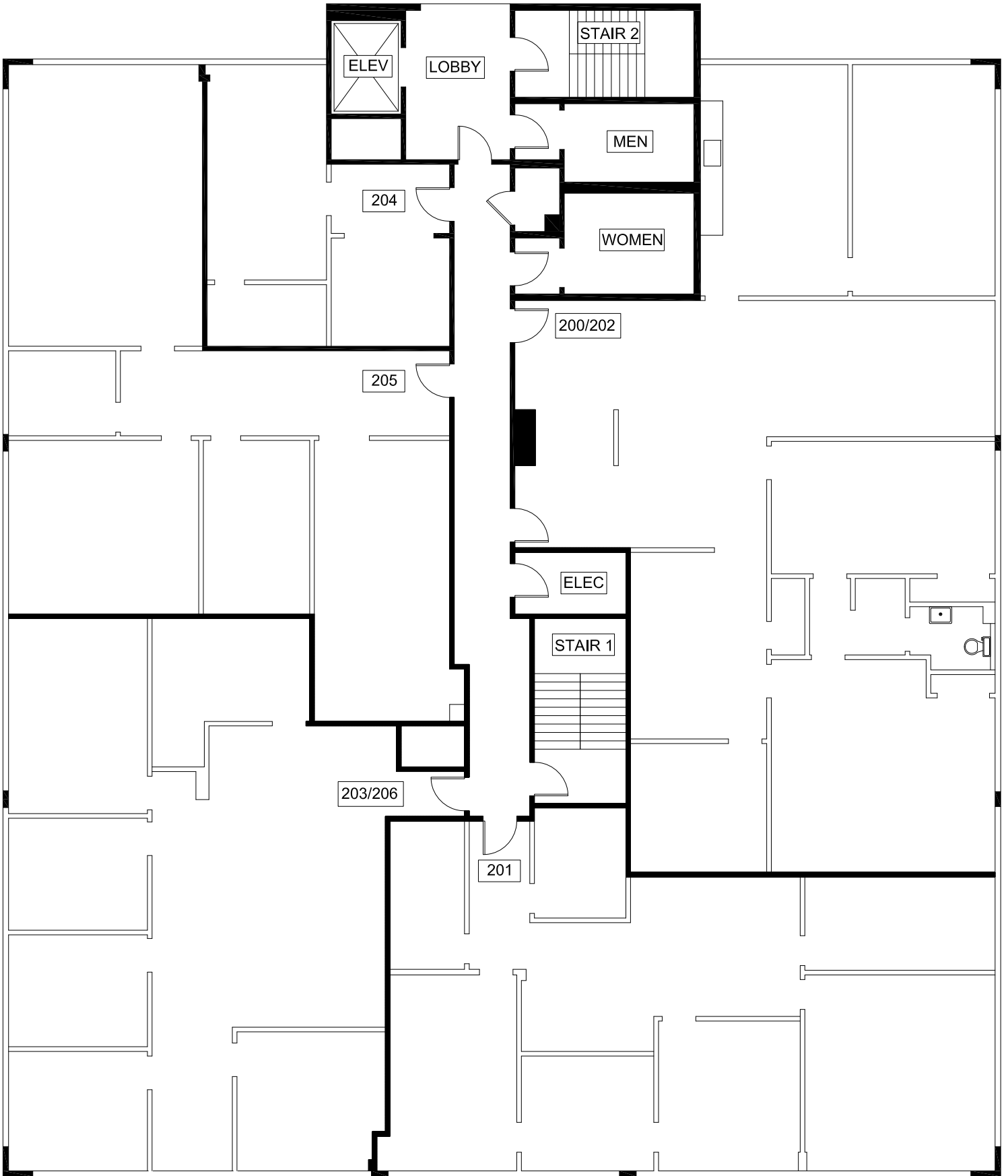
415.308.2966
jack.silva@compass.com
CalDRE #00863003



FIRST FLOOR

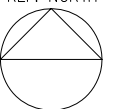
REF. NORTH

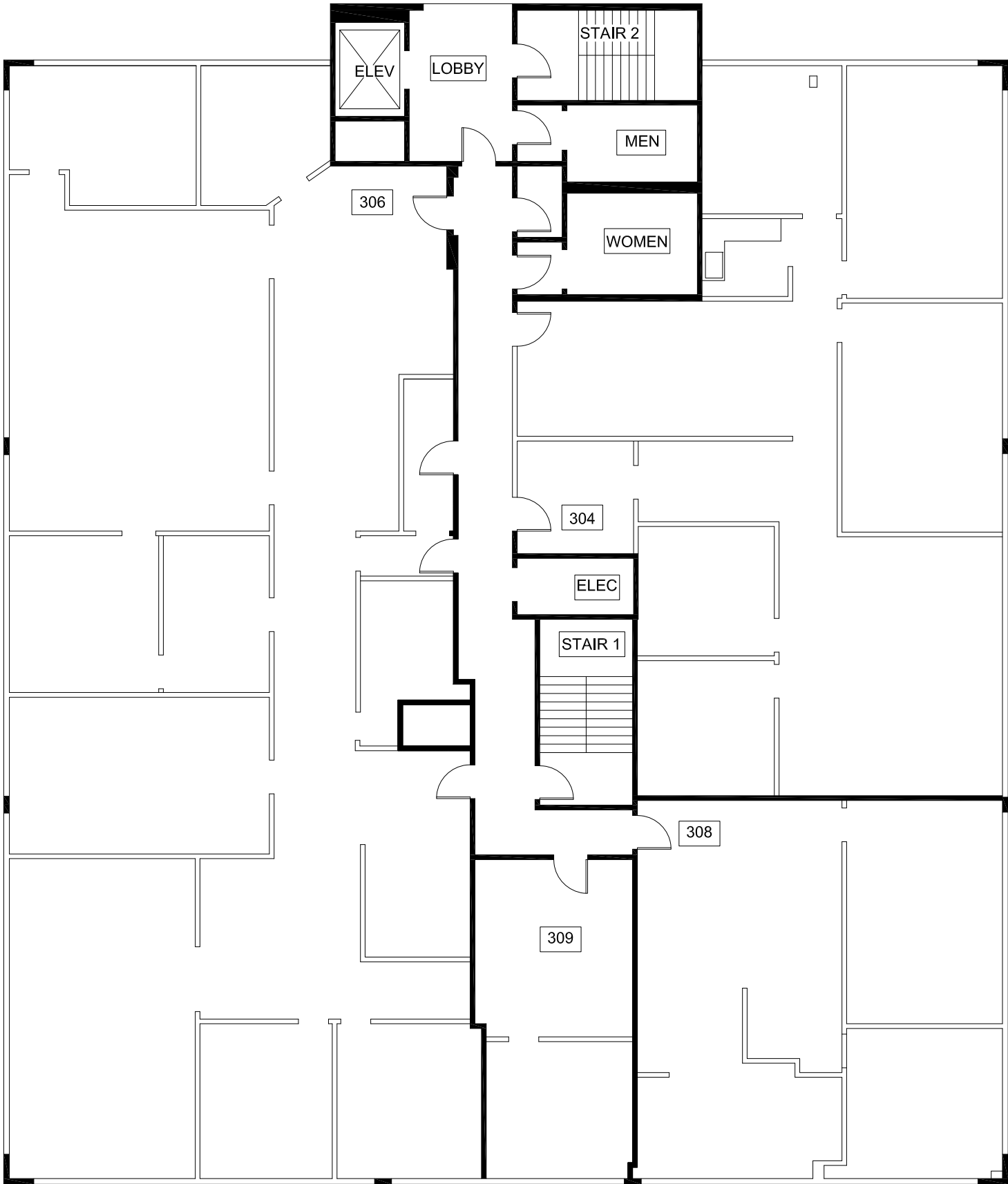




SECOND FLOOR

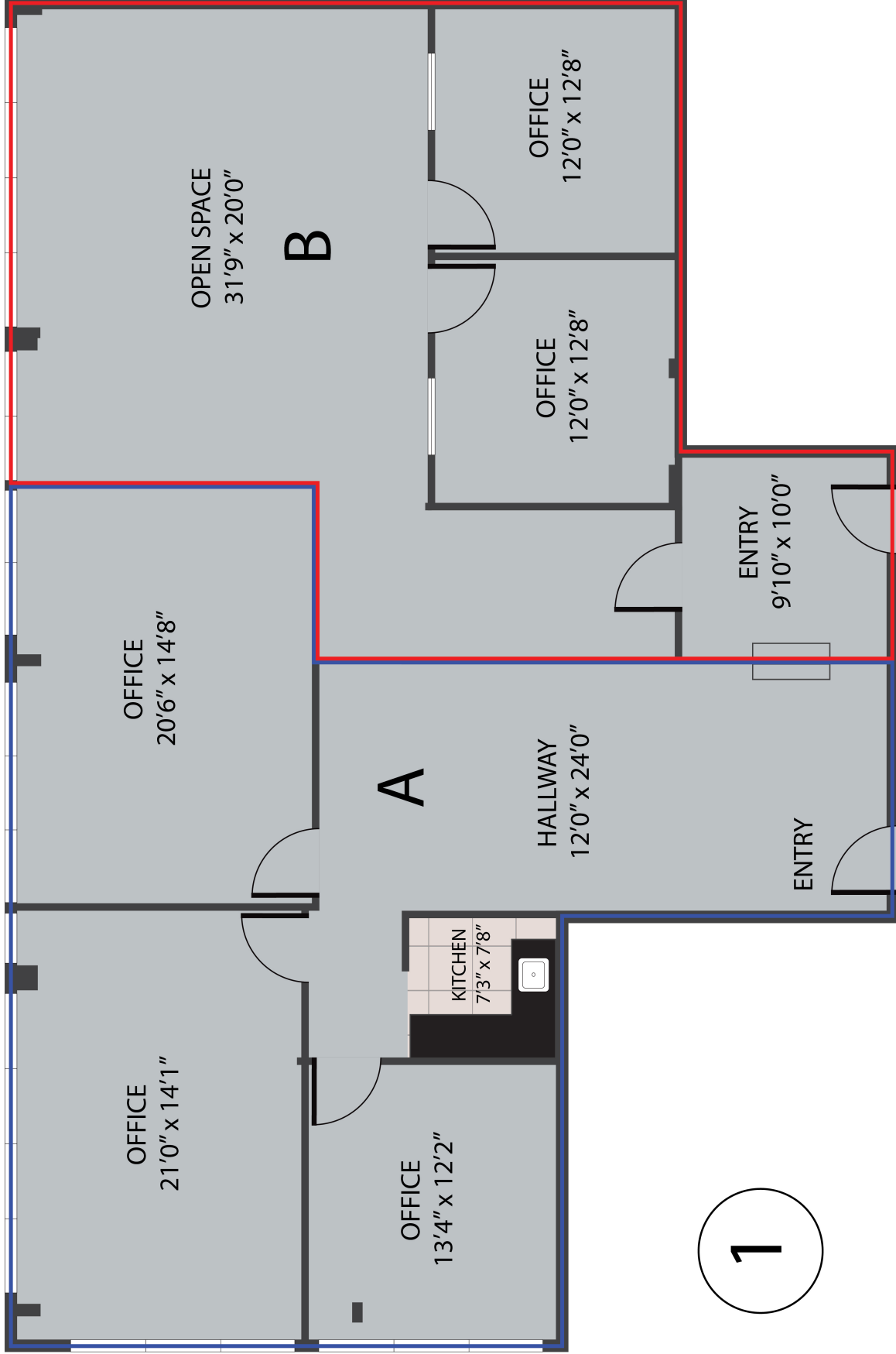
REF. NORTH





THIRD FLOOR

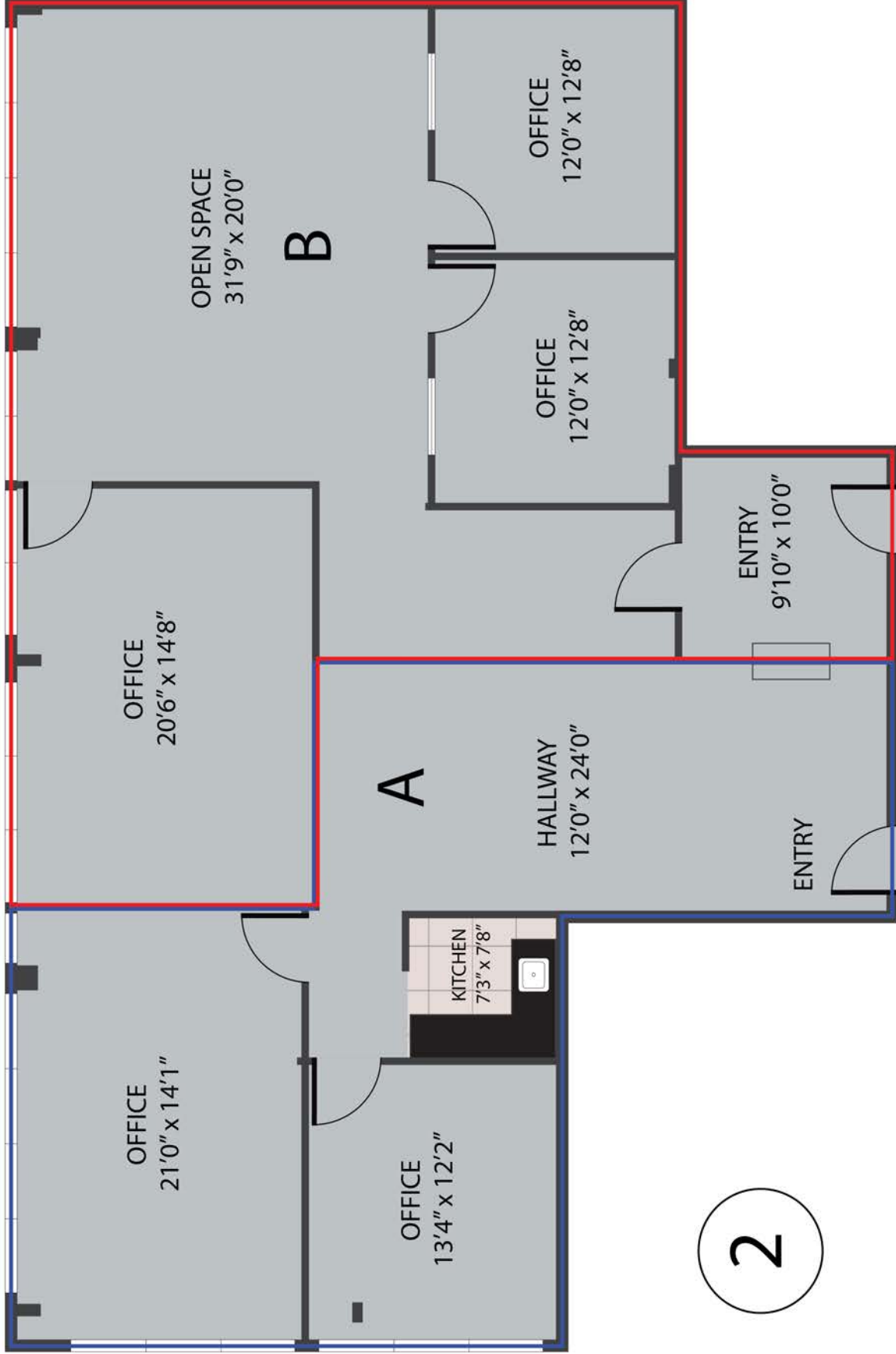




A : 1,376 RSF
 B : 1,146 RSF
 TOTAL : 2,522 RSF

289 89th Street, Suite 304/5 Daly City, CA, 94015
 TOTAL APPROX. FLOOR AREA 2,522 SQ.FT

Whilst every attempt has been made to ensure the accuracy of the floor plan contained here, measurements of doors, windows, rooms and any other items are approximate and no responsibility is taken for any error, omission, or misstatement. This plan is for illustrative purposes only and should be used as such by any prospective purchaser.



A : 1,027 RSF
 B : 1,495 RSF
 TOTAL : 2,522 RSF

289 89th Street, Suite 304/5 Daly City, CA, 94015
 TOTAL APPROX. FLOOR AREA 2,522 SQ.FT

Whilst every attempt has been made to ensure the accuracy of the floor plan contained here, measurements of doors, windows, rooms and any other items are approximate and no responsibility is taken for any error, omission, or misstatement. This plan is for illustrative purposes only and should be used as such by any prospective purchaser.



David Bell
Junior Vice President

415.307.8056
david.bell@compass.com
CalDRE #01862467

Gary Barboro
Senior Vice President

415.867.6512
gary.barboro@compass.com
CalDRE #01125826

Jack Silva
Senior Vice President

415.308.2966
jack.silva@compass.com
CalDRE #00863003



David Bell
Junior Vice President

415.307.8056
david.bell@compass.com
CalDRE #01862467

Gary Barboro
Senior Vice President

415.867.6512
gary.barboro@compass.com
CalDRE #01125826

Jack Silva
Senior Vice President

415.308.2966
jack.silva@compass.com
CalDRE #00863003