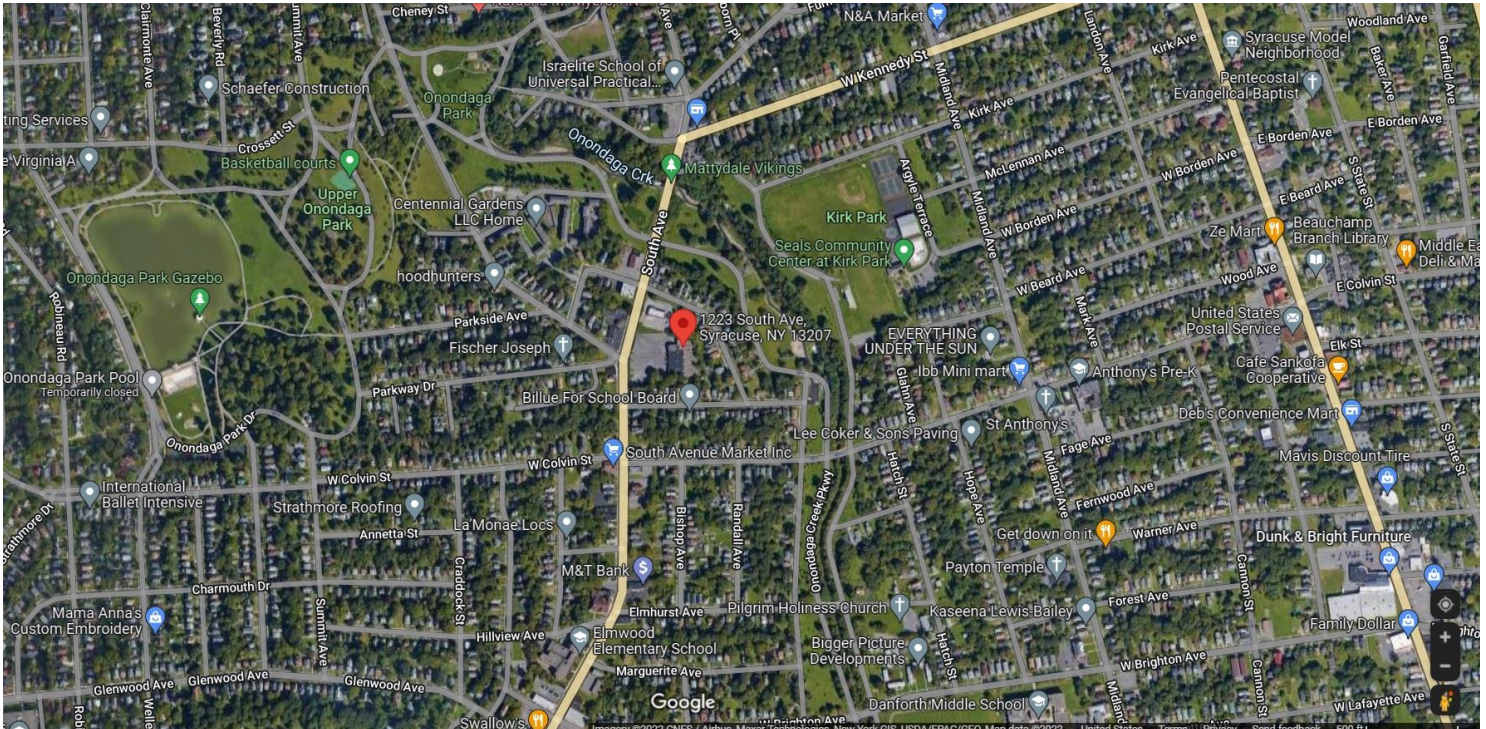


South Avenue Plaza 1223 South Avenue Syracuse, NY 13207

Key Facts:

- Total available square footage: 26,000 sf
- Asking rent: Please inquire
- Co-tenant: Full Building Available
- Comments: Ample parking. Excellent Access right off of Interstate 81. 1 mile to Syracuse University campus.

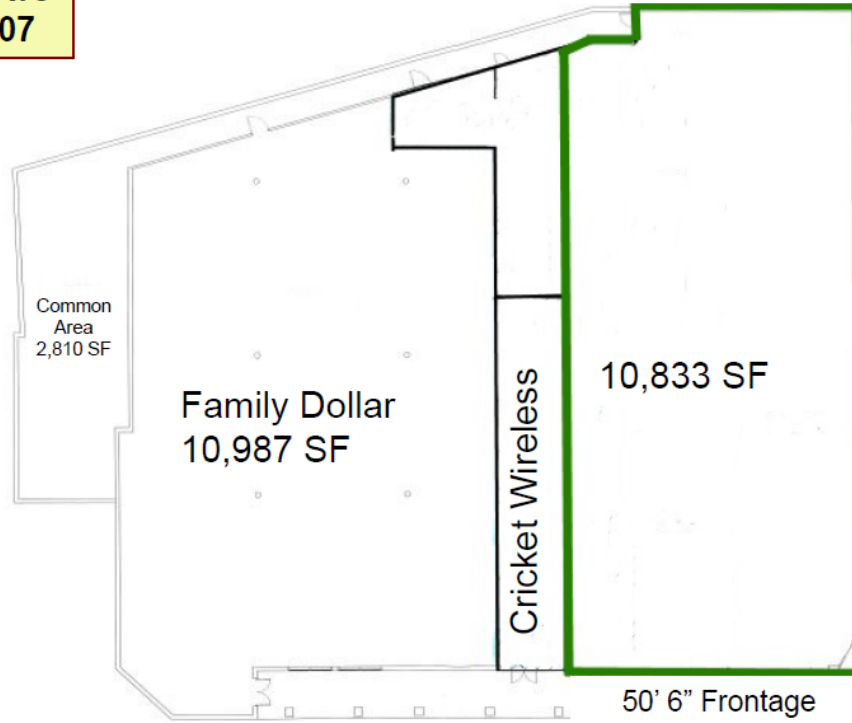


A Boutique Tenant Representation Firm

27 W. 20th Street, Suite 302, New York, NY 11210, T: 718.972.1808,
www.gluckrealty.com

**South Ave Plaza
1223-1301 South Ave
Syracuse, NY 13207**

Floor Plan
Spaces 1231A



A Boutique Tenant Representation Firm

27 W. 20th Street, Suite 302, New York, NY 11210, T: 718.972.1808,
www.gluckrealty.com



A Boutique Tenant Representation Firm

27 W. 20th Street, Suite 302, New York, NY 11210, T: 718.972.1808,
www.gluckrealty.com