

**320 BOLTON STREET
MARLBOROUGH, MA**

**AVAILABLE FOR LEASE
NEW OWNERSHIP**

Fazza Medical Center



3-Story, 14,000 SF Medical Building

320 Bolton Street is a first-class medical building with on-site management conveniently located on Route 85, just minutes from Interstate 495 and Route 20. These are move in ready suites.

AVAILABLE: 1st Floor 1,273 SF
2nd Floor 1,810 SF & 1,012 SF

BUILDING SIZE: 14, 818 SF

LOT SIZE: 1.79 Acres

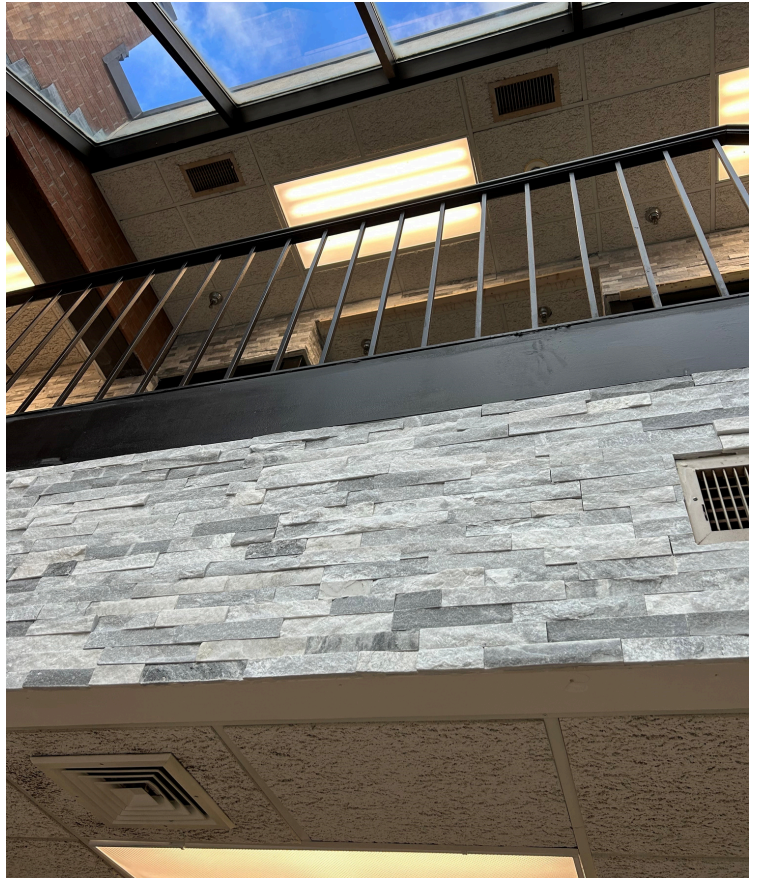
PARKING: 3.5/1000

LEASE RATE: \$22.50/SF NNN

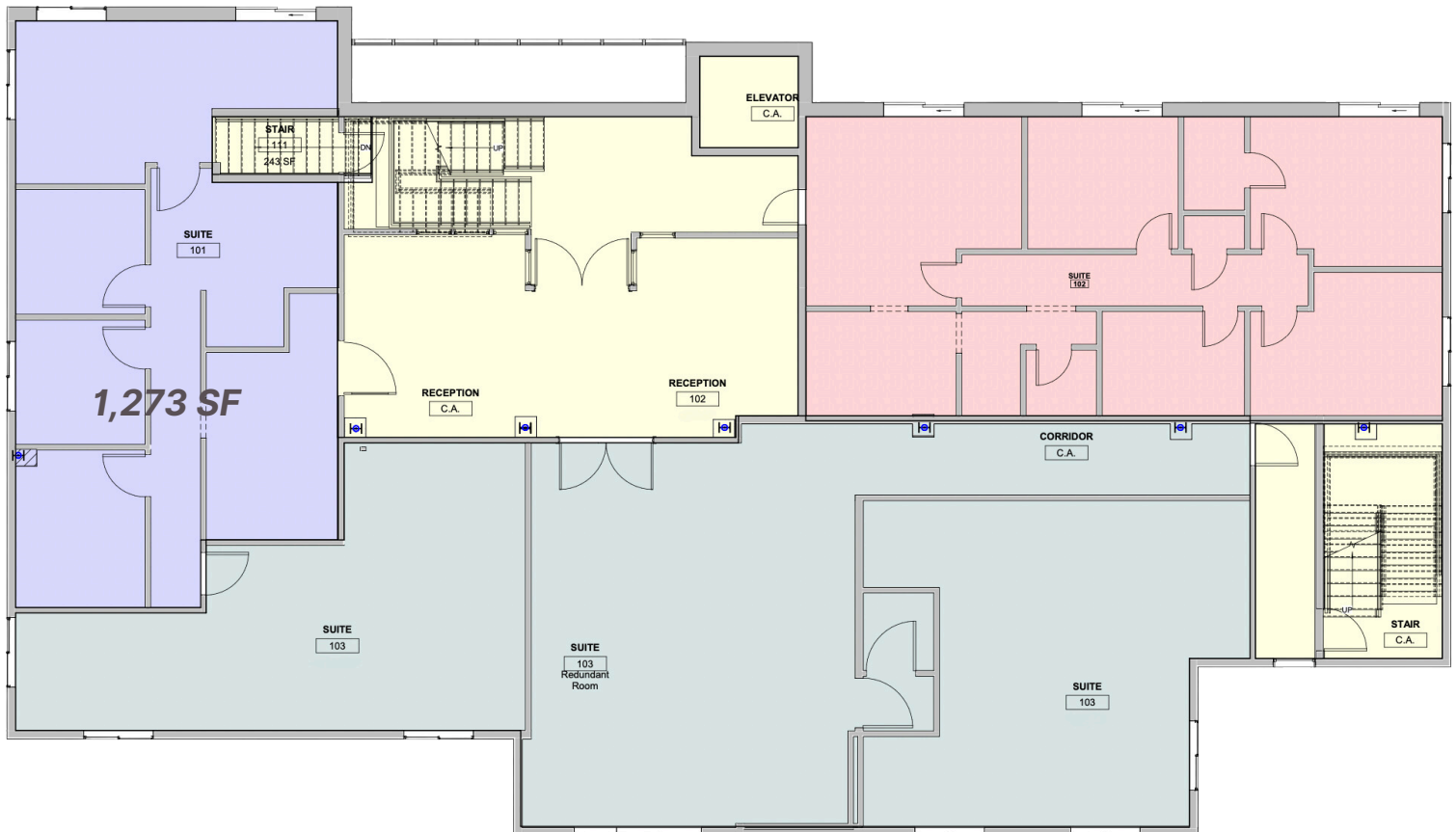
- Undergoing Lobby Renovations
- Undergoing Exterior Renovation
- Signage Opportunity
- Move-in Ready Suites Available
- On-site Management

R.W. HOLMES
COMMERCIAL REAL ESTATE

FOR MORE INFORMATION PLEASE CONTACT: CRAIG JOHNSTON
CJOHNSTON@RWHOLMES.COM
(508)651-9022

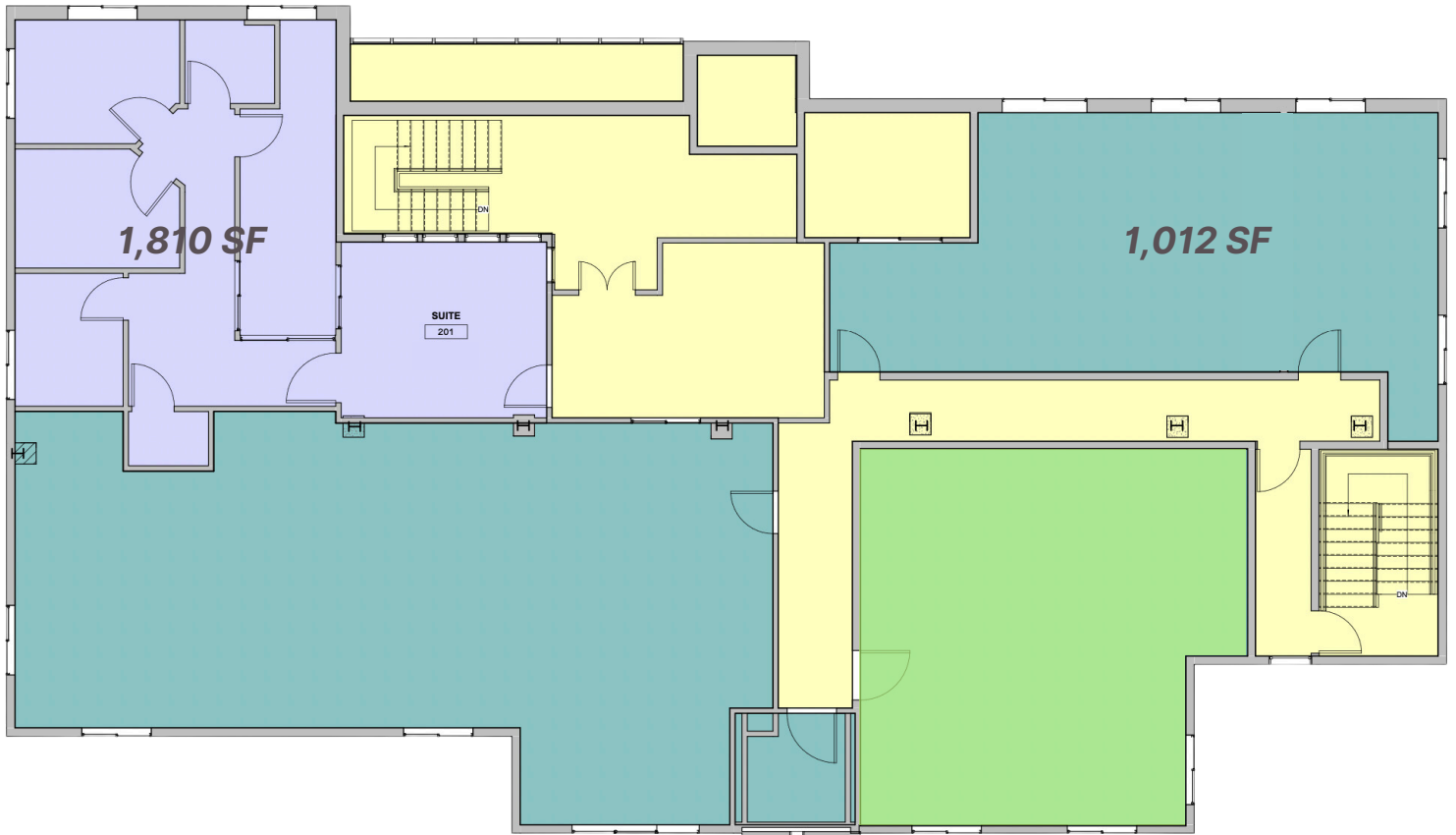


FLOOR PLAN - First Floor



1,273 Square Feet

FLOOR PLAN - Second Floor



R.W. HOLMES
COMMERCIAL REAL ESTATE

FOR MORE INFORMATION CONTACT: **CRAIG JOHNSTON**
CJOHNSTON@RWHOLMES.COM
(508)651-9022

R.W. HOLMES COMMERCIAL REAL ESTATE 321 COMMONWEALTH ROAD, SUITE 202, WAYLAND, MA. 01778 (508)655-5626

All information furnished regarding property for sale, rental or financing is from sources deemed reliable. No representation is made as to the accuracy thereof and is submitted subject to errors, omissions, change of price, rental or other conditions, prior sale, lease or financing, or withdrawal without notice.