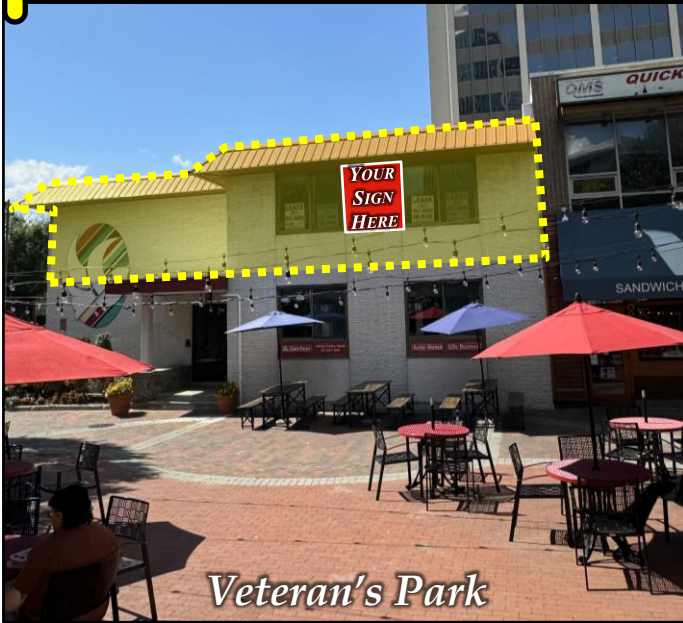


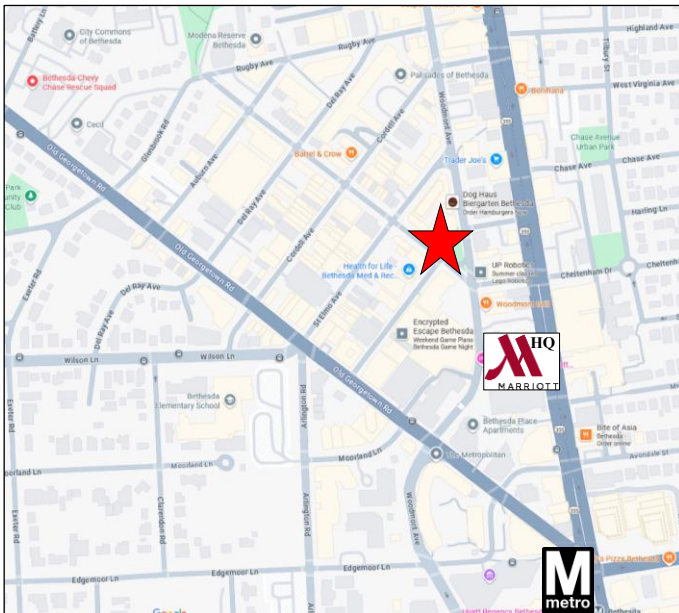
PROMINENT SIGNAGE

7801 Norfolk Avenue ♦ Bethesda, Maryland 20814

FOR LEASE



- 2,556 square feet
- 2nd floor walk-up space available immediately
- 6 offices / conference rooms, large open area, kitchen & large reception area
- Window line on the corner of Norfolk Avenue and Woodmont Avenue
- One-half block to new Marriott World Headquarters
- In the heart of Woodmont Triangle, steps from dozens of shops and restaurants including Starbucks, Woodmont Grill, Jetties, Z Burger, Tastee Diner, Black's Bar & Kitchen, Dog Haus, Medium Rare, and many more.



For more information or to schedule a tour, please contact:

301.961.9696

Gillin Smith - ext. 209

gsmith@amrcommercial.com

Jack Alexander - ext. 207

jalexander@amrcommercial.com



ALEXANDER, MONTROSE, RITTENBERG
Commercial Real Estate Brokerage
Est. 1994

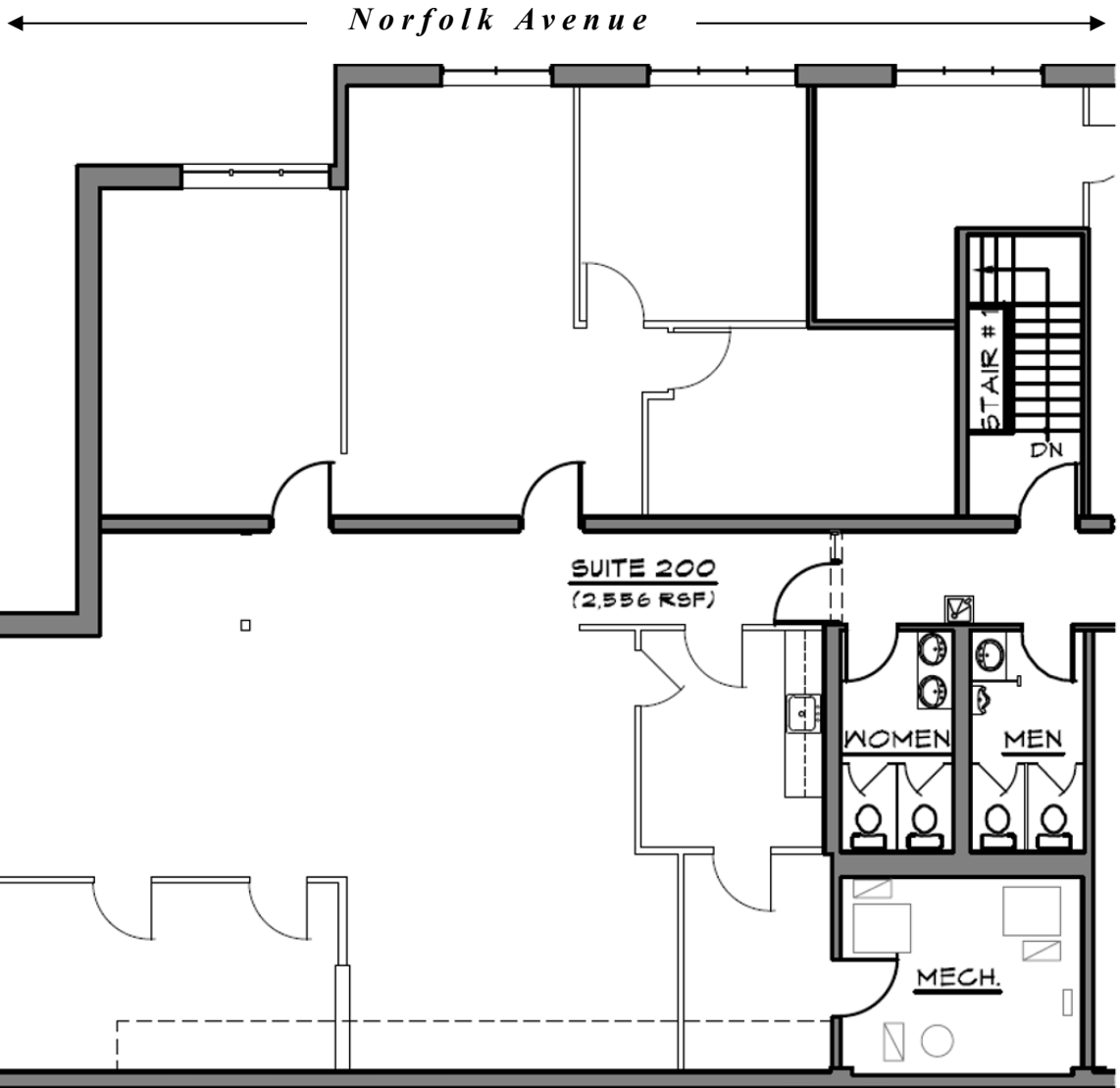
Celebrating
31
Years
1994-2025

Although all information is furnished regarding for sale, rental or financing is from sources we deem reliable, such information has not been verified and no express representation is made nor is any to be implied as to the accuracy thereof, and it is submitted subject to errors, omissions, changes of price, rental or other conditions, prior sale, lease or financing or withdrawal without notice.

7801 Norfolk Avenue ♦ Bethesda, Maryland 20814

2nd Floor
2,556 S.F.

VETERANS PARK



NOT TO SCALE | MEASUREMENTS APPROXIMATE



ALEXANDER, MONTROSE, RITTENBERG
Commercial Real Estate Brokerage
Est. 1994

Celebrating
31
Years
1994-2025

Although all information is furnished regarding for sale, rental or financing is from sources we deem reliable, such information has not been verified and no express representation is made nor is any to be implied as to the accuracy thereof, and it is submitted subject to errors, omissions, changes of price, rental or other conditions, prior sale, lease or financing or withdrawal without notice.

4849 Rugby Avenue ♦ Suite 200 ♦ Bethesda, Maryland 20814 ♦ 301.961.9696 ♦ Fax 301.656.7551 ♦ www.amrcommercial.com

7801 Norfolk Avenue ♦ Bethesda, Maryland 20814



ALEXANDER, MONTROSE, RITTENBERG
Commercial Real Estate Brokerage
Est. 1994

Celebrating
31
Years
1994-2025

Although all information is furnished regarding for sale, rental or financing is from sources we deem reliable, such information has not been verified and no express representation is made nor is any to be implied as to the accuracy thereof, and it is submitted subject to errors, omissions, changes of price, rental or other conditions, prior sale, lease or financing or withdrawal without notice.

4849 Rugby Avenue ♦ Suite 200 ♦ Bethesda, Maryland 20814 ♦ 301.961.9696 ♦ Fax 301.656.7551 ♦ www.amrcommercial.com

7801 Norfolk Avenue ♦ Bethesda, Maryland 20814

AERIAL VIEWS



With proximity to Woodmont Triangle's best amenities, Bethesda Metro, and Marriott Headquarters, 7809 Woodmont is surrounded by 5.3 million square feet of office, over 5,000 residential units, and almost 600 hotel rooms within walking distance.



Although all information is furnished regarding for sale, rental or financing is from sources we deem reliable, such information has not been verified and no express representation is made nor is any to be implied as to the accuracy thereof, and it is submitted subject to errors, omissions, changes of price, rental or other conditions, prior sale, lease or financing or withdrawal without notice.

4849 Rugby Avenue ♦ Suite 200 ♦ Bethesda, Maryland 20814 ♦ 301.961.9696 ♦ Fax 301.656.7551 ♦ www.amrcommercial.com