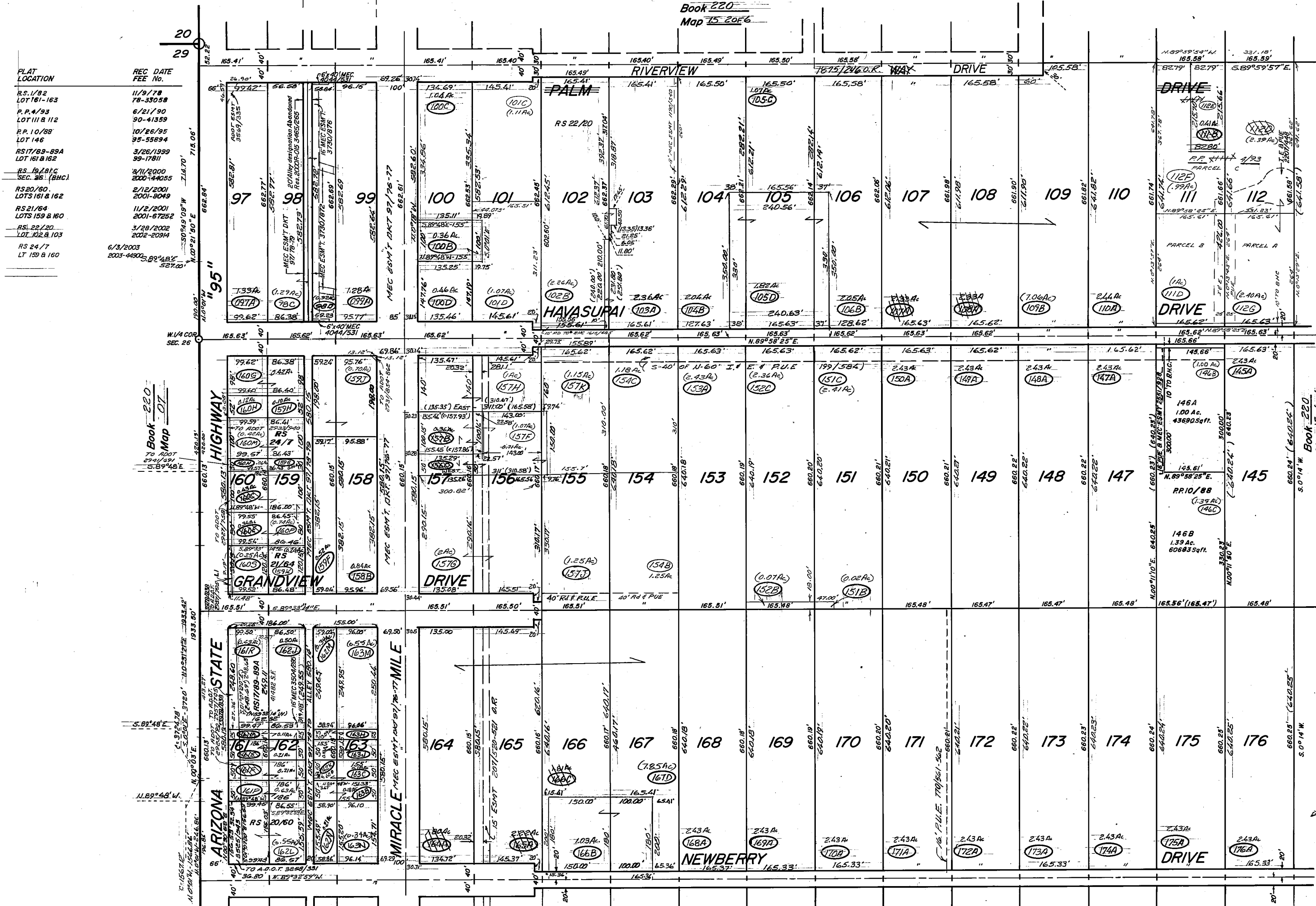


REC. NOV. 21, 1972 FEE N° 72-25107

L1 (500°34'41"E 120.02') N01°28'7"W 120.04'

3 OF 6

Code 1579



PLAT LOCATION	REC DATE	FEE No.
RS 1/82 LOT 161-163	11/9/78	78-33058
P.P. 4/93 LOT 111 & 112	6/21/90	90-41359
P.P. 10/88 LOT 146	10/26/95	95-55894
RS 17/89-89A LOT 161 & 162	3/26/1999	99-17811
RS 19/81C SEC. 26 (BMC)	8/11/2000	2000-44065
RS 20/80, LOTS 161 & 162	2/12/2001	2001-9049
RS 21/84 LOTS 159 & 160	11/2/2001	2001-67252
RS 22/20 LOT 102 & 103	3/28/2002	2002-20914
RS 24/7 LT 159 & 160	6/3/2003	2003-44905

Book 220
Map 07

Book 220
Map 15-40F6



20N., 22W., 26 Aug. 18, 2005

Book 220
Map 15-60F6

MOHAVE COUNTY
ASSESSOR'S MAP

VOID
11/5/07 ac
To GIS