

BERNAL CORPORATE PLAZA

6700 & 6800

SYCAMORE PLAZA

6701 & 6801

KOLL CENTER PARKWAY

PLEASANTON, CA

NEWMARK

KGIP

Principal



BERNAL CORPORATE PLAZA

6700 & 6800



Two 3-Story Buildings



± 110,750 SF per Building



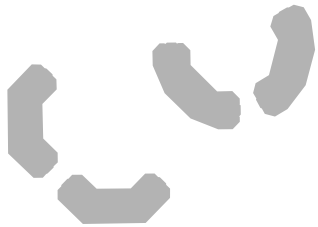
Typical Floor Size ± 38,695 SF



Parking 3.82/1,000 SF

BERNAL & SYCAMORE PLAZAS

A City Within A City



- Located within Bernal Corporate Park, a 1.2 million square foot 99-acre master-planned business park community with office, R&D and retail space
- Both buildings are LEED Gold Certified and Energy Star Rated
- New onsite Café run by The Worth Group serving coffee, breakfast and lunch daily
- New onsite fitness room with lockers and showers, exclusive to Bernal and Sycamore Tenants
- New onsite common conference room seating up to 30, free of charge, exclusive to Bernal and Sycamore Tenants
- Continued free access to Bernal Corporate Park fitness center and conference rooms
- Excellent visibility and building identity
- Excellent freeway access to I-680
- BART access via Wheels
- 1/2 mile from historic downtown Pleasanton with hotels, restaurants and many other amenities
- Child care facility, walking trail and par course in Bernal Corporate Park
- On-site property management
- Located walking distance to Pleasanton Gateway Retail Plaza, a new Safeway life style center and Bernal Retail Plaza

SYCAMORE PLAZA

6701 & 6801



Two 4-Story Buildings



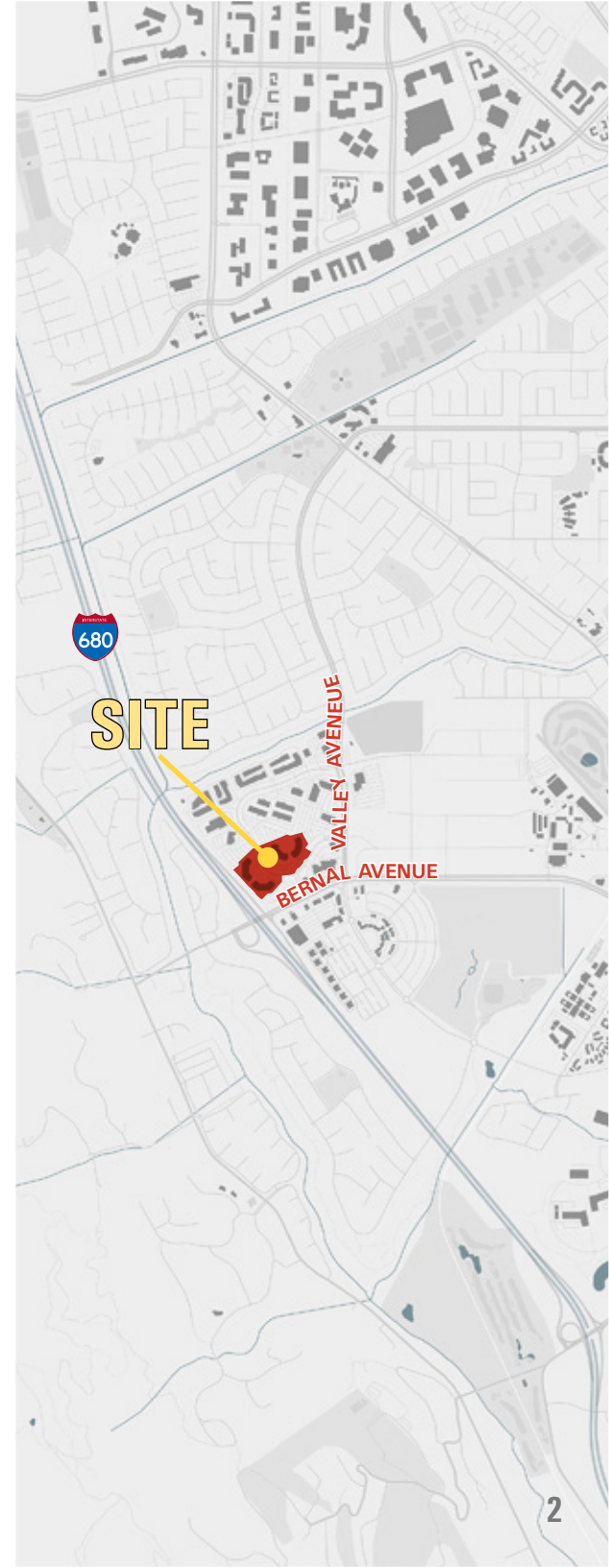
± 124,000 SF per Building



Typical Floor Size ± 32,000 SF



Parking 3.82/1,000 SF



EXCLUSIVE AGENTS

JEFF MORGENSTERN SENIOR MANAGING DIRECTOR

925.467.0905 | JEFF.MORGENSTERN@NMRK.COM | CA RE LICENSE #01275910

DAN WATSON EXECUTIVE VICE PRESIDENT

925.467.0903 | DAN.WATSON@NMRK.COM | CA RE LICENSE #01438710

EMPLOYEE OUTDOOR AREA



SYCAMORE PLAZA

6701 & 6801

EXCLUSIVE AGENTS

JEFF MORGENSTERN SENIOR MANAGING DIRECTOR
925.467.0905 | JEFF.MORGENSTERN@NMRK.COM | CA RE LICENSE #01275910

DAN WATSON EXECUTIVE VICE PRESIDENT
925.467.0903 | DAN.WATSON@NMRK.COM | CA RE LICENSE #01438710

BUILDING AMENITIES



Cafe



Fitness Center



Conference Room



Conference Room

SYCAMORE PLAZA

6701 & 6801

EXCLUSIVE AGENTS

JEFF MORGENSTERN SENIOR MANAGING DIRECTOR
925.467.0905 | JEFF.MORGENSTERN@NMRK.COM | CA RE LICENSE #01275910

DAN WATSON EXECUTIVE VICE PRESIDENT
925.467.0903 | DAN.WATSON@NMRK.COM | CA RE LICENSE #01438710

BERNAL CORPORATE PLAZA

6700 & 6800

Pleasanton Community Center and Deli

AMENITIES AERIAL

Common Conference Room & Fitness Center

Primrose School of Pleasanton



KOLL CENTER PKWY

VALLEY AVENUE



BERNAL CORPORATE PLAZA
6700 & 6800

SYCAMORE PLAZA
6701 & 6801



Sultan's Mediterranean | Round Table
Jersey Mike's SUBS | verizon | Mexico Lindo
FREMONT BANK | VITALITY BOWLS | CHIPOTLE | COOK'S SEAFOOD



I-680/Bernal Ave Exit

SAFEGWAY | WELLS FARGO | STARBUCKS

SUBWAY | CVS/pharmacy | The UPS Store | UnionBank
Jamba Juice | Market House NOW | Habit Burger Grill | Panda Express

SYCAMORE PLAZA 6701 & 6801

EXCLUSIVE AGENTS

JEFF MORGENSTERN SENIOR MANAGING DIRECTOR
925.467.0905 | JEFF.MORGENSTERN@NMRK.COM | CA RE LICENSE #01275910

DAN WATSON EXECUTIVE VICE PRESIDENT
925.467.0903 | DAN.WATSON@NMRK.COM | CA RE LICENSE #01438710

BERNAL CORPORATE PLAZA

AVAILABLE SPACE



| BUILDING | SUITE | SF | Floorplan | COMMENTS |
|-------------|-------|--------------|---------------------|--|
| 6700 | 119 | ± 1,985 RSF | P8 | Three offices, conference rooms, kitchen, open area. Available August 1, 2024. |
| 6700 | 320 | ± 2,088 RSF | P9 | Two offices, conference room, kitchen , open area. |
| 6700 | 240 | ± 2,215 RSF | P10 | Four offices, conference room, kitchen , open area. |
| 6700 | 150 | ± 2,107 RSF | P11 | Four offices, kitchen, open area. <i>HYPOTHETICAL</i> |
| 6700 | 215 | ± 2,559 RSF | P12 | Four offices, conference room, kitchen, open area. |
| 6700 | 130 | ± 2,615 RSF | P13 | Market Ready Complete - Six private offices, conference room, kitchen and open area. |
| 6700 | 250 | ± 5,278 RSF | P14 | Eight private offices, conference room, kitchen and open area. <i>HYPOTHETICAL</i> |
| 6700 | 200 | ± 7,077 RSF | P15 | Seven offices, conference room, open area and kitchen. |
| 6700 | 109 | ± 7,691 RSF | P16 | Ten offices, conference room, kitchen, open area |
| 6800 | 230 | ± 7,734 RSF | P17 | Double-door entry off elevator landing. Mix of offices, open areas and a large conference room. |
| 6800 | 310 | ± 13,116 RSF | P18 | Mix of offices and open area. |
| 6700 | 300 | ± 25,075 RSF | P19 | Divisible. Combination of offices and open area. Three sides of window line with double door entry from lobby. |

BERNAL CORPORATE PLAZA

6700 & 6800

EXCLUSIVE AGENTS

JEFF MORGENSTERN SENIOR MANAGING DIRECTOR
 925.467.0905 | JEFF.MORGENSTERN@NMRK.COM | CA RE LICENSE #01275910

DAN WATSON EXECUTIVE VICE PRESIDENT
 925.467.0903 | DAN.WATSON@NMRK.COM | CA RE LICENSE #01438710

SYCAMORE PLAZA

AVAILABLE SPACE



| BUILDING | SUITE | SF | Floorplan | COMMENTS |
|-------------|------------|--------------------|---------------------|---|
| 6701 | Café - 100 | ± 1,396 RSF | P20 | Newly built out and furnished CAFÉ space, with walk-in refrigerator and buffet line equipment. Available Now. Total area is 3,280 RSF |
| 6801 | 110 | ± 2,242 RSF | P21 | Corner space with two sides of window line. 2 offices, open area. |
| 6701 | 350 | ± 4,594 RSF | P22 | Double Door entry off of elevator landing, High end space with above standard improvements. Available 7/1/24. |
| 6801 | 150 | ± 5,202 RSF | P23 | Ground floor lobby double door entry. Combination of office and conference room, kitchen and open area. |
| 6701 | 450 | ± 5,726 RSF | P24 | Divisible to ± 2,237 RSF. Spectacular views with open floor plan and market ready improvements. |
| 6801 | 200 | ± 16,699 RSF | P25 | Double door entry off of the elevator landing, with mix of open area, offices, storage and large kitchen area. |
| 6801 | 400 | ± 32,848 RSF | P26 | Full floor available |
| 6801 | Multiple | Up to ± 82,395 RSF | NA | Up to 2.5 floors available with parapet building signage available. |

SYCAMORE PLAZA

6701 & 6801

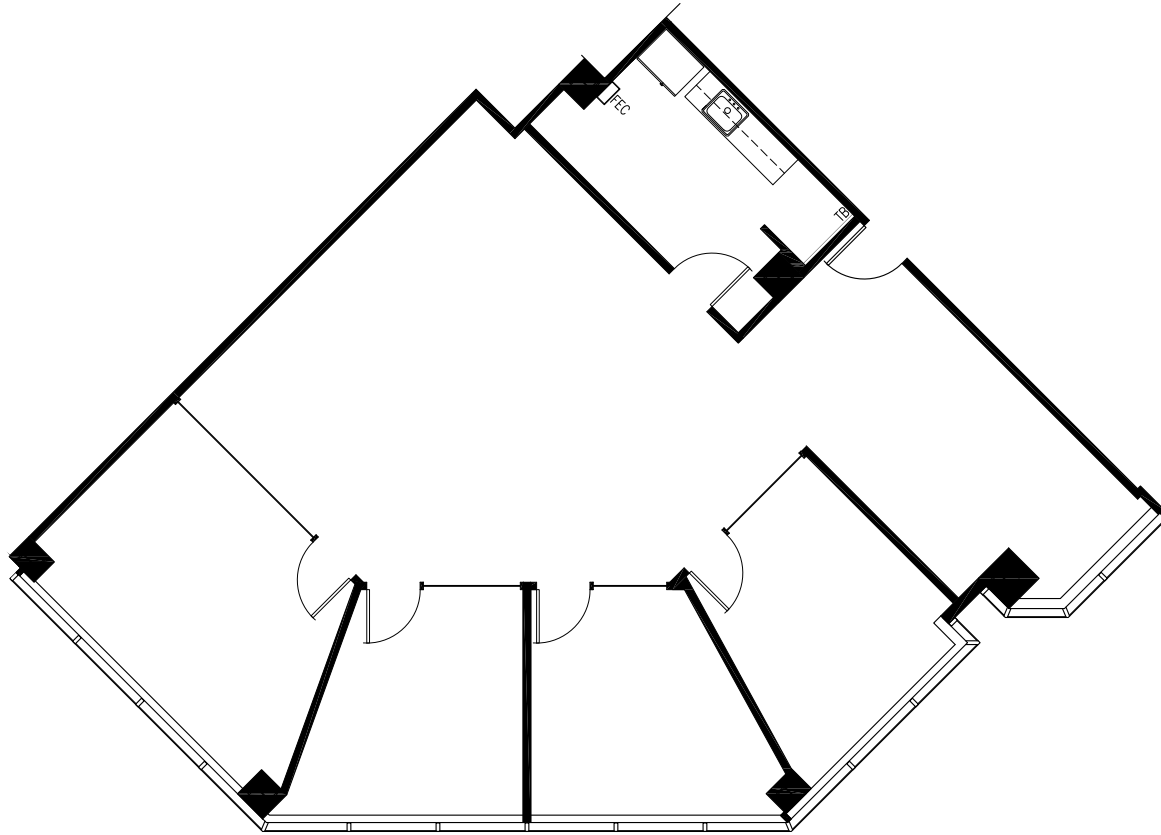
EXCLUSIVE AGENTS

JEFF MORGENSTERN SENIOR MANAGING DIRECTOR
925.467.0905 | JEFF.MORGENSTERN@NMRK.COM | CA RE LICENSE #01275910

DAN WATSON EXECUTIVE VICE PRESIDENT
925.467.0903 | DAN.WATSON@NMRK.COM | CA RE LICENSE #01438710

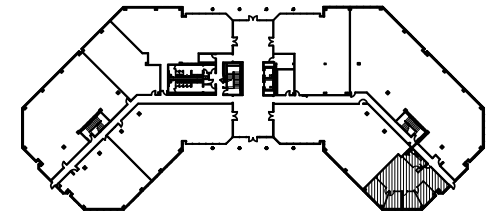
FLOOR PLANS

Available Space



**BERNAL CORPORATE
PLAZA 6700**

STE 119 / ±1,985 RSF



KEY PLAN

EXCLUSIVE AGENTS

JEFF MORGENSTERN SENIOR MANAGING DIRECTOR

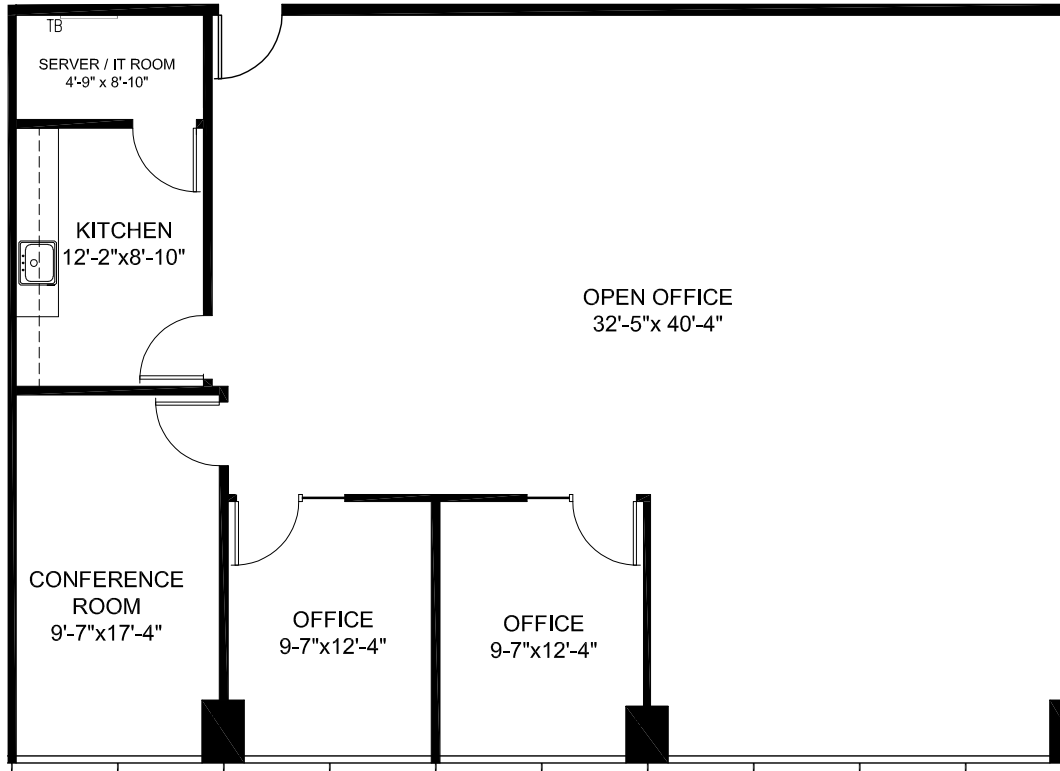
925.467.0905 | JEFF.MORGENSTERN@NMRK.COM | CA RE LICENSE #01275910

DAN WATSON EXECUTIVE VICE PRESIDENT

925.467.0903 | DAN.WATSON@NMRK.COM | CA RE LICENSE #01438710

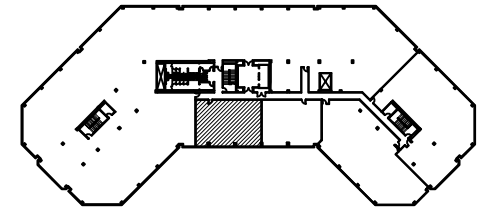
FLOOR PLANS

Available Space



**BERNAL CORPORATE
PLAZA 6700**

STE 320 / ±2,088 RSF



EXCLUSIVE AGENTS

JEFF MORGENSTERN SENIOR MANAGING DIRECTOR

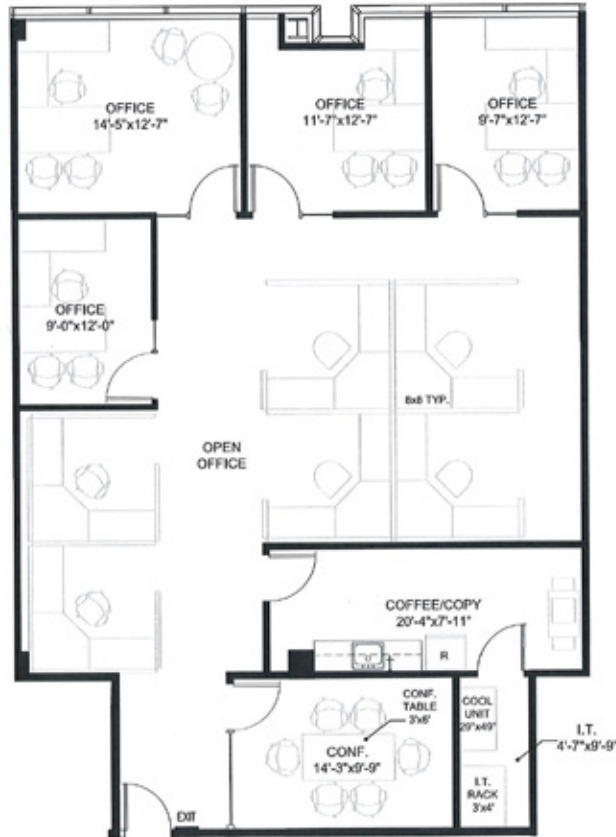
925.467.0905 | JEFF.MORGENSTERN@NMRK.COM | CA RE LICENSE #01275910

DAN WATSON EXECUTIVE VICE PRESIDENT

925.467.0903 | DAN.WATSON@NMRK.COM | CA RE LICENSE #01438710

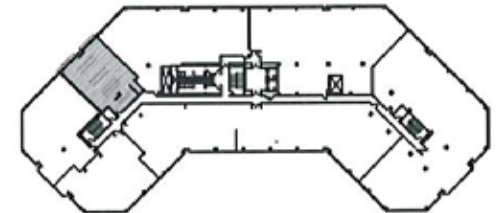
FLOOR PLANS

Available Space



**BERNAL CORPORATE
PLAZA 6700**

STE 240 / ±2,215 RSF



EXCLUSIVE AGENTS

JEFF MORGENSTERN SENIOR MANAGING DIRECTOR

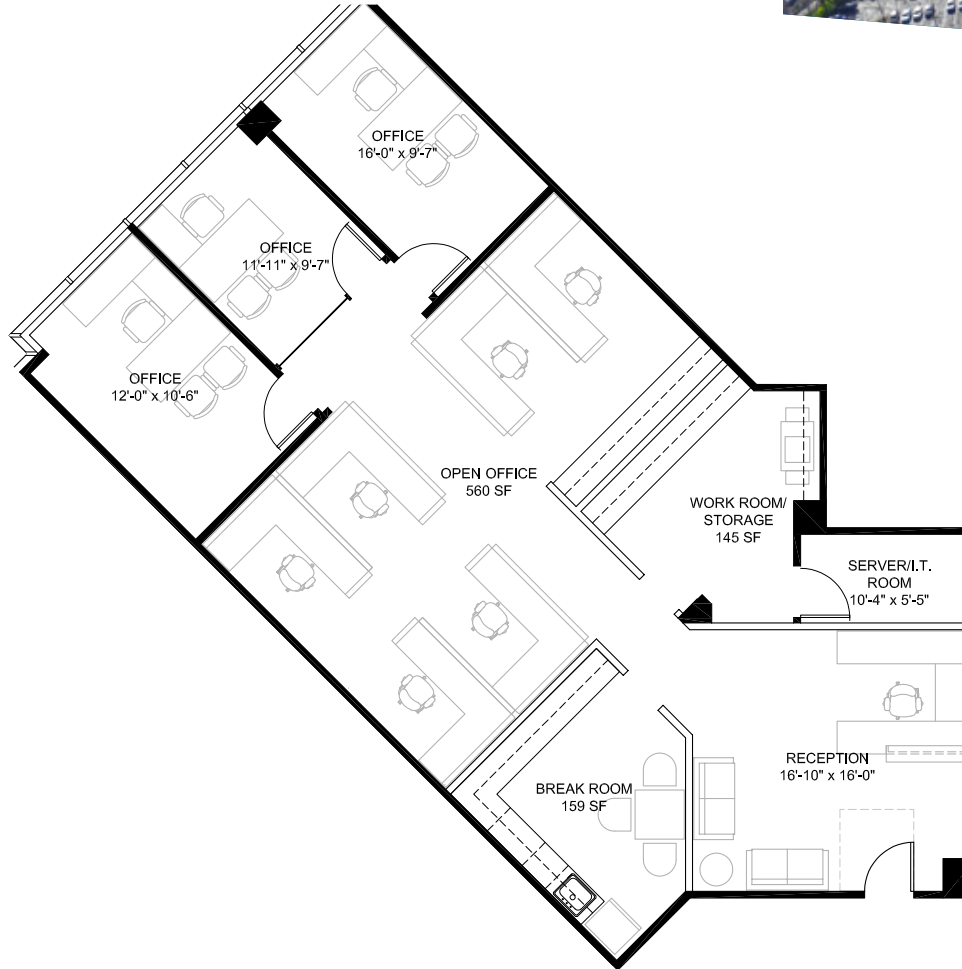
925.467.0905 | JEFF.MORGENSTERN@NMRK.COM | CA RE LICENSE #01275910

DAN WATSON EXECUTIVE VICE PRESIDENT

925.467.0903 | DAN.WATSON@NMRK.COM | CA RE LICENSE #01438710

FLOOR PLANS

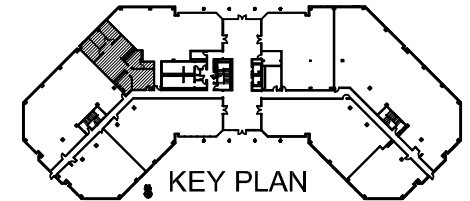
Available Space



Hypothetical

**BERNAL CORPORATE
PLAZA 6700**

STE 150 / ±2107 RSF



EXCLUSIVE AGENTS

JEFF MORGENSTERN SENIOR MANAGING DIRECTOR

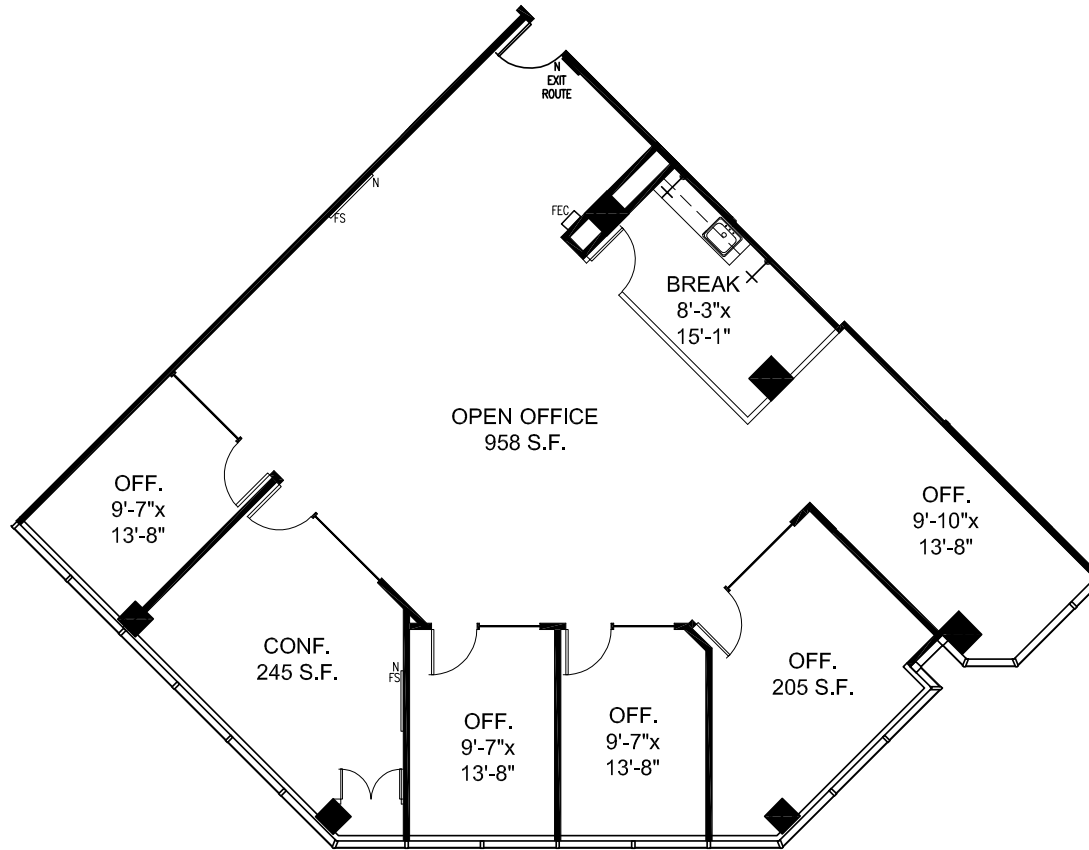
925.467.0905 | JEFF.MORGENSTERN@NMRK.COM | CA RE LICENSE #01275910

DAN WATSON EXECUTIVE VICE PRESIDENT

925.467.0903 | DAN.WATSON@NMRK.COM | CA RE LICENSE #01438710

FLOOR PLANS

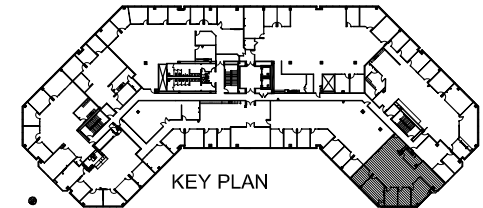
Available Space



Hypothetical

**BERNAL CORPORATE
PLAZA 6700**

STE 215 / ±2,559 RSF



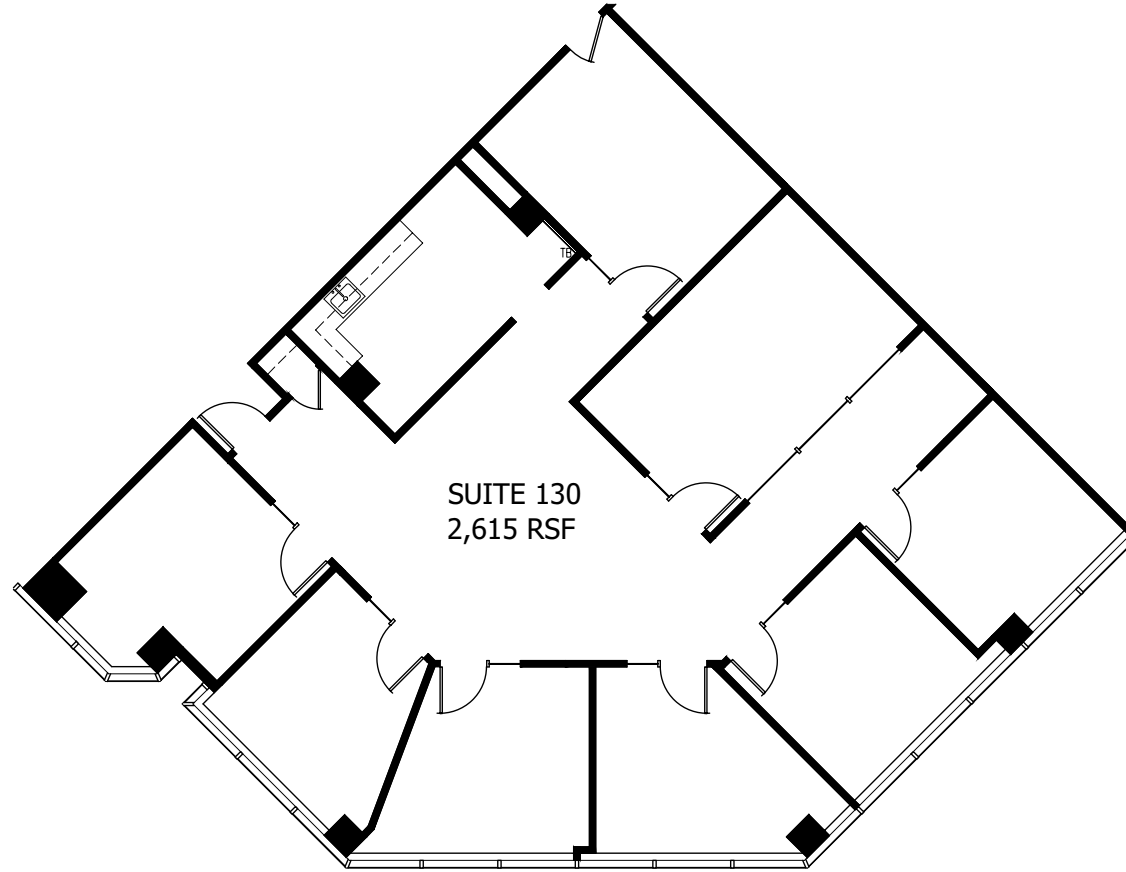
EXCLUSIVE AGENTS

JEFF MORGENSTERN SENIOR MANAGING DIRECTOR
925.467.0905 | JEFF.MORGENSTERN@NMRK.COM | CA RE LICENSE #01275910

DAN WATSON EXECUTIVE VICE PRESIDENT
925.467.0903 | DAN.WATSON@NMRK.COM | CA RE LICENSE #01438710

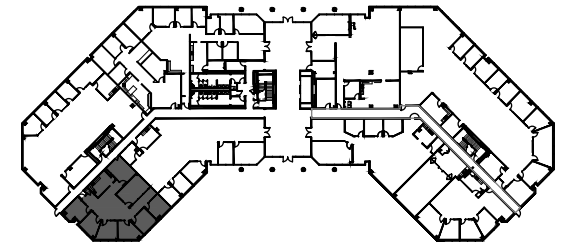
FLOOR PLANS

Available Space



**BERNAL CORPORATE
PLAZA 6700**

STE 130 / ±2,615 RSF



EXCLUSIVE AGENTS

JEFF MORGENSTERN SENIOR MANAGING DIRECTOR

925.467.0905 | JEFF.MORGENSTERN@NMRK.COM | CA RE LICENSE #01275910

DAN WATSON EXECUTIVE VICE PRESIDENT

925.467.0903 | DAN.WATSON@NMRK.COM | CA RE LICENSE #01438710

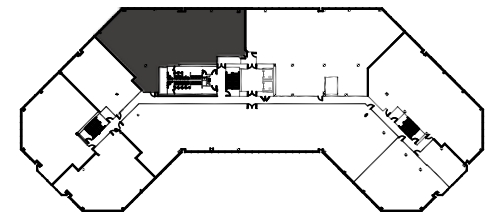
FLOOR PLANS

Available Space



**BERNAL CORPORATE
PLAZA 6700**

STE 250 / ±5,278 RSF



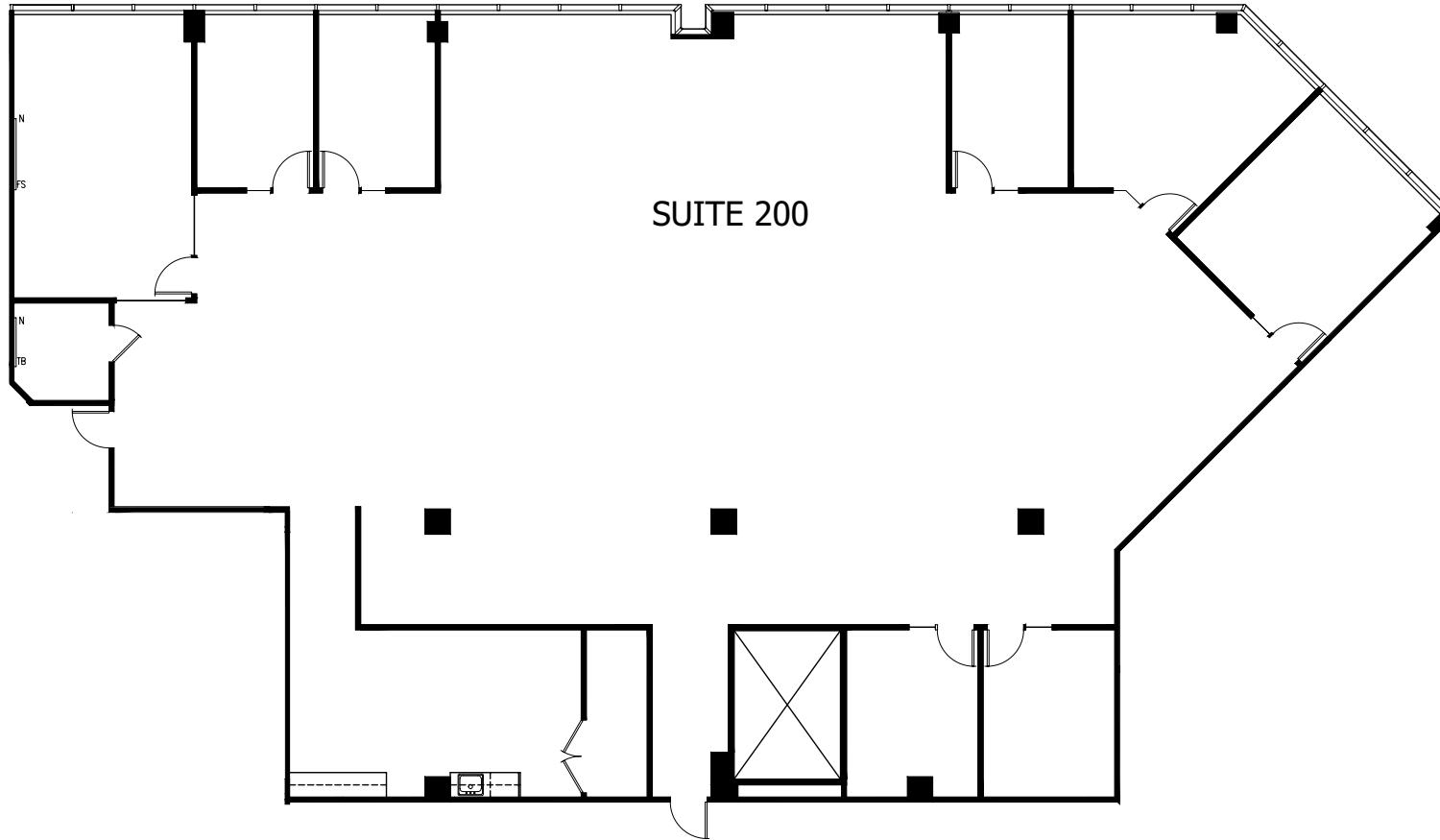
EXCLUSIVE AGENTS

JEFF MORGENSTERN SENIOR MANAGING DIRECTOR
925.467.0905 | JEFF.MORGENSTERN@NMRK.COM | CA RE LICENSE #01275910

DAN WATSON EXECUTIVE VICE PRESIDENT
925.467.0903 | DAN.WATSON@NMRK.COM | CA RE LICENSE #01438710

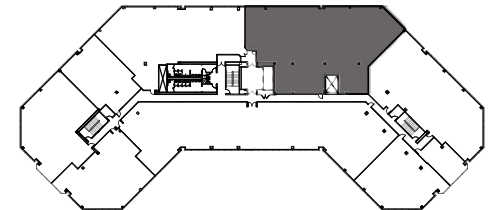
FLOOR PLANS

Available Space



**BERNAL CORPORATE
PLAZA 6700**

STE 200 / ±7,077 RSF



EXCLUSIVE AGENTS

JEFF MORGENSTERN SENIOR MANAGING DIRECTOR

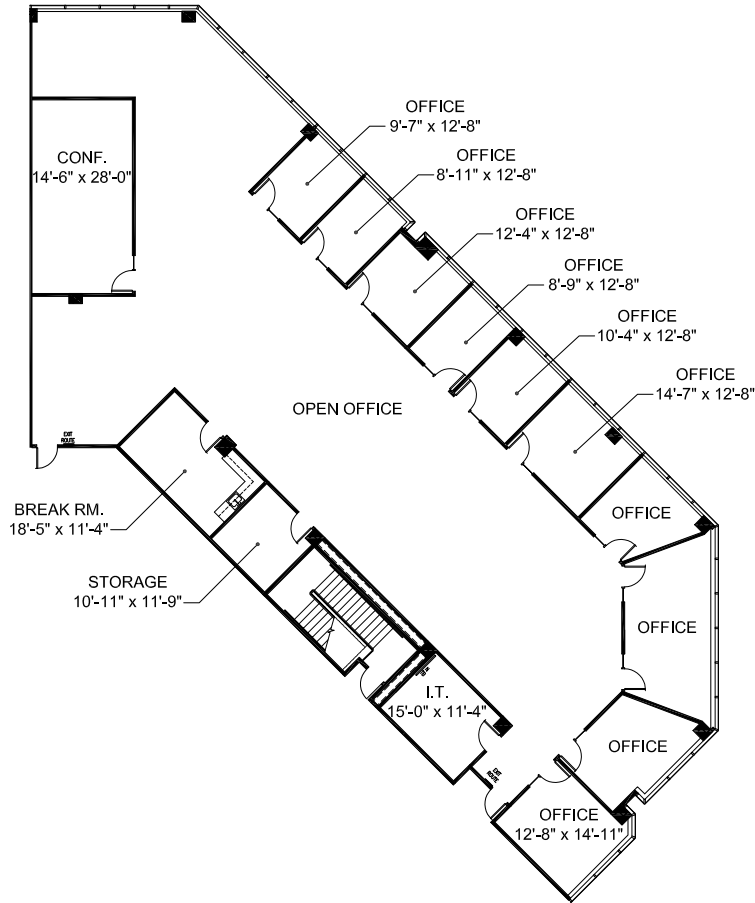
925.467.0905 | JEFF.MORGENSTERN@NMRK.COM | CA RE LICENSE #01275910

DAN WATSON EXECUTIVE VICE PRESIDENT

925.467.0903 | DAN.WATSON@NMRK.COM | CA RE LICENSE #01438710

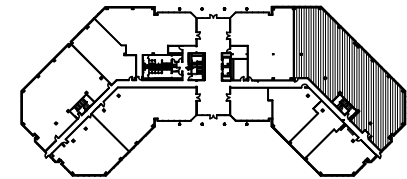
FLOOR PLANS

Available Space



**BERNAL CORPORATE
PLAZA 6700**

STE 109 / ±7,691 RSF



EXCLUSIVE AGENTS

JEFF MORGENSTERN SENIOR MANAGING DIRECTOR

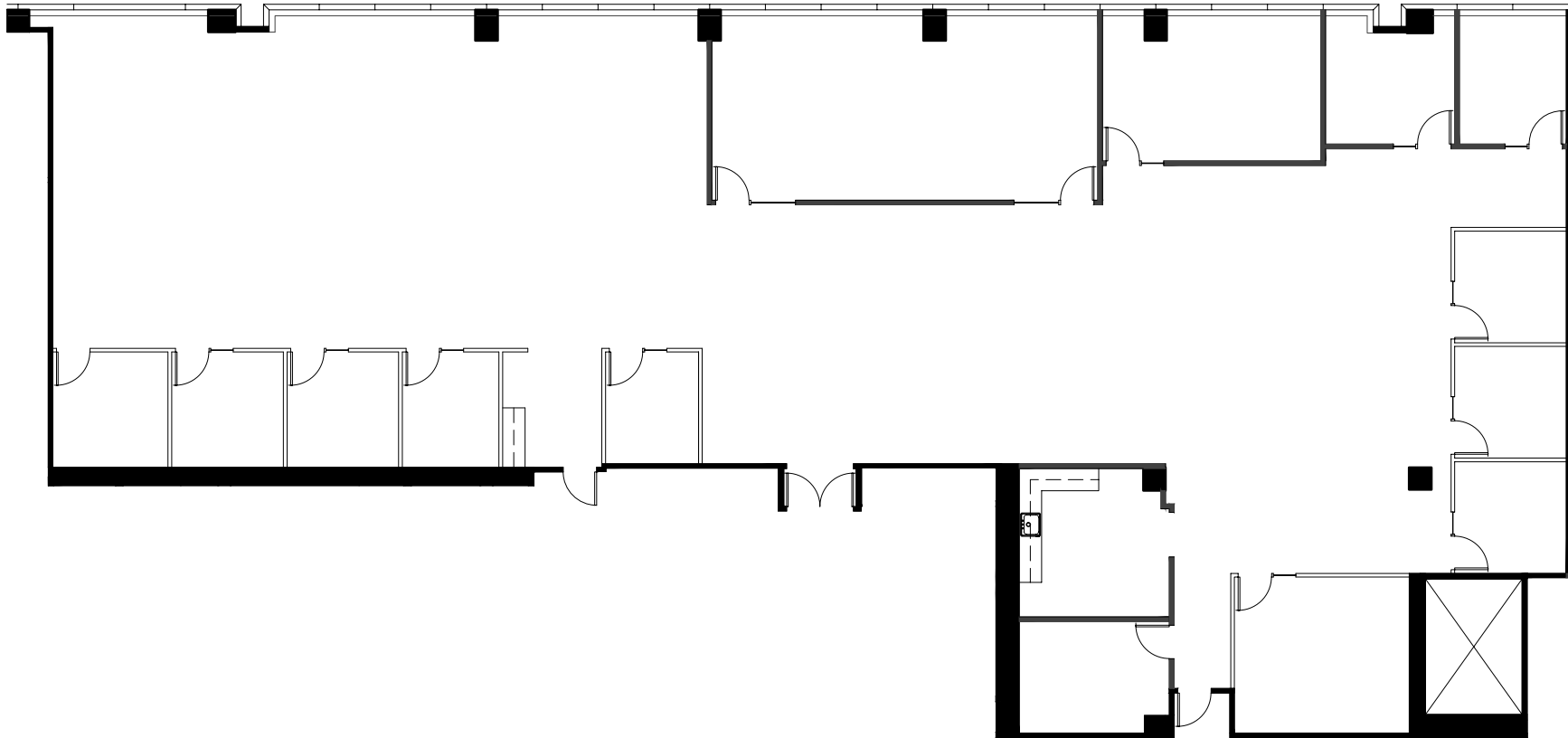
925.467.0905 | JEFF.MORGENSTERN@NMRK.COM | CA RE LICENSE #01275910

DAN WATSON EXECUTIVE VICE PRESIDENT

925.467.0903 | DAN.WATSON@NMRK.COM | CA RE LICENSE #01438710

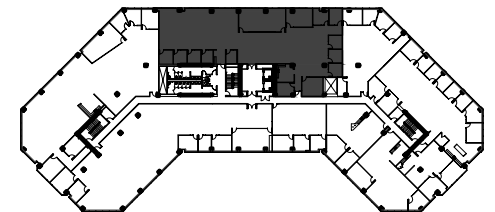
FLOOR PLANS

Available Space



**BERNAL CORPORATE
PLAZA 6800**

STE 230 | ±7,734 RSF



EXCLUSIVE AGENTS

JEFF MORGENSTERN SENIOR MANAGING DIRECTOR

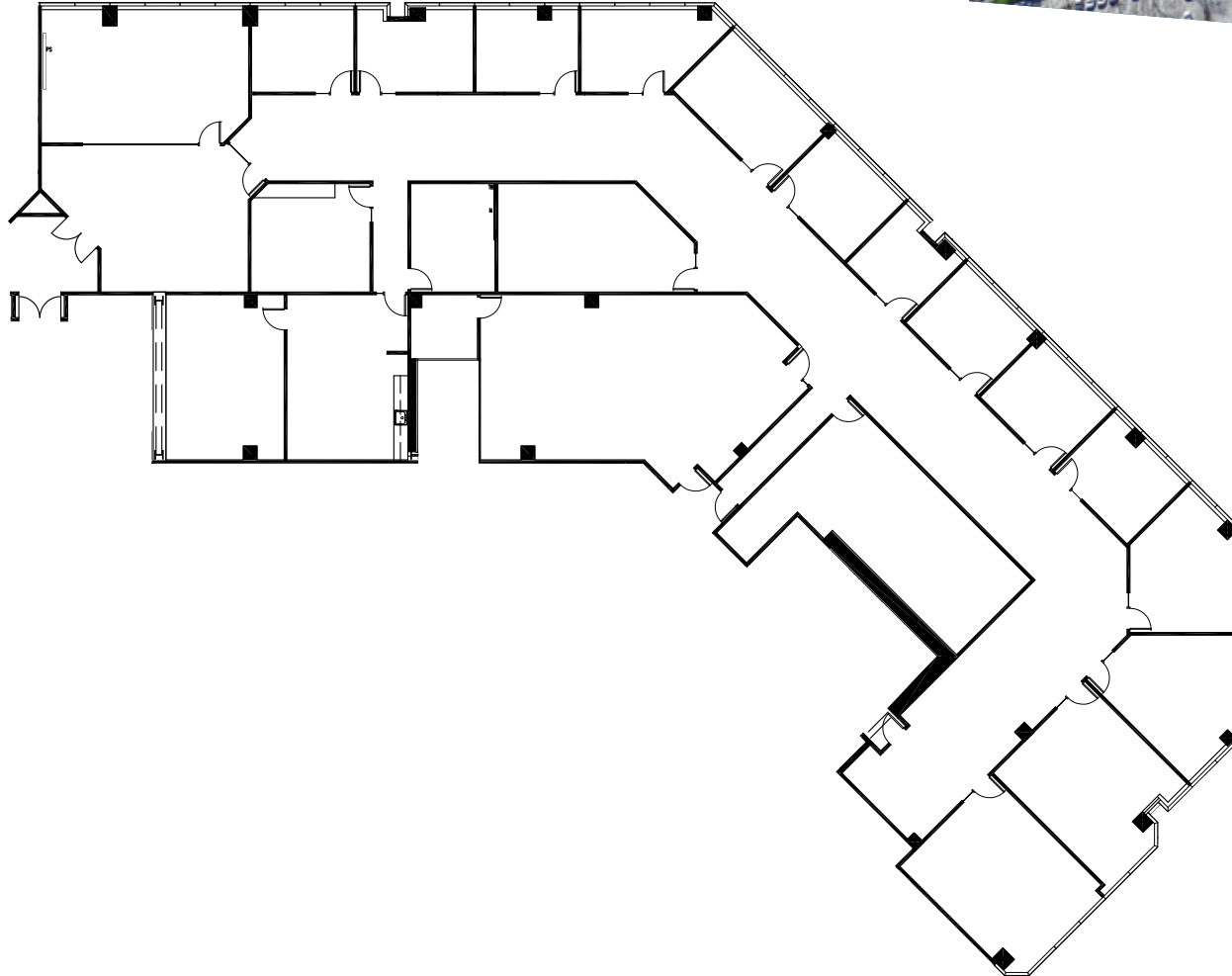
925.467.0905 | JEFF.MORGENSTERN@NMRK.COM | CA RE LICENSE #01275910

DAN WATSON EXECUTIVE VICE PRESIDENT

925.467.0903 | DAN.WATSON@NMRK.COM | CA RE LICENSE #01438710

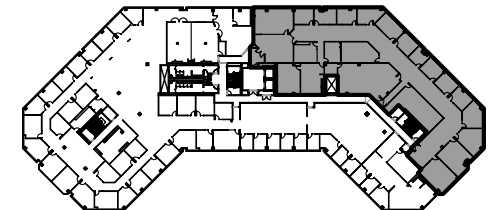
FLOOR PLANS

Available Space



**BERNAL CORPORATE
PLAZA 6800**

STE 310 / ± 13,116 RSF



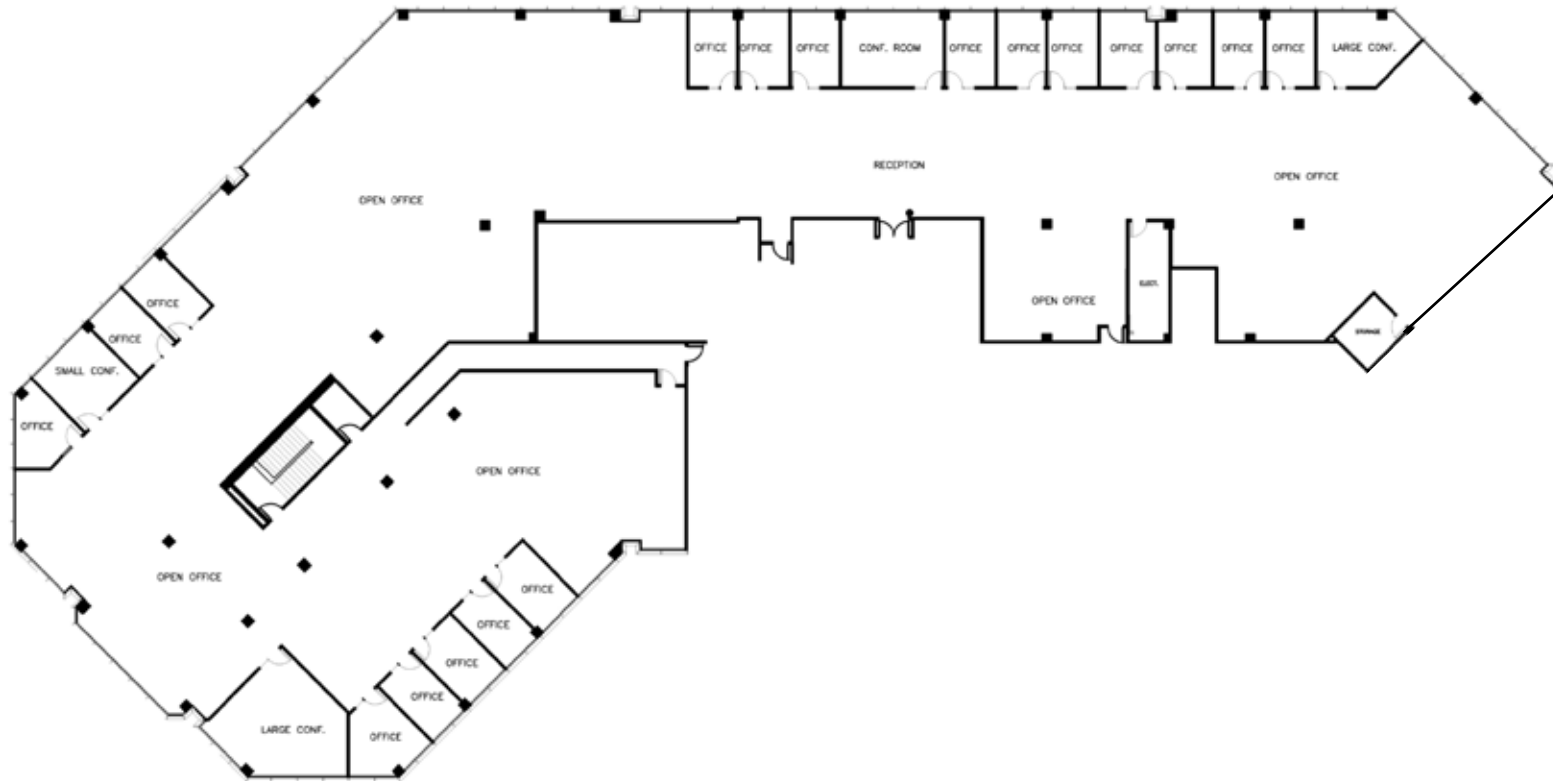
EXCLUSIVE AGENTS

JEFF MORGENSTERN SENIOR MANAGING DIRECTOR
925.467.0905 | JEFF.MORGENSTERN@NMRK.COM | CA RE LICENSE #01275910

DAN WATSON EXECUTIVE VICE PRESIDENT
925.467.0903 | DAN.WATSON@NMRK.COM | CA RE LICENSE #01438710

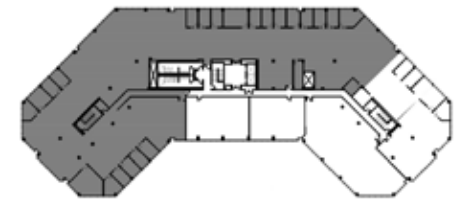
FLOOR PLANS

Available Space



**BERNAL CORPORATE
PLAZA 6700**

STE 300 / ± 25,075 RSF



EXCLUSIVE AGENTS

JEFF MORGENSTERN SENIOR MANAGING DIRECTOR

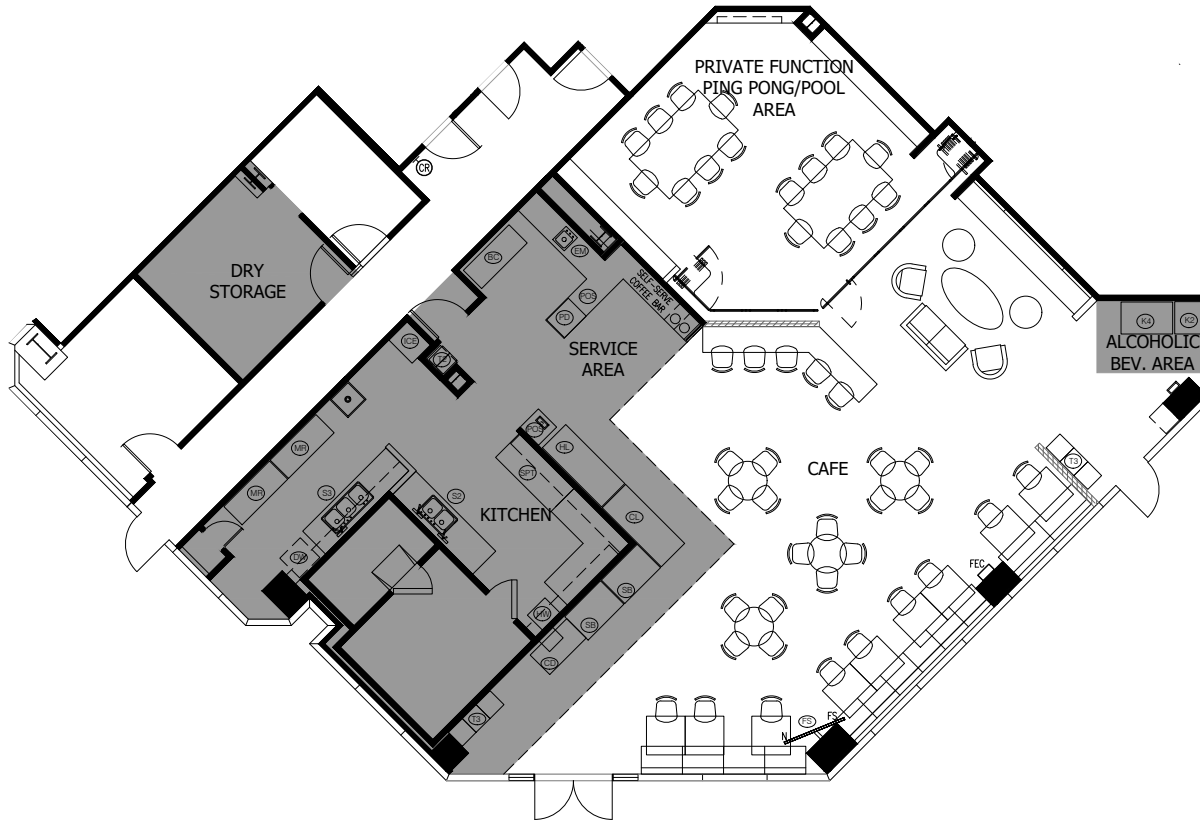
925.467.0905 | JEFF.MORGENSTERN@NMRK.COM | CA RE LICENSE #01275910

DAN WATSON EXECUTIVE VICE PRESIDENT

925.467.0903 | DAN.WATSON@NMRK.COM | CA RE LICENSE #01438710

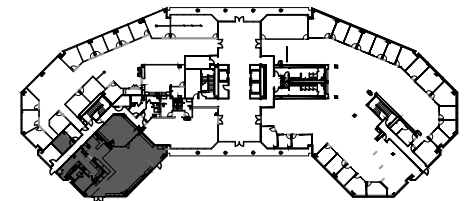
FLOOR PLANS

Available Space



**SYCAMORE
PLAZA 6701**

CAFE-STE 100 / ± 1,396 RSF



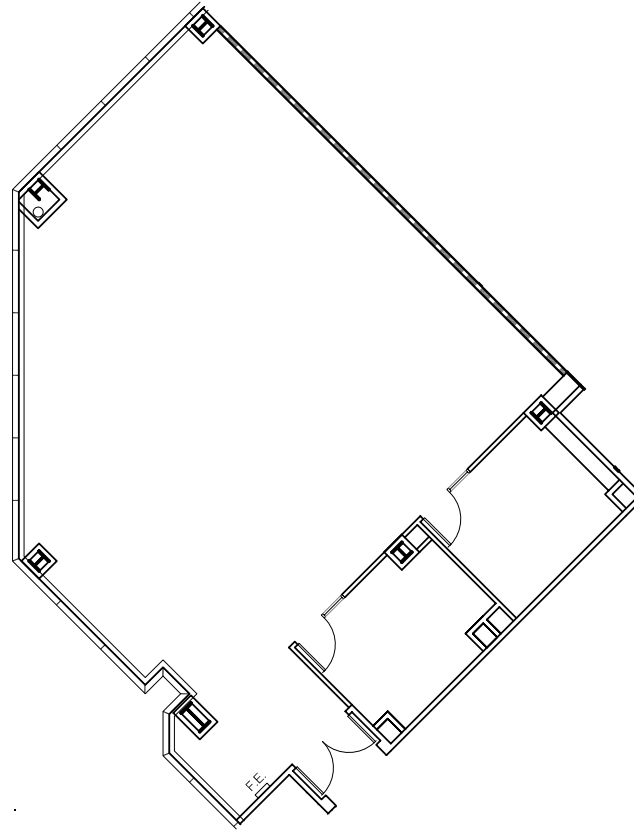
EXCLUSIVE AGENTS

JEFF MORGENSTERN SENIOR MANAGING DIRECTOR
925.467.0905 | JEFF.MORGENSTERN@NMRK.COM | CA RE LICENSE #01275910

DAN WATSON EXECUTIVE VICE PRESIDENT
925.467.0903 | DAN.WATSON@NMRK.COM | CA RE LICENSE #01438710

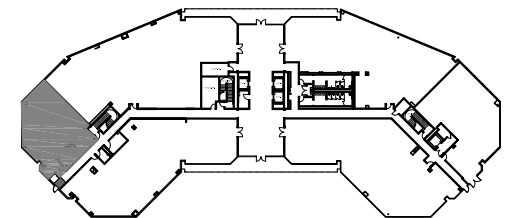
FLOOR PLANS

Available Space



**SYCAMORE
PLAZA 6801**

STE 110 / ±2,242 RSF



EXCLUSIVE AGENTS

JEFF MORGENSTERN SENIOR MANAGING DIRECTOR

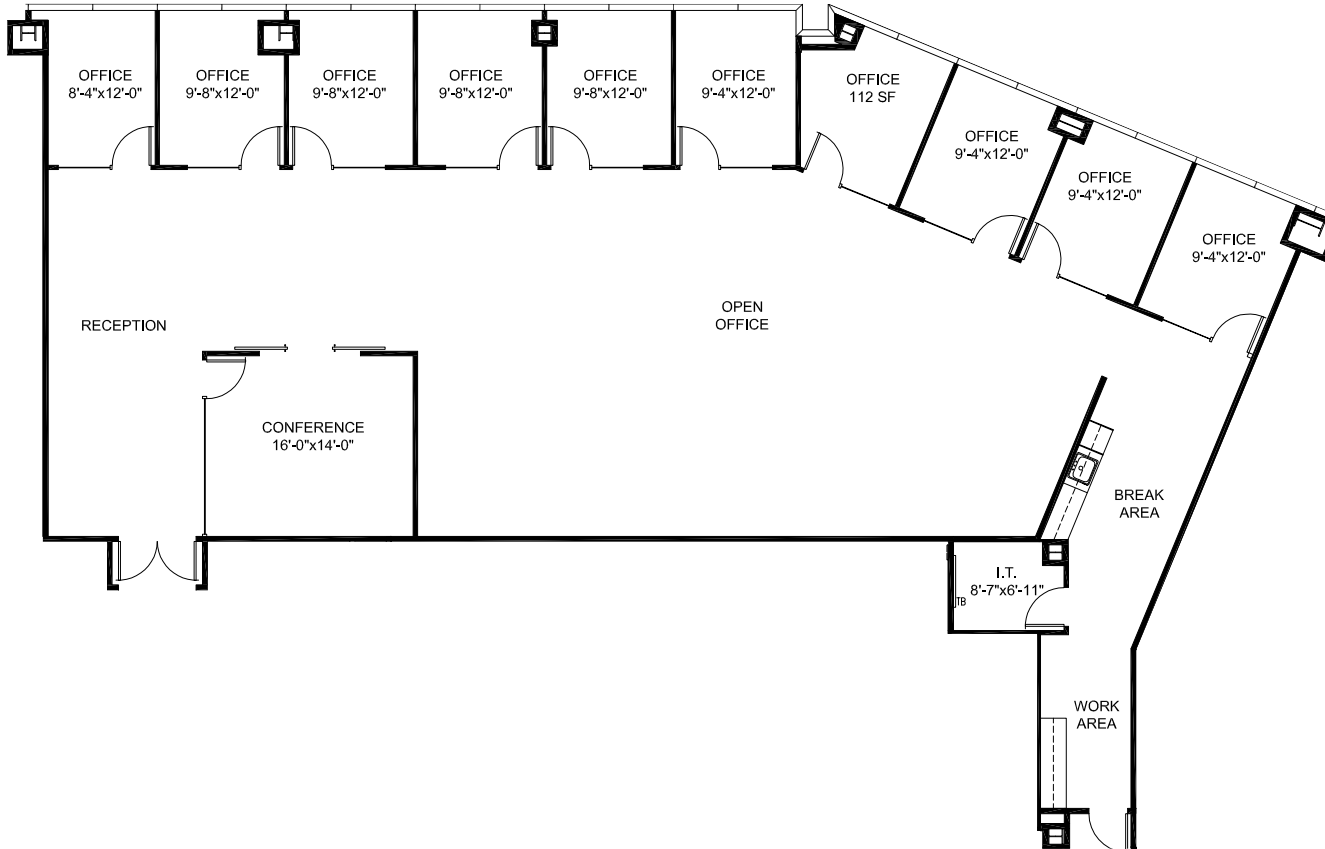
925.467.0905 | JEFF.MORGENSTERN@NMRK.COM | CA RE LICENSE #01275910

DAN WATSON EXECUTIVE VICE PRESIDENT

925.467.0903 | DAN.WATSON@NMRK.COM | CA RE LICENSE #01438710

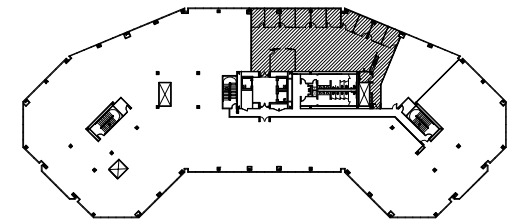
FLOOR PLANS

Available Space



**SYCAMORE
PLAZA 6701**

STE 350 / ±4,594 RSF



EXCLUSIVE AGENTS

JEFF MORGENSTERN SENIOR MANAGING DIRECTOR

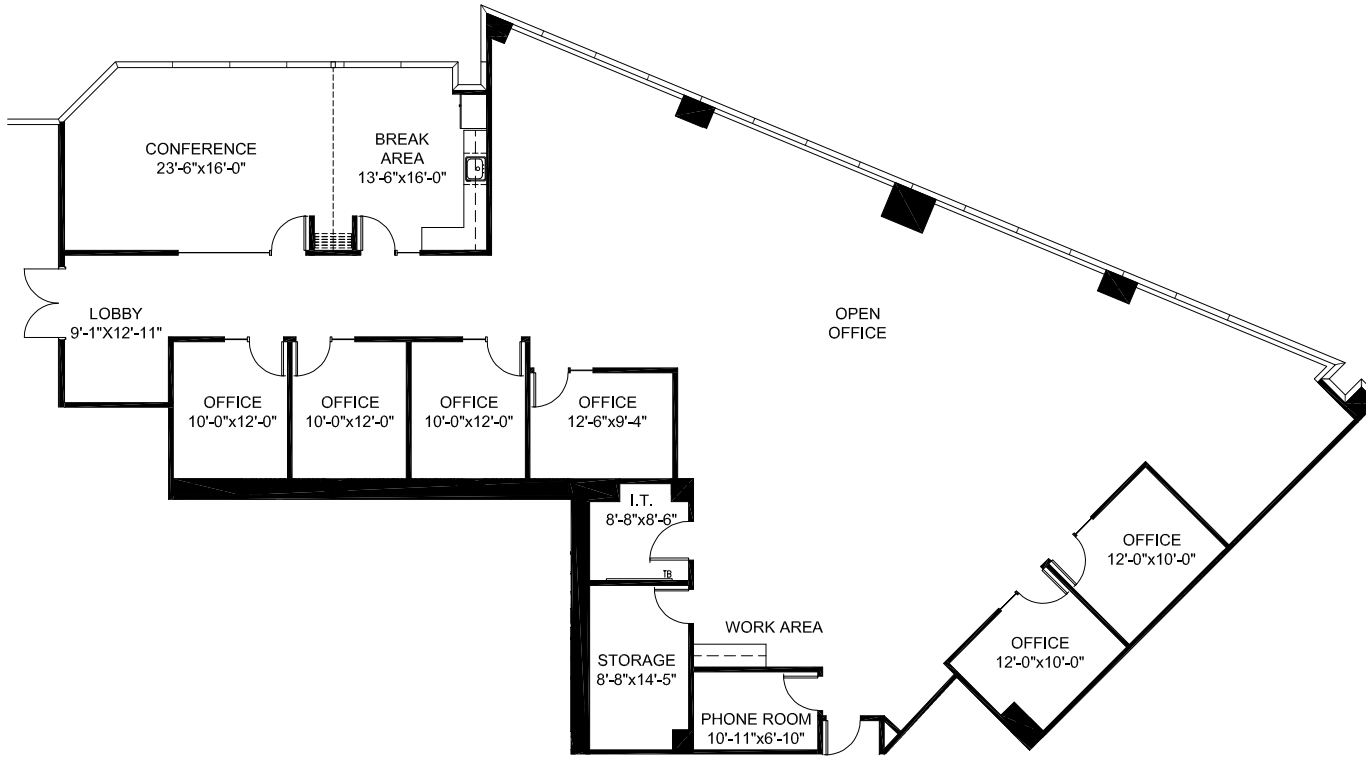
925.467.0905 | JEFF.MORGENSTERN@NMRK.COM | CA RE LICENSE #01275910

DAN WATSON EXECUTIVE VICE PRESIDENT

925.467.0903 | DAN.WATSON@NMRK.COM | CA RE LICENSE #01438710

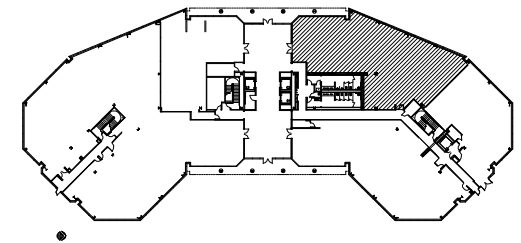
FLOOR PLANS

Available Space



**SYCAMORE
PLAZA 6801**

STE 150 / ±5,202 RSF



EXCLUSIVE AGENTS

JEFF MORGENSTERN SENIOR MANAGING DIRECTOR

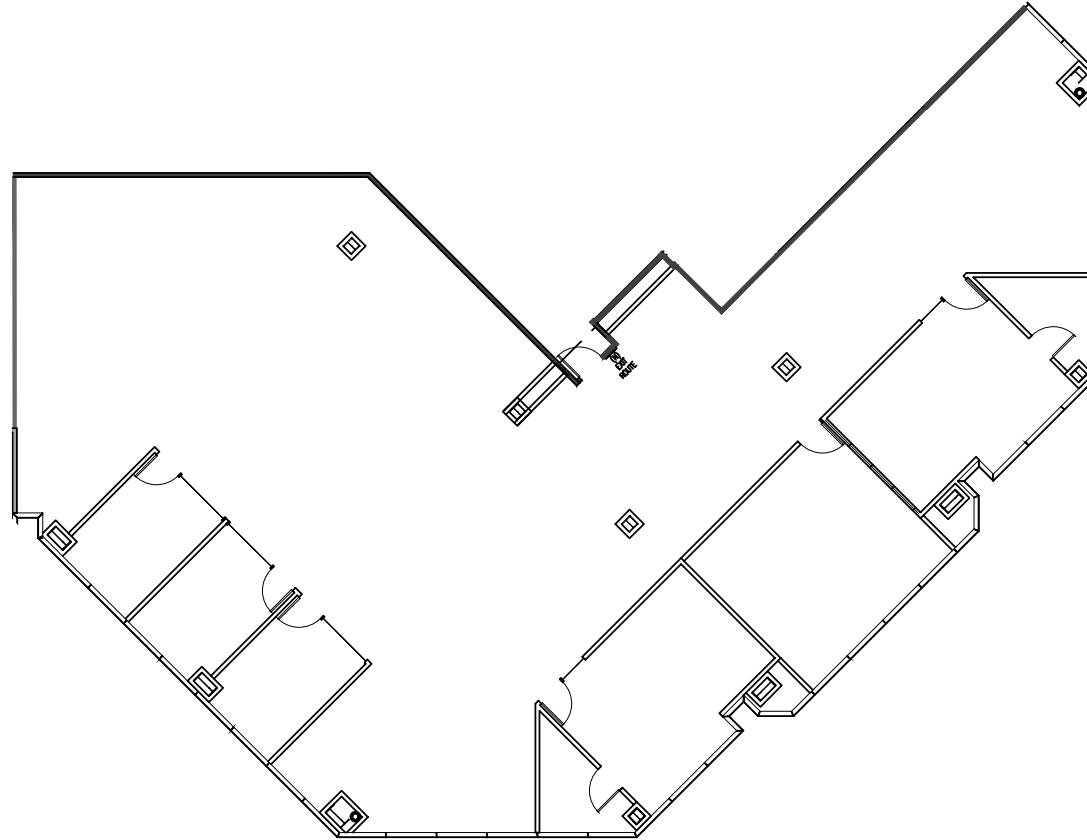
925.467.0905 | JEFF.MORGENSTERN@NMRK.COM | CA RE LICENSE #01275910

DAN WATSON EXECUTIVE VICE PRESIDENT

925.467.0903 | DAN.WATSON@NMRK.COM | CA RE LICENSE #01438710

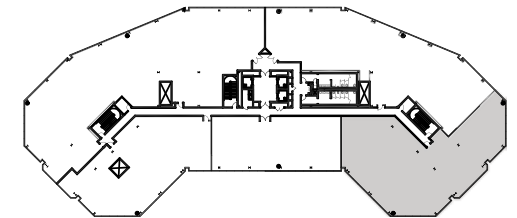
FLOOR PLANS

Available Space



**SYCAMORE
PLAZA 6701**

STE 450 / ±5,726 RSF



EXCLUSIVE AGENTS

JEFF MORGENSTERN SENIOR MANAGING DIRECTOR

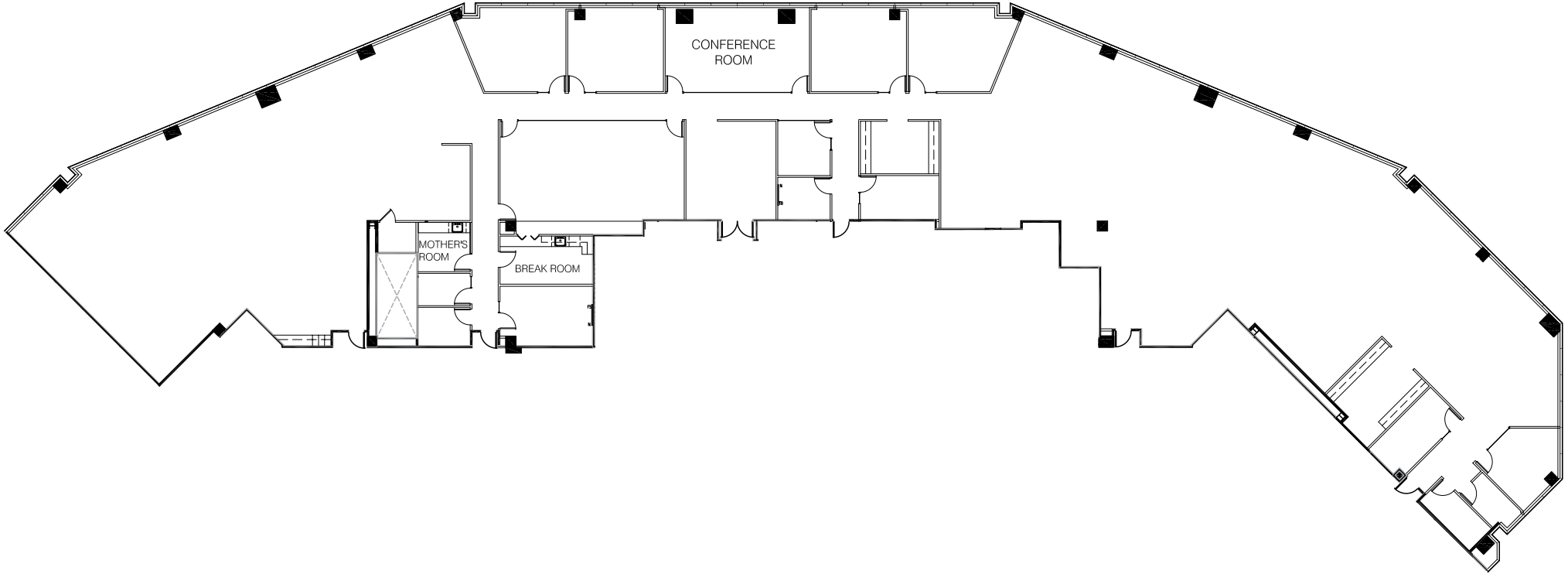
925.467.0905 | JEFF.MORGENSTERN@NMRK.COM | CA RE LICENSE #01275910

DAN WATSON EXECUTIVE VICE PRESIDENT

925.467.0903 | DAN.WATSON@NMRK.COM | CA RE LICENSE #01438710

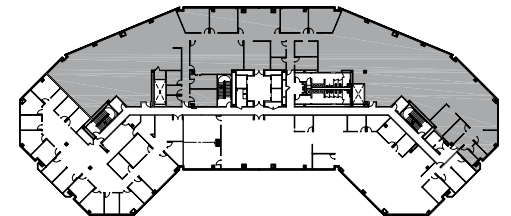
FLOOR PLANS

Available Space



**SYCAMORE
PLAZA 6801**

STE 200 / ± 16,699 RSF



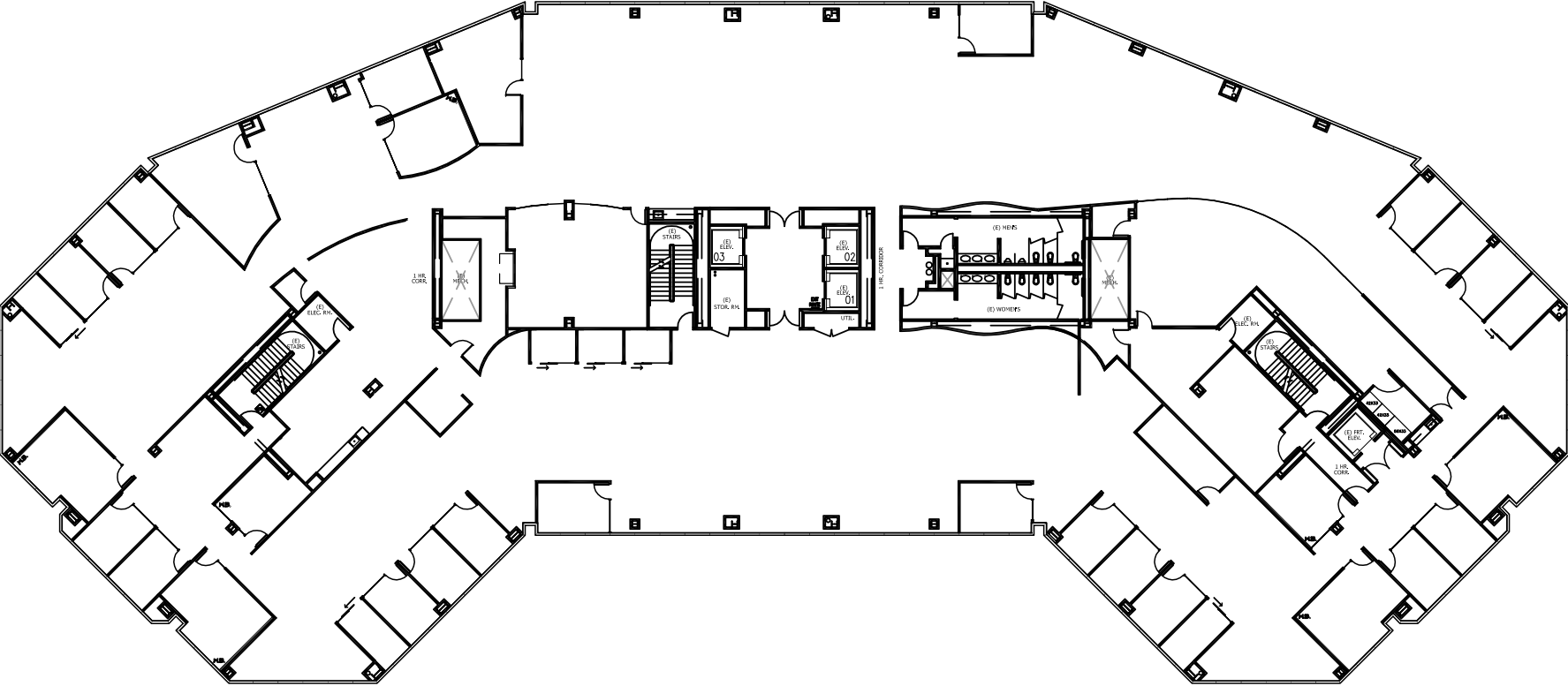
EXCLUSIVE AGENTS

JEFF MORGENSTERN SENIOR MANAGING DIRECTOR
925.467.0905 | JEFF.MORGENSTERN@NMRK.COM | CA RE LICENSE #01275910

DAN WATSON EXECUTIVE VICE PRESIDENT
925.467.0903 | DAN.WATSON@NMRK.COM | CA RE LICENSE #01438710

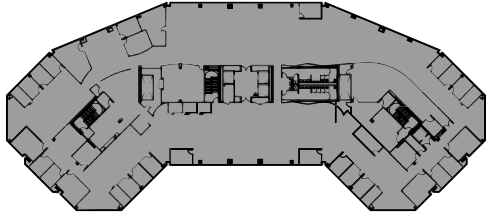
FLOOR PLANS

Available Space



SYCAMORE PLAZA 6801

STE 400 / ±32,848 RSF



EXCLUSIVE AGENTS

JEFF MORGENSTERN SENIOR MANAGING DIRECTOR
 925.467.0905 | JEFF.MORGENSTERN@NMRK.COM | CA RE LICENSE #01275910

DAN WATSON EXECUTIVE VICE PRESIDENT
 925.467.0903 | DAN.WATSON@NMRK.COM | CA RE LICENSE #01438710



KOLL CENTER PARKWAY

PLEASANTON, CA

NEWMARK

KGIP Principal®



The distributor of this communication is performing acts for which a real estate license is required. The information contained herein has been obtained from sources deemed reliable but has not been verified and no guarantee, warranty or representation, either express or implied, is made with respect to such information. Terms of sale or lease and availability are subject to change or withdrawal without notice.