

NORTHPOINT PLAZA TAYLOR & BAY

95k SQFT OFFICE/R&D CAMPUS & RETAIL CENTER
PLUS EXCLUSIVE GARAGE & SURFACE PARKING

SELLER FINANCING AVAILABLE



FOR SALE OR LEASE

Jake Levinson

415.786.4303

jake@groundmatrix.com

CalDRE #02021931

Alex Fee

209.981.7753

alex@groundmatrix.com

CalDRE #02018515



OFFICE | INDUSTRIAL | RETAIL
TEAM

FOR SALE OR LEASE



OFFICE | INDUSTRIAL | RETAIL
TEAM

NORTHPOINT PLAZA TAYLOR & BAY

95k SQFT OFFICE/R&D CAMPUS & RETAIL CENTER
PLUS EXCLUSIVE GARAGE & SURFACE PARKING



Property Highlights

- Flexible C-2 Zoning
- 65,776 SQFT of land
- Brick & Timber interior aesthetics
- 130 parking spaces (109 subterranean, 21 surface spaces) Parking garage SF (+/- 42,697) not included in the +/-95,000
- Three Loading bays with Dock-High's
- Industrial Garbage Compactor



130 PARKING
STALLS



FORMULA RETAIL
PERMITTED



SELLER FINANCING
AVAILABLE

CURRENT PROPERTY
VIDEO



RENDERING VIDEO
WALKTHROUGH



Jake Levinson

415.786.4303
jake@groundmatrix.com
CalDRE #02021931

Alex Fee

209.981.7753
alex@groundmatrix.com
CalDRE #02018515



OFFICE | INDUSTRIAL | RETAIL
TEAM

**FOR
SALE
OR
LEASE**

NORTHPOINT PLAZA TAYLOR & BAY

95k SQFT OFFICE/R&D CAMPUS & RETAIL CENTER
PLUS EXCLUSIVE GARAGE & SURFACE PARKING



OFFERING SUMMARY

Lease Rate:	Negotiable
Sale Price:	Negotiable
Building SF:	+/- 95,000 SF
*Parking Lot SF (Additional):	+/- 42,679 SF
Lot SF:	+/- 65,776 SF
Zoning:	C-2



Jake Levinson

415.786.4303
jake@groundmatrix.com
CalDRE #02021931

Alex Fee

209.981.7753
alex@groundmatrix.com
CalDRE #02018515



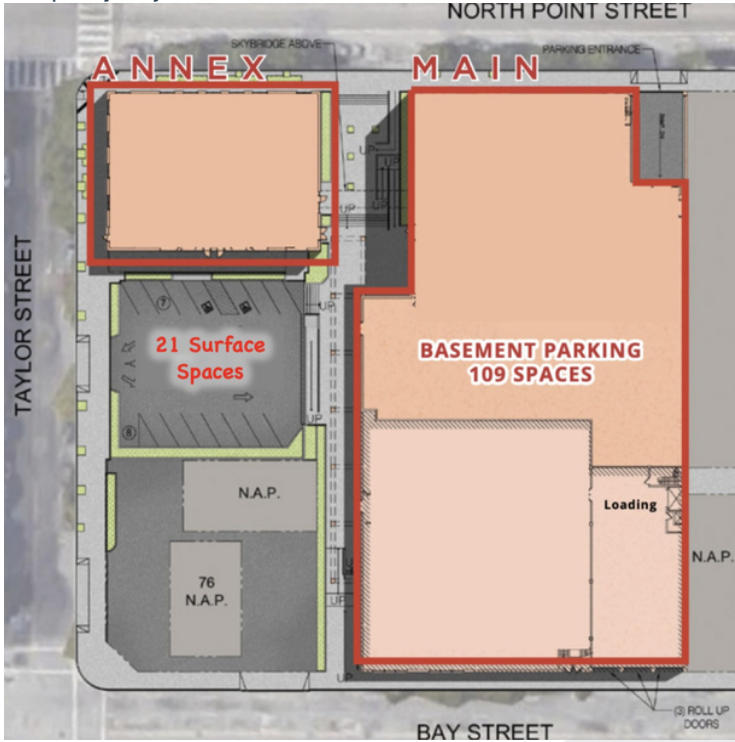
OFFICE | INDUSTRIAL | RETAIL
TEAM

**FOR
SALE
OR
LEASE**

NORTHPOINT PLAZA TAYLOR & BAY

95k SQFT OFFICE/R&D CAMPUS & RETAIL CENTER
PLUS EXCLUSIVE GARAGE & SURFACE PARKING

Property Layout



Ceiling Heights

- 2598 Taylor Street: 1st Floor: 11'13"
- 2598 Taylor Street 1st Floor Receiving: 12'11"
- 2598 Taylor Street 2nd Floor: 15'
- 455 North Point 3rd Floor: 11'9" Ceiling Height 12'
- 455 North Point 3rd Floor (Area Fronting Surface Lot): 8'3" Duct Height 8'3"
- 2552 Taylor Street (Cost Plus): 18'
- 2598 Taylor Street 1st Floor (Ross): 18' w/1' finished floor between 1st & 2nd floors.
- 2598 Taylor Street 2nd Floor (Ross): 11'

Parcel Map

ASSESSORS PARCEL NUMBER
The site has 7 parcels totaling approximately 1.51 acres or 65,776 square feet of commercially zoned land.

PARCEL #	SQFT	ACRES
0030-005	4,356	0.10
0030-009	3,485	0.08
0030-010	6,534	0.15
0030-011	10,019	0.23
0030-011A	5,227	0.12
0030-012	17,424	0.40
0030-013	18,731	0.43
Total	65,776 SF	1.51 ACRES

ZONING
The Property is zoned C-2 by the City of San Francisco and allows for general commercial.



2552 Taylor Photo

Jake Levinson

415.786.4303
jake@groundmatrix.com
CalDRE #02021931

Alex Fee

209.981.7753
alex@groundmatrix.com
CalDRE #02018515



OFFICE | INDUSTRIAL | RETAIL
TEAM

**FOR
SALE
OR
LEASE**

NORTHPOINT PLAZA TAYLOR & BAY

95k SQFT OFFICE/R&D CAMPUS & RETAIL CENTER
PLUS EXCLUSIVE GARAGE & SURFACE PARKING



2552 Taylor Photos



Skyline

Jake Levinson
415.786.4303
jake@groundmatrix.com
CalDRE #02021931

Alex Fee
209.981.7753
alex@groundmatrix.com
CalDRE #02018515



OFFICE | INDUSTRIAL | RETAIL
TEAM

**FOR
SALE
OR
LEASE**

NORTHPOINT PLAZA TAYLOR & BAY

95k SQFT OFFICE/R&D CAMPUS & RETAIL CENTER
PLUS EXCLUSIVE GARAGE & SURFACE PARKING



2552 Taylor



2552 Taylor

Jake Levinson

415.786.4303
jake@groundmatrix.com
CalDRE #02021931

Alex Fee

209.981.7753
alex@groundmatrix.com
CalDRE #02018515



OFFICE | INDUSTRIAL | RETAIL
TEAM

**FOR
SALE
OR
LEASE**

NORTHPOINT PLAZA TAYLOR & BAY

95k SQFT OFFICE/R&D CAMPUS & RETAIL CENTER
PLUS EXCLUSIVE GARAGE & SURFACE PARKING



Annex Building (2598 Taylor)



Annex Building (2598 Taylor)

Jake Levinson

415.786.4303
jake@groundmatrix.com
CalDRE #02021931

Alex Fee

209.981.7753
alex@groundmatrix.com
CalDRE #02018515

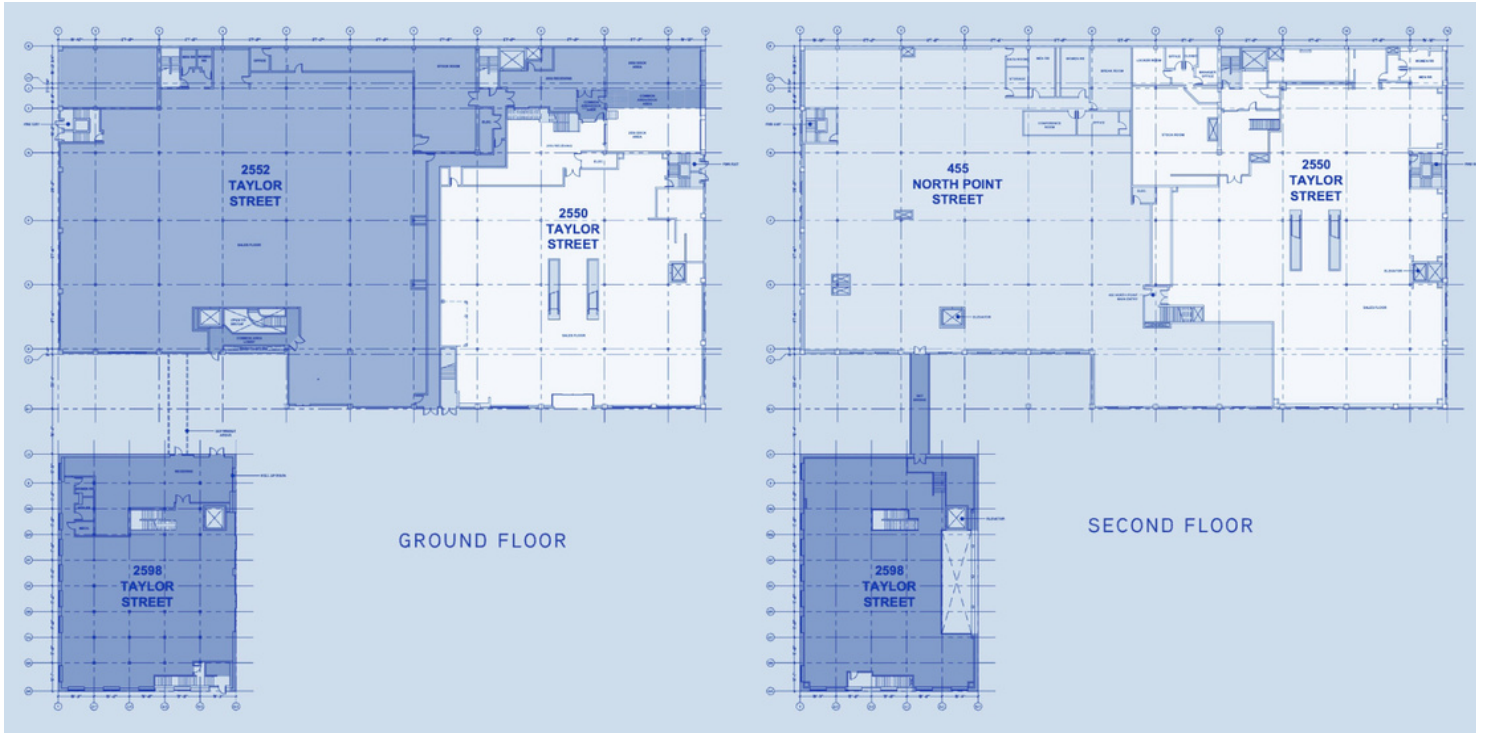


OFFICE | INDUSTRIAL | RETAIL
TEAM

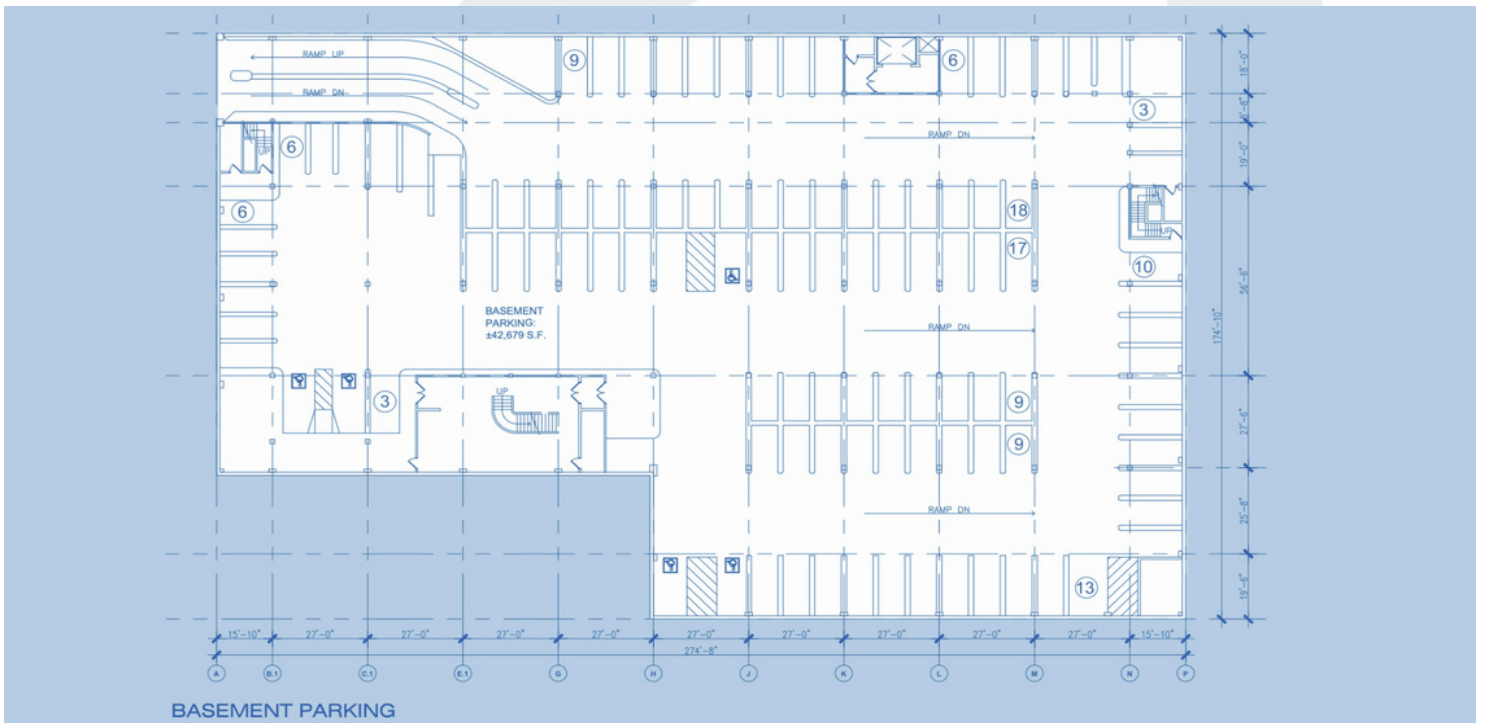
**FOR
SALE
OR
LEASE**

NORTHPOINT PLAZA TAYLOR & BAY

95k SQFT OFFICE/R&D CAMPUS & RETAIL CENTER
PLUS EXCLUSIVE GARAGE & SURFACE PARKING



Floor Plans



Floor Plans

Jake Levinson

415.786.4303
jake@groundmatrix.com
CalDRE #02021931

Alex Fee

209.981.7753
alex@groundmatrix.com
CalDRE #02018515



OFFICE | INDUSTRIAL | RETAIL
TEAM

**FOR
SALE
OR
LEASE**

NORTHPOINT PLAZA TAYLOR & BAY

95K SQFT OFFICE/R&D CAMPUS & RETAIL CENTER
PLUS EXCLUSIVE GARAGE & SURFACE PARKING



Jake Levinson

415.786.4303
jake@groundmatrix.com
CalDRE #02021931

Alex Fee

209.981.7753
alex@groundmatrix.com
CalDRE #02018515

Retailer Map



OFFICE | INDUSTRIAL | RETAIL
TEAM

NORTHPOINT PLAZA
TAYLOR & BAY
95k SQFT OFFICE/R&D CAMPUS & RETAIL CENTER
PLUS EXCLUSIVE GARAGE & SURFACE PARKING

**FOR SALE
OR LEASE**



OFFICE | INDUSTRIAL | RETAIL
TEAM

**CONTACT
INFORMATION**

Jake Levinson
Jake@groundmatrix.com
(415) 786-4303

**CONTACT
INFORMATION**

Alex Fee
Alex@groundmatrix.com
(209) 981-7753