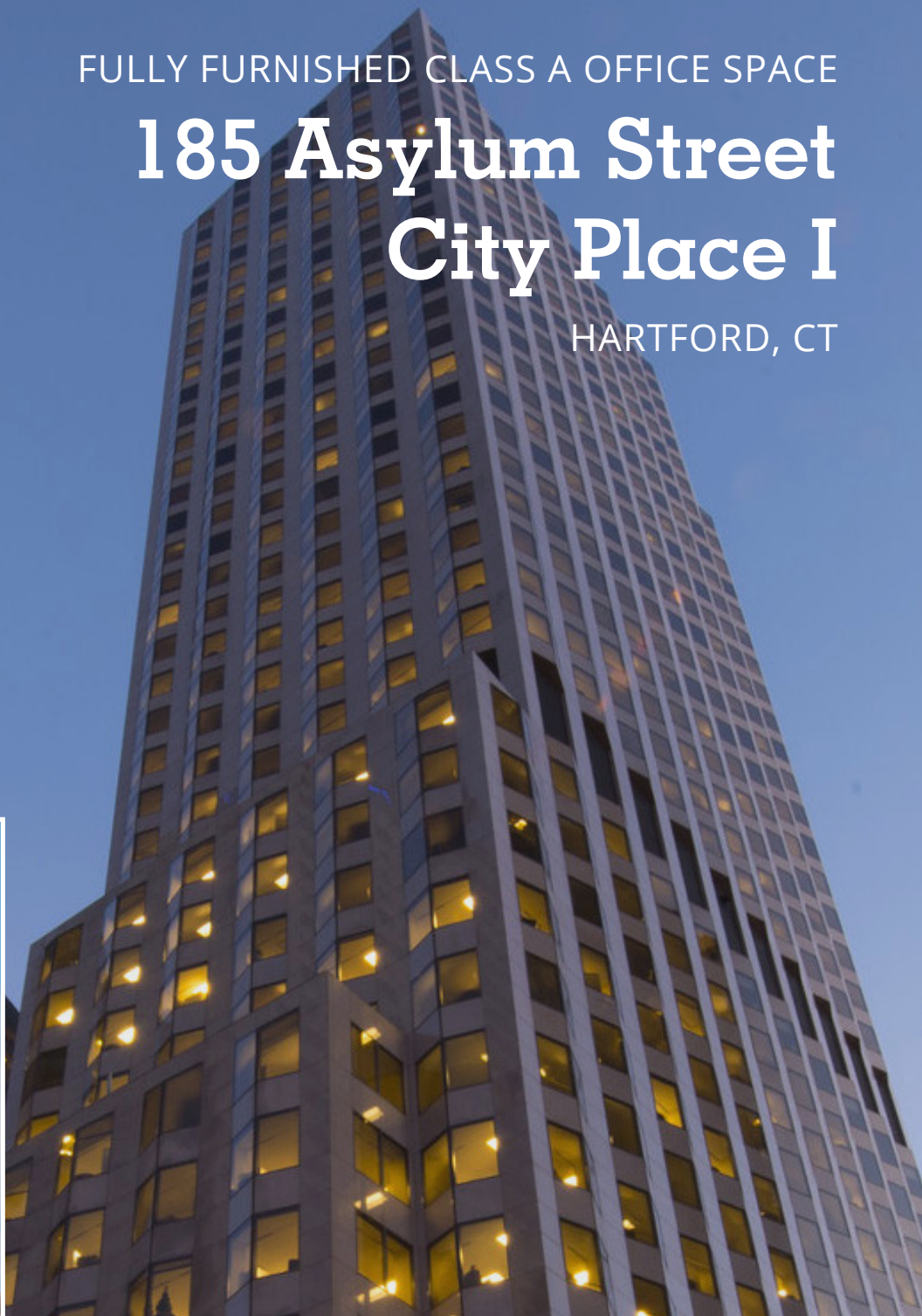


**AVISON
YOUNG**

FULLY FURNISHED CLASS A OFFICE SPACE

185 Asylum Street City Place I

HARTFORD, CT

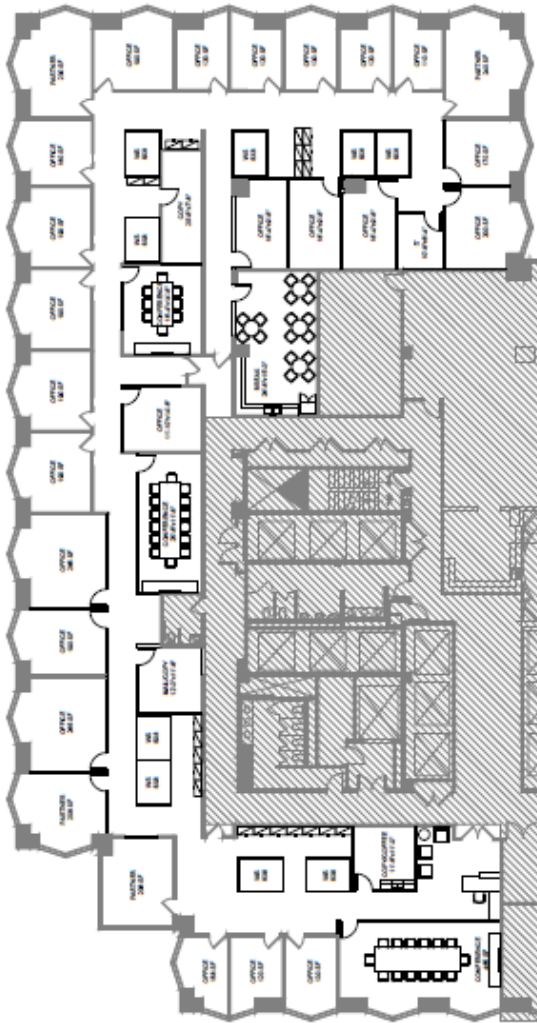


AVAILABLE FOR SUBLEASE

- 26th Floor: 12,800 RSF
- Elevator lobby exposure
- Term expires: January 31, 2031
- Fully furnished

185 Asylum Street City Place I

HARTFORD, CT



PROPERTY FEATURES

- 26th floor: 12,800 RSF
- Fully furnished
- Term expires: January 31st, 2031
- Starbucks and Max Downtown in building's main lobby
- Located in Hartford with easy access to both interstates 84 and 91 and Route 2
- Walking distance to numerous retail storefronts, restaurants and hotels
- Fitness center, dry cleaner and convenience store on-site
- On-site parking available

For further information, please contact:

Andrew Filler, Principal

+1 860 327 8302

andrew.filler@avisonyoung.com

225 Asylum Street, 16th Floor

Hartford, CT 06103

Maury Smith, Principal

+1 860 327 8304

maury.smith@avisonyoung.com

225 Asylum Street, 16th Floor

Hartford, CT 06103