



Sublease Available

718 S. State Street

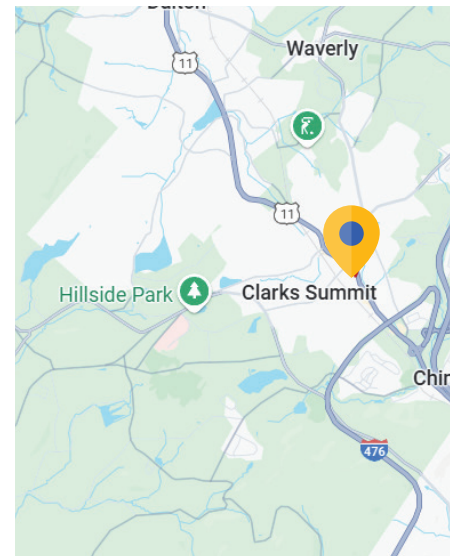
Clarks Summit, PA

Overview

Building:	718 S. State Street, Clarks Summit, PA
Premises:	3,700 SF: First Floor
Term:	Through 5/1/2027
Available:	Immediately
Rental Rate:	\$12.50 SF (Gross)
Parking:	46 surface spaces

Space Specs

- Furniture is available
- Directly off Route 11, and close to I-81 and I-476
- Nearby to restaurants & shopping centers
- Large employee base nearby
- Private entrance
- A nicely maintained building, with landscaping and private on-site parking
- Training room, break room/kitchen, in-suite restrooms, closet spaces & conference areas included



For more information:

Drew Butera
 267.500.7820 mobile
 dbutera@cresa.com

Cresa
 1 Fayette Street, Suite 100
 Conshohocken, PA 19428
 cresa.com/conshohocken-pa

Sublease Available

cresa

718 S. State Street

Office Interior

Clarks Summit, PA



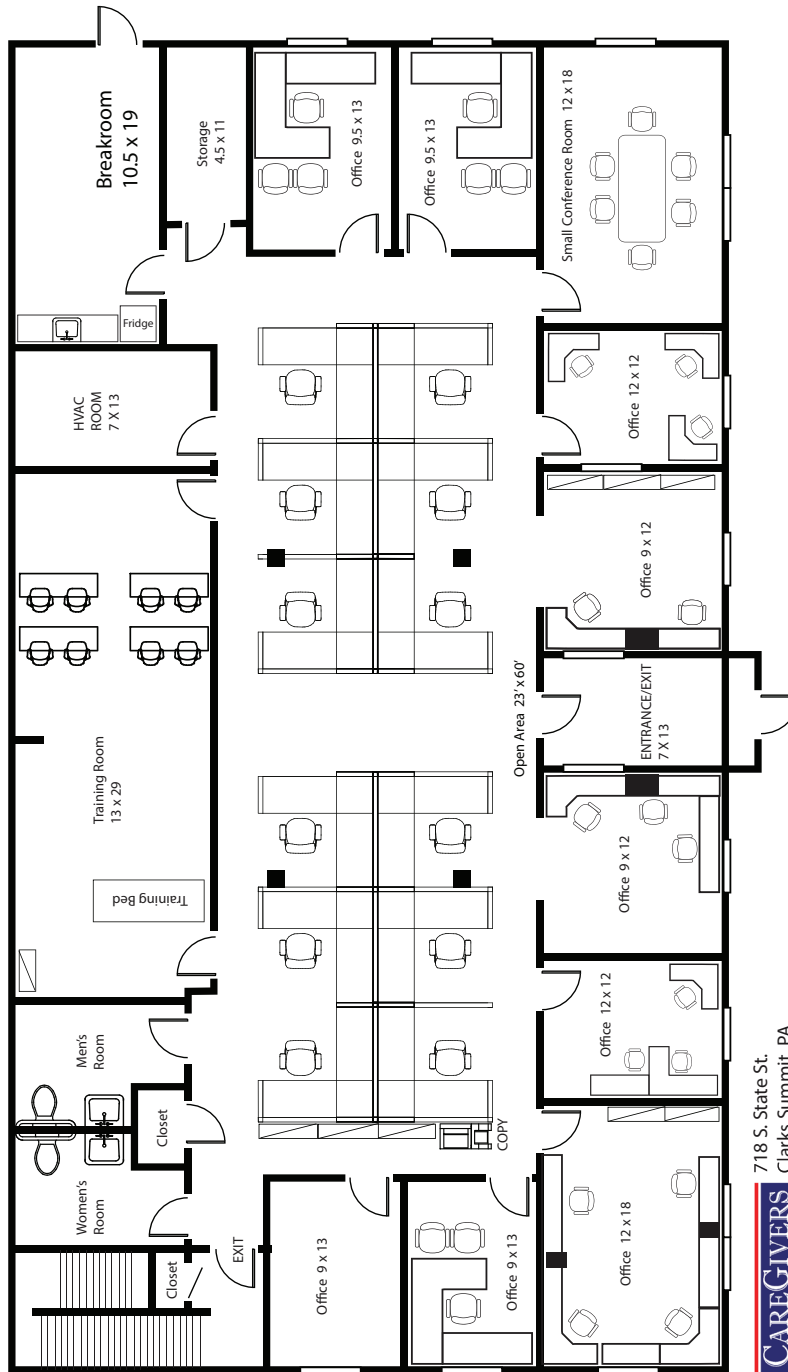
Sublease Available

cresa

718 S. State Street

Floorplan

Clarks Summit, PA



718 S. State St.
Clarks Summit, PA

CAREGIVERS
AMERICA
a modivcare service

LOWER LEVEL FLOOR PLAN
APPROX. 3,700 sqft

Cresa © 2024. All rights reserved. The information contained in this document has been obtained from sources believed reliable. While Cresa does not doubt its accuracy, Cresa has not verified it and makes no guarantee, warranty, or representation about it. It is your responsibility to independently confirm its accuracy and completeness. Any projections, opinions, assumptions or estimates used are for example only and do not represent the current or future performance of the property. The value of this transaction to you depends on tax and other factors which should be evaluated by your tax, financial and legal advisors. You and your advisors should conduct a careful, independent investigation of the property to determine to your satisfaction the suitability of the property for your needs.