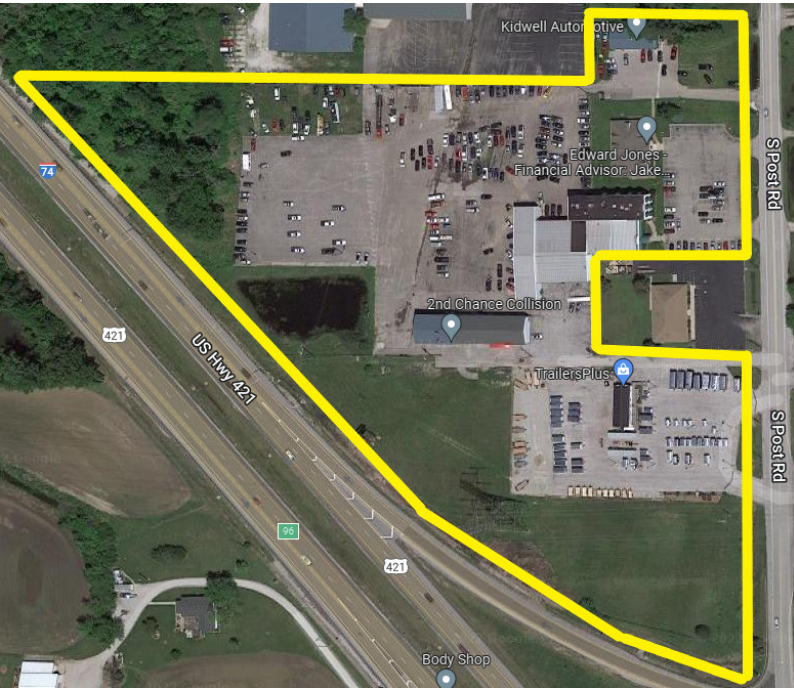


3416-3520 S. POST RD.

Indianapolis, IN 46239

FOR SALE



PROPERTY HIGHLIGHTS

- Several parcels, which can be subdivided
- Approx. 12 AC total
- Additional +/- 4 AC zoned (C-7) acceptable for Retail/Gas/Convenience
- Easy access to I-74

OFFERING SUMMARY

| | |
|----------------|-----------------------|
| Sale Price: | Negotiable |
| Total Acreage: | 12.13 Acres |
| # of Parcels: | 4 - can be subdivided |
| Acreage Range: | 0.73 AC - 7.4 AC |

TOM FERGUSON

O: 317.454.7171 | C: 317.714.7171
tferguson@premiercres.com

STEVE MONNOT

O: 317.454.7171 | C: 260.444.7194
smonnot@premiercres.com

3416-3520 S. POST RD.

Indianapolis, IN 46239

FOR SALE



PROPERTY DESCRIPTION

Land with multiple commercial buildings located with frontage on Interstate 74 on the near-southeast side of Indianapolis, IN. Approximately 12 acres total. Existing Office/Warehouse space in 5 total buildings on the property, with large concrete parking area suitable for cars & trucks.

LOCATION DESCRIPTION

Investors will appreciate the area's proximity to major transportation routes and the strong local economy. With its strategic location and access to a growing consumer base, the property presents a unique opportunity for investors looking to capitalize on Indianapolis's dynamic market.

TOM FERGUSON

O: 317.454.7171 | C: 317.714.7171
tferguson@premiercres.com

STEVE MONNOT

O: 317.454.7171 | C: 260.444.7194
smonnot@premiercres.com

3416-3520 S. POST RD.

Indianapolis, IN 46239

FOR SALE



TOM FERGUSON

O: 317.454.7171 | C: 317.714.7171
tferguson@premiercres.com

STEVE MONNOT

O: 317.454.7171 | C: 260.444.7194
smonnot@premiercres.com