



47,000 Sq. Ft. For Lease

26575 Northline Rd, Taylor, MI 48180



Listing ID:
 Status: Active
 Property Type: Industrial For Lease
 Industrial Type: Flex Space, Industrial-Business Park
 Contiguous Space: 47,000 SF
 Total Available: 47,000 SF
 Lease Rate: 6.50
 Base Monthly Rent:
 Lease Type: Modified Gross
 Ceiling: 18 - 20 ft.
 Office SF: 4,600
 Drive-In Bays: 1 Bay, 2 Truck Wells



Overview/Comments

47,000 sq.ft. of light industrial for lease. Air conditioned warehouse.
 Call Rea Construction at 734-946-8730 for a tour. 1 Mile From Detroit Metropolitan Airport.

Virtual Tour

<https://view.ricoh360.com/98110757-6e6a-4d5-bfaa-b2da6fc2ff6f>

[Flyover https://youtu.be/y1V-AHG6r7w](https://youtu.be/y1V-AHG6r7w)

General Information

Tax ID/APN:	263960770	Building Name:	26575 Northline
Industrial Type:	Flex Space, Industrial-Business Park, Manufacturing, Mixed Use, Light Industrial, Self Storage, Warehouse/Distribution	Gross Building Area:	47,000 SF
Zoning:	LIGHT INDUSTRIAL	Building/Unit Size (RSF):	47,000 SF
		Usable Size (USF):	47,000 SF
		Land Area:	3.51 Acres

Available Space

Suite/Unit Number:	26575	Rent Escalators:	Fixed Lease
Space Available:	47,000 SF	Offices:	9
Minimum Divisible:	47,000 SF	Office SF:	4,600
Maximum Contiguous:	47,000 SF	Parking Spaces:	110
Space Type:	Relet	Drive In Bays:	1
Date Available:	11/1/2023	Ceiling Height:	20
Lease Rate:	6.50	Clear Height:	18
Lease Type:	Modified Gross		

Area & Location

Property Located Between: Beech Daly and Lang
 Highway Access: I94
 Airports: Detroit Metropolitan

Building Related

Total Number of Buildings:	1	Parking Type:	Surface
Number of Stories:	1	Total Parking Spaces:	110
Office Space SF:	4600 SF	Column Spacing:	50
Property Condition:	Good	Passenger Elevators:	0
Year Built:	1989	Freight Elevators:	0
Year Renovated:	2014	Amps:	480 Heavy Power
Roof Type:	Flat	Volts:	
Construction/Siding:	Brick	X-Phase:	3
Parking Ratio:	1.6 (per 1000 SF)	Heat Type:	Natural Gas

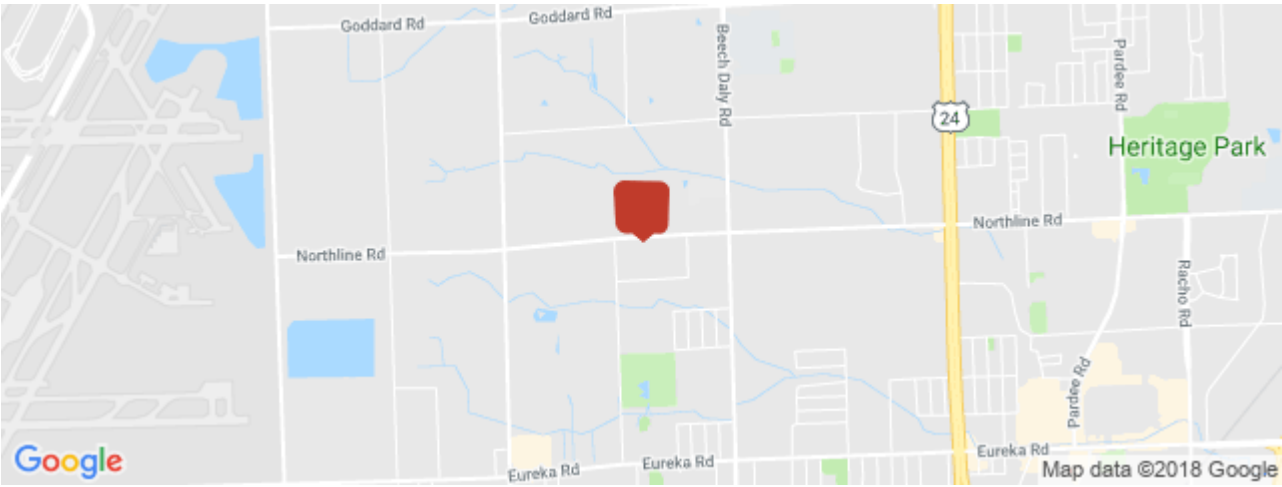
Lighting: T-8
Internet Access: Cable

Land Related

Water Service: Municipal
Sewer Type: Municipal

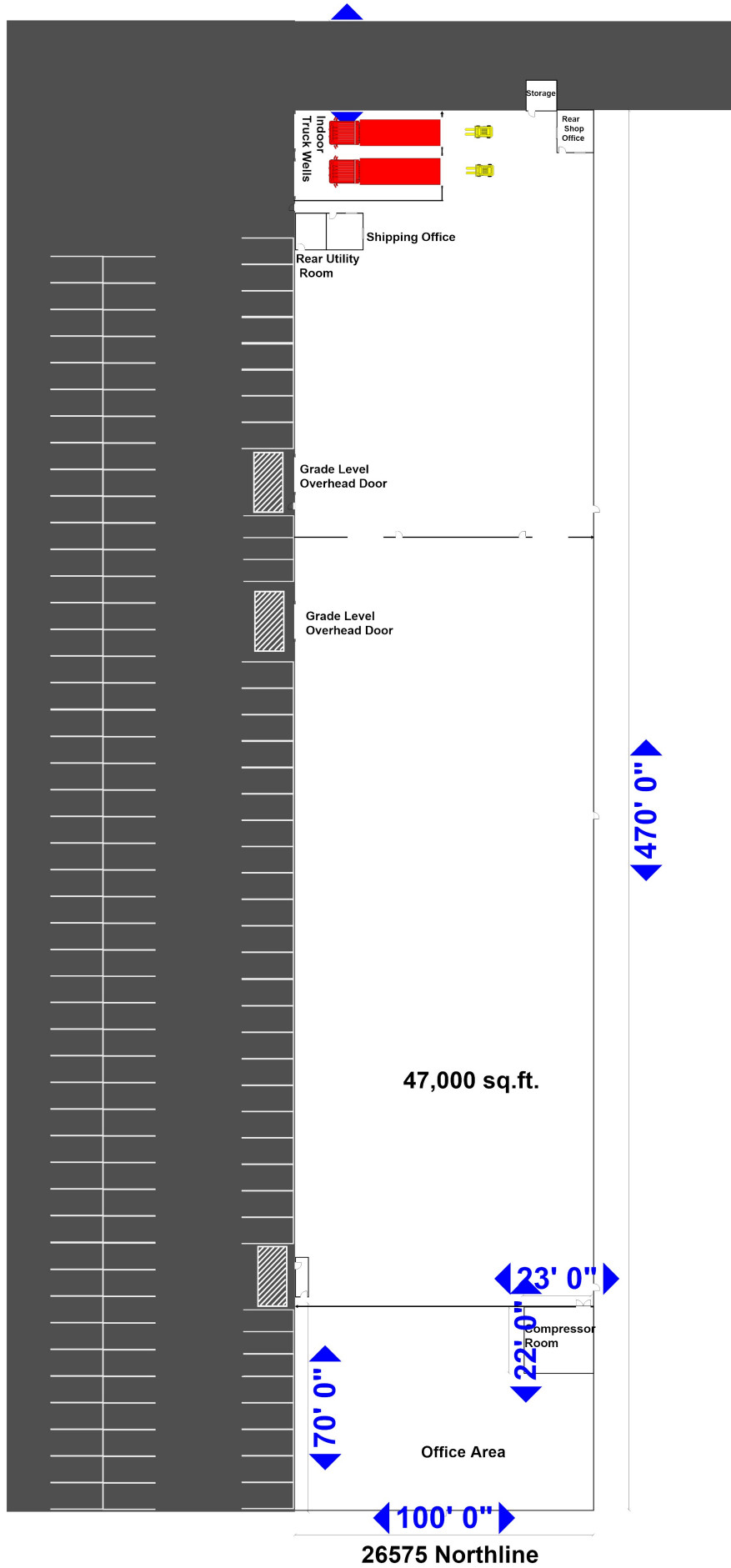
Location

Address: 26575 Northline Rd, Taylor, MI 48180 MSA: Detroit-Warren-Dearborn
County: Wayne Submarket: Airport District



Property Images

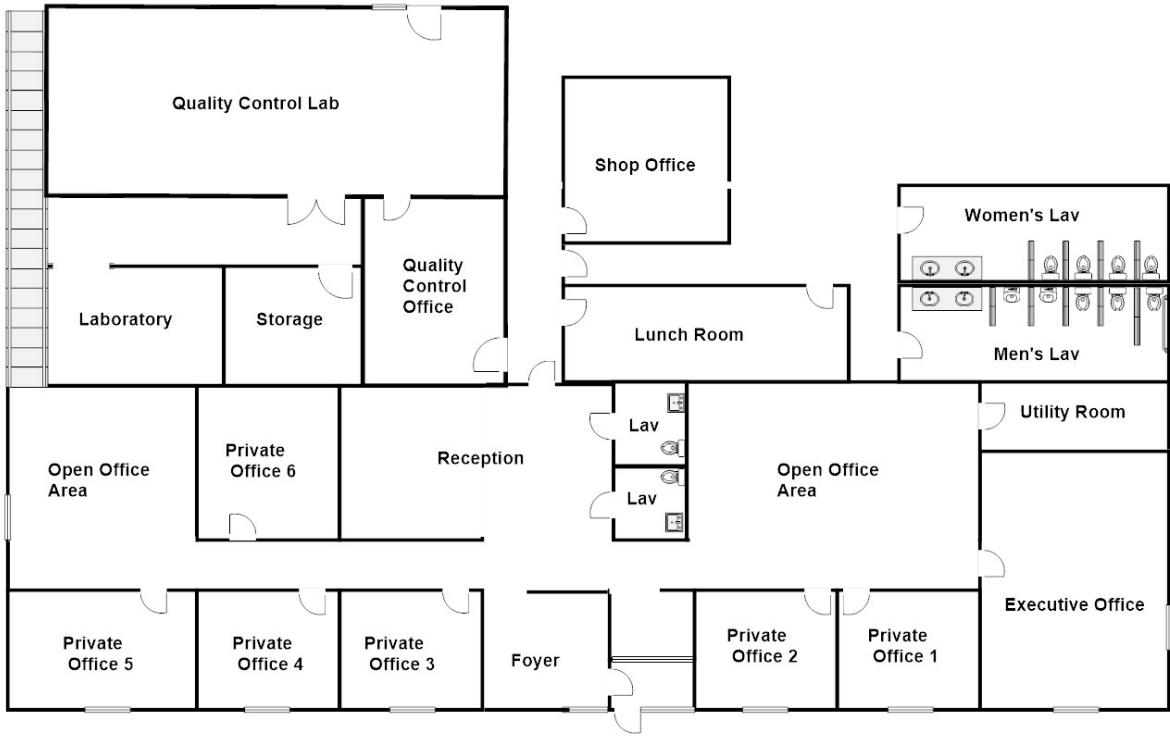




100' 0"

70' 0"

Stairs to Upper
Conference Room



**Salvatore
Giordano**
734-946-8730