

18263 Ten Mile Rd

Roseville, MI

- Premier Eastside Six Building Professional Office Campus
- Existing 4 Exam Rooms
- Located Seconds from I-94 & I-696
- Professional On-Site Management
- Many Common Area Upgrades Completed, Including New Parking Lot, Enhanced Landscaping & Common Restroom Remodeling

OFFICE BUILDING FOR LEASE

FOR MORE INFORMATION:

Al Iafrate, SIOR
Senior Vice President
248.637.7791
aiafrate@LMCap.com

248.637.9700 | LMCap.com



L. MASON CAPITANI

CORFAC INTERNATIONAL

CELEBRATING 60 YEARS

18263 Ten Mile Rd

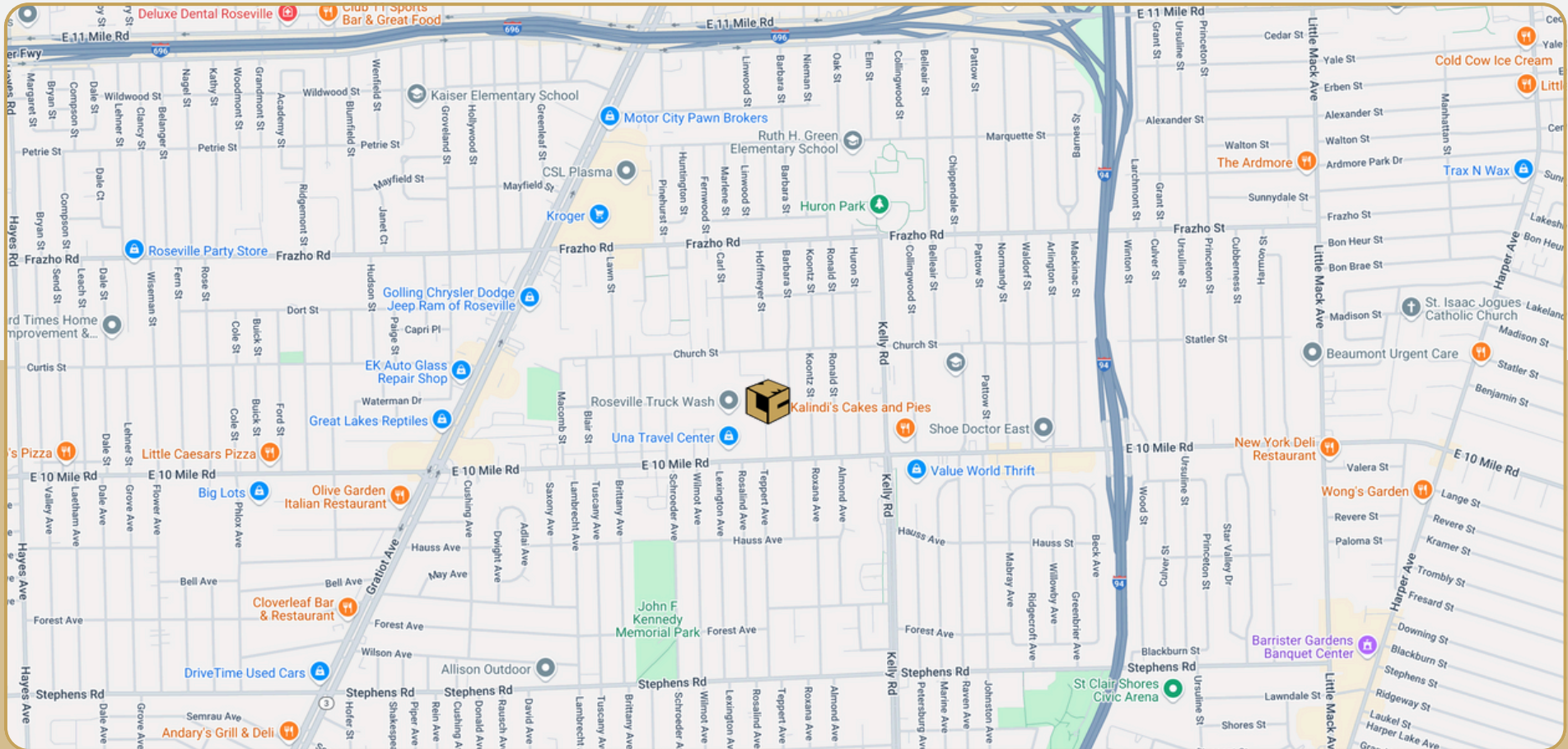
Roseville, MI



L. MASON CAPITANI

CORFAC INTERNATIONAL

CELEBRATING 60 YEARS



248.637.9700 | LMCap.com

18263 Ten Mile Rd

Roseville, MI



L. MASON CAPITANI

CORFAC INTERNATIONAL

CELEBRATING 60 YEARS

Office Property Details:

Details:

Location Description: 10 Mile/Kelly Rd

Building Type: Office/Med

Class: B

Zoning: O-1

Floors: 1

Year Built: 1989

Gross SF: 99,890 SF

Total Rentable SF: 99,890 SF

Available SF: 1,649 SF

Min/Max SF: 1,649 SF

Multitenant: Yes

Property Description: Six building professional office campus. Existing 4 medical exam suite for lease. Professional on-site management, many upgrades completed including new parking lot, enhanced landscaping & common restroom remodeling.

Economic

Proposed Medical Rental Rate: \$23.75/SF

Rental Terms: + Utilities

Annual Escalations: \$0.50/SF

Load Factor: 12.0%

Occupancy: Immediate

Parking: Excellent

Partition Allowance: Negotiable

Signage: Yes

Status: Existing

18263 Ten Mile Rd

Roseville, MI

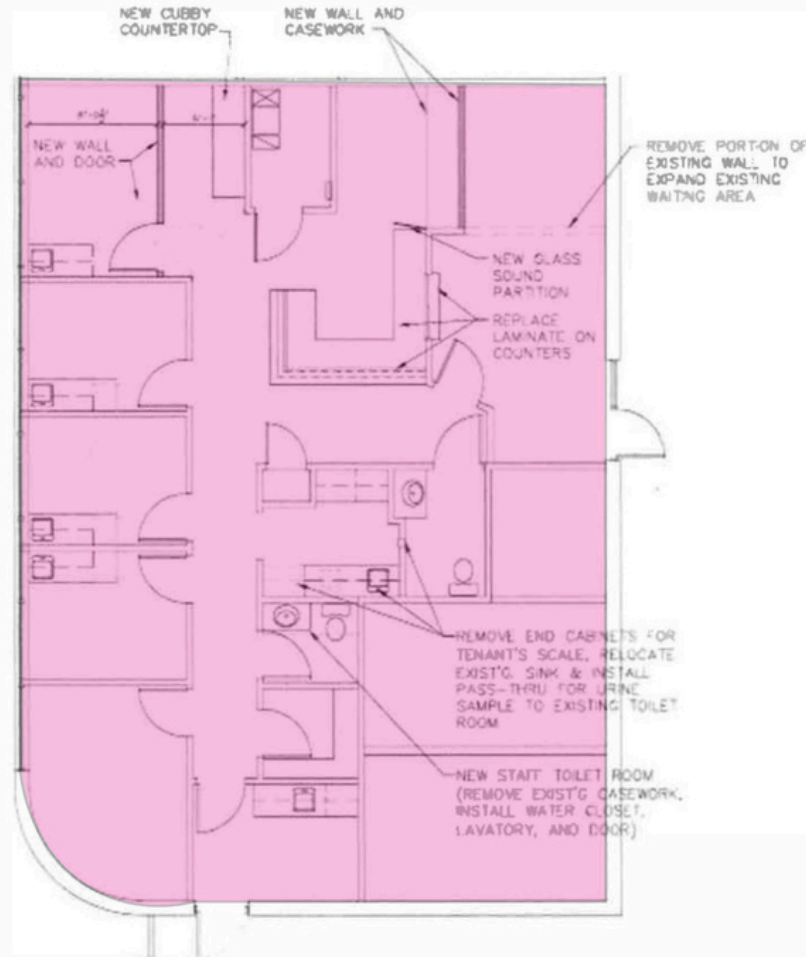


L. MASON CAPITANI

CORFAC INTERNATIONAL

CELEBRATING 60 YEARS

Unit 17 Floor Plan



Suite Number	Square Footage
17	1,649 SF

18263 Ten Mile Rd

Roseville, MI



L. MASON CAPITANI

CORFAC INTERNATIONAL

CELEBRATING 60 YEARS

Site Plan

