

PROPERTY DETAILS

- Concrete Manufacturing Batch Plant
- Total Land Size: ±151,851 SF
- ±64,731 SF Vacant
±87,120 SF Leased
- Zoning: IDM
- APN: 8760-028-001
- Fenced and Secure Yard

LOCAL EXPERTISE. INTERNATIONAL REACH. WORLD CLASS.

Brandon Carrillo

Cal DRE# 01745362

P: +1(562) 354-2510

E: bcarrillo@leelalb.com

Garrett Massaro, SIOR

Cal DRE# 01771471

P: +1(562) 354-2516

E: gmassaro@leelalb.com

Copyright © Lee & Associates. All rights reserved. No part of this work may be reproduced or distributed without written permission of the copyright owner. The information contained in this report was gathered by Lee & Associates from sources believed to be reliable. Lee & Associates, however, makes no representation concerning the accuracy or completeness of such information and expressly disclaims any responsibility for any inaccuracy contained herein.



SALE DETAILS

- **Price:** Submit Best Offer
- ±64,731 SF Vacant / ±87,120 SF Leased
- ±87,120 SF Land leased Long Term'
- Contact Broker for Lease Info
- Future Development Site
- Easy Access to CA-60 Highway
- Buyer can Move onto ±1.49 Acres or Lease It to

LOCAL EXPERTISE. INTERNATIONAL REACH. WORLD CLASS.

Brandon Carrillo

Cal DRE# 01745362

P: +1(562) 354-2510

E: bcarrillo@leelalb.com

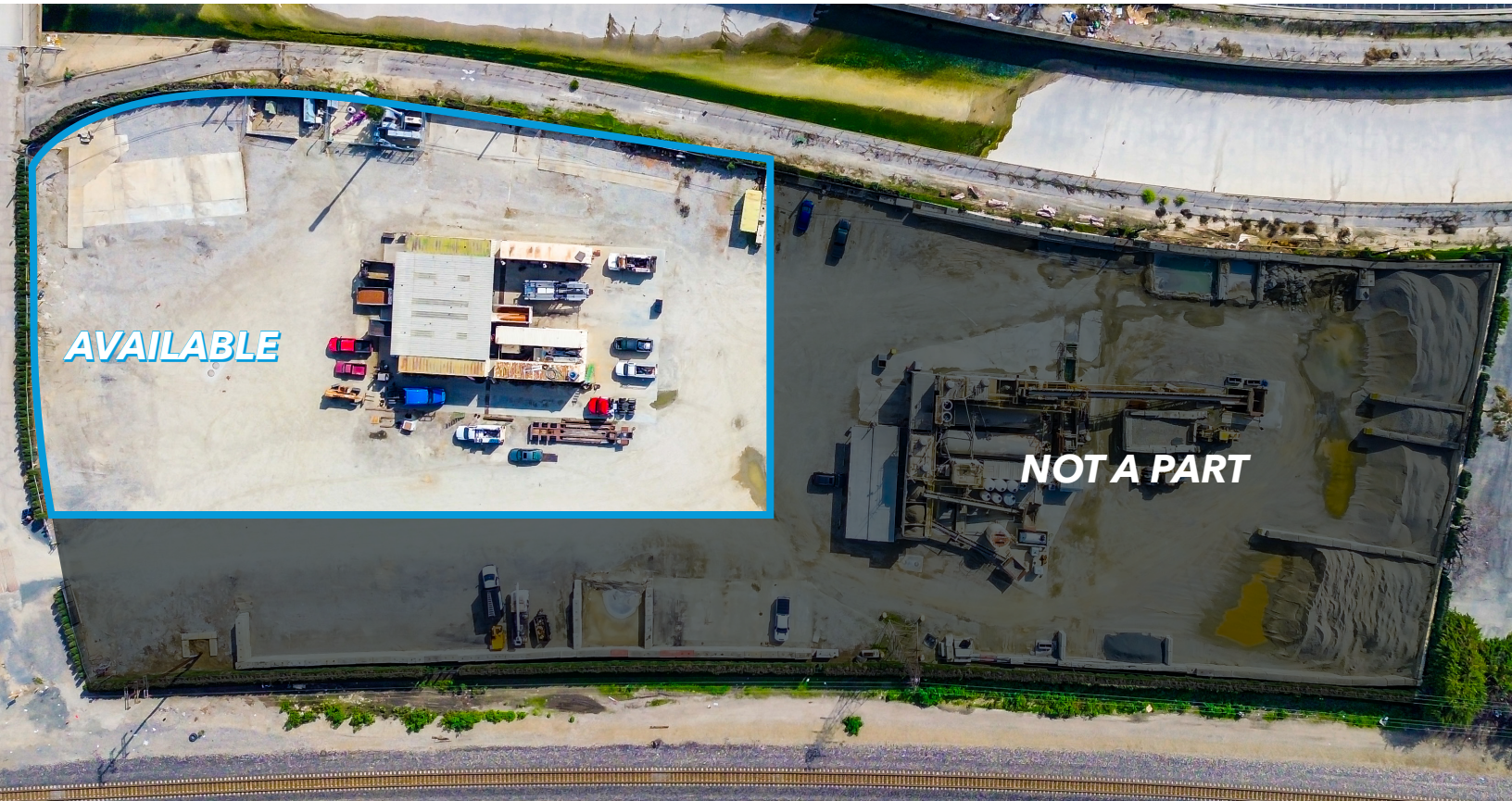
Garrett Massaro, SIOR

Cal DRE# 01771471

P: +1(562) 354-2516

E: gmassaro@leelalb.com

Copyright © Lee & Associates. All rights reserved. No part of this work may be reproduced or distributed without written permission of the copyright owner. The information contained in this report was gathered by Lee & Associates from sources believed to be reliable. Lee & Associates, however, makes no representation concerning the accuracy or completeness of such information and expressly disclaims any responsibility for any inaccuracy contained herein.



LEASE DETAILS

- ± 64,731 SF Available
- **Lease Rate:** \$0.50 / Land SF Gross (\$32,365 per Month)
- Shared Site with Concrete Batch Plant
- Concrete Batch Plant Uses Approved By Landlord
- Prime City of Industry Location
- Great Access to Major Freeways

LOCAL EXPERTISE. INTERNATIONAL REACH. WORLD CLASS.

Brandon Carrillo

Cal DRE# 01745362

P: +1(562) 354-2510

E: bcarrillo@leelalb.com

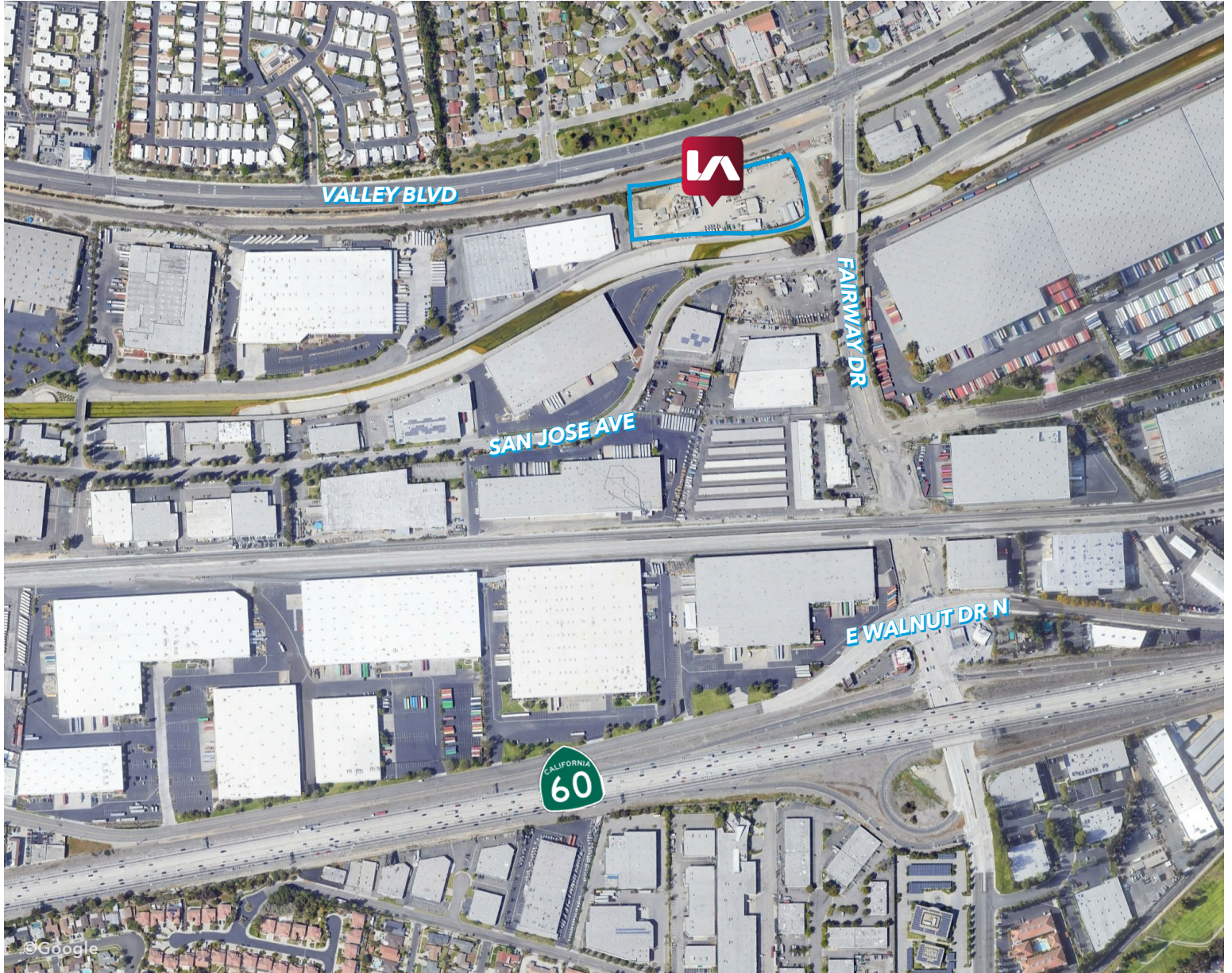
Garrett Massaro, SIOR

Cal DRE# 01771471

P: +1(562) 354-2516

E: gmassaro@leelalb.com

Copyright © Lee & Associates. All rights reserved. No part of this work may be reproduced or distributed without written permission of the copyright owner. The information contained in this report was gathered by Lee & Associates from sources believed to be reliable. Lee & Associates, however, makes no representation concerning the accuracy or completeness of such information and expressly disclaims any responsibility for any inaccuracy contained herein.



LOCAL EXPERTISE. INTERNATIONAL REACH. WORLD CLASS.

Brandon Carrillo

Cal DRE# 01745362

P: +1(562) 354-2510

E: bcarrillo@leelalb.com

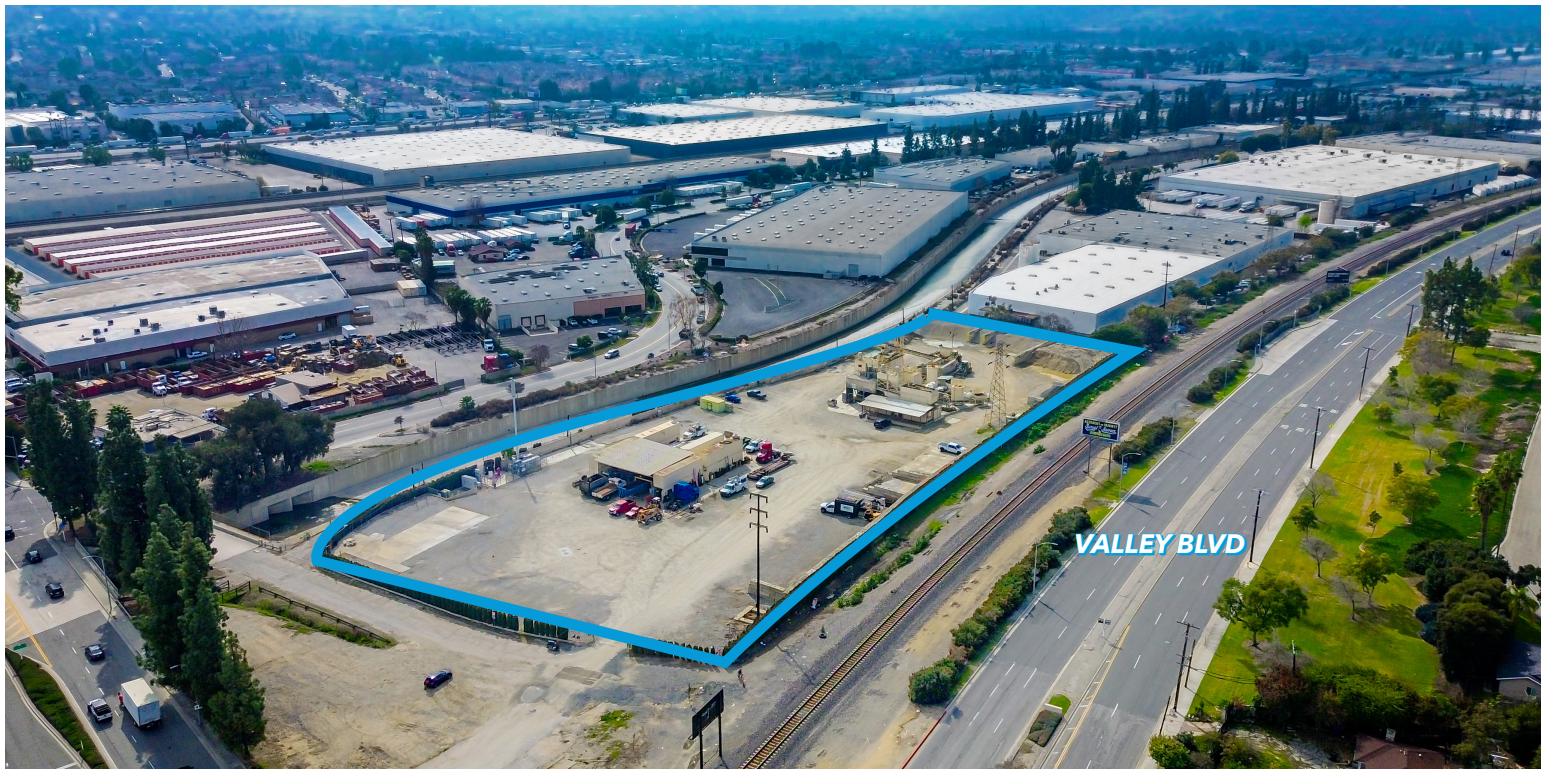
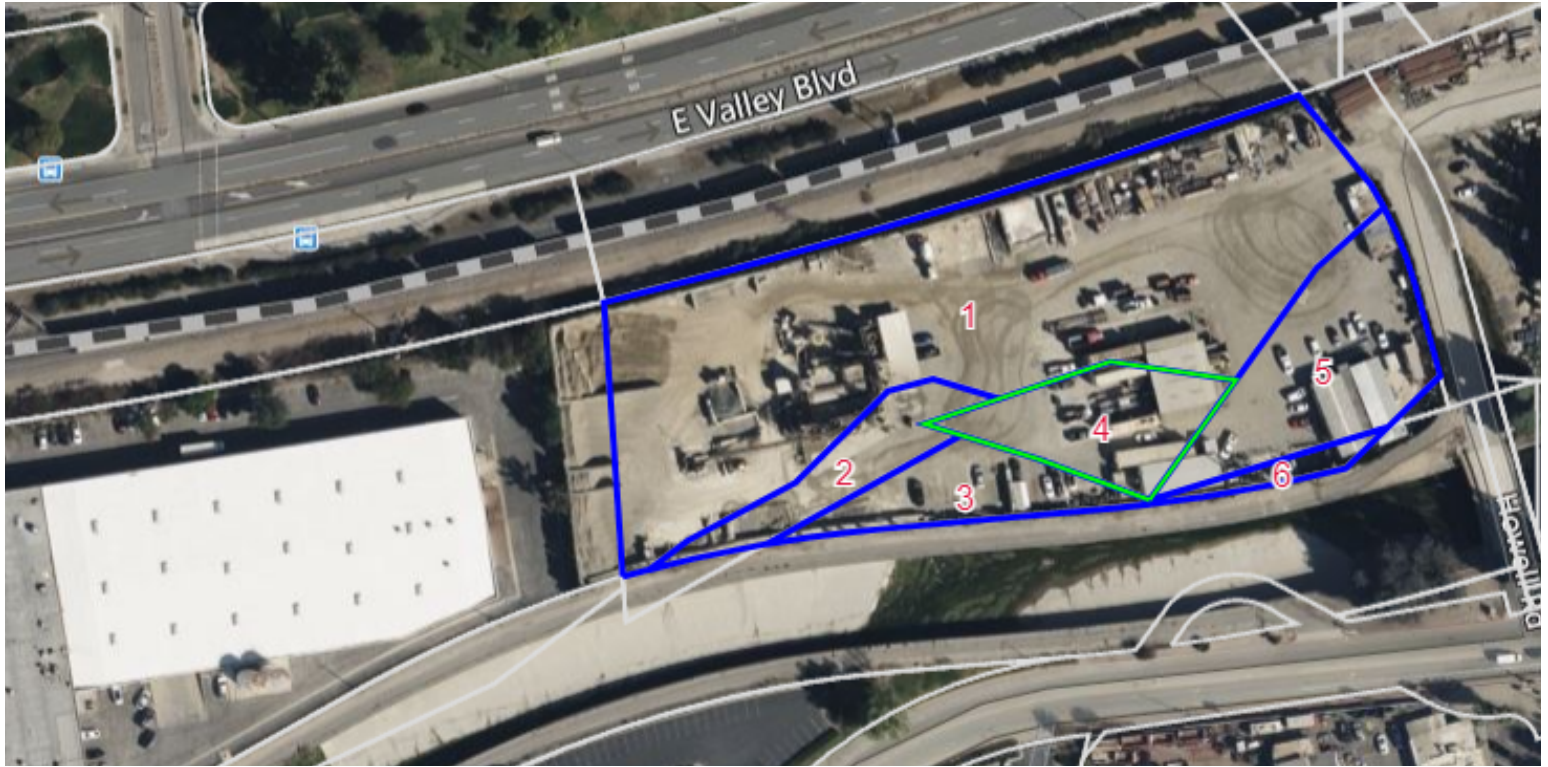
Garrett Massaro, SIOR

Cal DRE# 01771471

P: +1(562) 354-2516

E: gmassaro@leelalb.com

Copyright © Lee & Associates. All rights reserved. No part of this work may be reproduced or distributed without written permission of the copyright owner. The information contained in this report was gathered by Lee & Associates from sources believed to be reliable. Lee & Associates, however, makes no representation concerning the accuracy or completeness of such information and expressly disclaims any responsibility for any inaccuracy contained herein.



LOCAL EXPERTISE. INTERNATIONAL REACH. WORLD CLASS.

Brandon Carrillo

Cal DRE# 01745362

P: +1(562) 354-2510

E: bcarrillo@leelalb.com

Garrett Massaro, SIOR

Cal DRE# 01771471

P: +1(562) 354-2516

E: gmassaro@leelalb.com

Copyright © Lee & Associates. All rights reserved. No part of this work may be reproduced or distributed without written permission of the copyright owner. The information contained in this report was gathered by Lee & Associates from sources believed to be reliable. Lee & Associates, however, makes no representation concerning the accuracy or completeness of such information and expressly disclaims any responsibility for any inaccuracy contained herein.



LOCAL EXPERTISE. INTERNATIONAL REACH. WORLD CLASS.

Brandon Carrillo

Cal DRE# 01745362

P: +1(562) 354-2510

E: bcarrillo@leelalb.com

Garrett Massaro, SIOR

Cal DRE# 01771471

P: +1(562) 354-2516

E: gmassaro@leelalb.com

Copyright © Lee & Associates. All rights reserved. No part of this work may be reproduced or distributed without written permission of the copyright owner. The information contained in this report was gathered by Lee & Associates from sources believed to be reliable. Lee & Associates, however, makes no representation concerning the accuracy or completeness of such information and expressly disclaims any responsibility for any inaccuracy contained herein.