

# FOR LEASE

## PROFESSIONAL OFFICE BUILDING

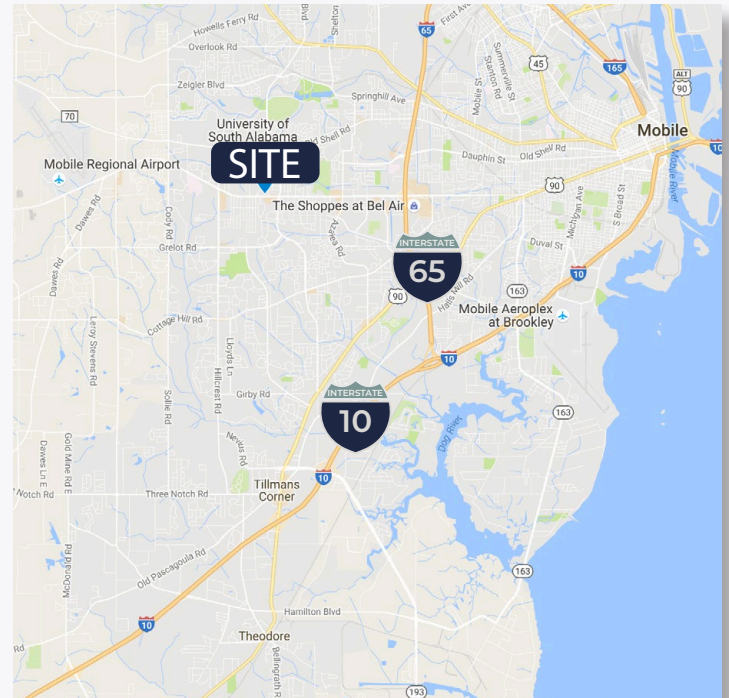
4728 Airport Blvd | Mobile, AL



### Property Features

- Available: 6,000 ± SF
- Parking: 25 ± spaces
- Zoning: B-1
- Year Built: 1977
- Space available on first and second floor
- Two story building with 100ft of frontage on Airport Blvd

**LEASE RATE: \$12.00/SF/YR NNN**



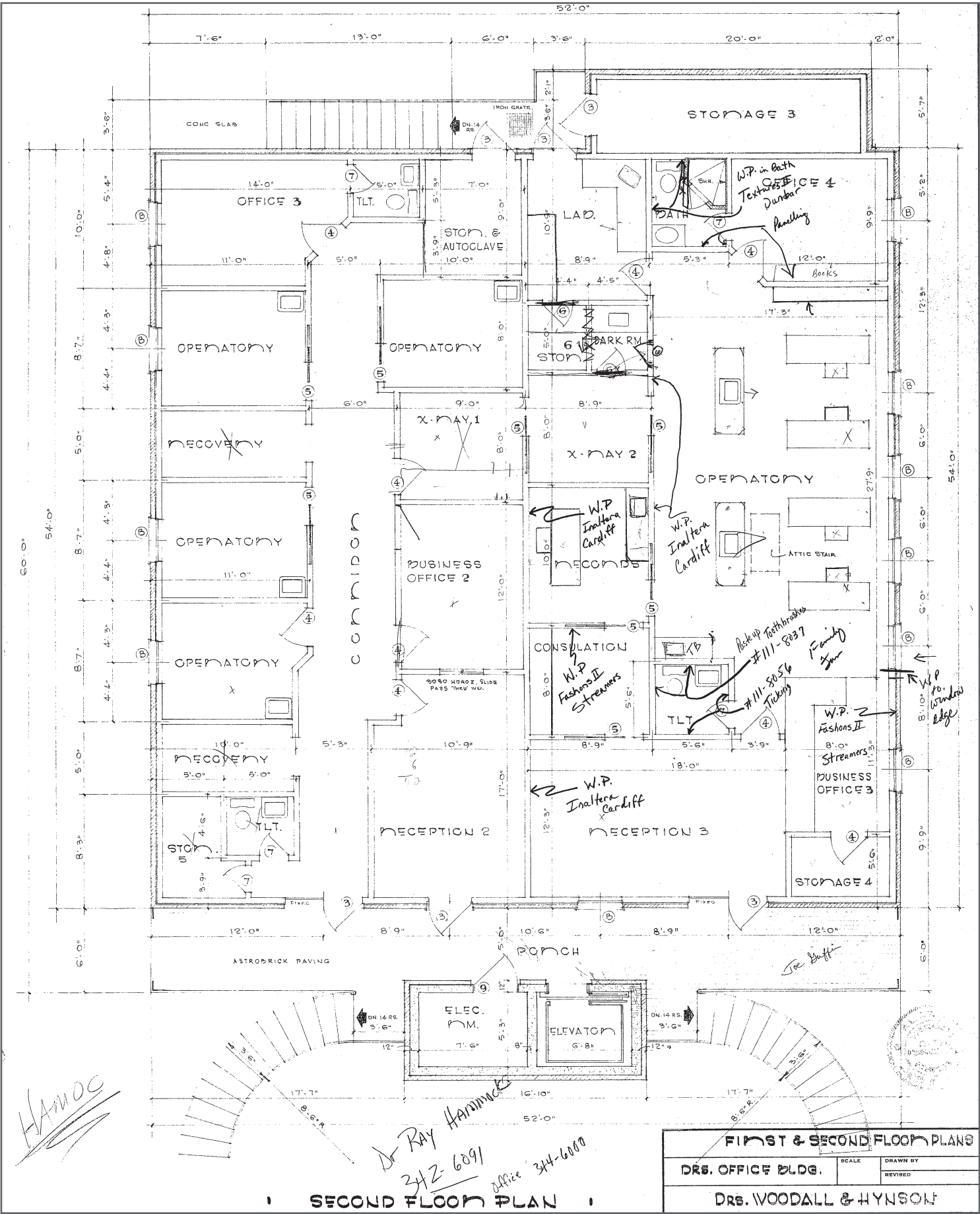


**Location Description:**

The subject site is located on a major retail corridor in the west Mobile submarket. The location is densely populated and provides abundant restaurant options, retail, banks, grocery stores and other various offices and services. It is convenient to I-65 and I-10, Providence Hospital, Mobile Regional Airport, and all the amenities of West Mobile and Midtown Mobile.



Providence Hospital	2.0 miles
I-65	3.1 miles
Mobile Regional Airport	4.4 miles
HWY 90	4.6 miles
I-10	6.3 miles
Downtown Mobile	12.9 miles
Spanish Fort, AL	20.8 miles
Daphne, AL	21.1 miles



*HAMOC*

*Dr. RAY HANNING*  
*342-6091* office *344-6000*

SECOND FLOOR PLAN

FIRST & SECOND FLOOR PLANS		
DRS. OFFICE BLDG.	SCALE	DRAWN BY
		REVISED
DRS. WOODALL & HYNSON		

