



Specifications

±4,200 SF (2 Units)

TOAL SIZE

±2,300 SF

1 RETAIL UNIT

±1,900 SF

5 Beds, 2 Baths

APARTMENT UNIT

Event Space, Child Care Center,
Social Club, Retail Store

IDEAL USE

±0.06 AC (Block 303, Lot 50)

LOT SIZE

\$3,728

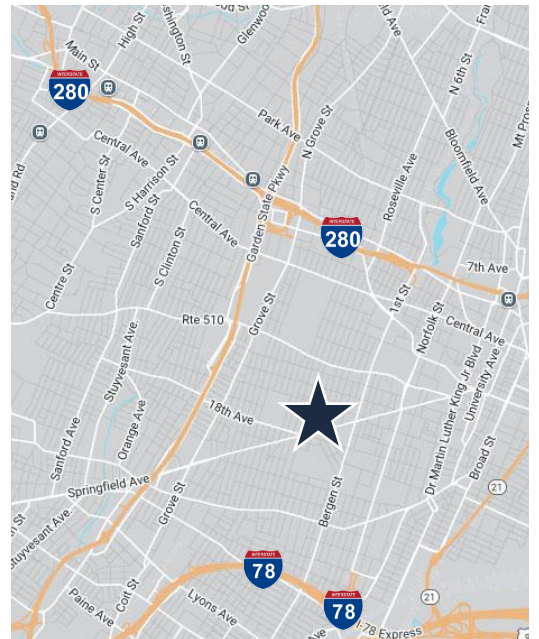
TAXES (2024)

1.5 MI to GSP Exit 144

1.9 MI to Newark Penn Station

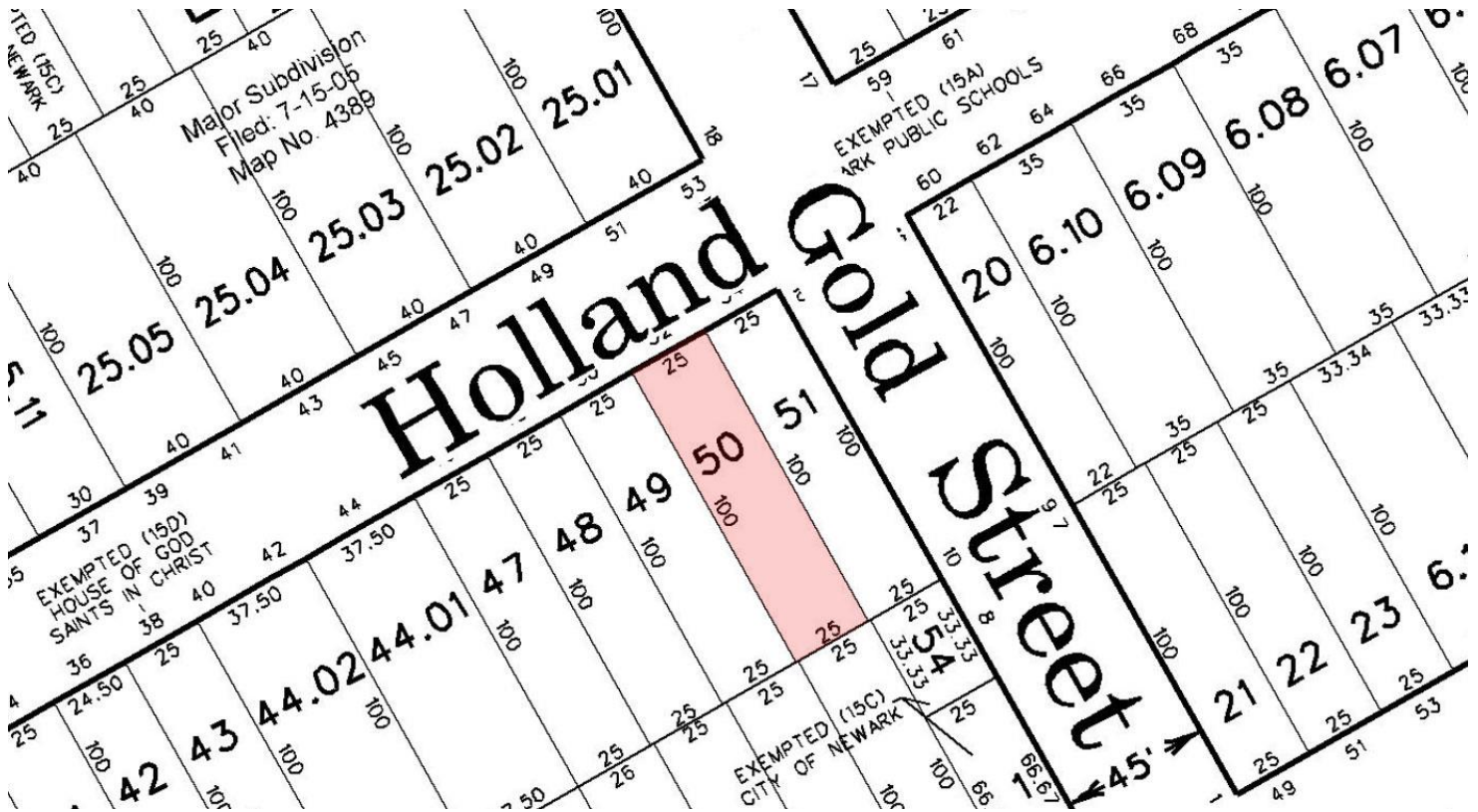
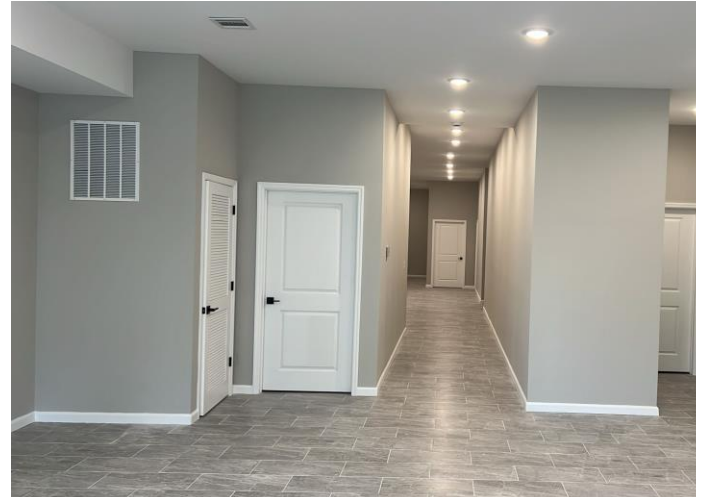
2.7 MI to US Highway 1 & 9

ACCESSIBILITY



For additional property information or to arrange an inspection,
please contact the exclusive broker:

Juan Disla
Director
973.379.6644 x 226
JD@blauberg.com



For additional property information or to arrange an inspection,
please contact the exclusive broker:

Juan Disla
Director
973.379.6644 x 226
JD@blauberg.com



5 MILES

- Total Population: 812,531
- Households: 301,058
- Median Household Income: \$76,055
- Average Household Size: 2.6
- Transportation to Work: 395,424
- Labor Force: 647,902

10 MILES

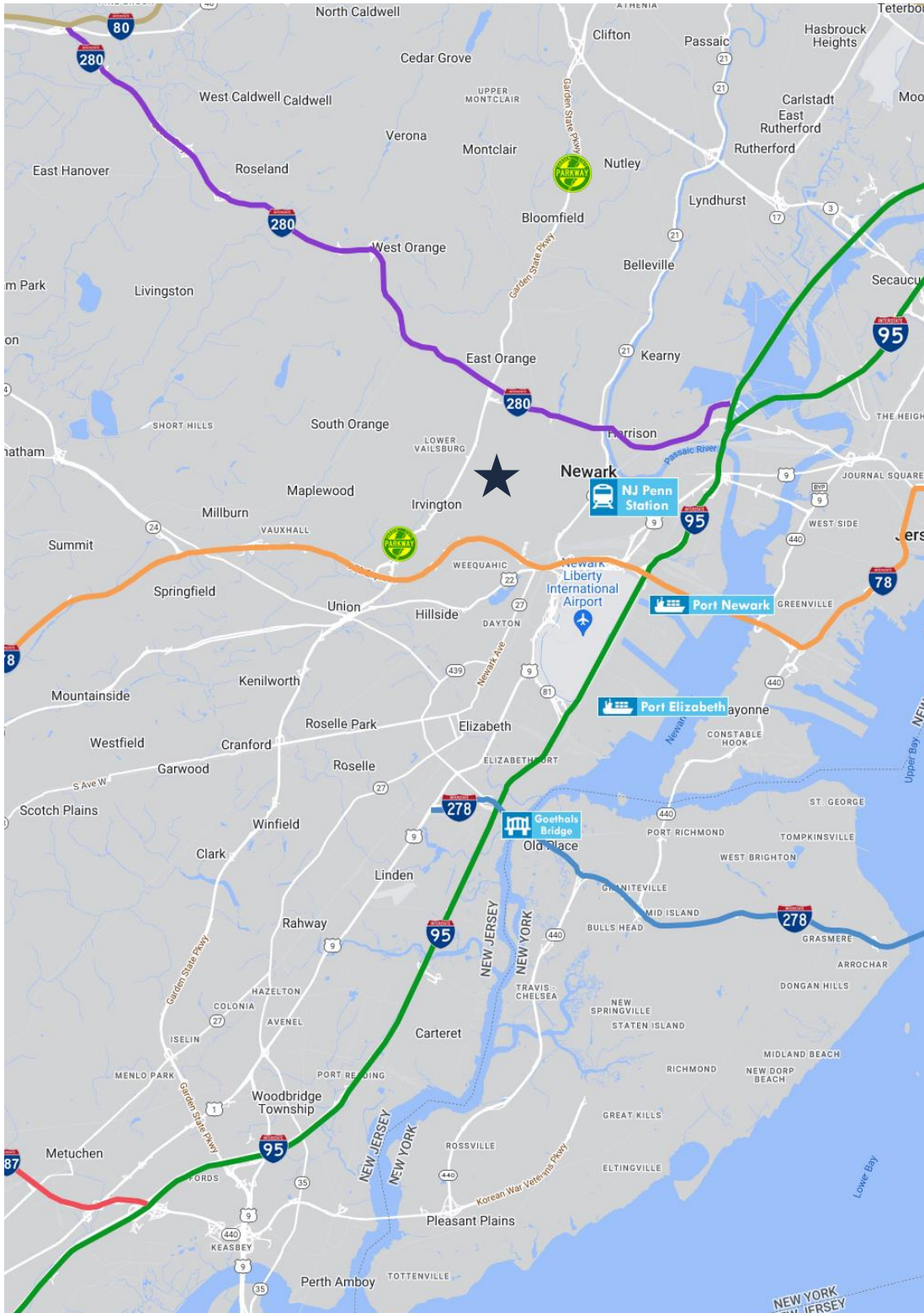
- Total Population: 2.3M
- Households: 876,221
- Median Household Income: \$104,159
- Average Household Size: 2.6
- Transportation to Work: 1.17M
- Labor Force: 1.85M

15 MILES

- Total Population: 7.06M
- Households: 2.87M
- Median Household Income: \$108,971
- Average Household Size: 2.4
- Transportation to Work: 3.68M
- Labor Force: 5.8M

For additional property information or to arrange an inspection, please contact the exclusive broker:

Juan Disla
Director
973.379.6644 x 226
JD@blauberg.com



ACCESSIBILITY



1.5 MI
GSP Exit 144



1.6 MI
I-280 Exit 12



1.9 MI
Penn Station



2.7 MI
US Hwy 1 & 9



3.98 MI
I-78 Exit 52



4.44 MI
EWR



5.0 MI
I-95 Exit 14



5.8 MI
Ports Newark & Elizabeth



12.3 MI
Holland Tunnel



12.8 MI
Holland Tunnel

For additional property information or to arrange an inspection,
please contact the exclusive broker:

Juan Disla
Director
973.379.6644 x 226
JD@blauberg.com

The information contained herein has been obtained from sources considered to be reliable, but no guarantee of its accuracy is made by this company. In addition, no representation is made respecting zoning, condition of title, dimensions, or any matters of a legal or environmental nature. Such matters should be referred to legal counsel for determination. Terms and conditions are subject to change without prior notice. Subject to errors and omissions.