



2419 SECOND AVENUE

EAST HARLEM STORE | 1,500 SF | STEPS FROM 125TH STREET RETAIL CORRIDOR

2419 Second Avenue

Northwest Corner of East 124th Street

Available Space

Ground (inline): 1,500 sf

Possession: Immediate

Frontage: 15'-4" along 2nd Ave.

Rent: Upon Request



Comments

- Located at base of 185 unit rental building – formerly Metro by T Mobile - all dry uses considered
- Steps from 125th Street retail corridor and transportation
- Accessible via the **6** subway station at 116th St/Lexington Ave; and the planned Phase 2 expansion of the Second Avenue subway will provide subway service to 125th Street via an extension of the **Q** -line to Lexington Avenue. Preparation work began in January 2024 for the construction of a new 106th St. Station.

By the Numbers

Retail Businesses

579

1 Mile Radius

Households

63,030

2024 - 1 Mile Radius

Household Income

\$64,497

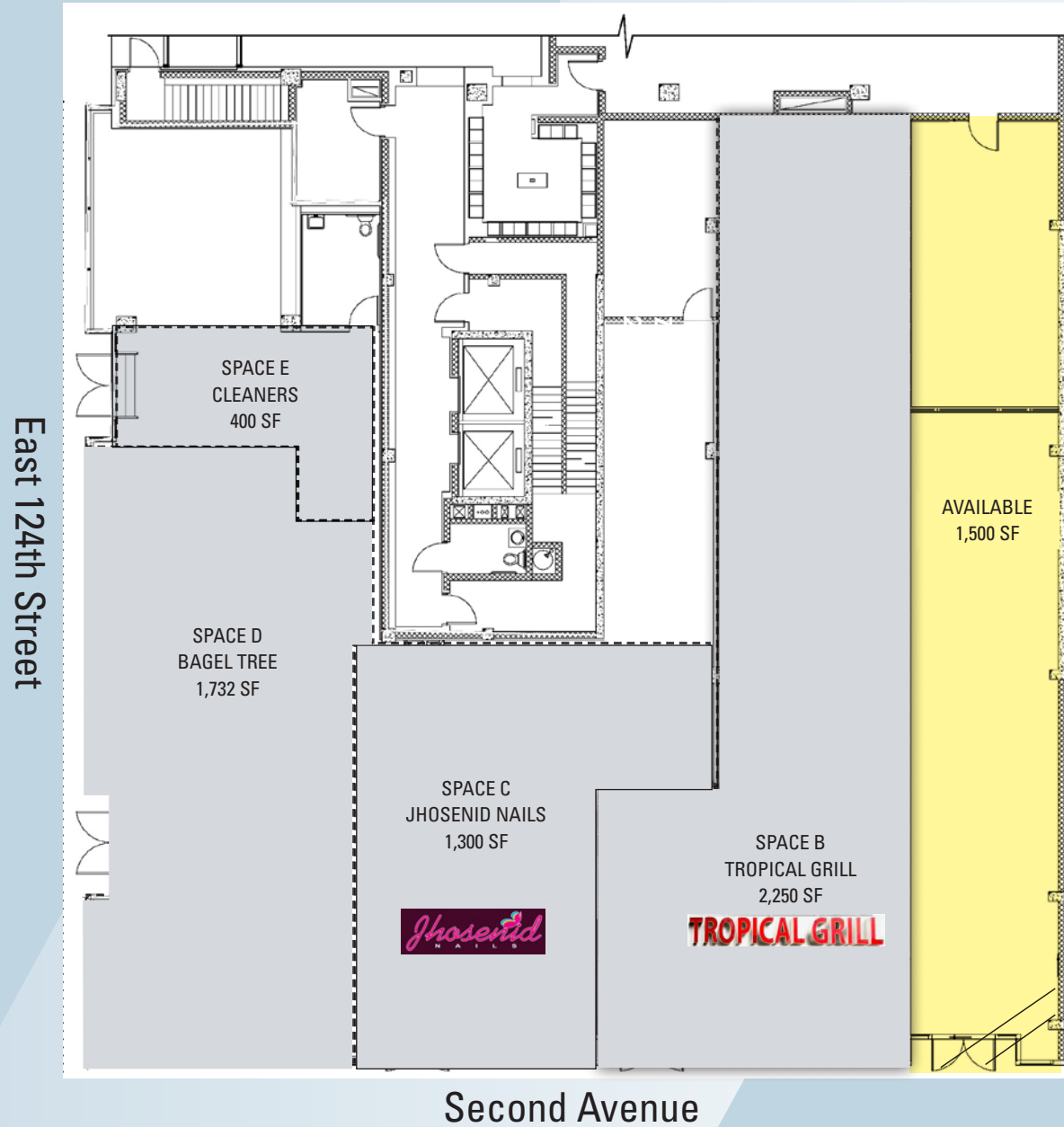
2024 Average

Subway Ridership

2,766,817

2023 Annual - 116th St/Lexington Ave

Floor Plan





For further information and/or inspection contact:

Mark Tergesen

Partner

Licensed Assoc. Real Estate Broker

212.400.9528

mt@absre.com

Cooper Katz

Executive Director

Licensed Real Estate Salesperson

646-439-2009

ckatz@absre.com

ABS Partners Real Estate • 200 Park Avenue South, 10th Floor, New York, NY 10003 • 212.400.6060 • www.absre.com