



RAVENSWOOD

1619 W. Lawrence Ave  
Chicago, IL

New Retail Storefront

FOR LEASE

## Key Details

Price: \$35 per SF

RE Taxes: \$8.75 (est. 2025)

CAM: \$1.25

Size: approx. 1,350 SF

Zoning: B3-1.5

Ward: 47th (Martin)

## Listing Description

Explore the opportunity of 1619 West Lawrence Avenue in the vibrant Ravenswood neighborhood of Chicago. This new construction modern retail/office space, featuring 1,350 square feet and high ceilings, is ready for your unique concept and will be delivered in vanilla box condition. It includes one restroom, central air/heat and a chase for potential restaurant hood venting. Possible one car parking in the back. Located on a bustling stretch of Lawrence Avenue, just west of Ashland, this property offers excellent exposure to both foot and vehicle traffic. The B3-1.5 zoning supports a wide range of business opportunities, making it an ideal choice for your next retail or office venture.



**COMPASS**

**Bill Hynes**

Broker

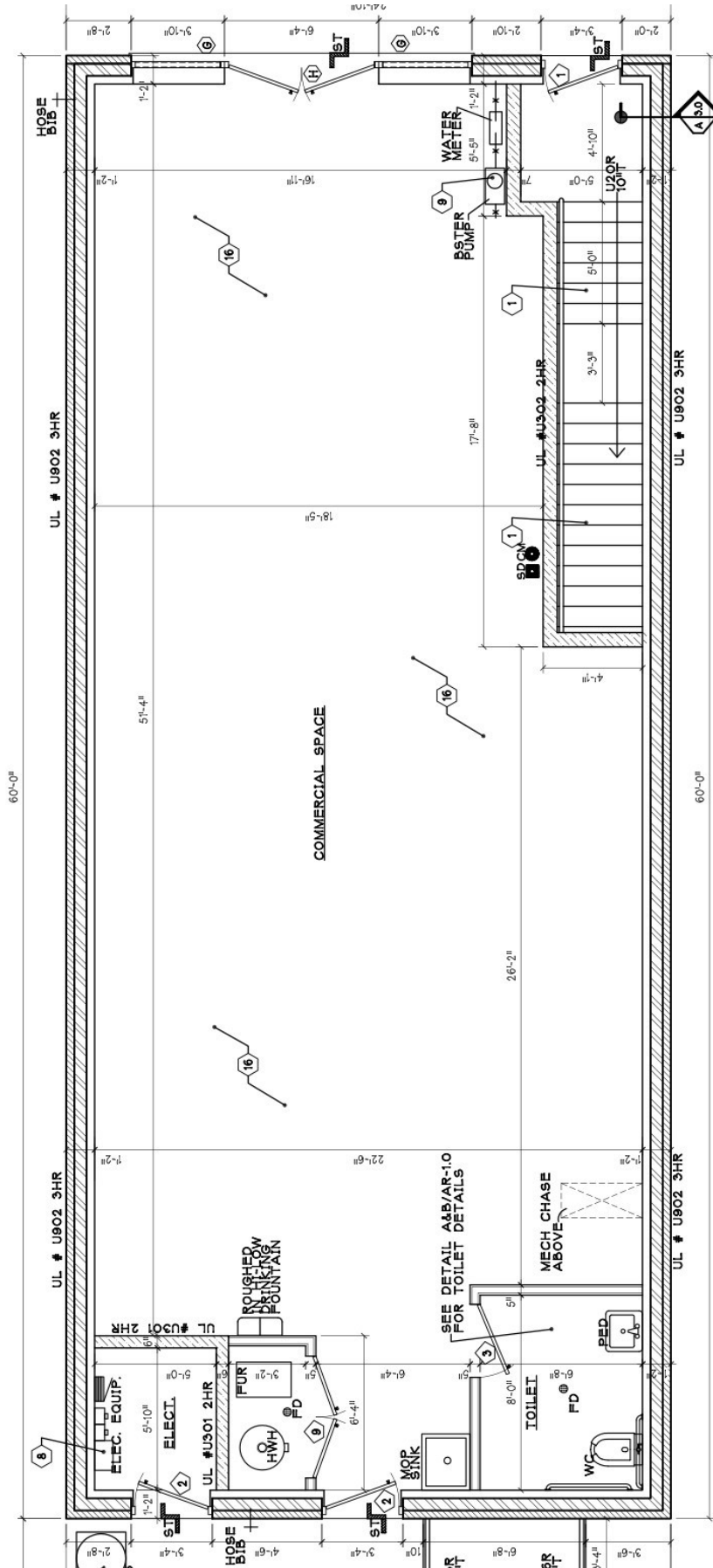
M: 773.671.7689

bill.hynes@compass.com



Compass is a licensed real estate broker. All material is intended for informational purposes only and is compiled from sources deemed reliable but is subject to errors, omissions, changes in price, condition, sale, or withdrawal without notice. No statement is made as to the accuracy of any description or measurements (including square footage). This is not intended to solicit property already listed. No financial or legal advice provided. Equal Housing Opportunity. Photos may be virtually staged or digitally enhanced and may not reflect actual property conditions.

# COMPASS



1 GROUND FLOOR PLAN

SCALE: 1/4" = 1'-0"