

# For Lease

## Knowledge Farms

3280 Urbana Pike, Ijamsville, MD 21754



### Space Available

**Suite 102**— 2,278 Rentable Square Feet

- Built-out as fitness center
- Available now

**Suite 205**— 1,302 Rentable Square Feet

- Built-out as therapist office
- Available 11/1/2021



Knowledge Farms is the premier medical office building in Urbana. Urbana is a rapidly-growing community with already strong demographics in place. Fannie Mae, Social Security Administration, and Kite Pharma among other major government institutions and corporations are located here. There is convenient access to I-270 and MD-355. Nearby amenities including banks, restaurants, Giant grocery, daycares, and several golf courses. The diverse building tenant mix currently includes **Urbana GI Endoscopy, Mid-Maryland Musculoskeletal Institute, Pivot Physical Therapy, and Capital Digestive Care**. For more information please visit our website: <https://knowledgefarms.com/> or contact our leasing representatives below.

**Andrew Borsa: 240-315-3103 or [aborsa@tylerco.com](mailto:aborsa@tylerco.com)**

**Chad Tyler: 301-370-3611 or [chad@tylerco.com](mailto:chad@tylerco.com)**

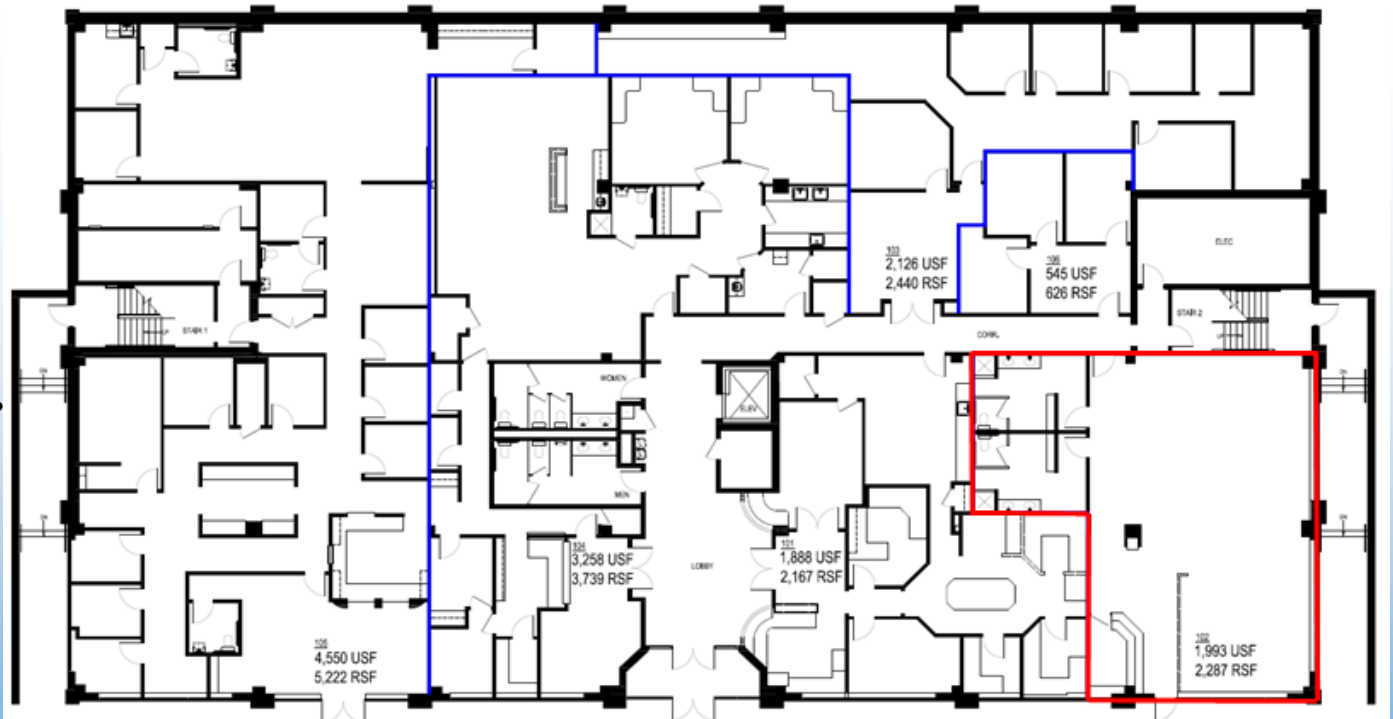


## Suite 102

⇒ 2, 287 Rentable Square Feet

1,993 Usable Square Feet

⇒ Available Now



Available

Andrew Borsa: 240-315-3103 or [aborsa@tylerco.com](mailto:aborsa@tylerco.com)

Chad Tyler: 301-370-3611 or [chad@tylerco.com](mailto:chad@tylerco.com)



## Suite 205

⇒ 1,302 Rentable Square Feet

1,103 Usable Square Feet

⇒ Available 11/1/2021



Available

Andrew Borsa: 240-315-3103 or [aborsa@tylerco.com](mailto:aborsa@tylerco.com)

Chad Tyler: 301-370-3611 or [chad@tylerco.com](mailto:chad@tylerco.com)

