

3838

CHARLES RAPER JONAS HWY

**±67,000 SF of Industrial
Space & ±2.0 AC of IOS
Space Available for Lease**



CONTACT BROKERS FOR MORE INFORMATION

Colin Ferguson

Associate

704-512-0139

colin.ferguson@avisonyoung.com

Ryan Kendall

Vice President

704 612 0395

ryan.kendall@avisonyoung.com

**AVISON
YOUNG**

INDUSTRIAL SPACE & IOS FOR LEASE

3838 Charles Raper Jonas Hwy, Stanley, NC 28164

Property features

Covered loading platform deck with two 10' x 10' dock high doors

Outdoor storage opportunities available

Pylon signage opportunity along high-traffic Hwy 27 / Charles Raper Jonas Hwy

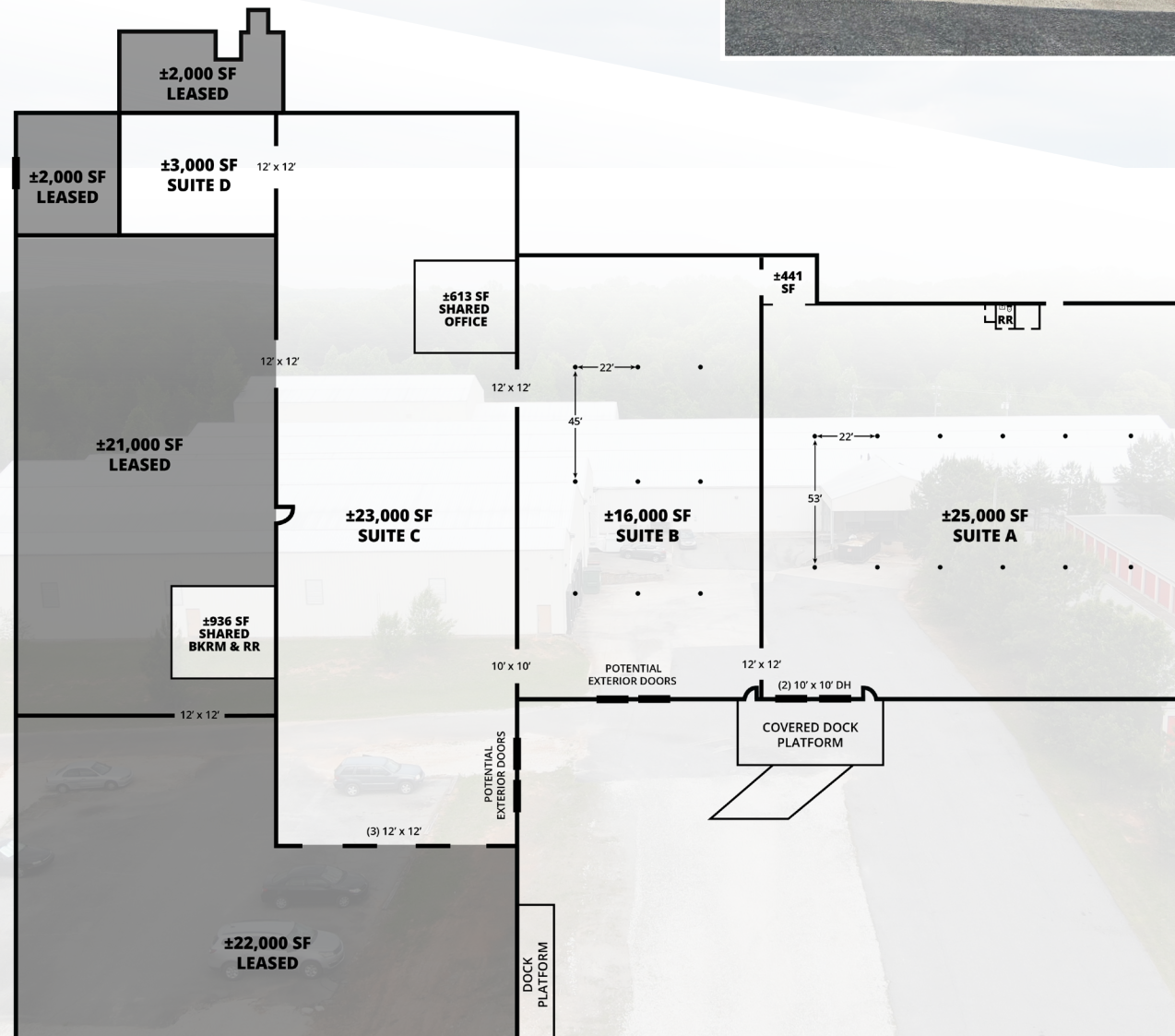
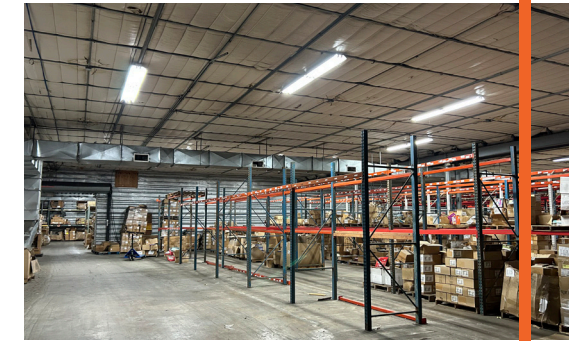
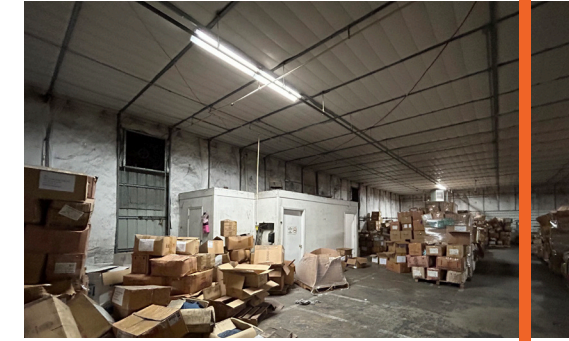
Ample parking

Space(s) can be subdivided



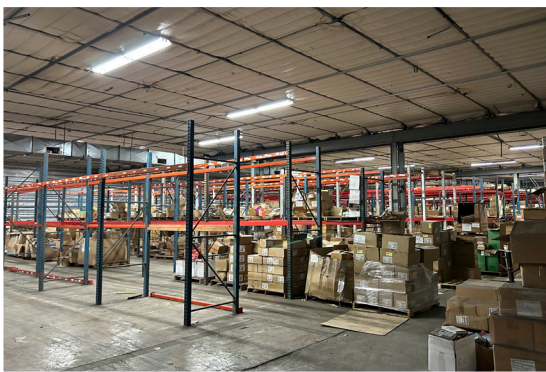
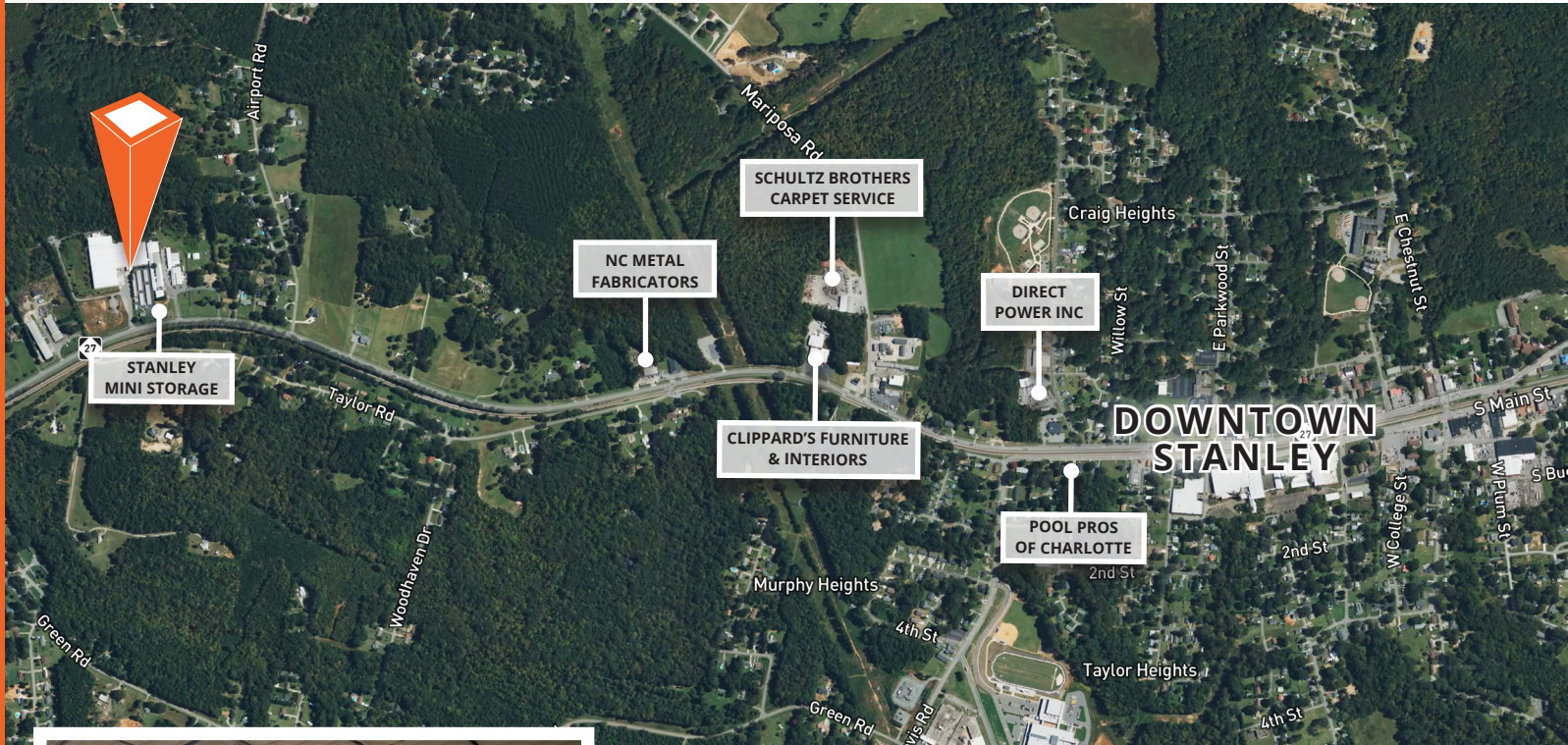
Property details

Total Building SF:	±114,000 SF
Total Available SF:	±67,000 SF
Available Suite (A):	±25,000 SF
Available Suite (B):	±16,000 SF
Available Suite (C):	±23,000 SF
Available Suite (D):	±3,000 SF
Total IOS Lot Acreage:	±2.0 AC
Available IOS Lot (A):	±1.6 AC
Available IOS Lot (B):	±0.4 AC
Site Acreage:	±9.28 AC
Zoning:	ID (Industrial)
Clear Height:	15'
Dock High Doors:	Two (2) 10' x 10' doors
Lighting:	Newly installed LED
Power:	450 amps
HVAC:	Partially conditioned
Space Upgrades:	Available per mutually agreeable terms



LOCATION OVERVIEW

3838 Charles Raper Jonas Hwy, Stanley, NC 28164



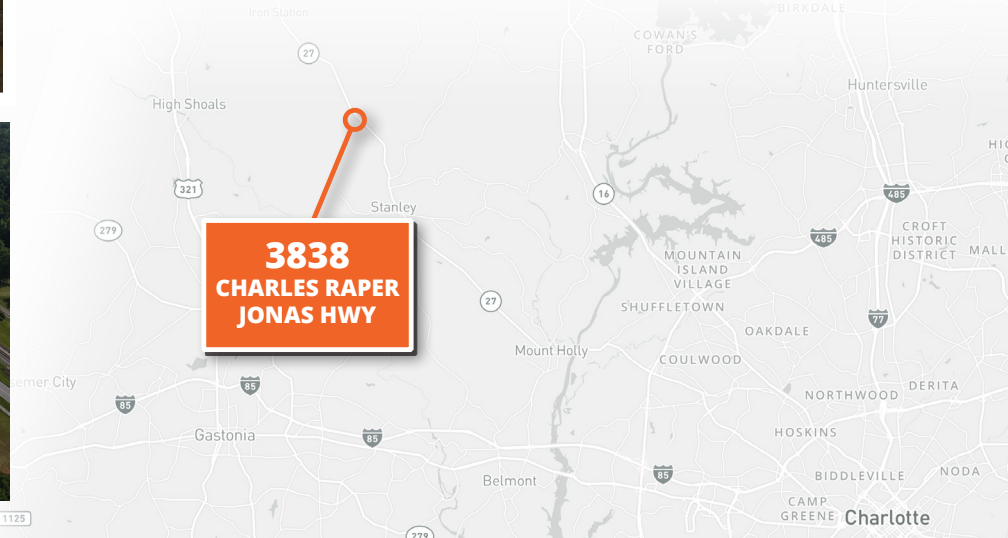
DOWNTOWN STANLEY
2.4 miles



HIGHWAY 321
7.6 miles



CHARLOTTE DOUGLAS
INTERNATIONAL AIRPORT
17.8 miles



Colin Ferguson
Associate
704-512-0139
colin.ferguson@avisonyoung.com

Ryan Kendall
Vice President
704 612 0395
ryan.kendall@avisonyoung.com

AVISON
YOUNG