

4020

PIKE LANE CONCORD, CA

OFFICE /
WAREHOUSE
FOR LEASE

±20,000 SF



NEWMARK

TYLER EPTING 925.974.0238
tyler.epting@nrmk.com / CA RE LICENSE #01317533

GRADEN TRAVIS 925.974.0104
graden.travis@nrmk.com / CA RE LICENSE #00871716

HIGHLIGHTS

OFFICE AREA

- + Approximately 30% improved with offices, including a reception, multiple private offices, open space, conference rooms, restrooms, and a break room
- + Fully conditioned space with a good work flow and some higher end finishes from a previous owner/user occupant.
- + Extensive window line on a corner to bring in natural light

WAREHOUSE AREA

- + Three (3) 12' x 14' Grade Level Doors
- + 1,000 amps at 277/480 volt, 3 phase electrical service
- + 16'-18' ceiling clearance
- + Fully sprinklered building (.22 GPM / 2,000 Sq. Ft.)
- + Existing racking in place can be purchased separately.



SITE HIGHLIGHTS

- + Includes use of 40 Parking Stalls
- + Easy Access to staging/roll-up doors from Pike Lane and Arnold Industrial Way
- + Generous park-like landscaping around two sides of the property
- + Located in the prestigious Concord Diablo Business Park in North Concord, home to tenants such as Benchmark, Pacific Instruments, Game Ready and Innersense Organic Beauty.



NEWMARK

TYLER EPTING 925.974.0238
tyler.epting@nrmk.com / CA RE LICENSE #01317533

GRADEN TRAVIS 925.974.0104
graden.travis@nrmk.com / CA RE LICENSE #00871716



4020
PIKE LANE

ARNOLD INDUSTRIAL WAY

PIKE LANE

LOCATION HIGHLIGHTS

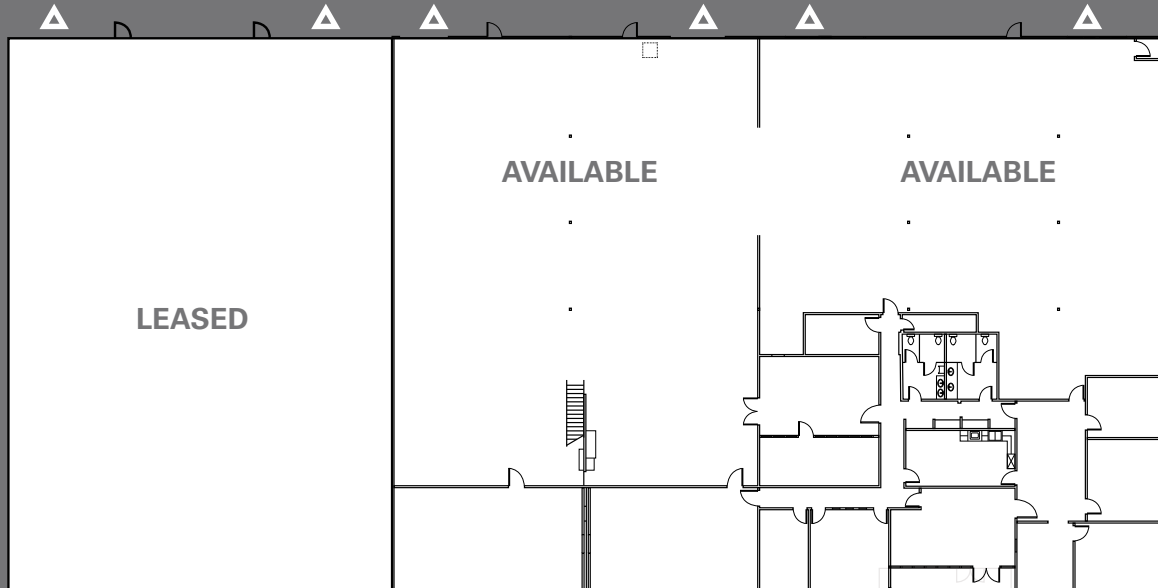
- + Easy Access to Highway 4/242 and Interstate 680
- + 8 Miles to Walnut Creek and Benicia
- + 35 Miles to San Rafael and San Francisco
- + 60-65 Miles to Sacramento and San Jose
- + Adjacent to the +/- 5,000 acre Concord Naval Weapons Station redevelopment project
- + Flexible OBP (Office Business Park) zoning
- + Easy commute from all points of the East Bay Area and a fantastic striking point to service the entire greater Bay Area.

NEWMARK

TYLER EPTING 925.974.0238
tyler.epting@nrmk.com / CA RE LICENSE #01317533

GRADEN TRAVIS 925.974.0104
graden.travis@nrmk.com / CA RE LICENSE #00871716

FLOORPLAN



4020
PIKE LANE

PIKE LANE

▲ GRADE LEVEL DOORS

ARNOLD INDUSTRIAL WAY

CALIFORNIA
HIGHWAY 4

NEWMARK

TYLER EPTING 925.974.0238
tyler.epting@nrmk.com / CA RE LICENSE #01317533

GRADEN TRAVIS 925.974.0104
graden.travis@nrmk.com / CA RE LICENSE #00871716