

VIOLA STREET

Viola Street @ 2nd Street, Camden, NJ 08104

 FOR SALE OR LEASE

 LAND

 3.14+/- ACRES



PROPERTY DESCRIPTION

3.14+/- Acres for Sale or Land Lease

Rail access capable

Zoned PRI - Port Related Industrial. Allowable uses include transit sheds and related facilities, outdoor cargo container storage, off-street parking and railroad accessory use.

Access via Jefferson Street

SALE PRICE / LEASE RATE:

\$3,500,000 / CALL FOR INFORMATION

FOR MORE INFORMATION


Joe Riggs

 609.352.1162

 joe.riggs@naimertz.com

NAI MERTZ DISCLAIMER: NO WARRANTY OR REPRESENTATION, EXPRESS OR IMPLIED, IS MADE AS TO THE ACCURACY OF THE INFORMATION CONTAINED HEREIN, AND THE SAME IS SUBMITTED SUBJECT TO ERRORS, OMISSIONS, CHANGE OF PRICE, RENTAL OR OTHER CONDITIONS, PRIOR SALE, LEASE OR FINANCING, OR WITHDRAWAL WITHOUT NOTICE, AND OF ANY SPECIAL LISTING CONDITIONS IMPOSED BY OUR PRINCIPALS NO WARRANTIES OR REPRESENTATIONS ARE MADE AS TO THE CONDITION OF THE PROPERTY OR ANY HAZARDS CONTAINED THEREIN ARE ANY TO BE IMPLIED. OUTLINES ARE APPROXIMATE AND SHOWN ONLY TO IDENTIFY THE PARCEL IN CONSIDERATION.

NAI Mertz

 NAI Mertz | 21 Roland Avenue
Mount Laurel, NJ 08054
856.234.9600 | naimertz.com



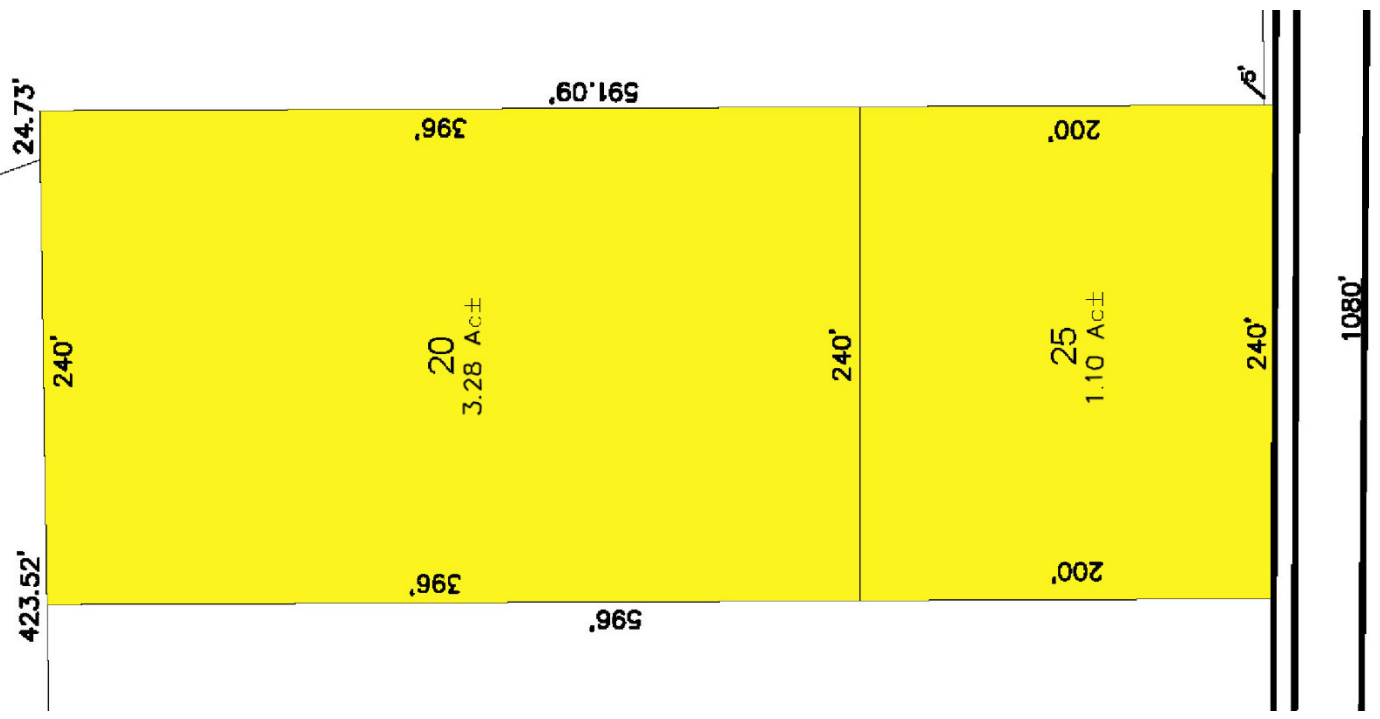
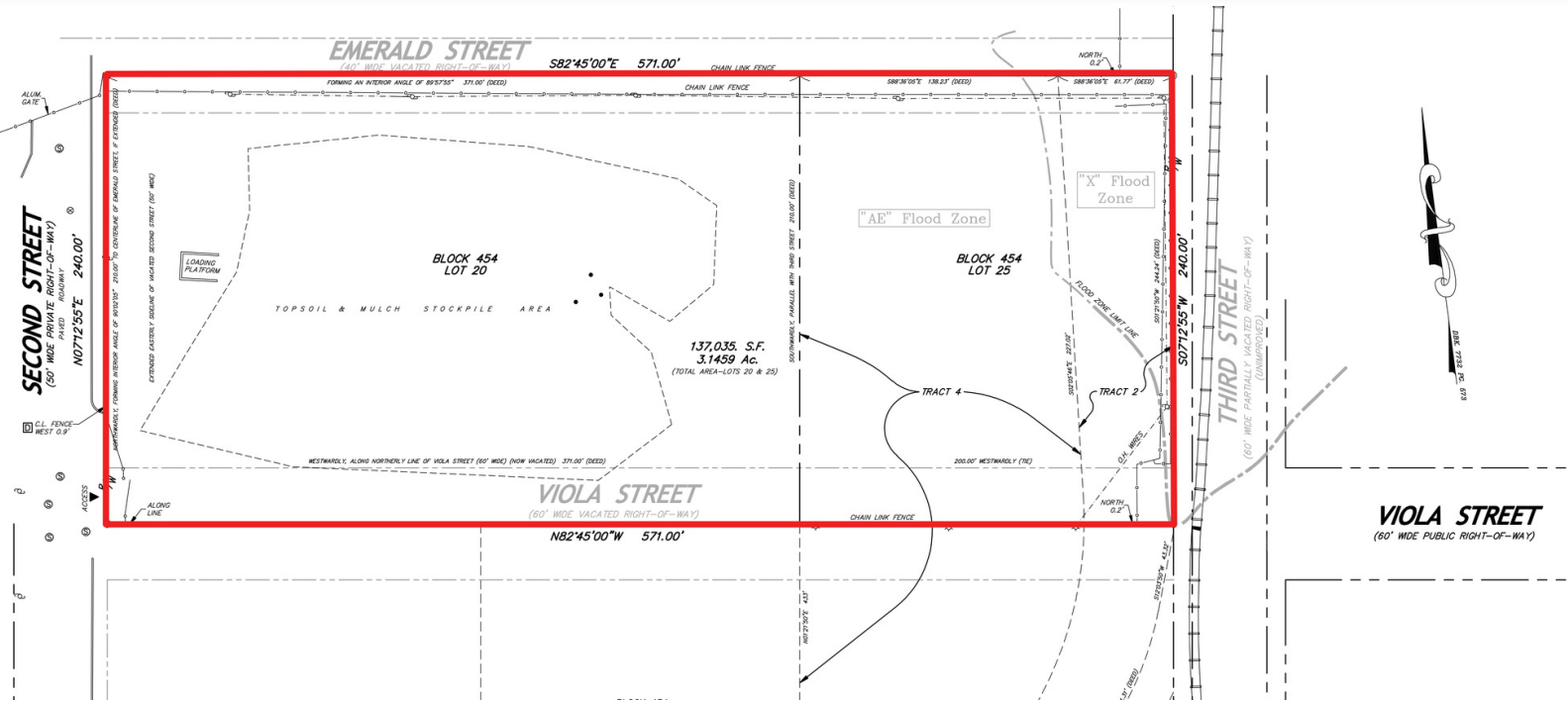
VIOLA STREET

Viola Street @ 2nd Street, Camden, NJ 08104

 FOR SALE OR LEASE

 LAND

 3.14+/- ACRES



FOR MORE INFORMATION


Joe Riggs

 609.352.1162

 joe.riggs@naimertz.com

NAI MERTZ DISCLAIMER: NO WARRANTY OR REPRESENTATION, EXPRESS OR IMPLIED, IS MADE AS TO THE ACCURACY OF THE INFORMATION CONTAINED HEREIN, AND THE SAME IS SUBMITTED SUBJECT TO ERRORS, OMISSIONS, CHANGE OF PRICE, RENTAL OR OTHER CONDITIONS, PRIOR SALE, LEASE OR FINANCING, OR WITHDRAWAL WITHOUT NOTICE, AND OF ANY SPECIAL LISTING CONDITIONS IMPOSED BY OUR PRINCIPALS NO WARRANTIES OR REPRESENTATIONS ARE MADE AS TO THE CONDITION OF THE PROPERTY OR ANY HAZARDS CONTAINED THEREIN ARE ANY TO BE IMPLIED. OUTLINES ARE APPROXIMATE AND SHOWN ONLY TO IDENTIFY THE PARCEL IN CONSIDERATION.

NAIMertz

 NAI Mertz | 21 Roland Avenue
Mount Laurel, NJ 08054
856.234.9600 | naimertz.com



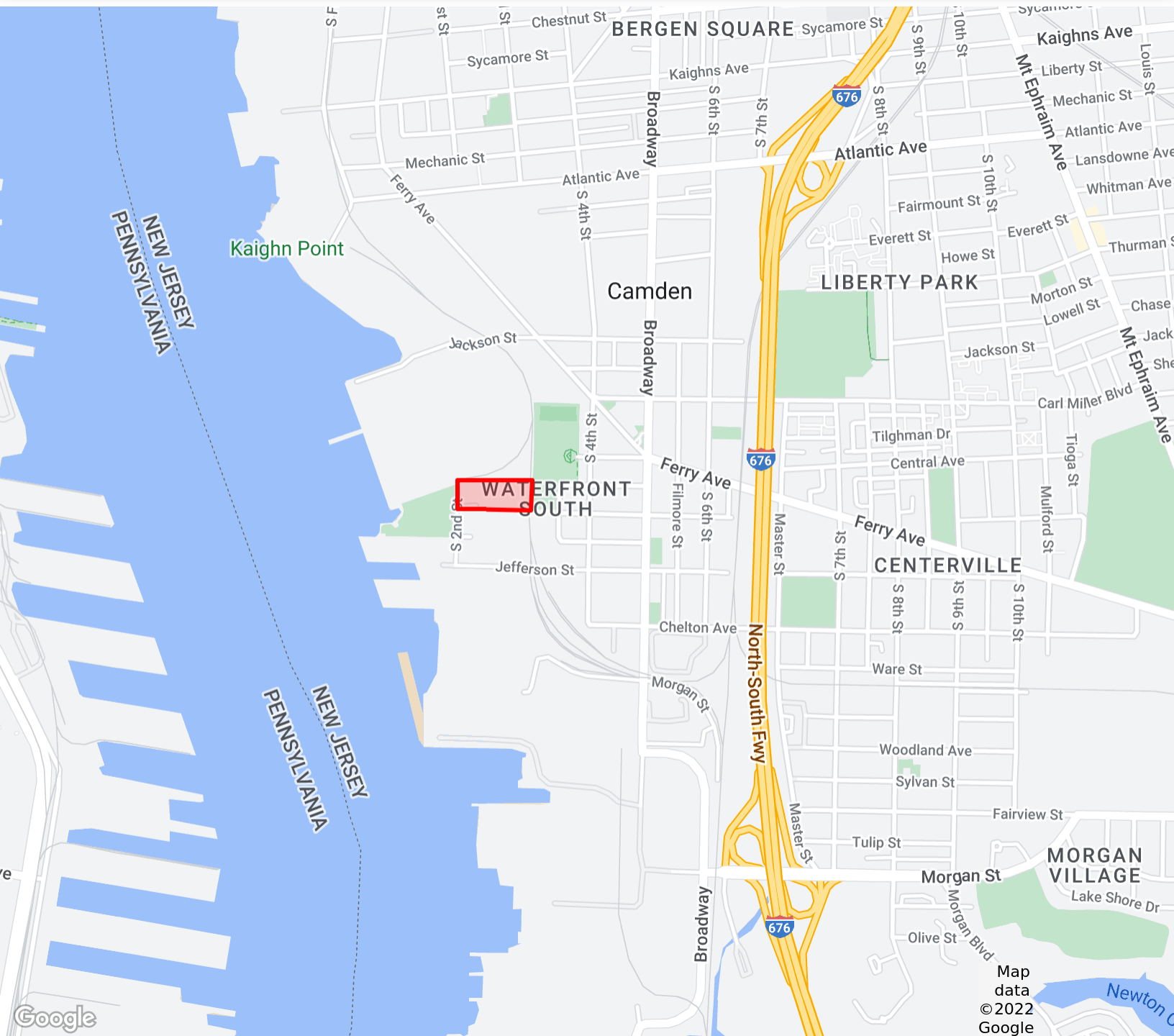
VIOLA STREET

Viola Street @ 2nd Street, Camden, NJ 08104

 FOR SALE OR LEASE

 LAND

 3.14+/- ACRES



FOR MORE INFORMATION


Joe Riggs

 609.352.1162

 joe.riggs@naimertz.com

NAI MERTZ DISCLAIMER: NO WARRANTY OR REPRESENTATION, EXPRESS OR IMPLIED, IS MADE AS TO THE ACCURACY OF THE INFORMATION CONTAINED HEREIN, AND THE SAME IS SUBMITTED SUBJECT TO ERRORS, OMISSIONS, CHANGE OF PRICE, RENTAL OR OTHER CONDITIONS, PRIOR SALE, LEASE OR FINANCING, OR WITHDRAWAL WITHOUT NOTICE, AND OF ANY SPECIAL LISTING CONDITIONS IMPOSED BY OUR PRINCIPALS NO WARRANTIES OR REPRESENTATIONS ARE MADE AS TO THE CONDITION OF THE PROPERTY OR ANY HAZARDS CONTAINED THEREIN ARE ANY TO BE IMPLIED. OUTLINES ARE APPROXIMATE AND SHOWN ONLY TO IDENTIFY THE PARCEL IN CONSIDERATION.

NAIMertz

 NAI Mertz | 21 Roland Avenue
Mount Laurel, NJ 08054
856.234.9600 | naimertz.com

