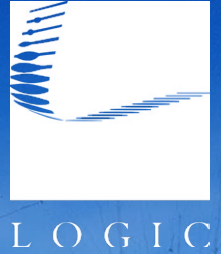


For Lease

Heritage Architecture Modern Workspace



5371 Kietzke Ln.
Reno, NV 89511

Casey Prostinak, SIOR
Vice President
775.813.2866
cprostinak@logicCRE.com
S.0177148.LLC

Listing Snapshot



\$2.40 - \$3.00 PSF MG
Lease Rate



± 344-7,329 SF
Available Square Footage
(can be demised)



3 Months
Rent Abatement*

Property Highlights

- 4.2 : 1,000 Parking Ratio
- Beautifully preserved hardwood flooring and a charming fireplace add warmth, sophistication, and a touch of old-world luxury
- This office boasts a storied past, offering charm and character that modern spaces simply can't replicate
- Access to large open terrace with pavers and mature landscaping
- Surrounding area is dense with dining and retail
- Adjacent to Rancharrah retail and office development
- Fifteen (15) private offices, two (2) conference rooms, and three (3) bullpens

*Promotion offer subject to leasing the entire building, 5 year term and credit of tenant.





 Retail

Del Monte Plaza




 Office / Industrial

NevDex Office Park

 Retail


SWIFT

 Retail


PERENN BAKERY

 Retail

 **Armondo & Sons Butcher Shop**

 Retail

BOX WOOD AVENUE Trademark Jewelry & Repair

 Parks

Anderson Regional Park

I-580 // 115,000 CPD

580

Del Monte Ln.


Kietzke Ln. // 17,000 CPD



 Retail


FIRST INDEPENDENT BANK


 Retail


CHASE


 Retail






 Retail



 Retail


Bone-ito
Chez Vous Boutique
SUNDAY PILATES

 Retail


Health Revolution

 Retail



SUBJECT

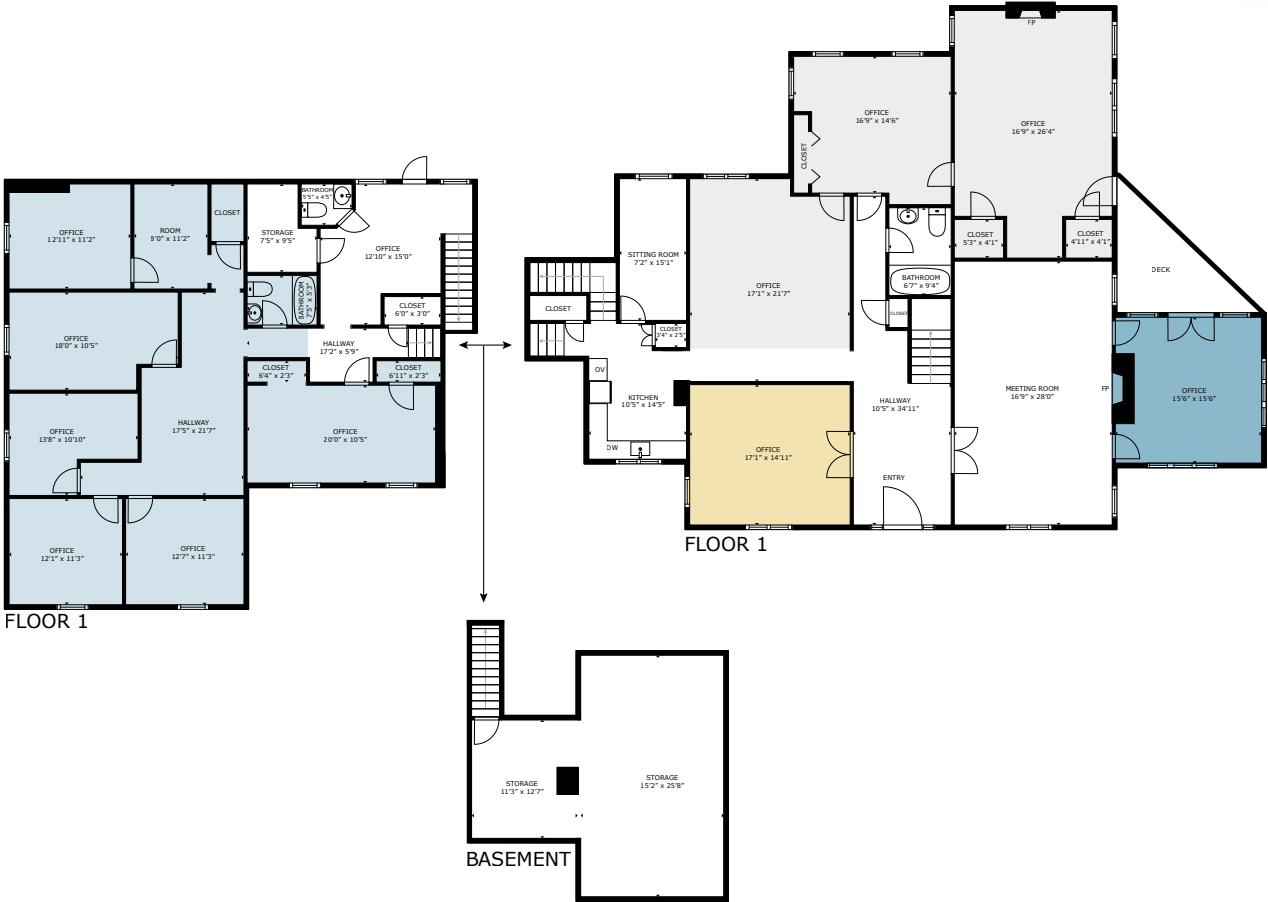
± 344-7,329 SF



Floor Plan | First Floor

[Click for a Virtual Tour](#)

Common Area

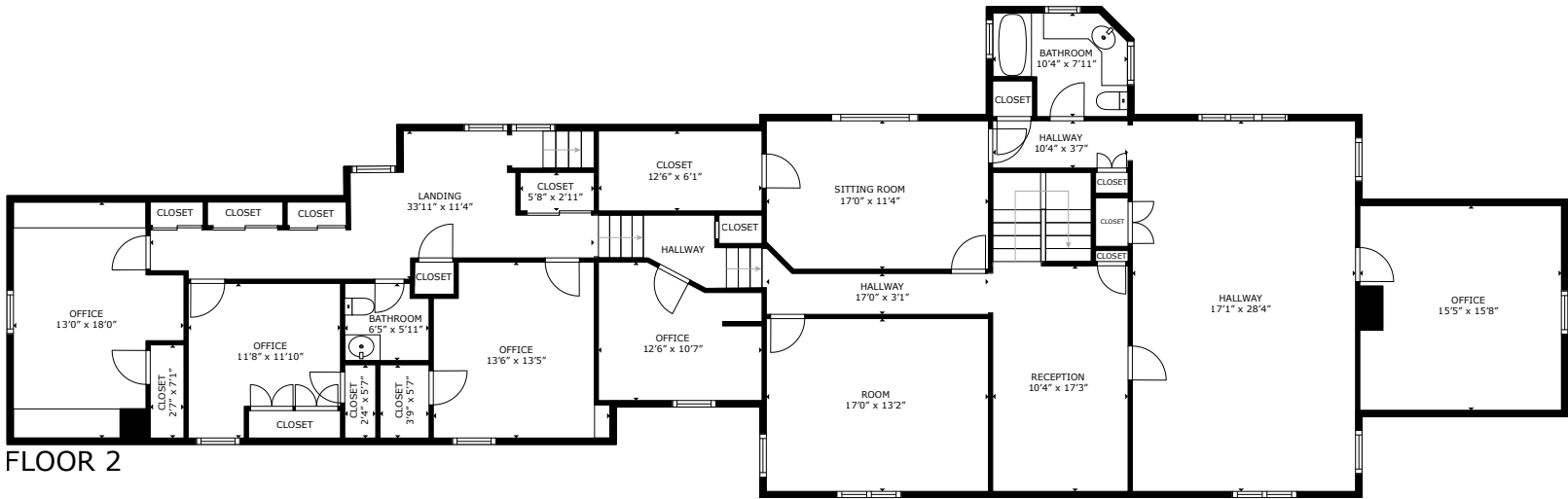


First Floor	Available Square Footage	Building Contig	Use	Price Per Square Foot
<div></div> Suite 1	± 1,833 SF	± 7,329 SF	Office	\$2.40 MG
<div></div> Suite 2	± 1,285 SF	± 7,329 SF	Office	\$2.40 MG
<div></div> Suite 3	± 345 SF	± 7,329 SF	Office	\$3.00 MG
<div></div> Suite 4	± 344 SF	± 7,329 SF	Office	\$3.00 MG

Floor Plan | Second Floor
Suite 5

Second floor can be leased to full floor user

[Click for a Virtual Tour](#)



Second Floor	Available Square Footage	Building Contig	Use	Price Per Square Foot
Suite 5	±3,513 SF	± 7,329 SF	Office	\$2.40 MG

Property Photos



LOGIC Commercial Real Estate

Specializing in Brokerage and Receivership Services



Join our email list and
connect with us on LinkedIn

The information herein was obtained from sources deemed reliable; however LOGIC Commercial Real Estate makes no guarantees, warranties or representation as to the completeness or accuracy thereof.

For inquiries please reach out to our team.

Casey Prostinak, SIOR
Vice President
775.813.2866
cprostinak@logicCRE.com
S.0177148.LLC