



Office

Medical Office to share with Existing Chiropractor

For More Information

Jeremy S. Larkin

+1 786 260 0402

jlarkin@naimiami.com

FOR SUBLEASE

8955 SW 87th Court, Suite 101 | Miami, FL 33176

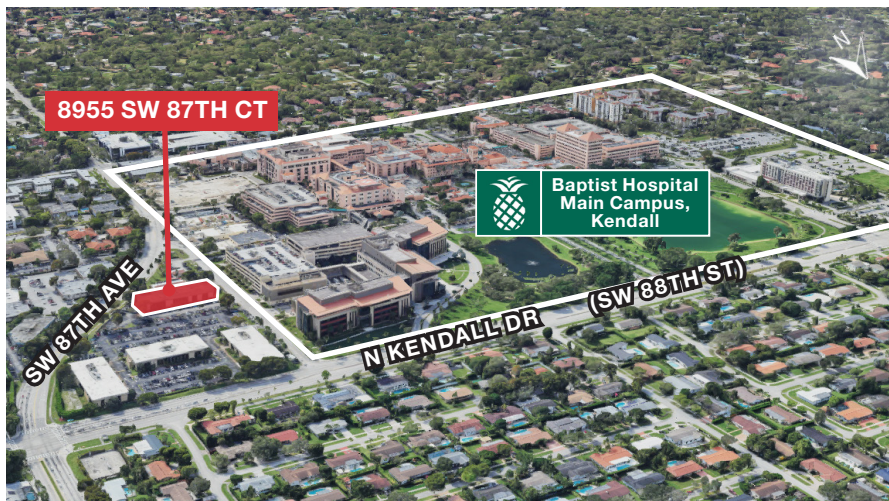
Space Available: **1,750 SF**
Lease Rate: **\$3,000 Per Month**

For more listings visit: naimia-ftl.com/properties

NAI Miami
Fort Lauderdale

Shared Medical Office

8955 SW 87th Court, Suite 101 | Miami, FL 33176



Ideal Uses

- Physicians
- Chiropractors
- Physical Therapists
- Weight Loss Specialists
- Psychologists
- Acupuncture
- Other Health-Related Professionals

Property Features

- 1,750 SF of shared office space with a private office and exam room with furniture included
- Shared spaces: receptionist and x-ray room
- Flexible lease terms
- Valet service for patients at a nominal cost

Location Features

- Adjacent to Baptist Hospital Main Campus, Kendall
- Serving Dadeland, Kendall, Pinecrest and South Miami markets



Demographic Summary



RADIUS

	1 Mile	3 Miles	5 Miles
Population	32,609	251,135	544,055
Households	15,139	99,761	224,009
Average Household Income	\$129,078	\$111,476	\$111,860
Employees	50,848	145,851	425,841

Traffic Count



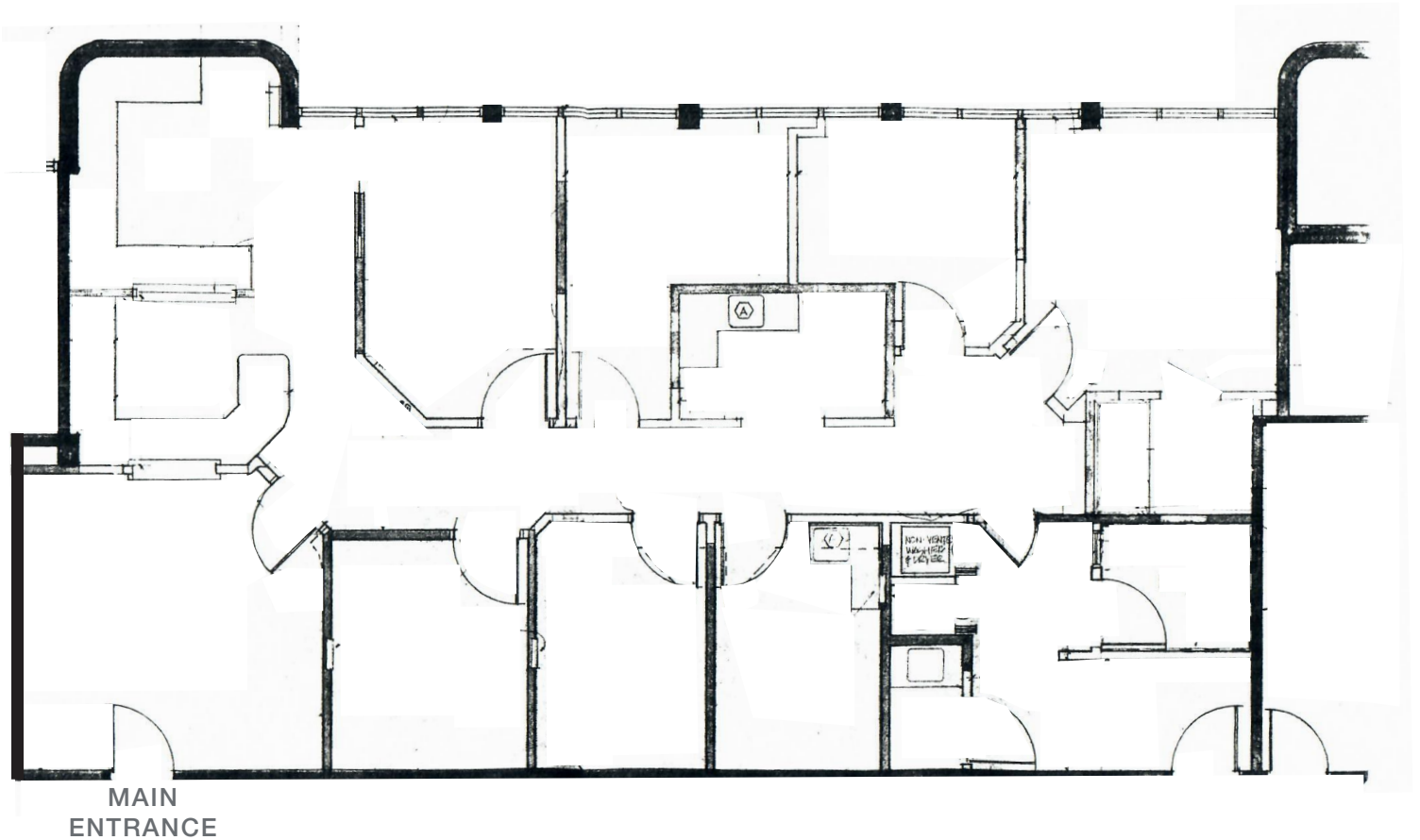
CARS PER DAY

SW 87th Avenue	19,300
N Kendall Drive	37,000
TOTAL	56,300

Floor Plan

8955 SW 87th Court, Suite 101 | Miami, FL 33176

Total Space Available to Share: 1,750 SF



For More Information

Jeremy S. Larkin

+1 786 260 0402

jlarkin@naimiami.com



📍 9655 South Dixie Highway, Suite 300, Miami, FL 33156

📞 +1 305 938 4000

🌐 naimia-ftl.com

NO WARRANTY OR REPRESENTATION, EXPRESS OR IMPLIED, IS MADE AS TO THE ACCURACY OF THE INFORMATION CONTAINED HEREIN, AND THE SAME IS SUBMITTED SUBJECT TO ERRORS, OMISSIONS, CHANGE OF PRICE, RENTAL OR OTHER CONDITIONS, PRIOR SALE, LEASE OR FINANCING, OR WITHDRAWAL WITHOUT NOTICE, AND OF ANY SPECIAL LISTING CONDITIONS IMPOSED BY OUR PRINCIPALS NO WARRANTIES OR REPRESENTATIONS ARE MADE AS TO THE CONDITION OF THE PROPERTY OR ANY HAZARDS CONTAINED THEREIN ARE ANY TO BE IMPLIED.