

INDUSTRIAL FOR LEASE | 8,400 SF

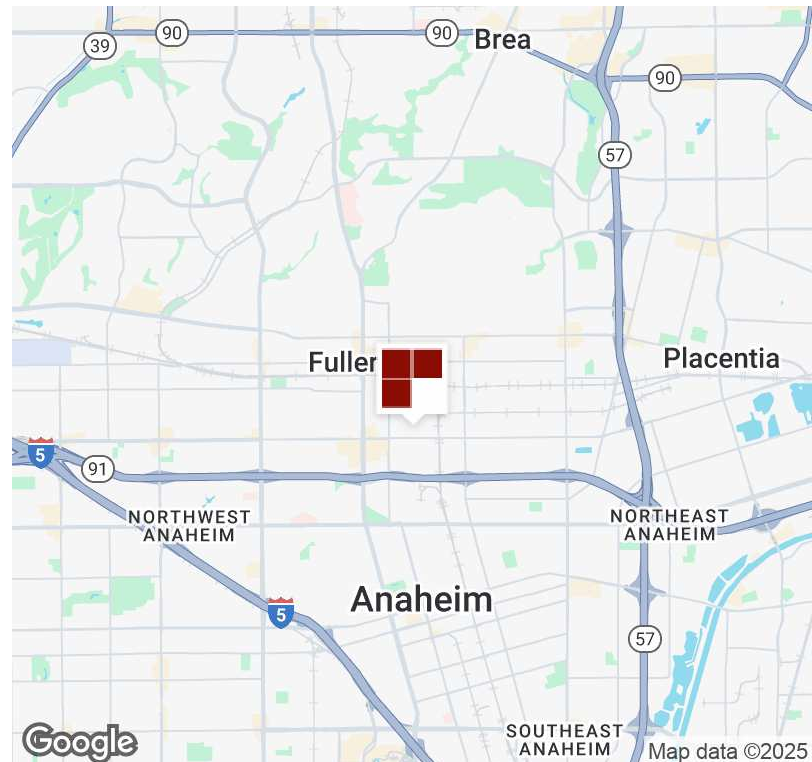
1812 AMERICAN STREET ANAHEIM, CA 92801

FLYER PAGE 1



PROPERTY HIGHLIGHTS

- Approximately 2,050 SF HVAC Office Area
- 200 Amp / 240 Volt / 3 Phase Power
- Three (3) 12'x14' Ground Level Truck Doors
- Four (4) Restrooms
- 16' Minimum Clearance
- Fire Sprinklered
- Fenced Yard (Approx. 4,000 Sq. Ft.)
- EXCELLENT ACCESS TO 91 FWY.
- Competitive Gross Lease Rates / No CAM's



MATTHEW ROSSMAN
DIRECTOR OF MARKETING
714.783.2107
matt@bryanindprop.com
CA DRE #01794680

BRYAN INDUSTRIAL PROPERTIES
146 E. ORANGETHORPE AVENUE
ANAHEIM, CA 92801
BRYANINDPROP.COM
CA DRE #00002442

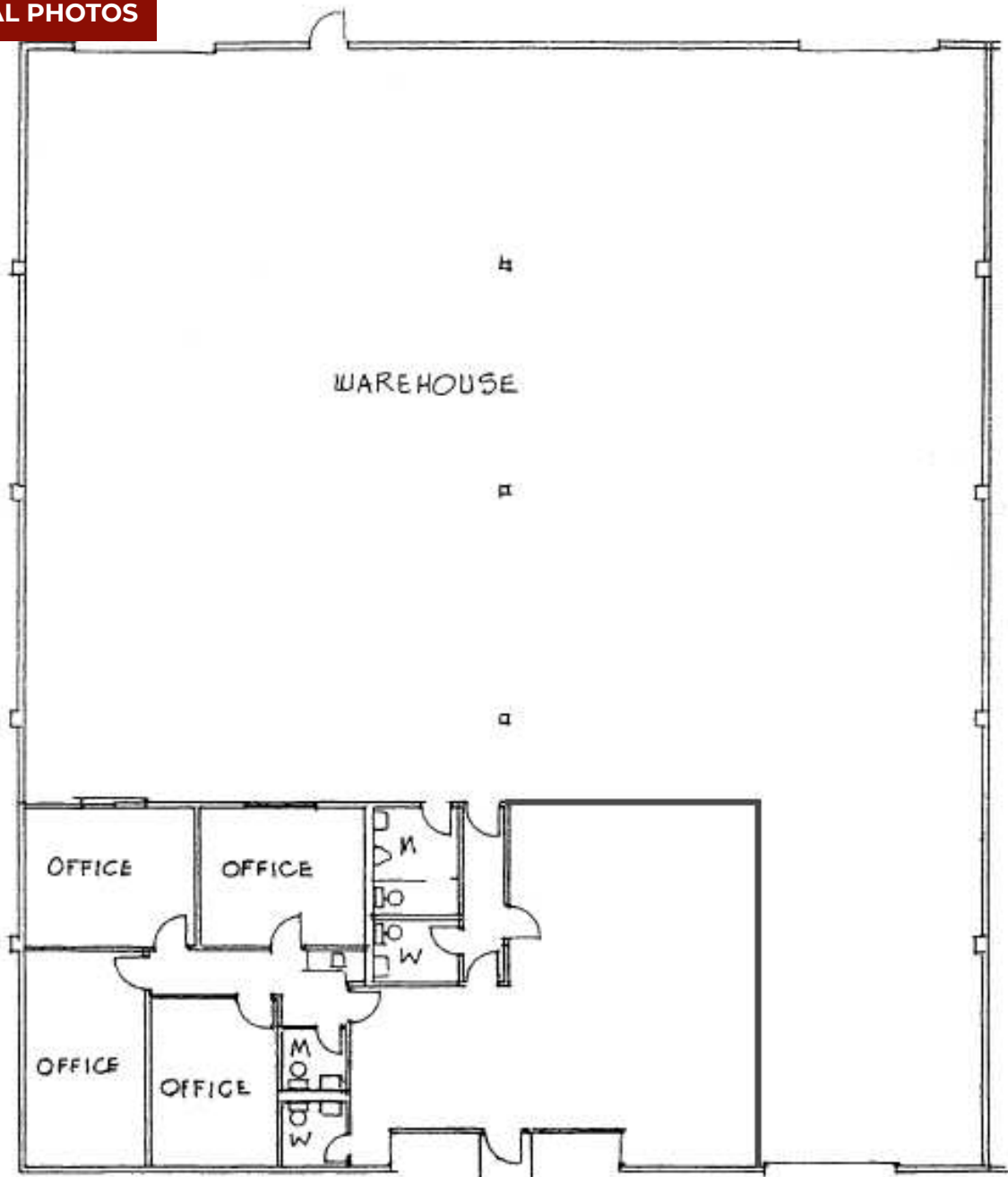


The information contained herein has been obtained from sources we deem reliable. However, no warranties or representations, expressed or implied, are made as to the accuracy of any information contained herein, and the information is subject to errors and omissions. This information is also subject to price, rental or other conditions, withdrawal without notice, and to any special listing conditions by our principals.

INDUSTRIAL FOR LEASE | 8,400 SF

1812 AMERICAN STREET ANAHEIM, CA 92801

 ADDITIONAL PHOTOS



AMERICAN STREET

MATTHEW ROSSMAN
DIRECTOR OF MARKETING
714.783.2107
matt@bryanindprop.com
CA DRE #01794680

BRYAN INDUSTRIAL PROPERTIES
146 E. ORANGETHORPE AVENUE
ANAHEIM, CA 92801
BRYANINDPROP.COM
CA DRE #00002442



The information contained herein has been obtained from sources we deem reliable. However, no warranties or representations, expressed or implied, are made as to the accuracy of any information contained herein, and the information is subject to errors and omissions. This information is also subject to price, rental or other conditions, withdrawal without notice, and to any special listing conditions by our principals.