

RETAIL FOR LEASE ▾


**225 S. Poplar St**

Charlotte, NC 28202



## ABOUT THE PROPERTY ∨

Located in the heart of Uptown Charlotte, 225 S. Poplar Street offers an unparalleled opportunity to position your restaurant in the midst of a dynamic, high-energy urban environment. Uptown serves as the city's economic, cultural, and social epicenter, attracting a daily influx of professionals, residents, and visitors.

 225 S. Poplar St, Charlotte, NC 28202

---

**Space Available** 3,985 SF Ground Level Retail W/ Mezzanine

---

**Delivery Condition** 2nd Generation Restaurant

---

**Target Use** Restaurant

---

- Site Features**
- Located below 300 luxury apartments
  - Directly across the street from Romare Bearden Park and Truist Field
  - Walking distance to Bank of America Stadium and Spectrum Center



225 S. POPLAR ST | CHARLOTTE, NC

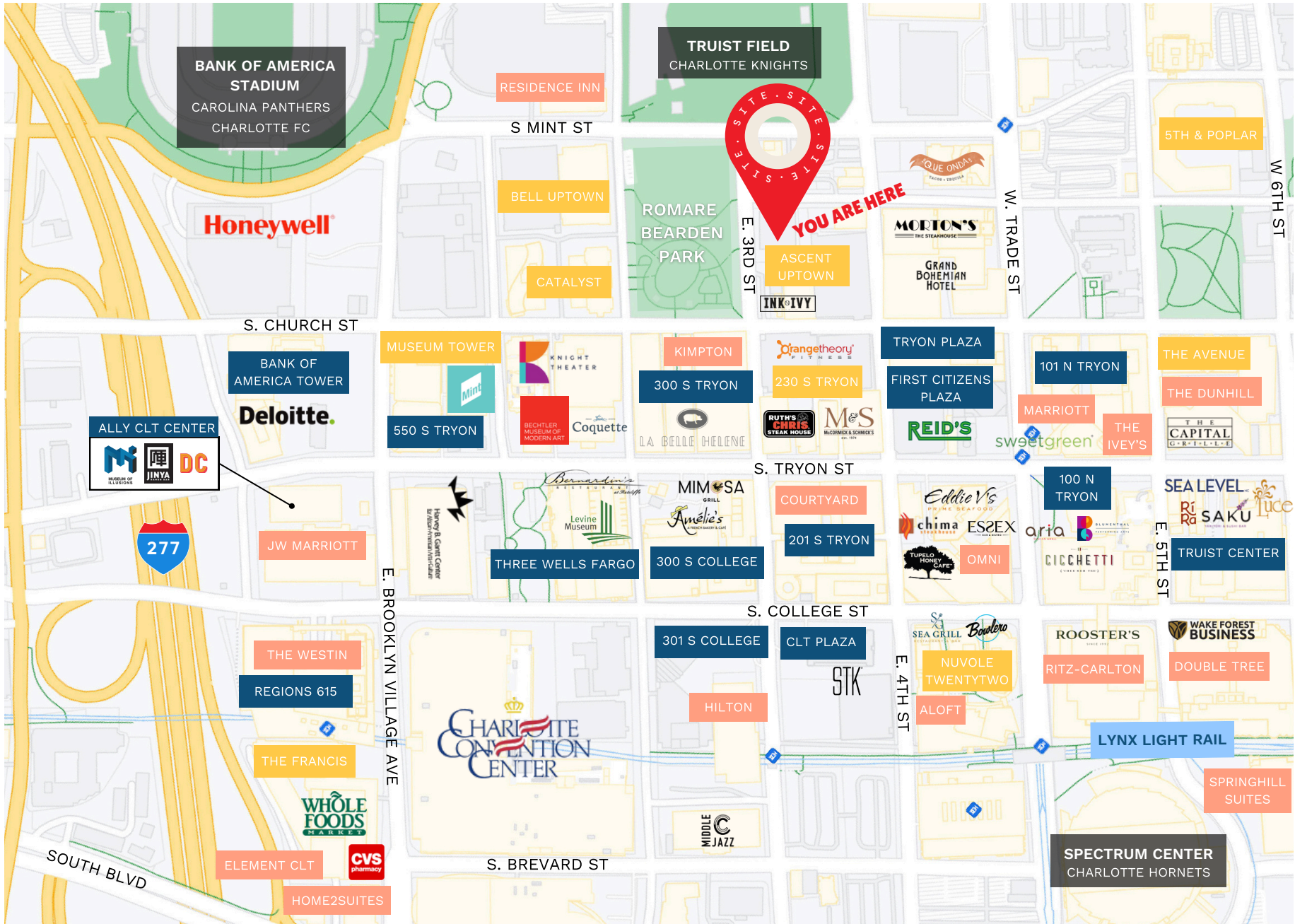


PROPERTY DETAILS

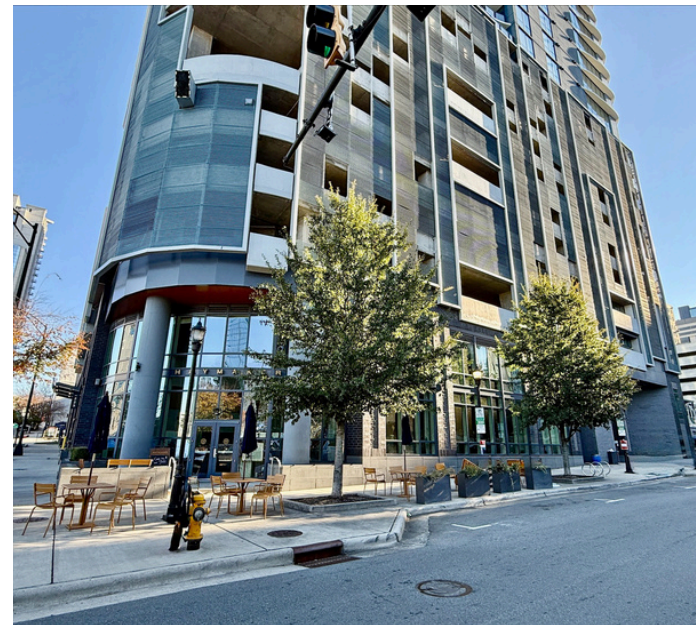
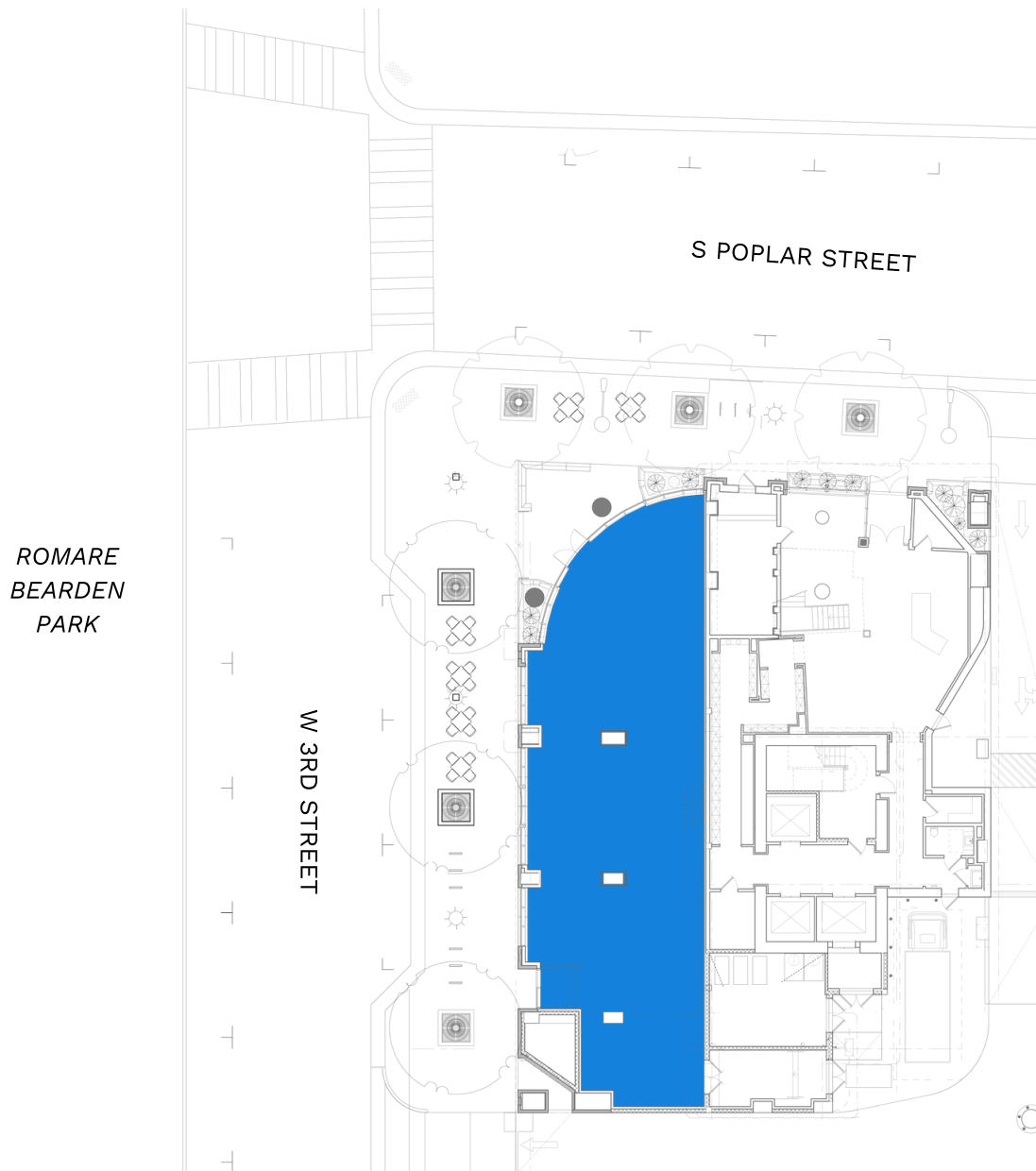
LOCATION

SITE PLAN

CONTACT



SITE PLAN ▾



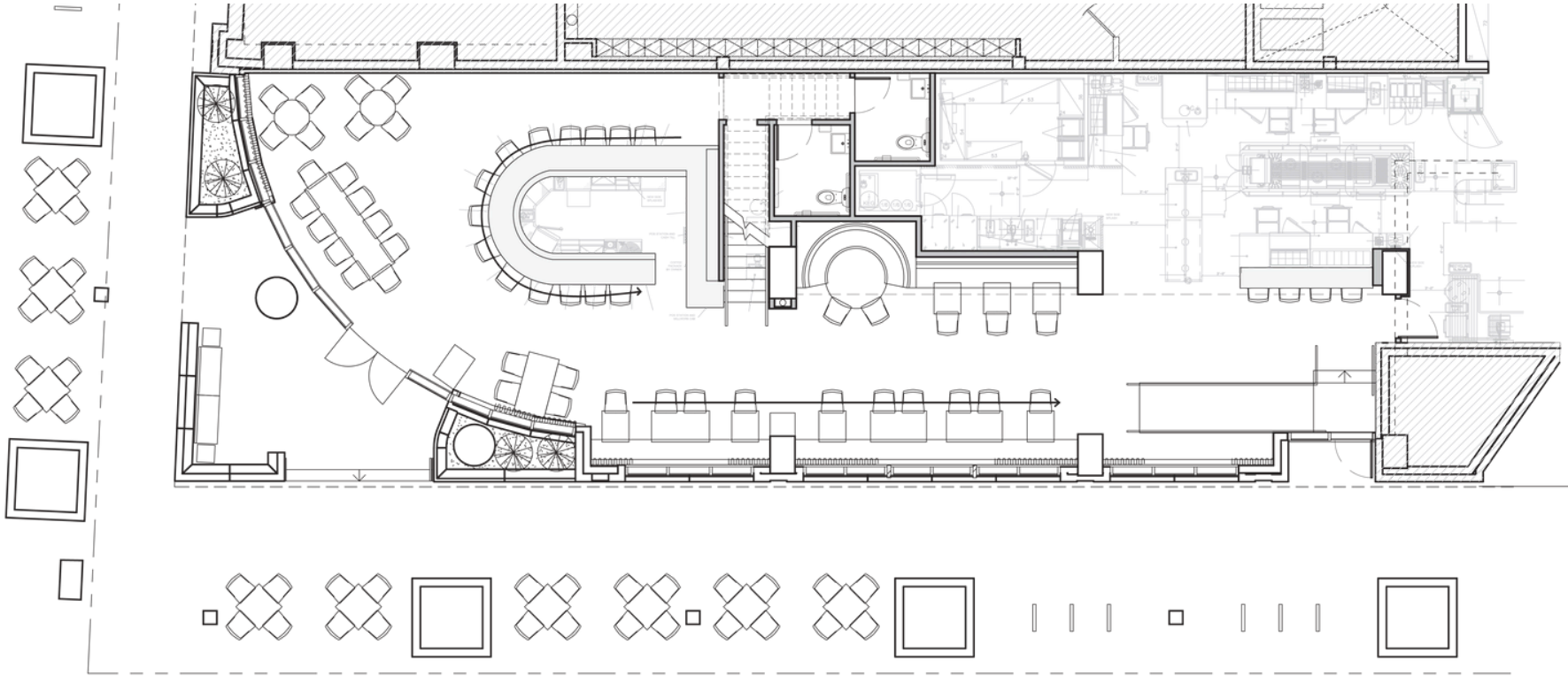
PROPERTY DETAILS

LOCATION

SITE PLAN

CONTACT

GROUND LEVEL ▾



PROPERTY DETAILS

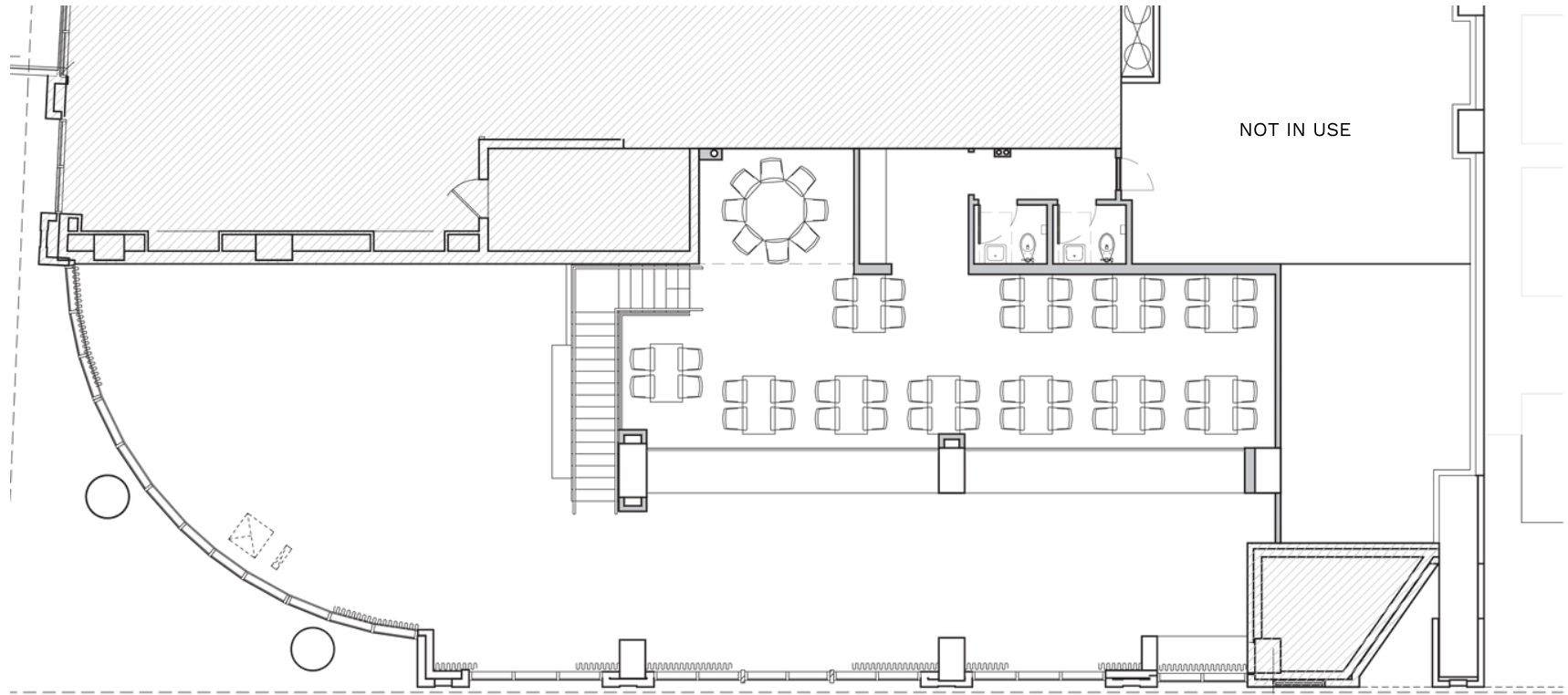
LOCATION

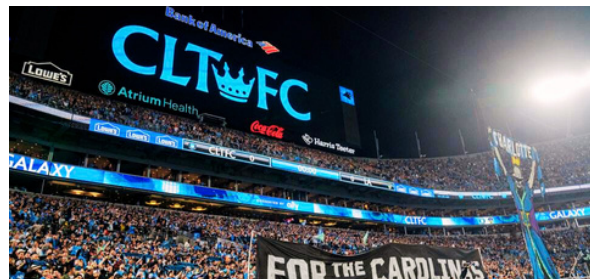
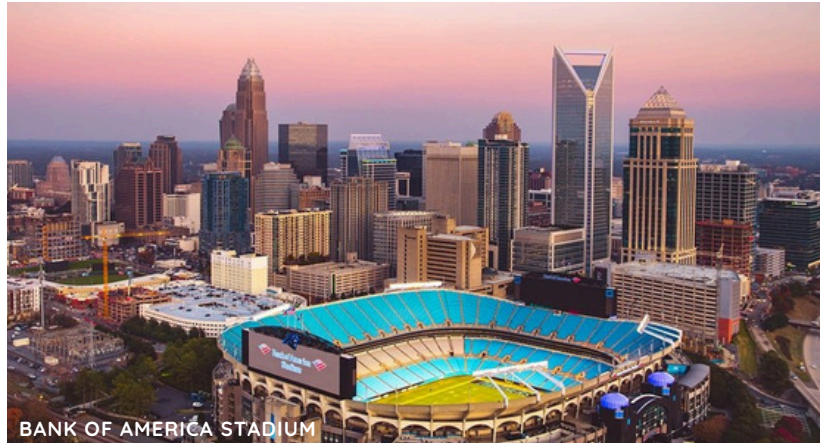
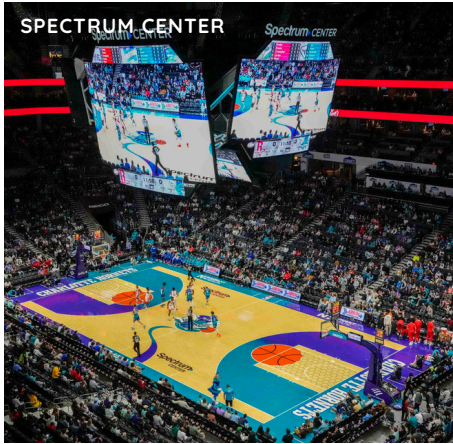
SITE PLAN

CONTACT



MEZZANINE LEVEL ▾





PROPERTY DETAILS  
LOCATION  
SITE PLAN  
CONTACT



GET IN TOUCH ▾



**Thompson Brock**  
Thompson@ThriftCRES.com  
704-661-8576