

BAYSIDE REALTY PARTNERS PRESENTS

# Hillsdale Medical & Dental Building

1291-1295 E. Hillsdale Boulevard, Foster City

*Premier Office and Medical / Dental Building*

**Generous  
Free Rent  
Available**



TRASK LEONARD  
President and CEO  
650.533.2591  
[tleonard@baysiderp.com](mailto:tleonard@baysiderp.com)  
DRE#01152101



GRACE LINDBERG  
Vice President  
415.307.0252  
[glindberg@baysiderp.com](mailto:glindberg@baysiderp.com)  
DRE#02230832

**BAYSIDE**  
REALTY PARTNERS  
MEDICAL/DENTAL PROPERTY SPECIALISTS

# Hillsdale Medical & Dental Building

1291-1295 E. Hillsdale Boulevard, Foster City

## LOCATION

- Very close proximity to Hwy 101/92 interchange
- Prominence on Hwy 92 frontage, with approximately 149,000 monthly cars

## FOSTER CITY

- Fast growing population of approximately 33,500 with median household income of \$193,600
- Highly commercially insured population
- Home to Gilead Sciences, VISA, Sony



## BUILDING

- Foster City's largest medical/dental building
- Located in heart of medical "district" on E. Hillsdale Blvd
- Excellent on-site parking at approximately 4 per 1,000 sf
- Wide mix of tenants, including IDEA Interdisciplinary Dental Education, Foster City Pediatric Medicine
- Office and medical/dental office spaces
- Newly appointed and upgraded common conference room

# Hillsdale Medical & Dental Building

1291-1295 E. Hillsdale Boulevard, Foster City



Newly appointed and upgraded common conference room

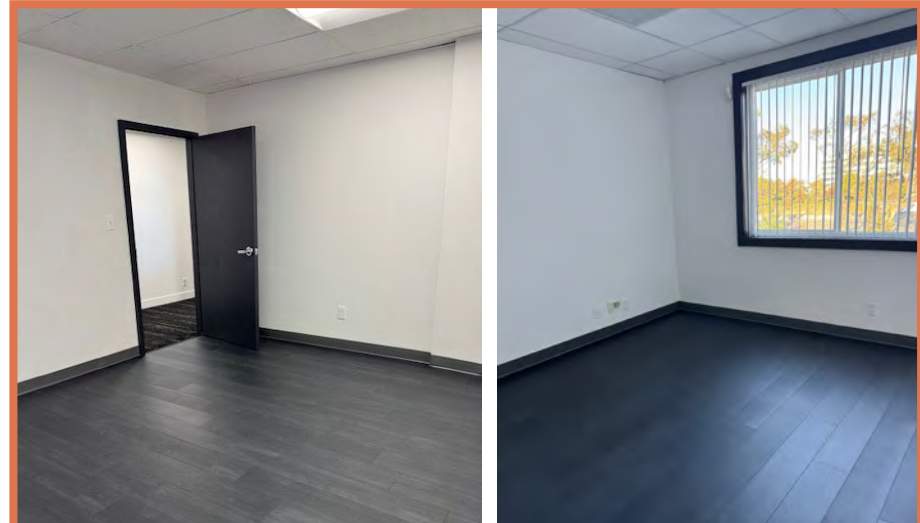


# Hillsdale Medical & Dental Building

1291-1295 E. Hillsdale Boulevard, Foster City



SUITE 211

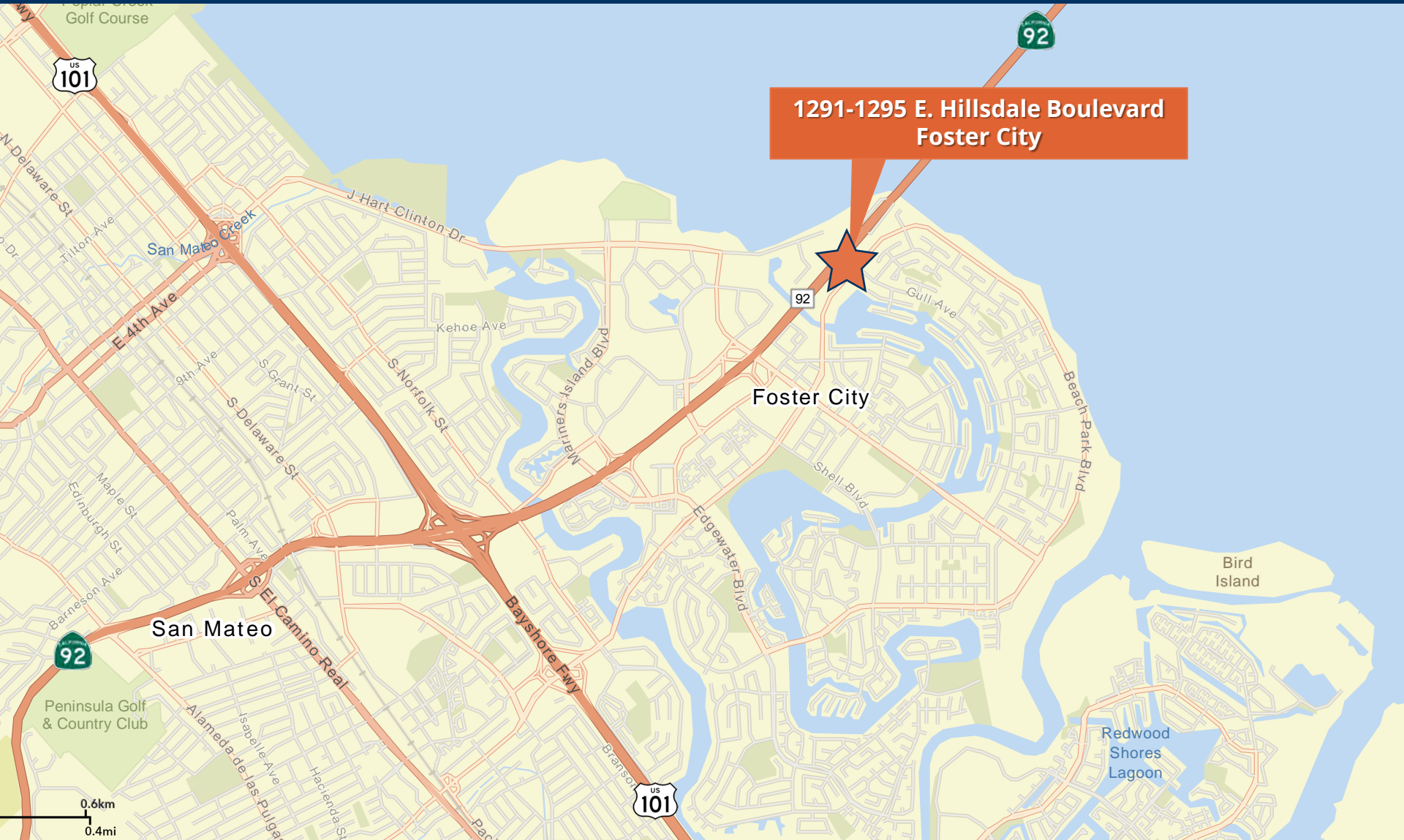


SUITE 225C



# Hillsdale Medical & Dental Building

1291-1295 E. Hillsdale Boulevard, Foster City



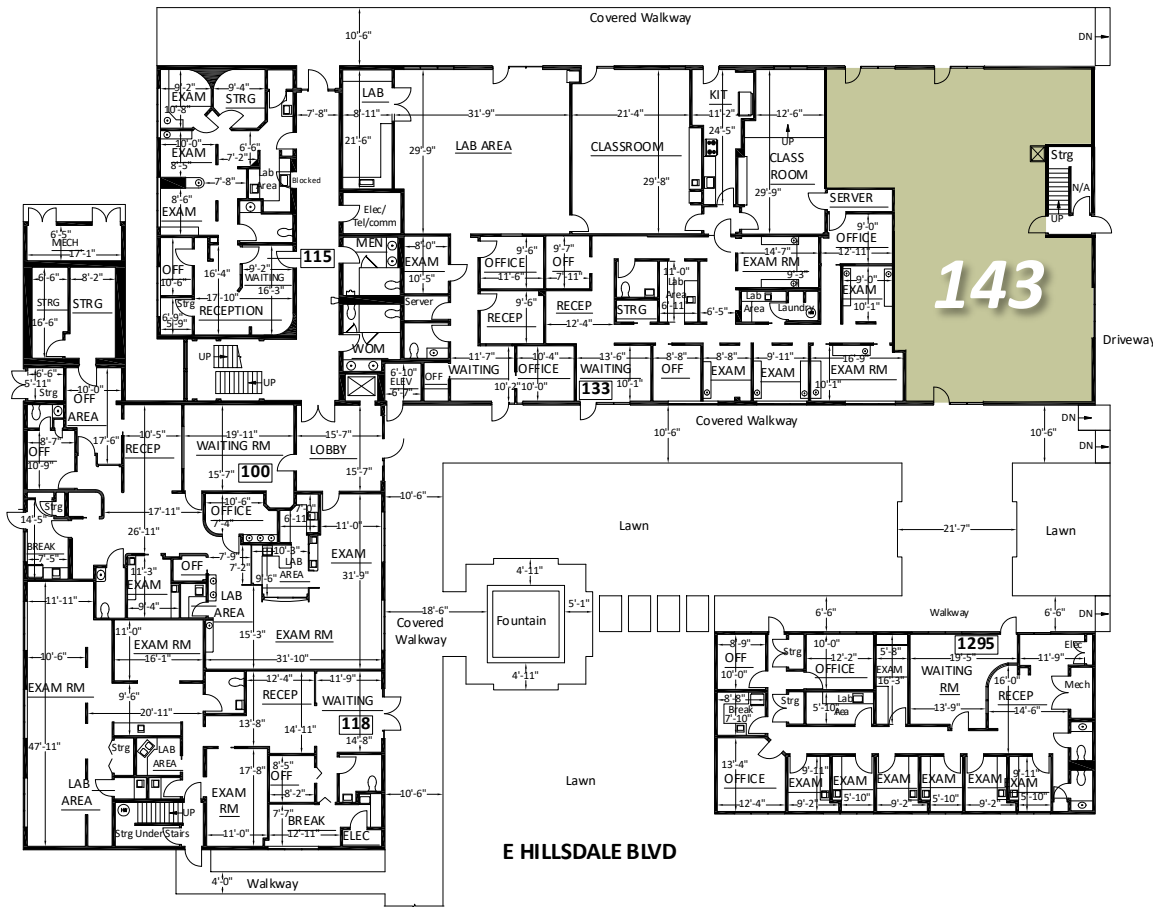
# Hillsdale Medical & Dental Building

1291-1295 E. Hillsdale Boulevard, Foster City



# Hillsdale Medical & Dental Building

1291-1295 E. Hillsdale Boulevard, Foster City



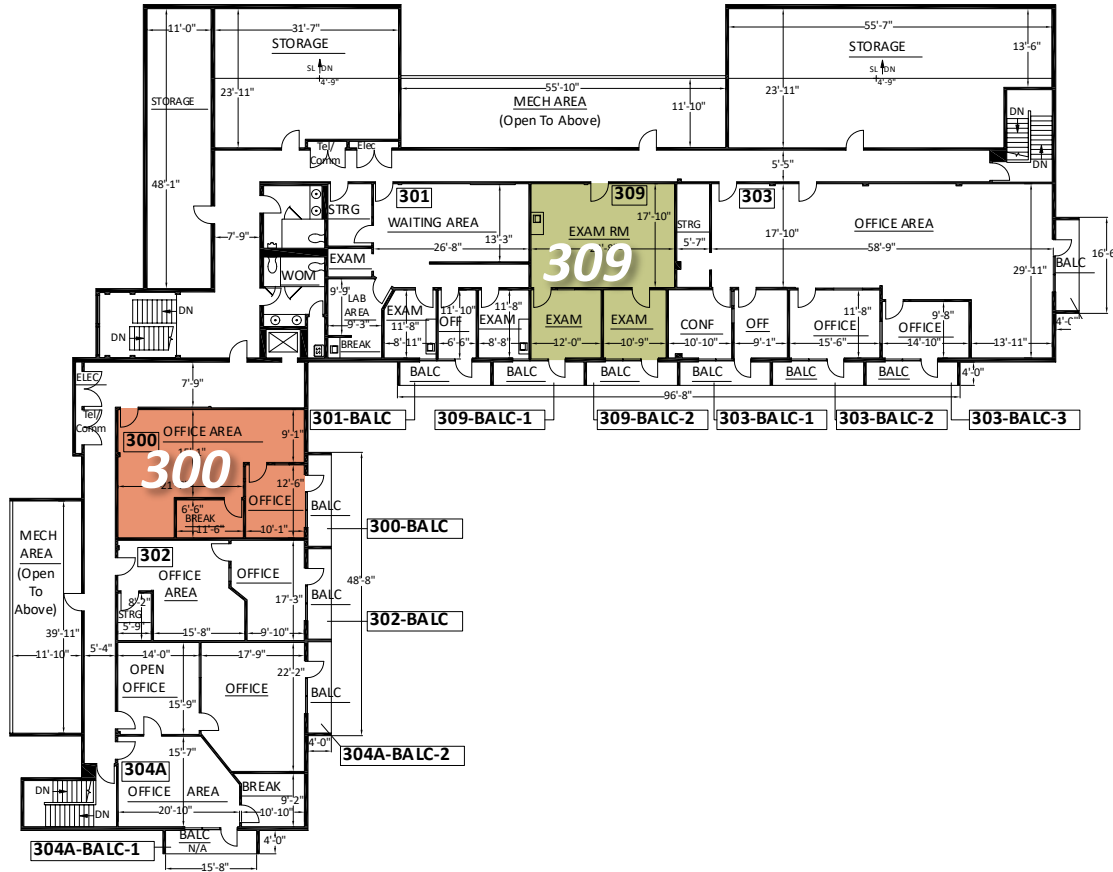
## FIRST FLOOR

Suite 143 2,719 RSF  
Shell condition



# Hillsdale Medical & Dental Building

1291-1295 E. Hillsdale Boulevard, Foster City



## THIRD FLOOR

**Suite 309**      **885 RSF**  
 2 exam rooms, 1 large room. Access to balcony

**SUBLEASE**  
**Suite 300**      **858 RSF**  
 Open-concept office space, breakroom, private office. Access to balcony

SUBLEASE through October 31, 2027  
 Available date: 30 days notice

# Meet Your Expert Team



TRASK LEONARD

President and CEO

650.533.2591

[tleonard@baysiderp.com](mailto:tleonard@baysiderp.com)

DRE#01152101



GRACE LINDBERG

Vice President

415.307.0252

[glindberg@baysiderp.com](mailto:glindberg@baysiderp.com)

DRE#02230832

# BAYSIDE REALTY PARTNERS

*The preeminent provider of management, leasing, construction management and accounting services for healthcare properties.*



## MARKET LEADER

- Leasing & Property Management
- Investment Sales
- Tenant Representation
- Construction Management
- Property Repositioning



## INFLUENTIAL NETWORK

- Institutional Investors
- Healthcare Systems and Healthcare Districts
- Physicians & Districts
- Private Investors



## DOMINANT FOOTPRINT

- 2 million SF leased & managed
  - 50+ MOB portfolio
  - 10,000-240,000 SF
  - 500,000 SF portfolio
- San Francisco's largest MOBs
- 950+ leases executed
- 500+ medical and dental tenants

**DOMINANT. EXPERT. INFLUENTIAL.**