



229 King Street Charleston, SC 29401

Will Sherrod, CCIM

843.364.3796

wsherrod@naicharleston.com

Whit Jones

757.585.0071

wjones@naicharleston.com

HISTORIC BUILDING WITH IDEAL LOCATION

NAI Charleston is pleased to present an incredible opportunity to join the high-profile retail shopping destination in Charleston, SC. Situated on "Lower King," the property is immediately across from the Charleston Place hotel, which boasts high-end retail stores such as Gucci, Louis Vuitton, Kate Spade, Tommy Bahama, and others.



Market Street

The RIVIERA

pure barre



Le Farfalle



spartina

RANGONI FIRENZE

7 HILLS LIVING



King Street

LOVESHACKFANCY

NAI Charleston



kate spade NEW YORK



downtown CHARLESTON

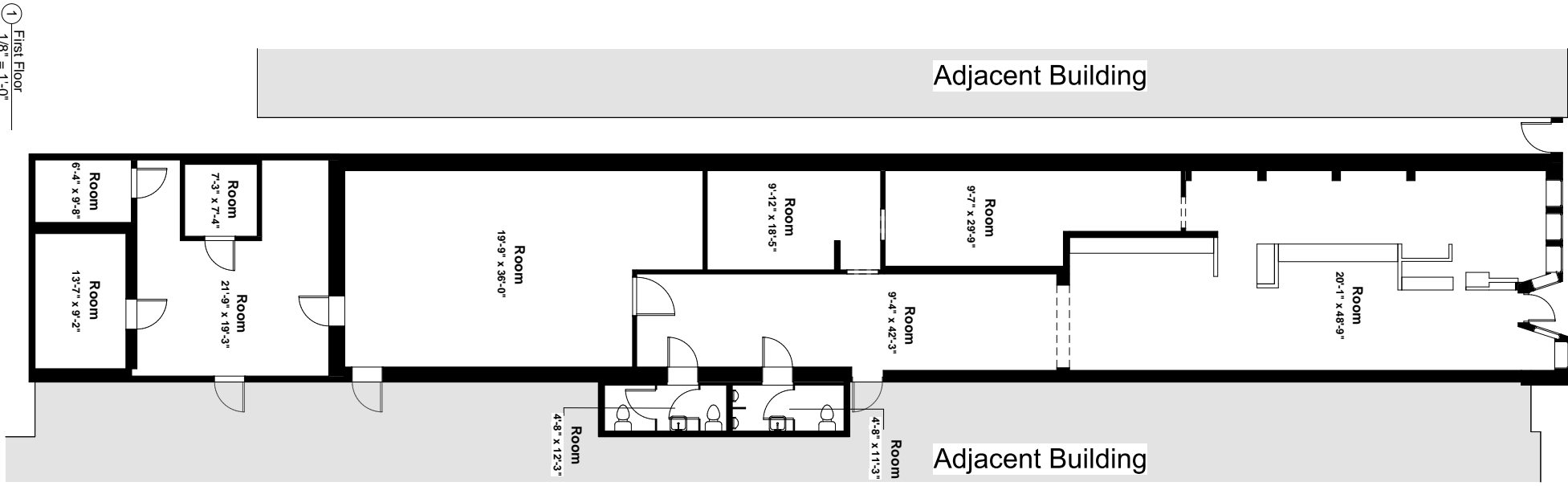
- ±3,740 SF of open retail space for lease in historic Charleston
- Unparalleled exposure to King Street with built-in clientele
- Surrounded by national retailers, hotels, renowned restaurants, and entertainment venues
- Space contains polished concrete floors & exposed brick
- Up to seven parking spaces available in rear of building
- Zoned: GB- General Business, City of Charleston
- TMS #: 457-08-01-063
- **LEASE RATE: \$75/SF, NNN**



Interior Photos



Floor Plan



GROSS INTERNAL AREA FLOOR 1: 3661 sq ft
SIZES AND DIMENSIONS ARE APPROXIMATE, ACTUAL MAY VARY

Location

WALKER'S PARADISE

The Property has a 99% walk-ability rate and considered to be a "Walker's Paradise," according to Walk Score.

11.3 Million Visitors

The total number of foot traffic on King Street in the last 12 months (9/15/22 -9/15/23).

5,200+ Units

There are more than 5,200 residential units planned or underway on the peninsula

#1

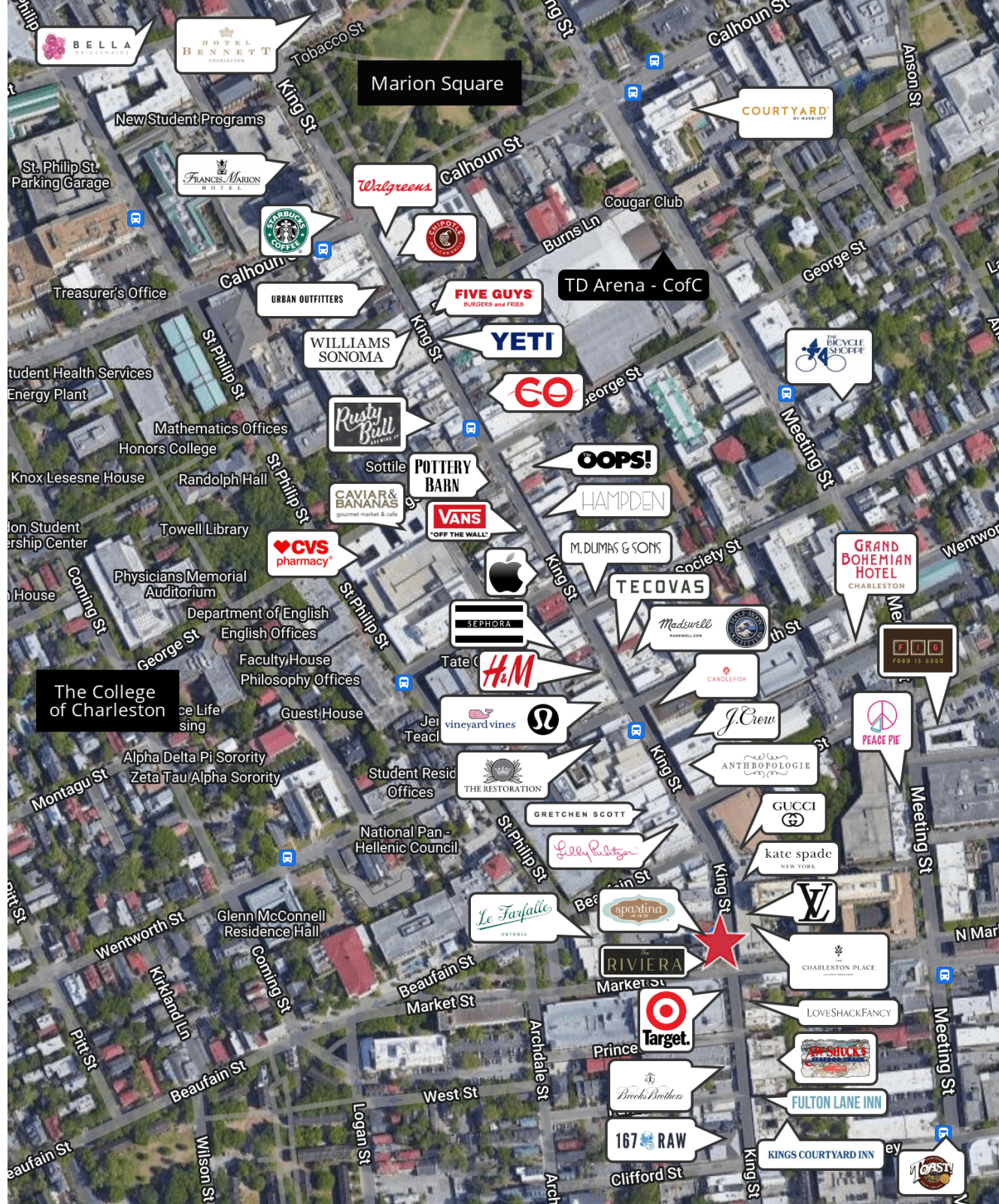
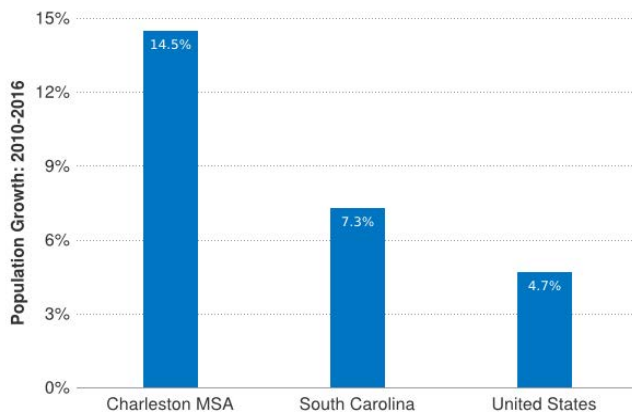
Best City in the U.S.
-Travel + Leisure
& Condé Nast

#1

City to Retire To
-WalletHub

#2

"Trending Destination"
in the U.S.
-TripAdvisor



Nearby Attractions

Not only is Charleston's Historic District home to dining, shopping and working, it boasts natural attractions including the future Lowcountry Lowline, the pedestrian entrance to the Ravenel Bridge and Marion Square. 229 King Street is a short distance from all of these attractions, which offer a breath of fresh air from the commercial King Street corridor.



LOWCOUNTRY LOWLINE

Coming to Downtown Charleston Soon

1.5 miles of disused railroad will be converted into the long-awaited Lowcountry Lowline linear park, running from Courtland Avenue to Woolfe Street. Inspired by the High Line in New York City, the Lowline will give residents and visitors the opportunity to enjoy the revitalized Upper Peninsula.

ARTHUR RAVENEL JR. BRIDGE

Charleston's Iconic View



Within a mile from 229 King Street, there is access to the 2.7-mile pedestrian walkway/bikeway along the Ravenel Bridge.

MARION SQUARE

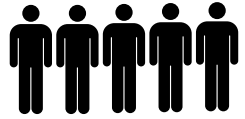
Downtown Charleston's Main Park & Outdoor Venue



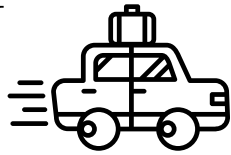
Located in the heart of downtown Charleston, Marion Square presents year-round activities and attractions including the Farmers Market, Southeastern Wildlife Expo, Charleston Wine + Food, Hotel Bennet & more.

Charleston Fast Facts

POPULATION



830,000



33 PPL

ON AVERAGE, THE AREA SEES 33 NEWCOMERS PER DAY

WORKFORCE

±20,000+

23.4%

JOBS FORECASTED TO BE ADDED IN NEXT 3 YEARS

INCREASE IN EMPLOYMENT OVER THE LAST DECADE



KEY ECONOMIC DRIVERS

TOURISM

7.7 MILLION

VISITORS ANNUALLY



\$12.8 BILLION

AVERAGE ANNUAL ECONOMIC IMPACT

Source: Charleston Regional Development Alliance

AVIATION

10.8 BILLION



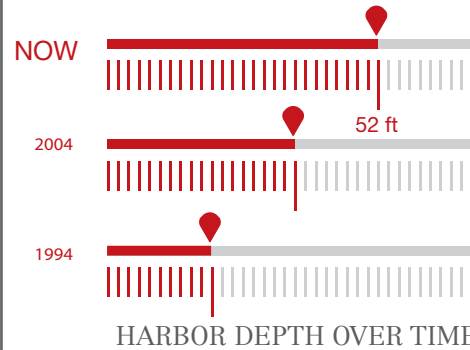
\$ PUMPED INTO CHS

MILITARY

20,000

ACTIVE DUTY & CONTRACT CIVILIAN

PORT OF CHARLESTON



±64 BILLION

ANNUAL STATEWIDE IMPACT

±225,600

JOBS CREATED

AUTOMOTIVE

2ND

HIGHEST EMPLOYMENT CONCENTRATION FOR TRANSPORTATION EQUIPMENT MANUFACTURING

65,000+

TECHNICALLY-SKILLED AUTOMOTIVE WORKERS



65+ AUTOMOTIVE MANUFACTURERS & SUPPLIERS

Contact Us

Will Sherrod, CCIM

Broker

843.364.3796

wsherrod@naicharleston.com

Whit Jones

Associate

757.585.0071

wjones@naicharleston.com

DISCLAIMER: The information contained herein has been given to us by the owner of the property or other sources we deem reliable. We have no reason to doubt its accuracy, but we do not guarantee it. All information should be verified prior to purchase or lease.

NAI Charleston

