

136  
FIFTH AVENUE



sleep number

Sleep Hot?

SLEEP  
WILL GET THE WORK

Meet the  
Climacool  
slumber bed

Sleep Cold?

sleep number

HERSCHEL SUPPLY COMPANY

Life's A Trip

ksr

# 136

## FIFTH AVENUE

BETWEEN 18th & 19th STREETS

SIZE: 3,600 SF Ground Floor  
600 SF Mezzanine  
+ Full Basement

FRONTAGE: 25'

CEILING HEIGHT: 16'

POSSESSION: Immediate

TRANSPORTATION: **4 5 6 L N Q R W**

### HIGHLIGHTS:

- Currently Sleep Number location
- High foot & vehicle traffic area
- Great branding potential
- Steps away from both Gramercy Park and Union Square Park
- Walking distance to 14 st-Union Square station
- Neighboring tenants include: Psycho Bunny, Yves Delorme, Herschel, Rothy's (coming soon), Aritzia, H&M, CVS, Sephora, Outdoor Voices, Mejuri, Falconeri, Athleta, Banana Republic, Parachute, Untuckit

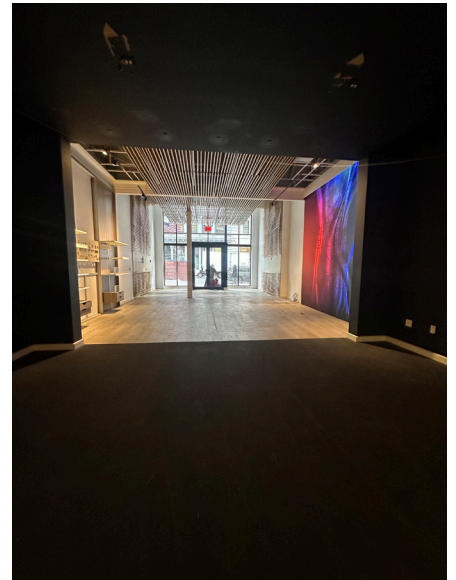
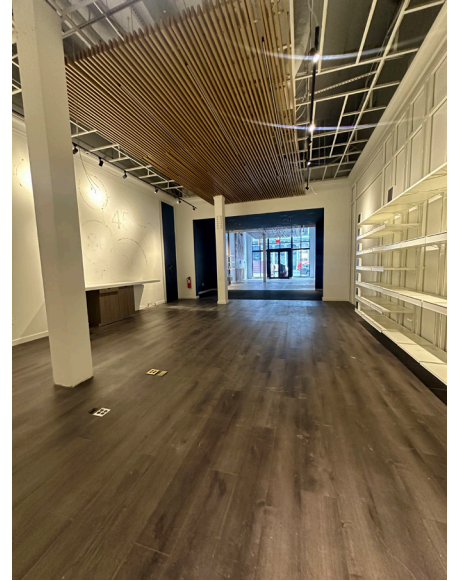


All information supplied in this marketing presentation and/or flyer is from sources deemed reliable and is furnished subject to errors, omissions, modifications, removal of listings from sale/lease and to any listing condition. Any square footage, dimensions, floor plans and/or technical data set forth are approximations and are subject to further elaboration/confirmation.



# 136

FIFTH AVENUE



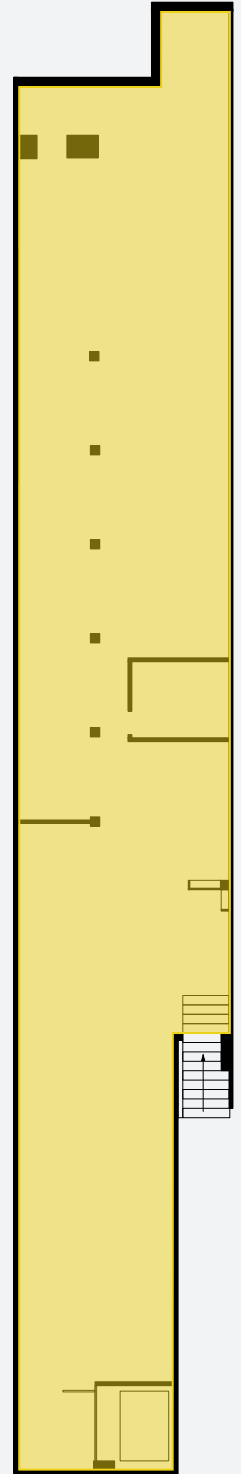
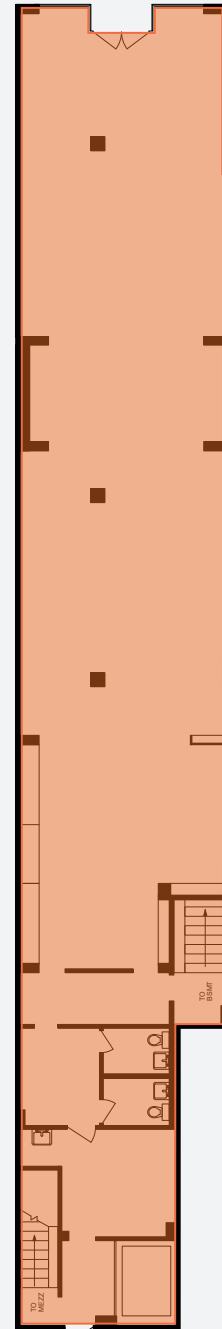
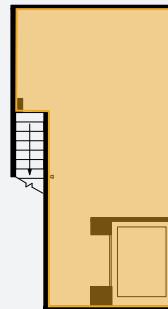
# 136

FIFTH AVENUE

BETWEEN 18th & 19th STREETS



- GROUND FLOOR  
3,600 SF
- MEZZANINE  
600 SF
- BASEMENT



# 136 FIFTH AVENUE



136 Fifth Avenue is a premier boutique office building located Midtown Manhattan with a tremendous wraparound frontage, ground-level flagship retail space. Along prestigious Fifth Avenue, there's over 200,000 visitors per day destination shoppers, visiting tourists, and Midtown employees which form a solid customer base along the retail corridor.

Close proximity to Times Square, Bryant Park, and other fabulous New York City landmarks. Also surrounded by the city's finest dining and cultural venues along with a thriving retail landscape featuring the world's biggest consumer brands.

The property offers convenient access to mass transit options - Grand Central Terminal, Penn Station, and Port Authority Bus Terminal.



**+200K**

PEOPLE WALK PAST DAILY

**+6M**

ANNUAL VISITORS  
TO BRYANT PARK

**\$8B+**

OF ANNUAL SALES  
ON FIFTH AVE

**470K+**

AVERAGE WEEKDAY VISITORS  
TO ROCKEFELLER CENTER

**243M**

SQUARE FEET OF OFFICE SPACE  
IN THE AREA

**\$114K+**

PER CAPITA INCOME



# 136

FIFTH AVENUE

BETWEEN 18th & 19th STREETS

FOR MORE INFORMATION,  
PLEASE CONTACT:

**CAROLINA AZIZ**

516.640.6961 | [CAziz@ksrny.com](mailto:CAziz@ksrny.com)

**IKE BIBI**

347.417.2860 | [IBibi@ksrny.com](mailto:IBibi@ksrny.com)

